



Repairing Samsung NP300E5A LCD Screen

This guide provides a simple walkthrough for repairing a busted or cracked LCD screen on a Samsung laptop in the NP300E5A series.

Written By: Brad

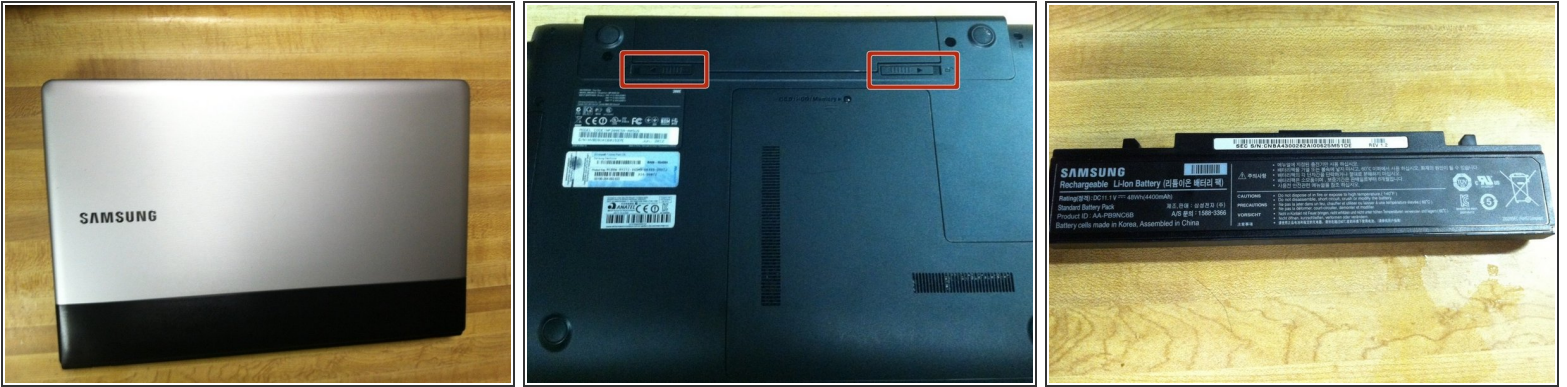




TOOLS:

- [Phillips #00 Screwdriver](#) (1)
 - [Razor Blade](#) (1)
or small flathead screwdriver
 - [Tweezers](#) (1)
 - [Spudger](#) (1)
-

Step 1 — LCD Screen



- Before you begin, be sure to remove the battery.
- Slide both battery locking mechanisms in the direction of the arrows.
- Gently pull the battery out of the laptop.

Step 2



- The black plastic bezel is secured to the housing by 2 screws on the bottom left and right of the screen.
- With a pair of tweezers or a razor blade, carefully peel off the tape covering the two screws.
- Remove the screws.

⚠ The two pads on the top left and right of the screen are not concealing screws!

Step 3



- Insert a black plastic spudger or safe-open pry tool between the bezel and the rear housing of the screen.
- Work your way around the sides and top of the screen, carefully separating the bezel from the housing.

⚠ If you pry recklessly, you will break off the tabs that hold the bezel to the frame.

- Finally, pry the bottom portion of the bezel free of the back housing.

Step 4



- Remove all 4 screws that secure the LCD to the back housing.
- The innermost screw (shown in magenta) in each of the bottom left and right corners does not need to be removed.

Step 5



- Grab the top corners of the LCD and gently fold the LCD down until it is resting on the keyboard.

⚠ Do not tear the LCD cable, located along the back of the bottom of the LCD.

Step 6



- The LCD connector is taped into its socket.
- Use tweezers to carefully lift the clear tape holding the connector down.
- Once you peel the tape past the gold portion of the connector, the connector should pull out easily.
- If you purchased a replacement LCD with the metal brackets pre-attached, then you are finished. If not, continue reading!

Step 7



- i** There are two metal mounting brackets on each end of the LCD that attach the LCD to the computer housing. If your replacement screen did not come with these mounting brackets, then you will need to transfer your old ones to the new LCD.
- There are 3 screws holding each bracket to the LCD. Remove these screws and swap the original mounting brackets to your new part.

Step 8



- Finally, be sure that you order a new LCD that has the same backlight, resolution, and model number as the original.

To reassemble your device, follow these instructions in reverse order.