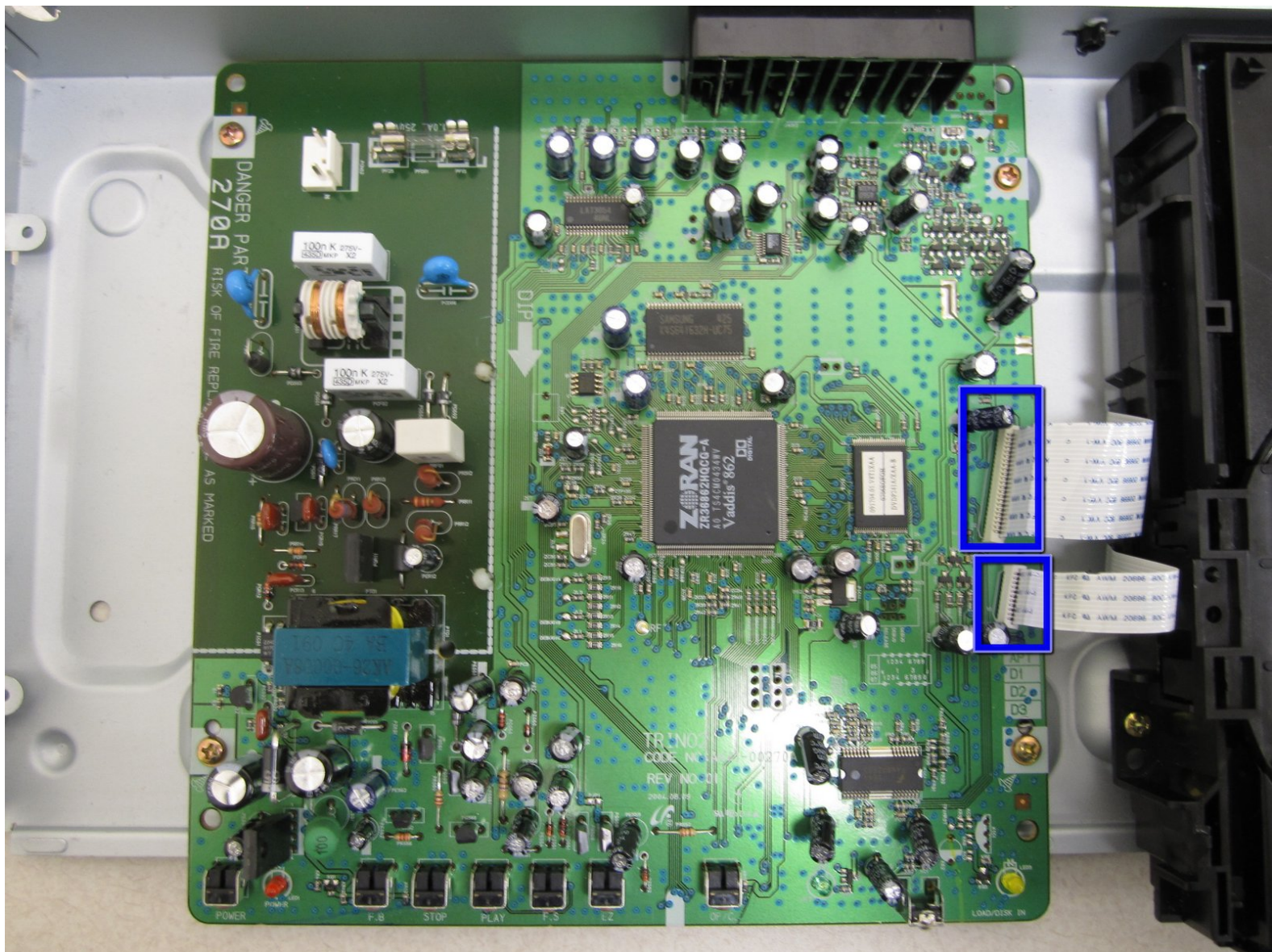




# Repairing Samsung P241 Laser

This guide will show how to access and clean the laser of DVD player.

Written By: Alexander Roberts



## INTRODUCTION

Make sure you look at the [Samsung P241 Troubleshooting Guide](#) first to see if you can solve your problem without taking the DVD player apart.

If the DVD player is skipping or not playing DVDs correctly, then there is likely a problem with the laser that reads the disc. First, you will want to try to clean the disc to make sure it is a problem with laser and not the disc. However if the problem does come from the laser, this guide will show you how to safely access it and clean it.



### TOOLS:

- [Phillips #1 Screwdriver](#) (1)
- [Flathead 3/32" or 2.5 mm Screwdriver](#) (1)




### PARTS:

- [Samsung P241 DVD drive](#) (1)



## Step 1 — Top Case



 You will need to be near a power source for this guide.

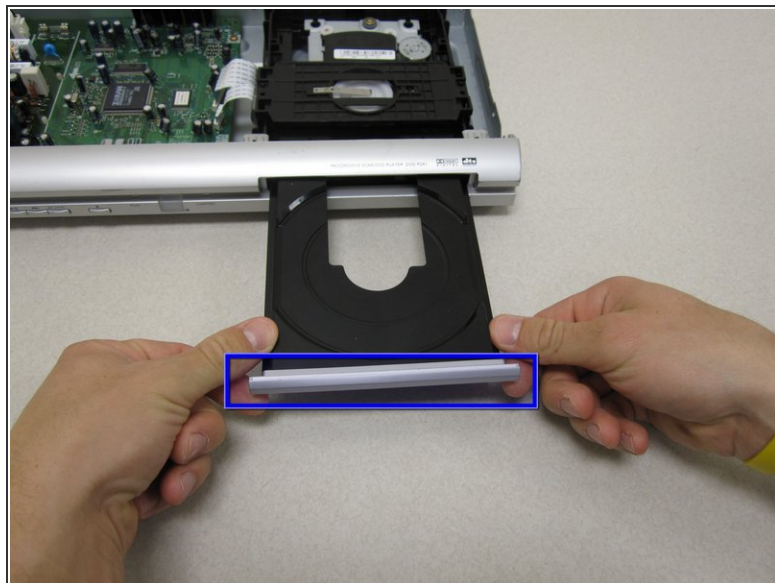
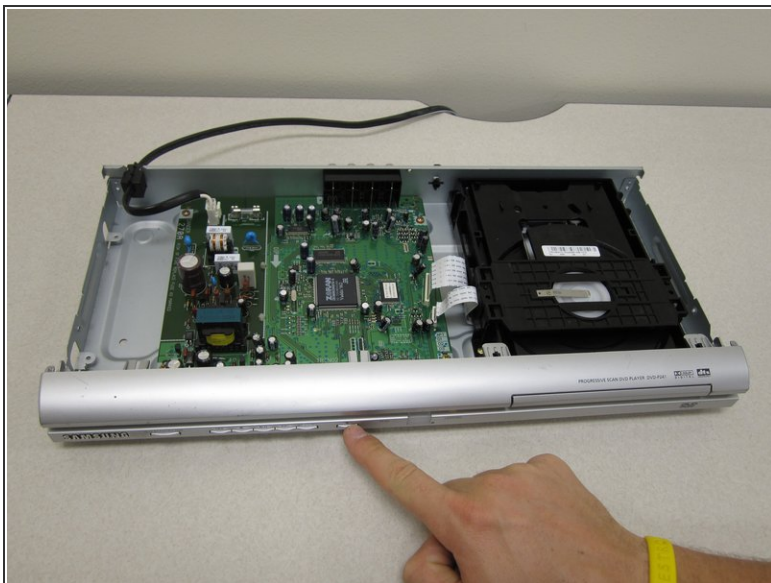
- With the back of the DVD player facing you, remove the three 1 cm black screws on the right, left, and top sides using a Phillips #1 screwdriver.

## Step 2



- Pull the top cover towards you until you can lift it up and off.

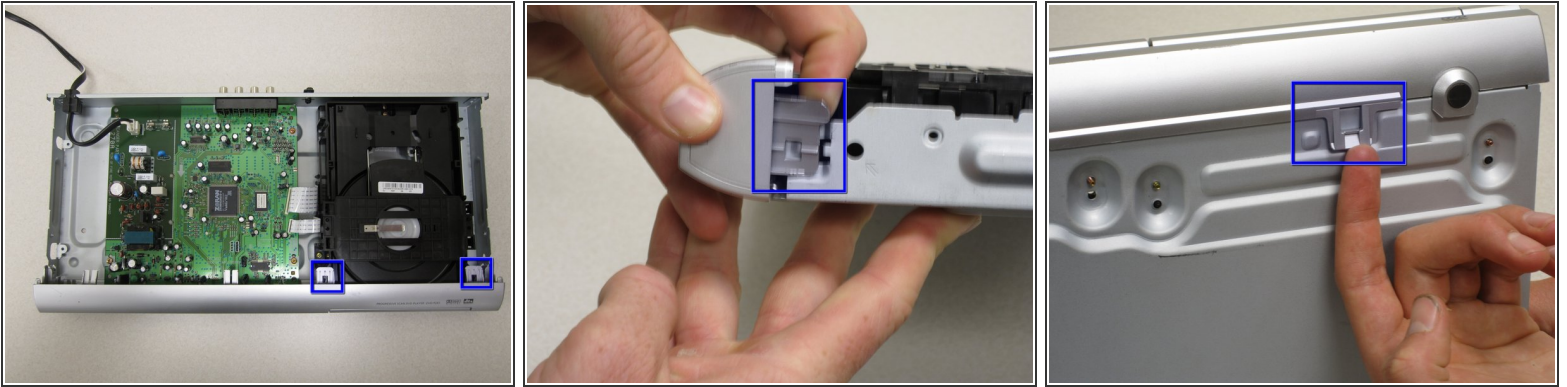
## Step 3 — Front Panel



- With the front of the DVD player facing you, turn the power on and eject the disc tray.
- Press down on the disc tray with your thumbs while also pressing up with your pointer finger on the left and right edges of the silver cover. The cover should easily pop up and off the disc tray.

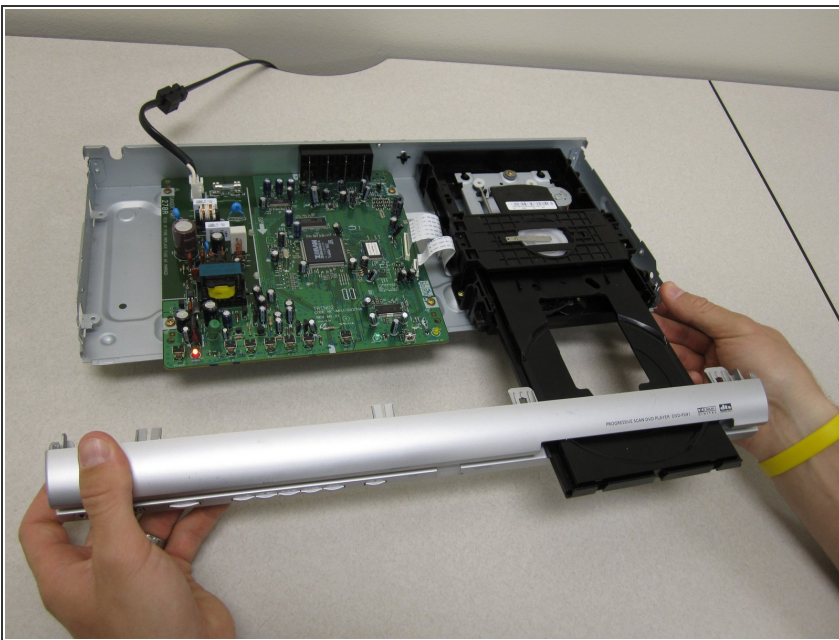
⚠ Be careful not to crack or bend the disc tray by pulling too hard.

## Step 4



- To remove the front panel, lift up the clips on the bottom, left and right sides of the DVD player.
- ⓘ Be sure to have all clips lifted up at the same time otherwise it will be difficult to get the panel off.
- ⓘ If you are having trouble removing the panel, try wedging an object underneath the two clips on the bottom to keep them from falling back into place.

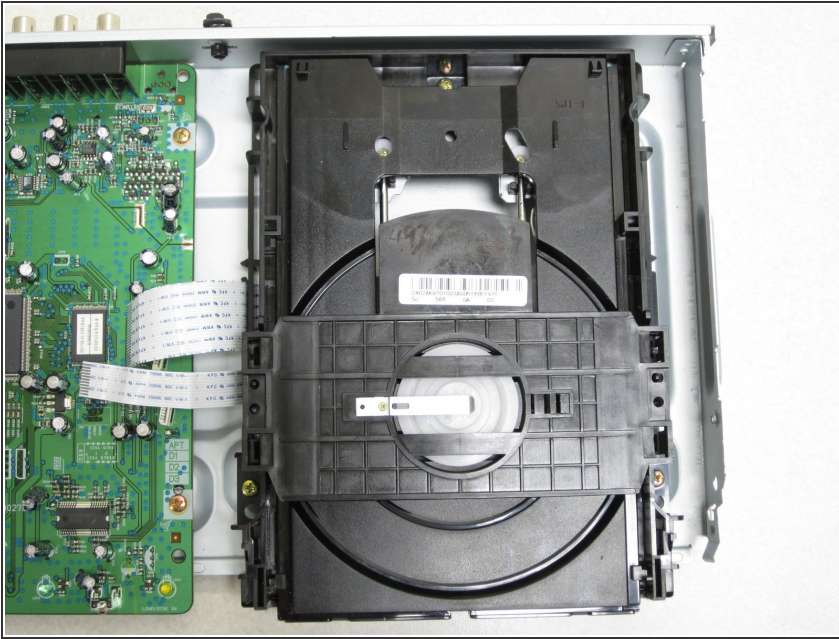
## Step 5



- Gently remove the front panel by pulling it forward.



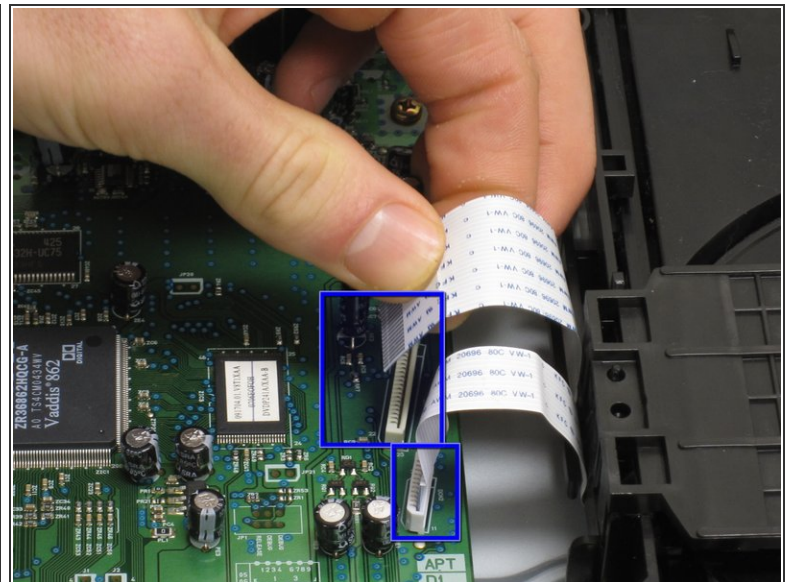
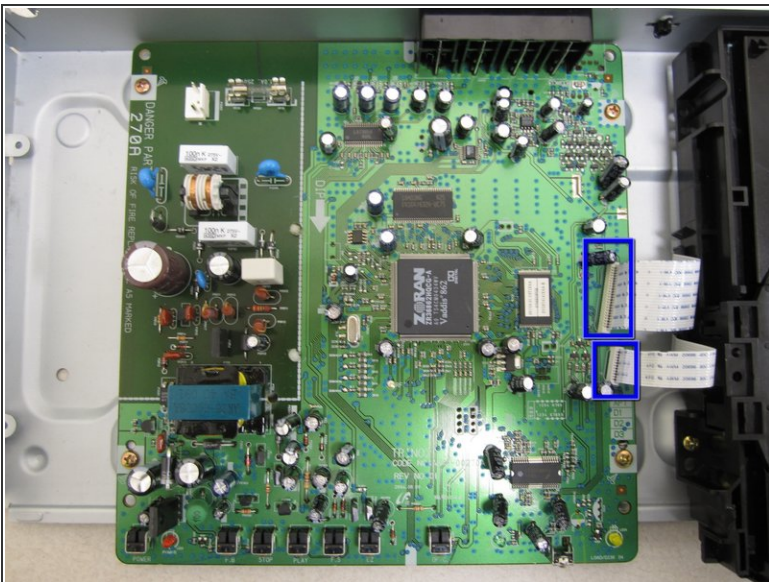
## Step 6



- Press the eject button again to make the disc tray slide back into place.

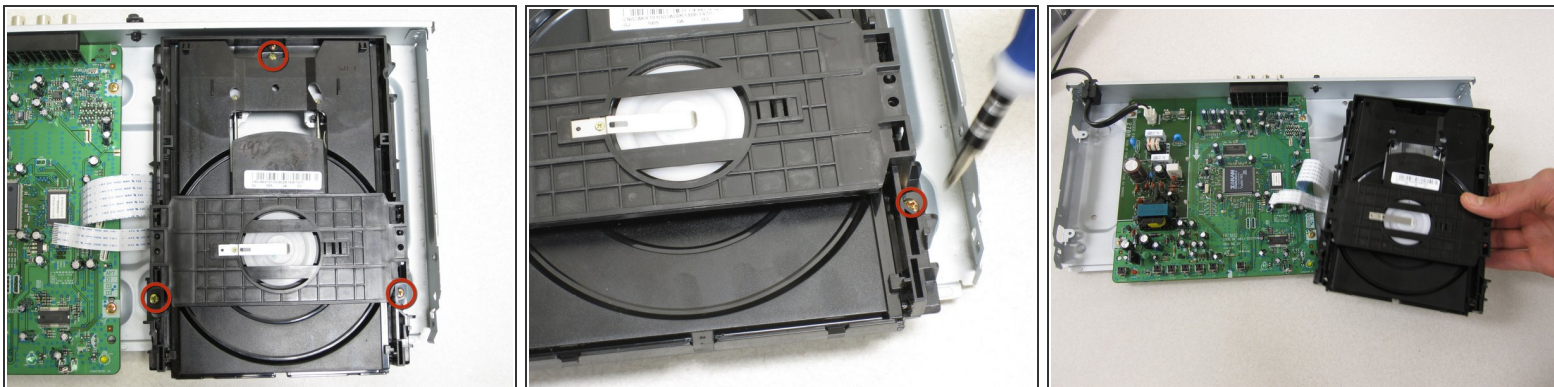
⚠ Turn off the DVD player and unplug it from the wall before proceeding to further steps.

## Step 7 — Repairing Samsung P241 Laser



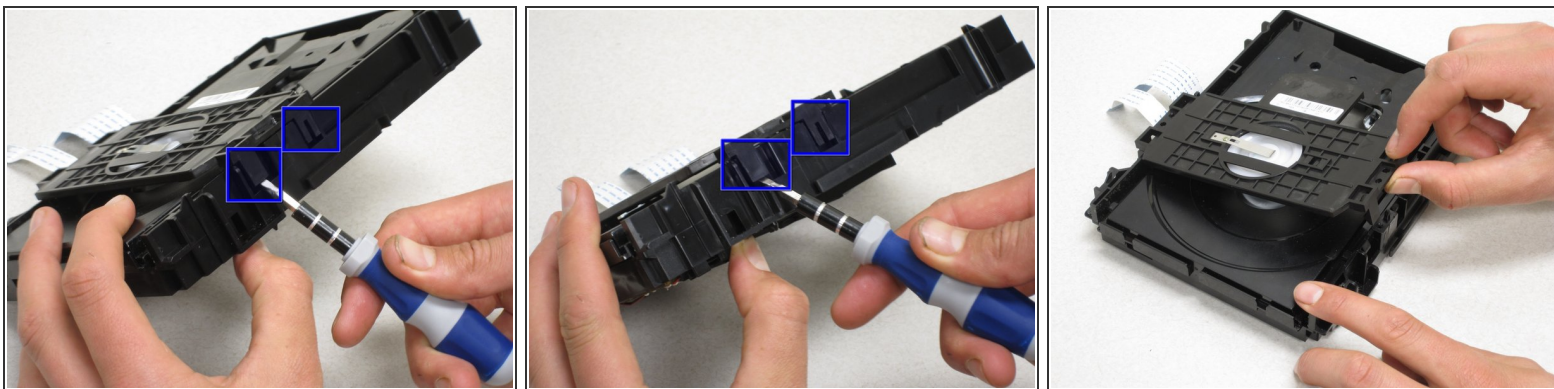
- Remove the two white ribbon cables that connect the motherboard and the disc tray by pulling on the ribbon cable where it attaches to the circuit board.

## Step 8



- Remove the three 0.6 cm gold screws holding the disc tray to the bottom casing with a Philips #1 screwdriver.
- Lift the disc tray out.

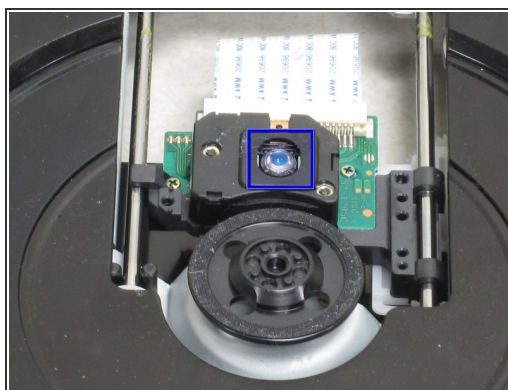
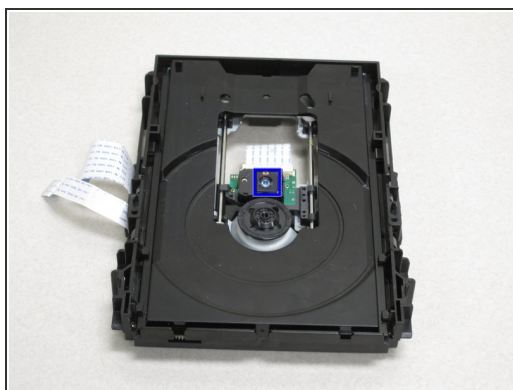
## Step 9



- Remove the top cover of the disc tray by gently prying the clips off with a flathead screwdriver.
- ⓘ You will want to release one side before moving on to the other side, but do not lift the cover off until both sides are released.



## Step 10



- Very gently wipe the laser down with lens cleaner.
- ⚠ Be very careful that no excess cleaner drips down into the disc drive.
- ⚠ Use extreme caution when wiping the laser to avoid damaging it. If too much force is used, it will break or be pushed off-center and will not read the disc properly.

To reassemble your device, follow these instructions in reverse order.