



# Repairing Skullcandy SCS-SCBP SKULLCRUSHERS 3.5mm plug

Oldturkey03 junior dropped her iPod with the over-the-ear headphones plugged in. The iPod fell right on the connector. After that, the audio would only play when bending the connector. This led me to surmise that it was time to fix the plug.

Written By: oldturkey03



## INTRODUCTION

This is a straight forward repair. For those that are reading it, or need to repair their headphones, it will not be necessary to open the control box. I just had to do it to identify the proper channels. This is actually a fun project, total cost \$1.15 for the new connector.



### TOOLS:

- [Phillips #0 Screwdriver](#) (1)
- [iFixit Tech Knife](#) (1)
- [Soldering Iron](#) (1)
- [Flush Wire Cutters](#) (1)



### PARTS:

- [Replacement 3.5mm TRS male connector](#) (1)

## Step 1 — Repairing Skullcandy SCS-SCBP SKULLCRUSHERS 3.5mm plug



- Not very obvious, but the metal plug is actual slightly bend to the left of the picture. There is also some bulging of the plastic around it.
- After a bit more of a manual inspections, the plug actually just fell out.
- Use a small set of side cutters to cut the rest of the plug off.

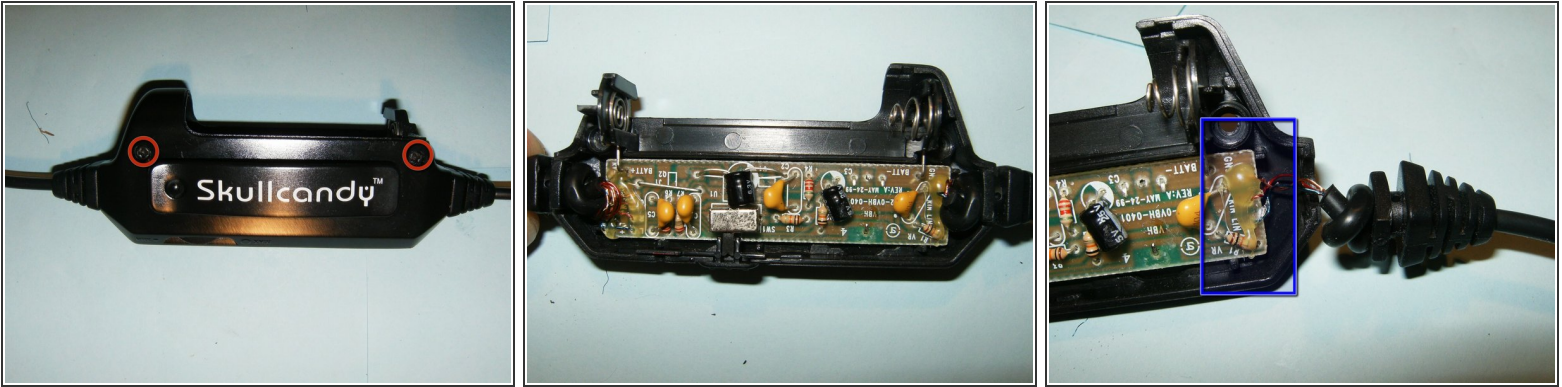
## Step 2



- Use a sharp knife to remove the insulation of the wires. Do it carefully so as to not cut through the wires.
- Here are the three wires in the middle of the cable: red, blue, and gold. Now it is time to figure out which wire goes where.
  - ⚠ The three wires DO NOT have any insulation that can be removed. The colors are actually the insulation and it will melt during the soldering process. Or one can use a lighter and melt the color insulation.
- Remove the battery by sliding the cover to the right.

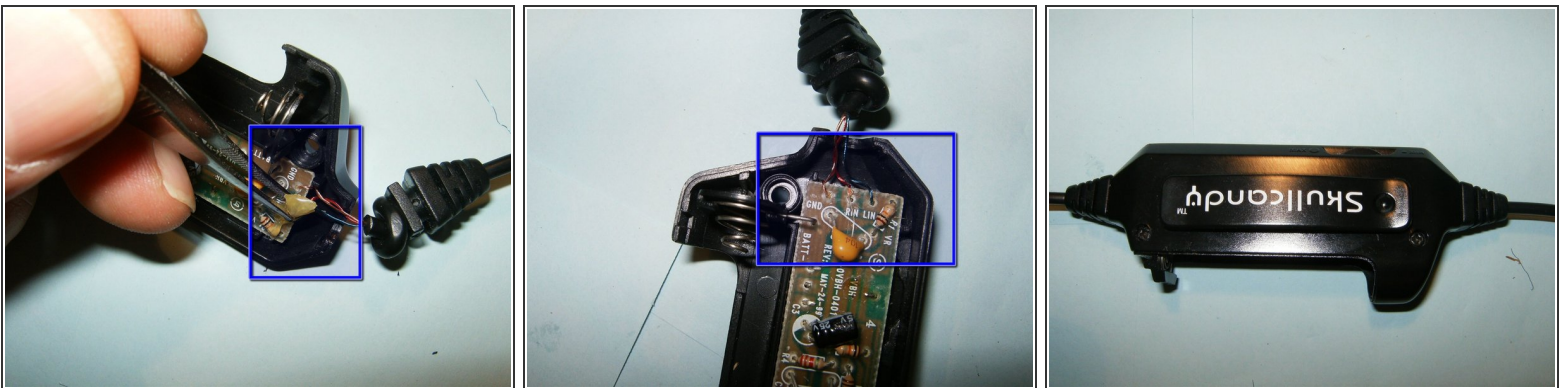


### Step 3



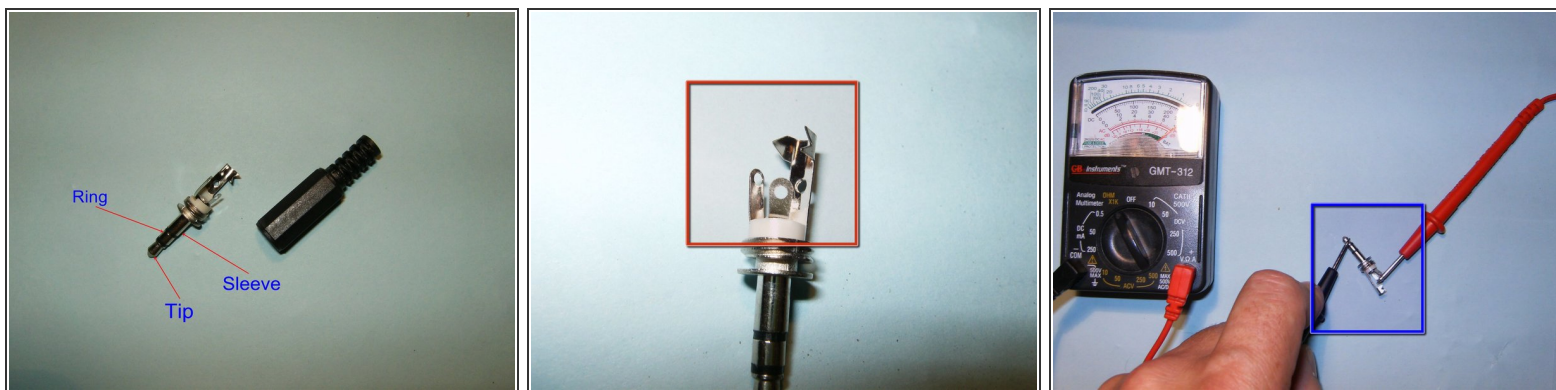
- Remove the two Phillips screws. The casing will simply unsnap.
- The complete circuit board will be immediately visible.
- Here is the connector end. Note the wax on the small wires. This is probably to prevent the very small wires from moving too much on the board.

### Step 4



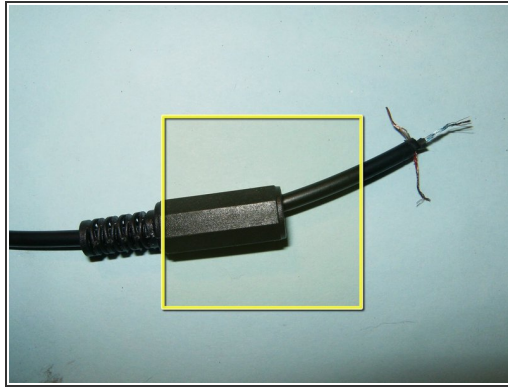
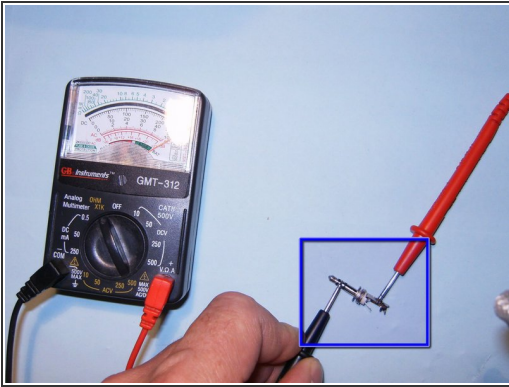
- Remove the wax if it is too difficult to identify which wire goes where.
- Now the wires can easily be identified. Gold is common ground, red is the right channel, and blue is the left channel.
- The control box can now be closed again. Apply a few dabs of hot glue over the wires to remove the wax that was previously removed.

## Step 5



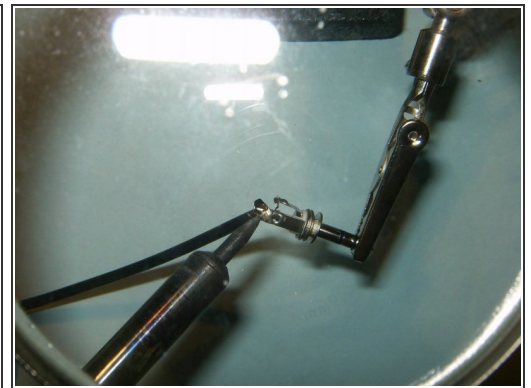
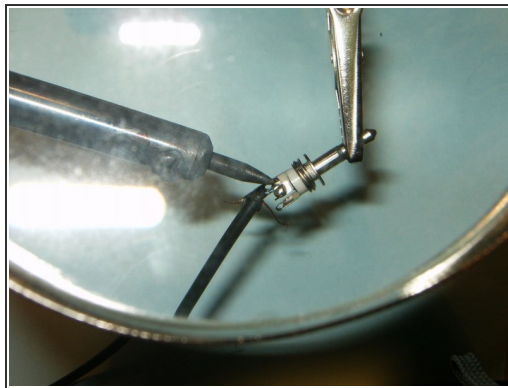
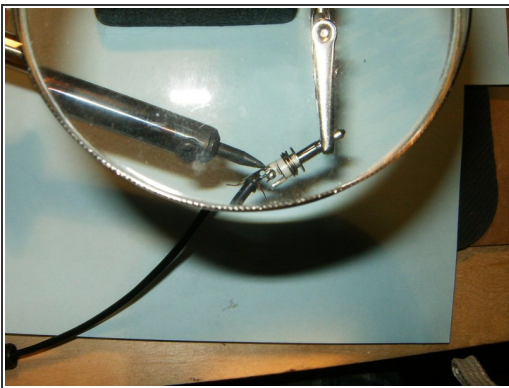
- Here is the replacement 3.5mm TRS plug.
- TRS stands for tip-ring-sleeve, and is the standard connector for audio jacks.
- The bottom of the jack has three connectors that each correspond to the tip, ring, or sleeve.
- With one probe constantly on the tip of the jack, probe the three connectors with a multimeter until you have continuity; this is your tip connector.

## Step 6



- Move the stationary probe to the ring terminal and repeat the previous procedure to identify the ring connector.
- The remaining connector corresponds to the sleeve. In this case, it is the longest connector.
- Slide the plastic sleeve over the headphone cable. Make sure that it is installed with the larger opening to the wire end.
- To assist with soldering the small wires, a tool like this third hand is a big help, but not a necessity.

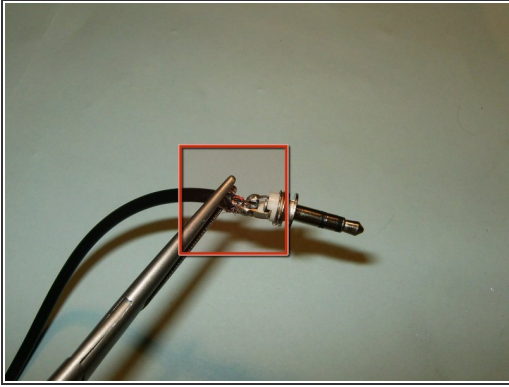
## Step 7



- The tip connector on most MP3 players is for the left channel. Solder the blue wire to the tip connector. On this plug it is the shortest one.
- Solder the red colored wire to the ring (middle) connector
- Finally solder the gold colored wire to the sleeve (longest) connector.



## Step 8



- Crimp the end of the longest connector over the wire. This will help to prevent the tearing of the solder connection, when the headphones are disconnected by pulling on the cable.
- Finally attached the cover to the plug.
- Result is another successful repair accomplished. Sorry oldturkey03 junior, no Dr. Dre this time. Rock on.....:)

To reassemble your device, follow these instructions in reverse order.