



Repairing TRITTON Kunai Left Speaker

This guide will walk you through repairing the left speaker on your headset if our troubleshooting page proved insufficient. Please follow these instructions carefully and soon your speaker will be working.

Written By: Timothy Meyer



INTRODUCTION

This is a comprehensive guide explaining how to disassemble your headset, locate any problems with your left speaker, and repair them. This guide requires a soldering station and is very difficult. If your left speaker is broken and needs to be replaced, we have a guide for that too, but you cannot purchase a replacement speaker from the manufacturer so you will need to find a donor part. If you follow this guide through to the end you will cause irreversible damage to your headset; you will be able to reassemble a functioning device though. This repair takes from 15 minutes to 2 hours depending on how many steps you must complete. If you are not up to the task, I suggest checking out the warranty in the [TRITTON Kunai User Guide](#) to see if you can capitalize on it.



TOOLS:

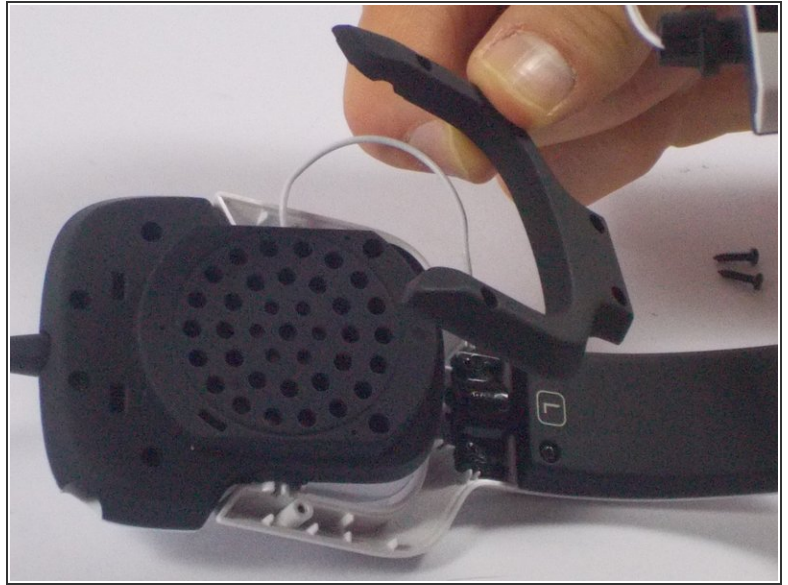
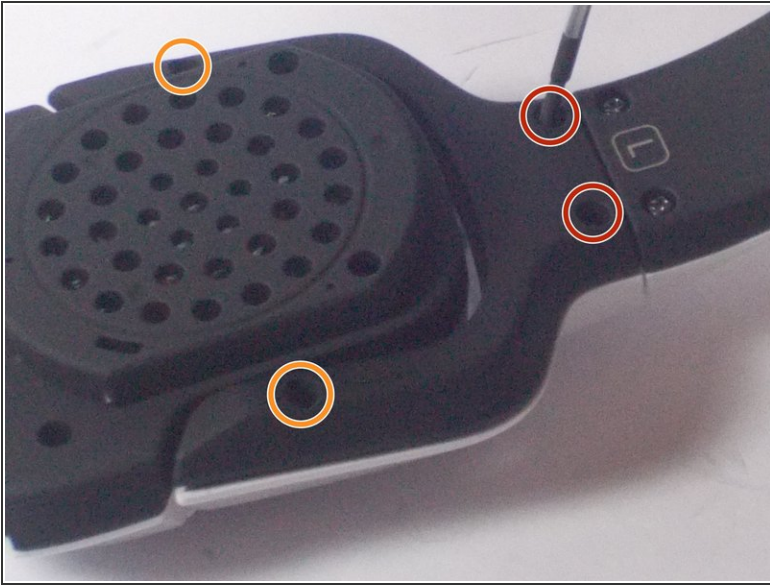
- [Phillips #00 Screwdriver](#) (1)
 - [Soldering Iron](#) (1)
-

Step 1 — Repairing TRITTON Kunai Left Speaker



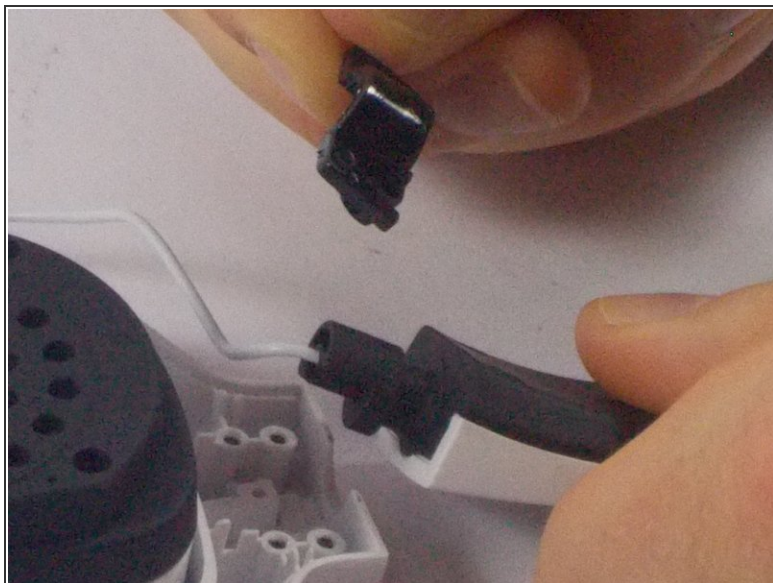
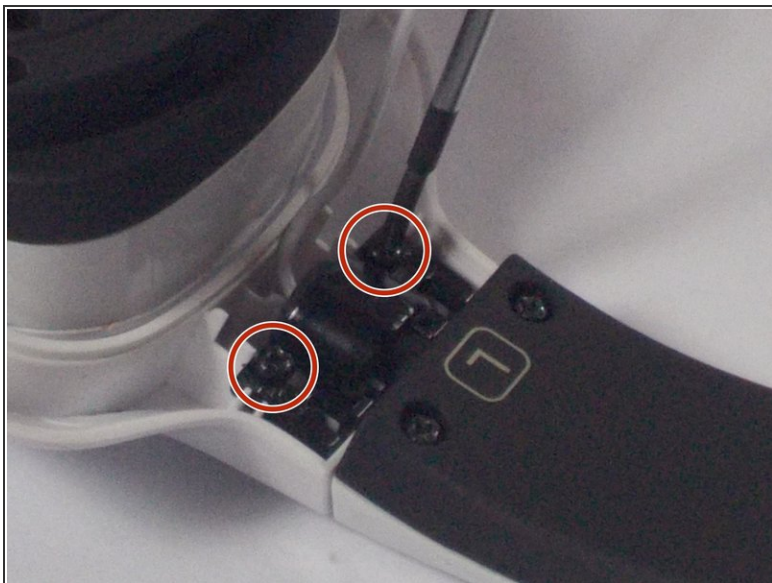
- Firmly grasp the black ear cushion with one hand and the white speaker frame with the other hand.
- Forcibly pull the ear cushion and speaker frame in opposite directions, until the left ear cushion separates from the left ear frame.

Step 2



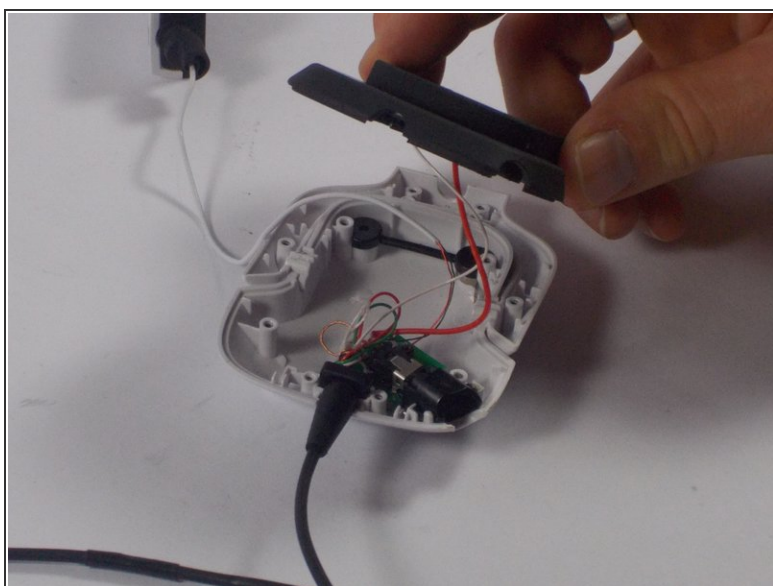
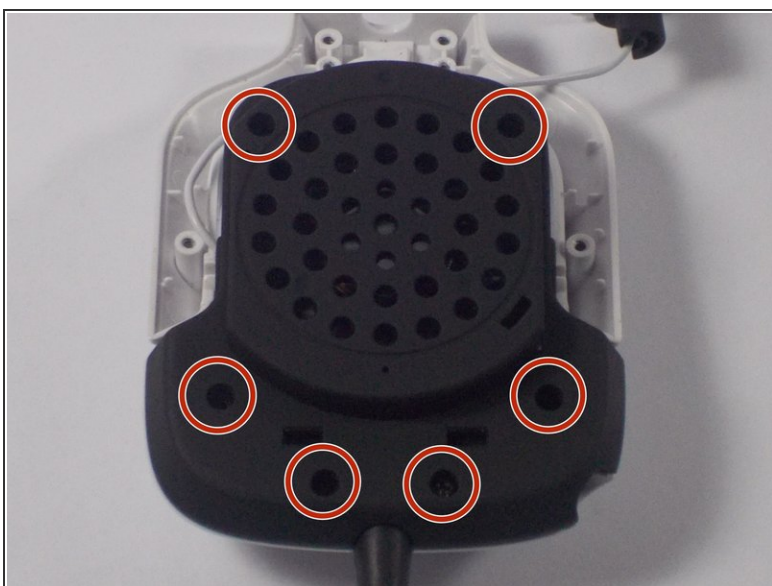
- Remove the two 9 mm Phillips #00 screws.
- Remove the two 7 mm Phillips #00 screws.
- Separate the black horseshoe shaped frame from the left speaker frame.

Step 3



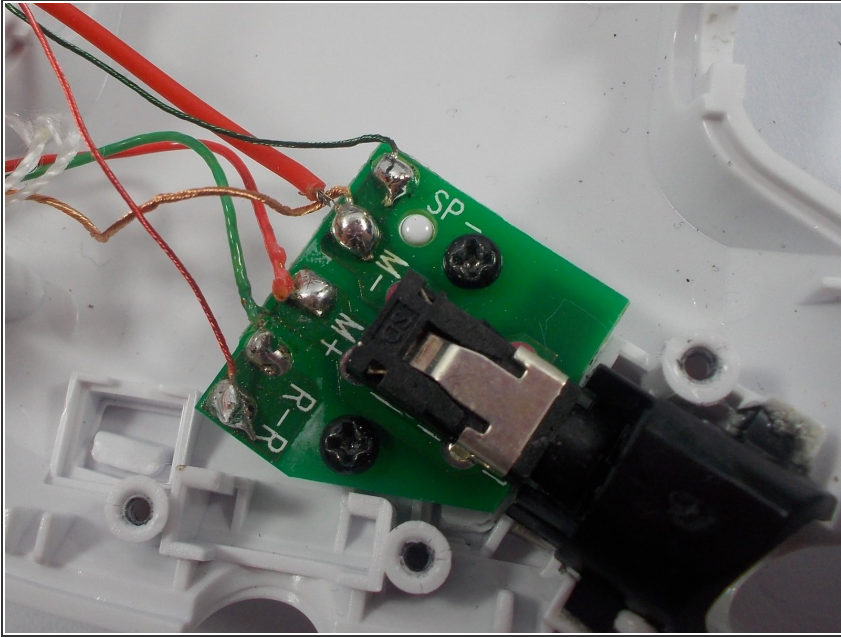
- Remove the two 7 mm Phillips #00 screws.
- Separate the black bracket and then the rail adjustment from the left speaker frame.

Step 4



- Remove the six 7 mm Phillips #00 screws.
- Separate the black speaker console from the left speaker frame.

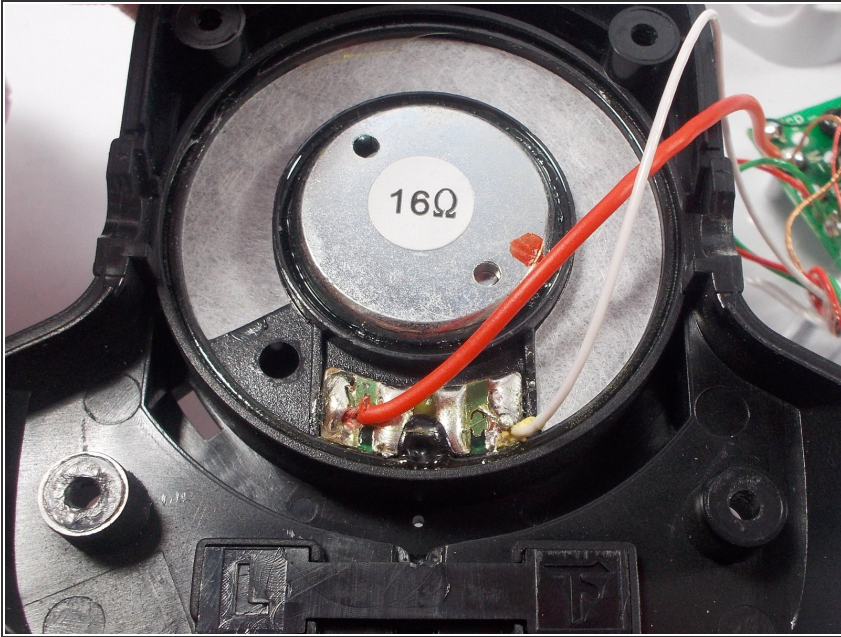
Step 5



- Place your left speaker frame on a flat surface with the five metal terminals located on the green chip facing away from you.
- Make sure the green rubber wire is connected to the second left terminal, the small red rubber wire is connected to the middle terminal, and the gold wire and large red rubber wire are connected to the second right terminal.
- Solder the wires into place if they are not properly connected. [Here is iFixit's soldering guide.](#)
- Test your headset if you had to solder any wires before moving to the next step.
- If your speaker is now working, good job, put your headset back together. If your speaker is still not working examine the wires for any damage or disconnections.
- Reconnect any damaged or disconnected wires and secure your wires into place with electrical tape. Here is our [wire repair guide.](#)
- Test your headset if you had to reconnect any wires before moving to the next step.

- If your speaker is now working, good job, put your headset back together. If your speaker is still not working, continue to step 6.

Step 6



- Place the right speaker console face up with the four speaker terminals situated below the 16 Ohm speaker like so.
- Make sure the red wire is connected to the far left terminal and the white wire is connected to the far right terminal; if this is not the case solder your wires into place. [Here is iFixit's soldering guide.](#)
- Test your speaker.
- If your speaker is now working, good job, you can put your headset back together.
- If your speaker is still not working you need to replace the right speaker. Check out our [left speaker replacement guide.](#)

To reassemble your device, follow these instructions in reverse order.