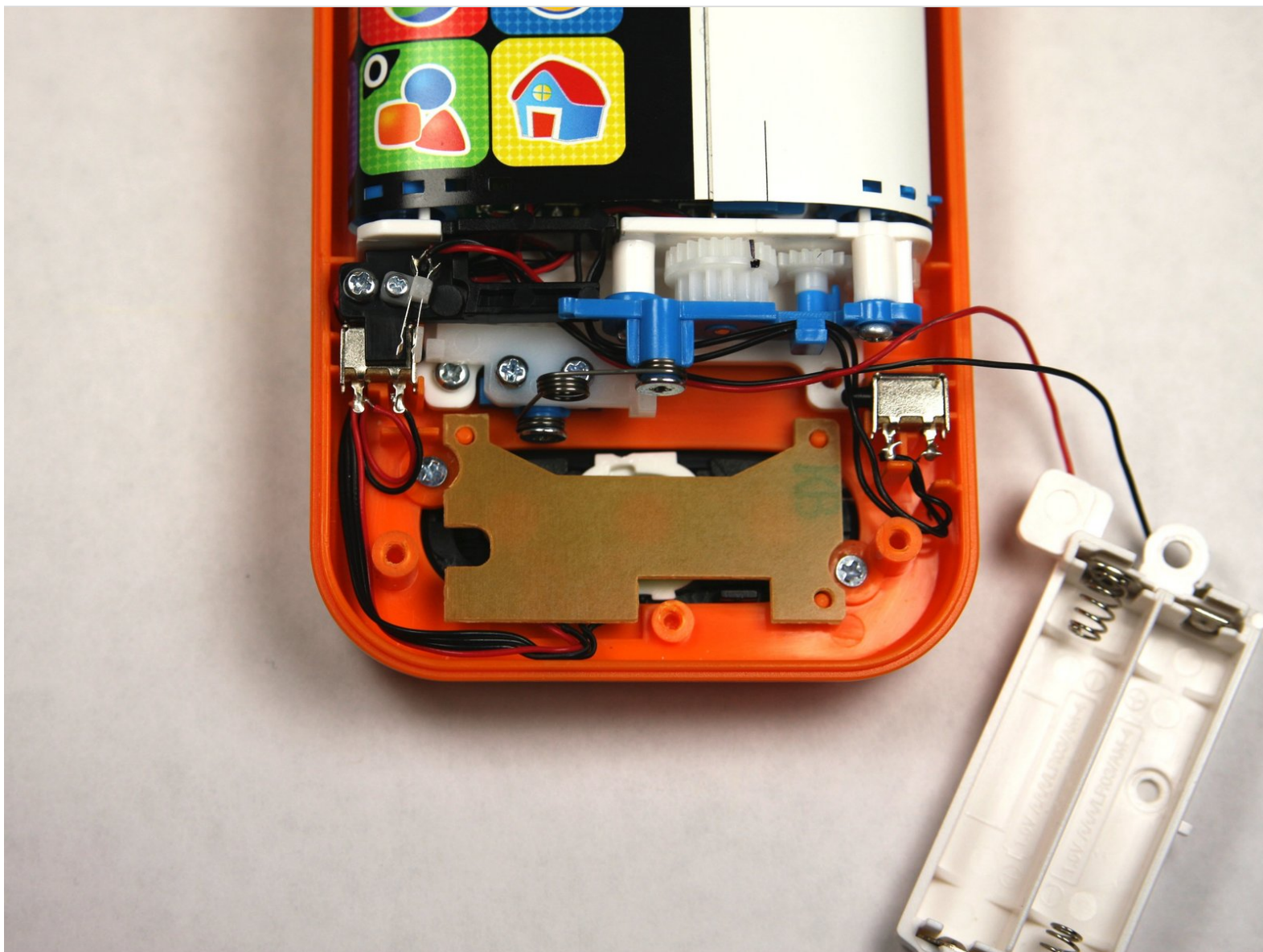




Repairing VTech Touch and Swipe Baby Phone Battery Pack

The battery pack which holds the batteries is soldered on to two wires, and this soldering may have a weak contact with the wires or been entirely removed. If this has occurred your device will not function.

Written By: Zack Drawdy



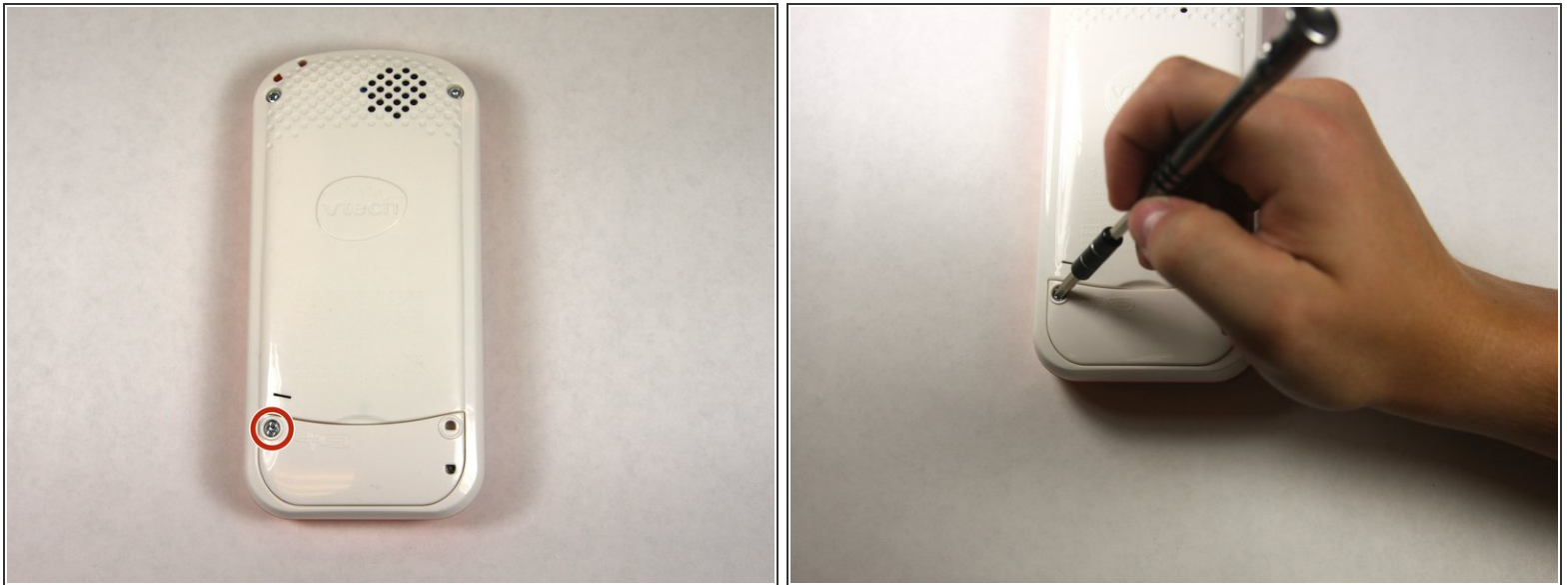
INTRODUCTION

This guide will required soldering, and if you do not have experience with soldering you should first read up on this process as it requires the use of a dangerous tool.

TOOLS:

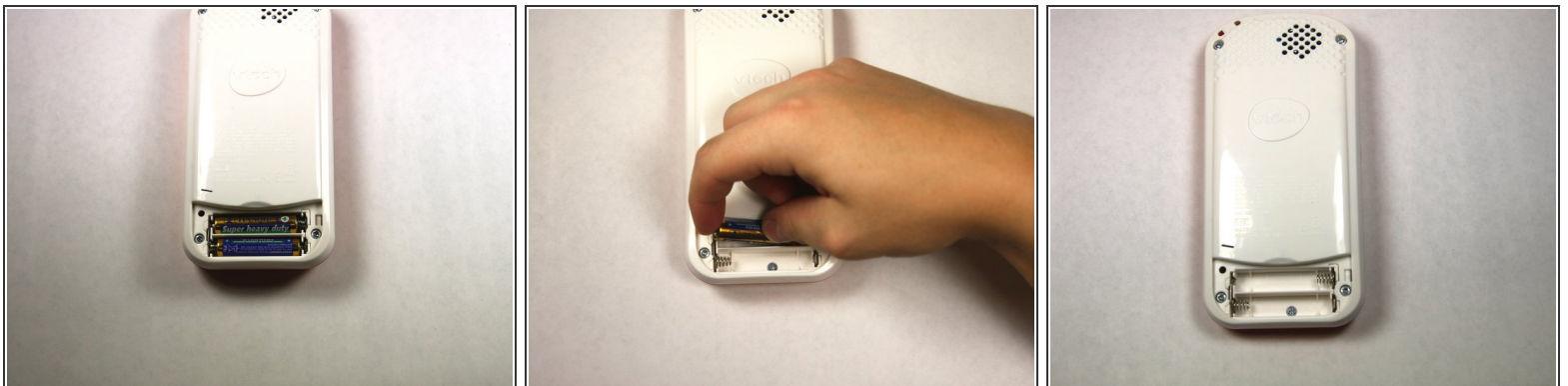
- [Phillips #1 Screwdriver](#) (1)
 - [Phillips #0 Screwdriver](#) (1)
 - [Soldering Iron](#) (1)
-

Step 1 — Battery



- Using a Phillips #1 screwdriver, remove the 4.8mm Phillips #1 screw on the battery cover by twisting the screwdriver counter-clockwise.

Step 2



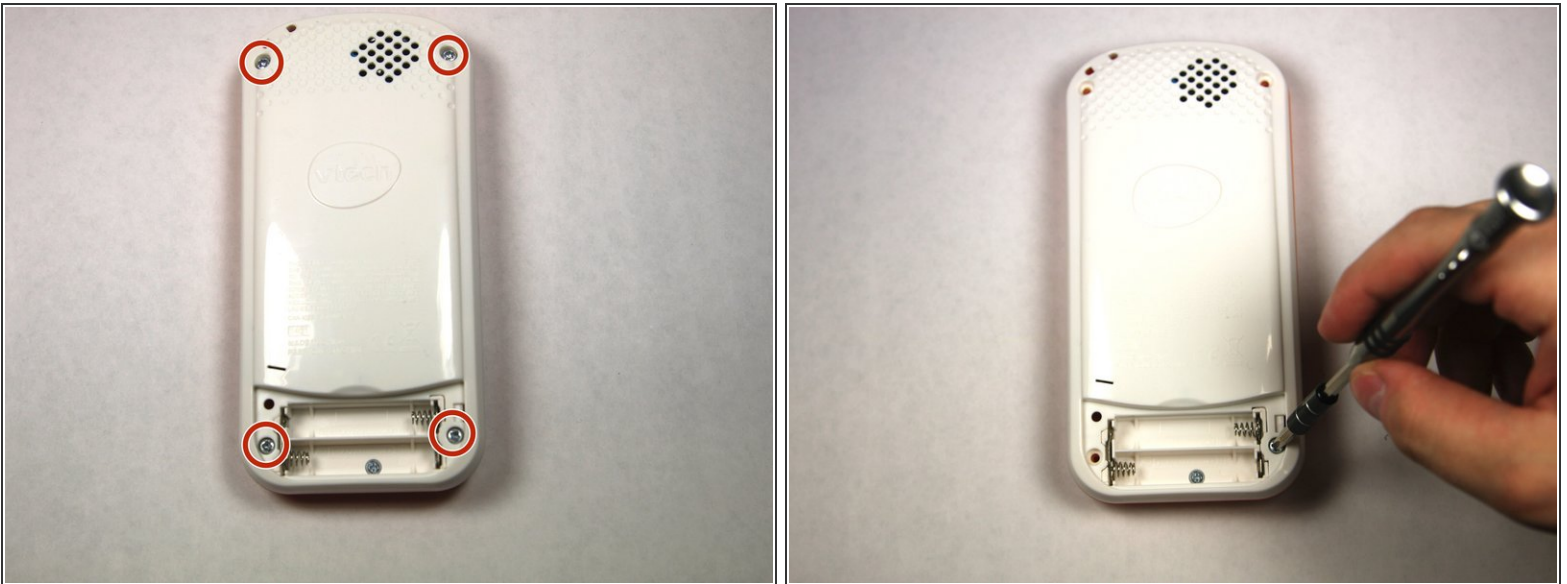
- Then simply remove the two AAA batteries by pulling on one end of the battery and lifting it straight out.

Step 3



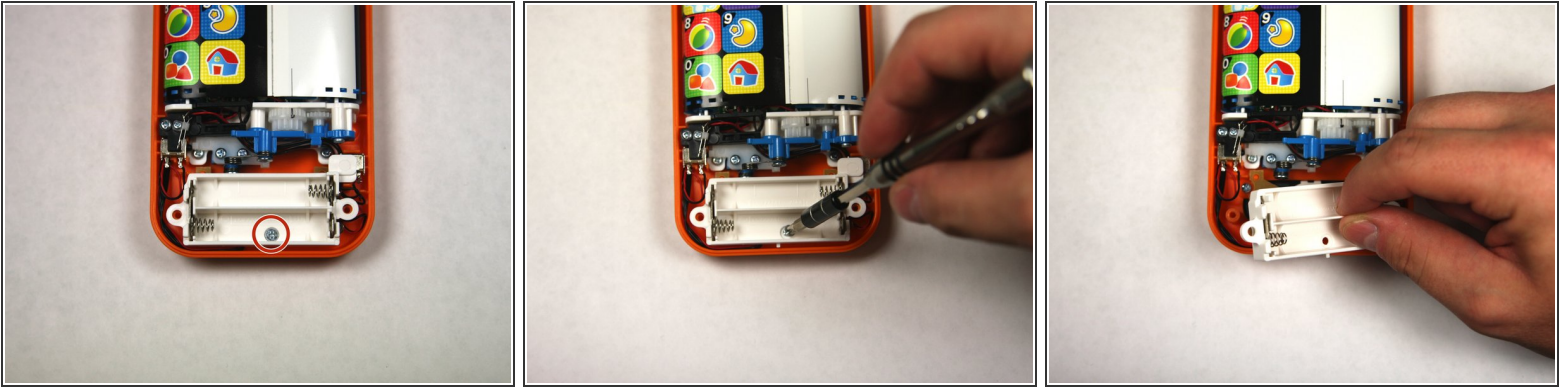
- Take care when you want to close it. There is a notch.
- First you have to hook up that notch.
- Then firmly use a PH1 screwdriver to secure it.

Step 4 — Repairing VTech Touch and Swipe Baby Phone Battery Pack



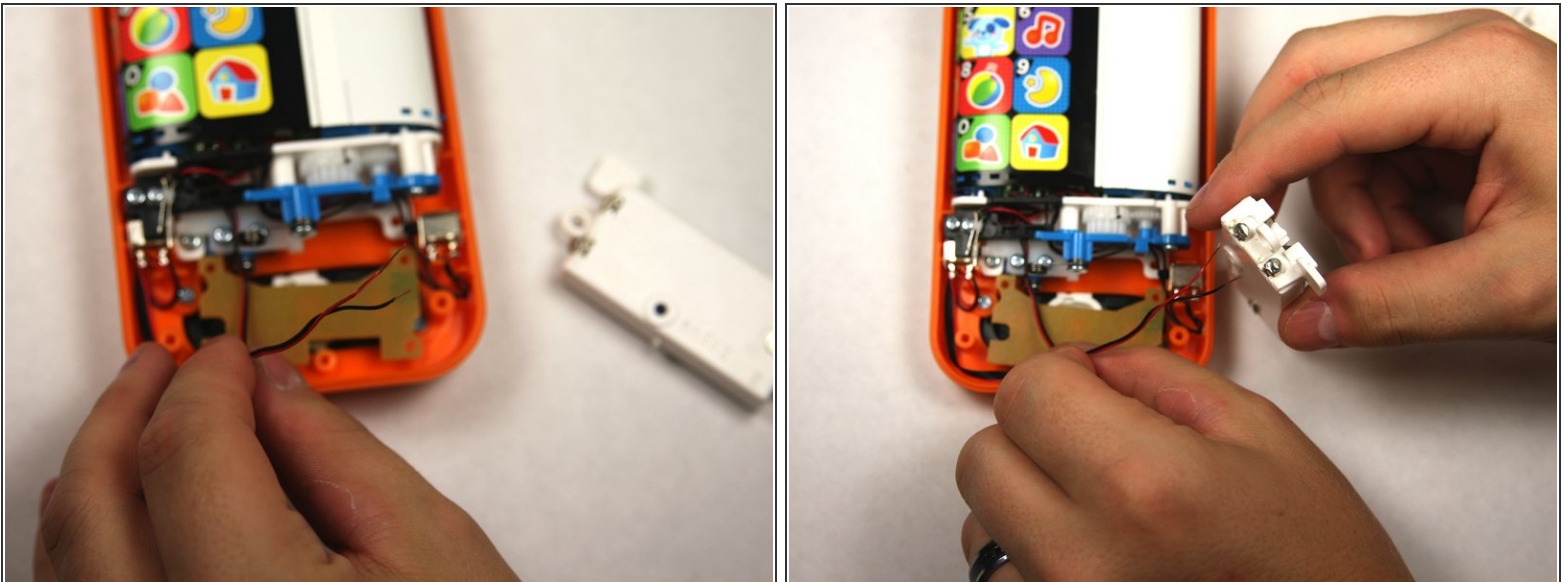
- Remove 4 13.8mm screws holding the device back using a Phillips #1 screw driver.

Step 5



- Remove the 1 4.8mm phillips head screw with a #0 Phillips head screw driver and lift away the battery pack being careful not to tug on the wiring.

Step 6



- If the batty casing solder has been disconnected you will see that the pair of red and black wires near the battery pack are no longer connected.
- You will need to solder back on these wires to the two silver soldering plates on the battery case. The black wire should be soldered on to the plate closer next to the square plastic piece attached.
- ⓘ Make sure to correctly solder each wire as shown, because if you solder the red wire where the black wire should be your device will not function.

To reassemble your device, follow these instructions in reverse order.