



# Repairing iPad 4 Wi-Fi Dented corner and lateral case wall.

Two common areas of the iPad case that are frequently damaged and not so easily repaired are the corners and the thin lateral wall near the volume control. I have used a tool new to me called Pliertek for both and I am very pleased.

Written By: Travers Edwards



---

## INTRODUCTION

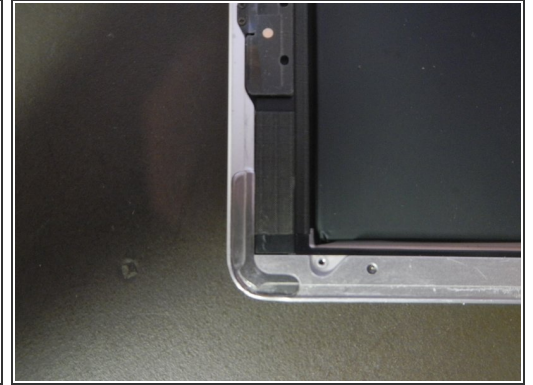
The basic combo kit has both the corner and wall straightening tools at a very reasonable price. The tool head can be changed in 2 minutes with an included Allen Key. The arms of the pliers are long and sturdy and I was able to vary my grip with my dominant hand easily. I am pleased with the appearance of my straightening work and pleasantly surprised that Pliertek sells for about 1/3 of a Gtool combo. <http://www.pliertek.com>



### TOOLS:

- [PlierTek Corner and Sidewall Repair Pliers](#)  
(1)
-

## Step 1 — Pliertek compression reforms iPad corner



- Pliertek wall mold attached; corner mold below.

## Step 2 — Straight wall mold preserves the bezel groove.



- Straight wall mold easily installed with an Allen Key.

Tool marks and case dings resulting from the use of this tool can be removed with P800 Emery paper available in an auto parts store.