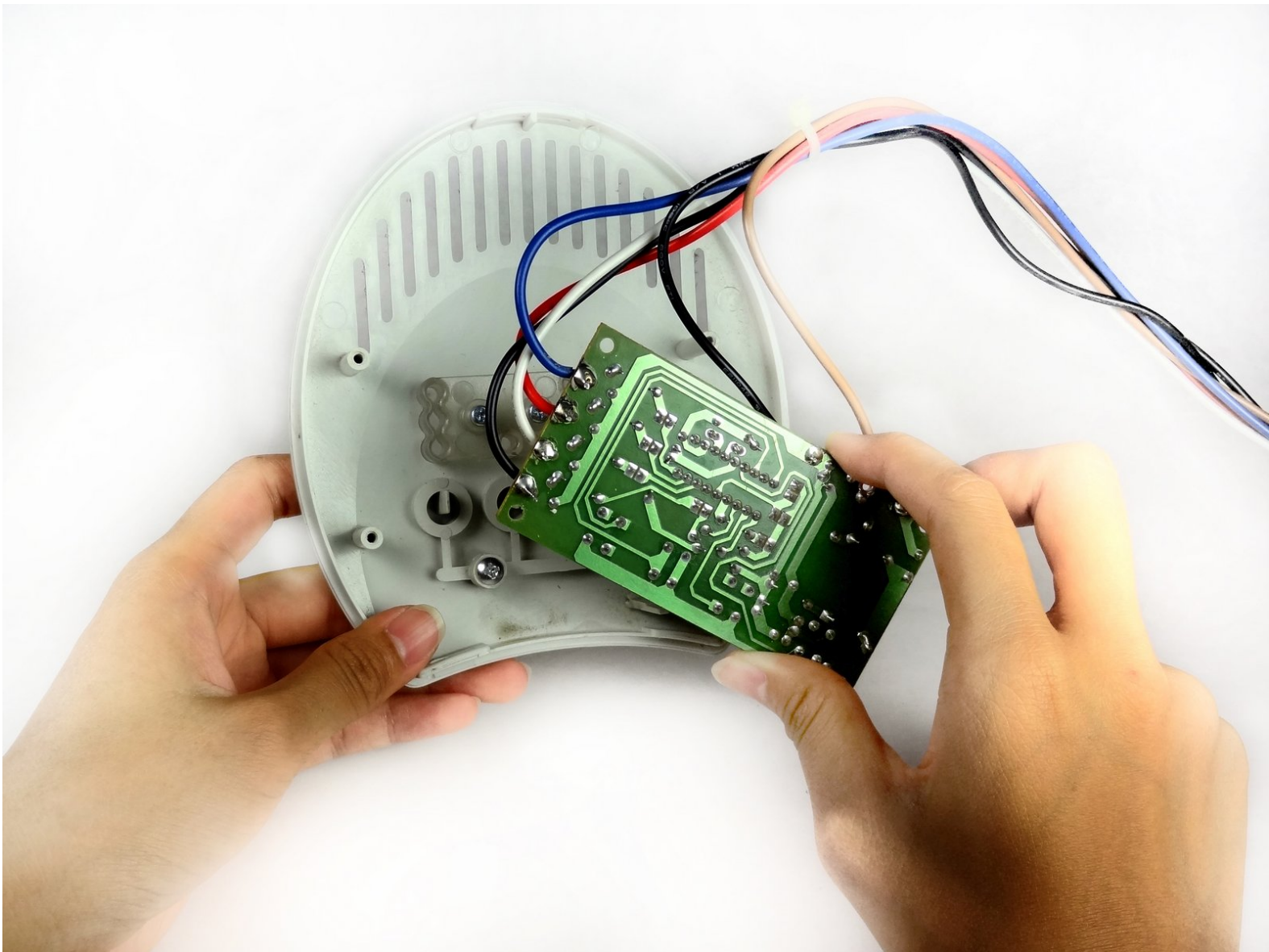




# Repairing the LEDs

Follow this guide to fix the LEDs on your Fan.

Written By: Queena Phung



---

## INTRODUCTION

This guide will show you how to get to the LEDs and how to inspect the circuit board. If there is a faulty connection or a loose wire, this guide shows displays a quick solution.

---

### TOOLS:

- [Phillips #2 Screwdriver](#) (1)
  - [Soldering Iron](#) (1)
-

## Step 1 — Installing the PCB (Printing Circuit Board)



- Use a Philips #2 screwdriver to unscrew the four 6mm Phillips #0 back screws.
- ⓘ Do this by unscrewing from left-to-right then pull the screws out of the back of the fan

## Step 2



- Pull the front and back cover apart.
- ⚠ Be careful not to pull the front cover off completely because it holds the wires.

### Step 3



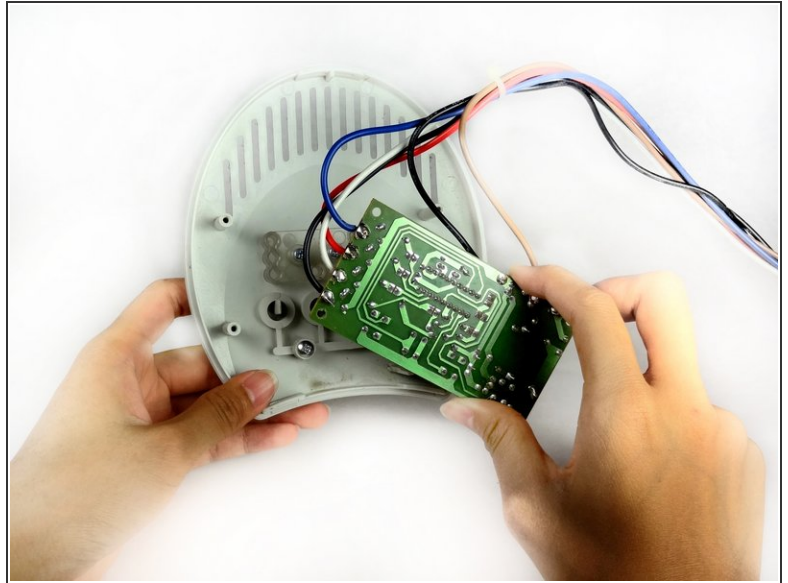
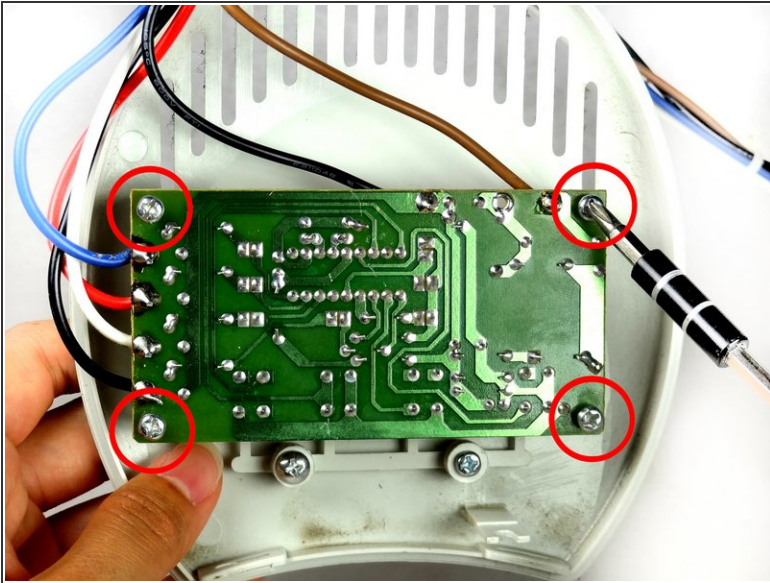
- Remove the Phillips (5-mm head) 6-mm screw that holds the circuit board to the outer shell of the fan.
- ⚠ Make sure the fan is unplugged while removing the circuit board as you may get shocked.

### Step 4



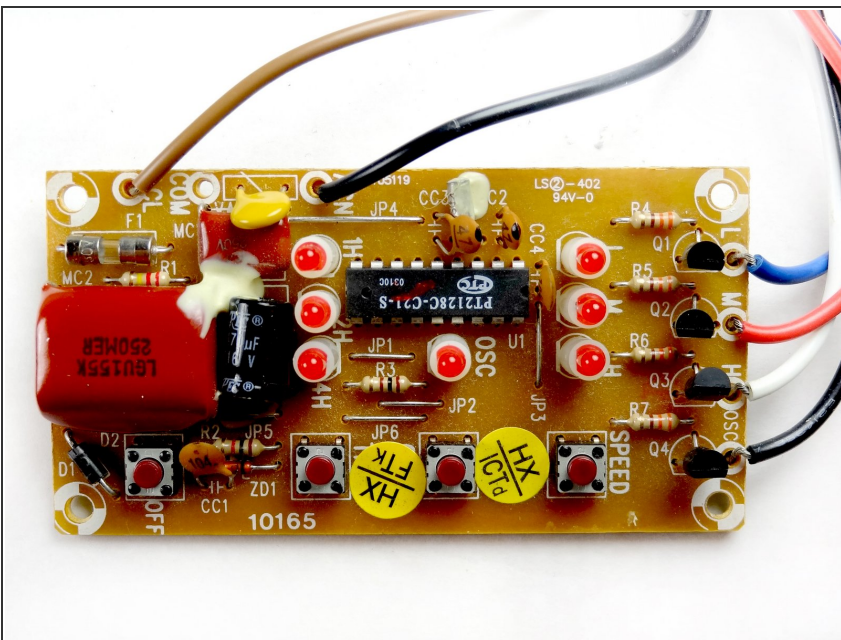
- Remove the top cover containing the circuit board and the wires by pulling it away from the body of the fan.

## Step 5



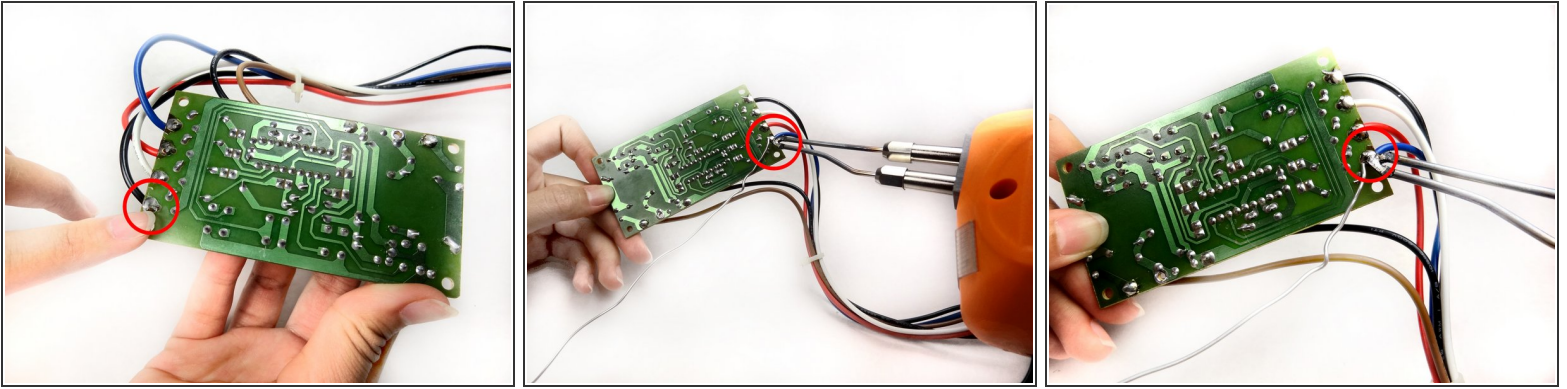
- Remove the circuit board from the top cover. Do not touch the other side of the circuit board as you may damage circuit elements.
- ⓘ Unscrew the four screws on the top of the circuit board in a left-to-right fashion. After pull screws out of the board.

## Step 6 — LEDs



- The picture reveals the top side of the printed circuit board that contains the LEDs.
- Inspect the PCB for any faulty connections or loose components.

## Step 7



- Make sure the wires on the side of the board are properly connected.
- If the wires have are not connected properly, res-older them to the board.

To reassemble your device, follow these instructions in reverse order.