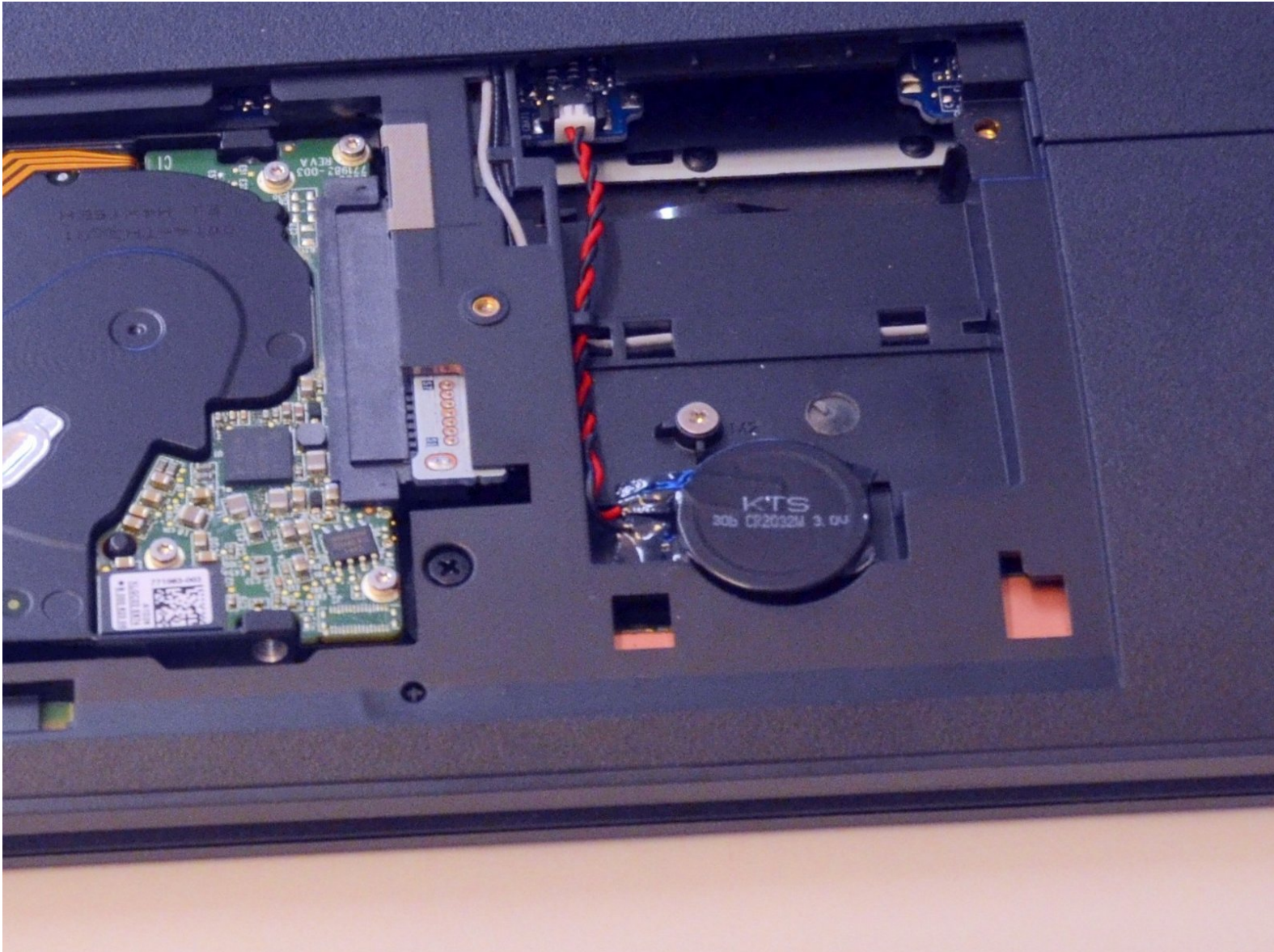




# Replace BIOS battery

Written By: Felice Suglia





## TOOLS:

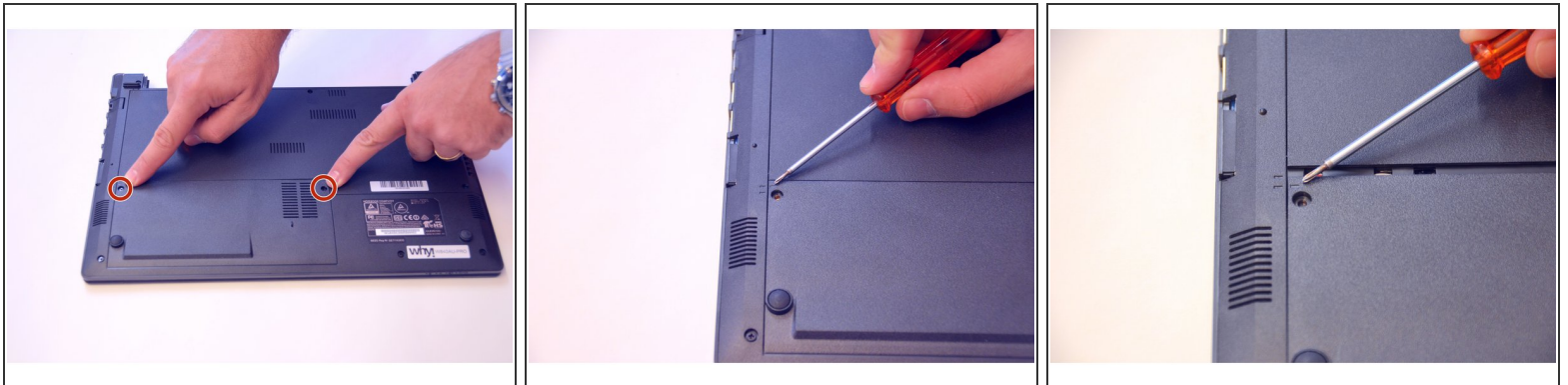
- [Phillips #0 Screwdriver](#) (1)
-

## Step 1 — Battery



- Open the latch on the right side that secures the battery in place.
- Open the latch on the left side that secures the battery in place.
- Now remove the battery.

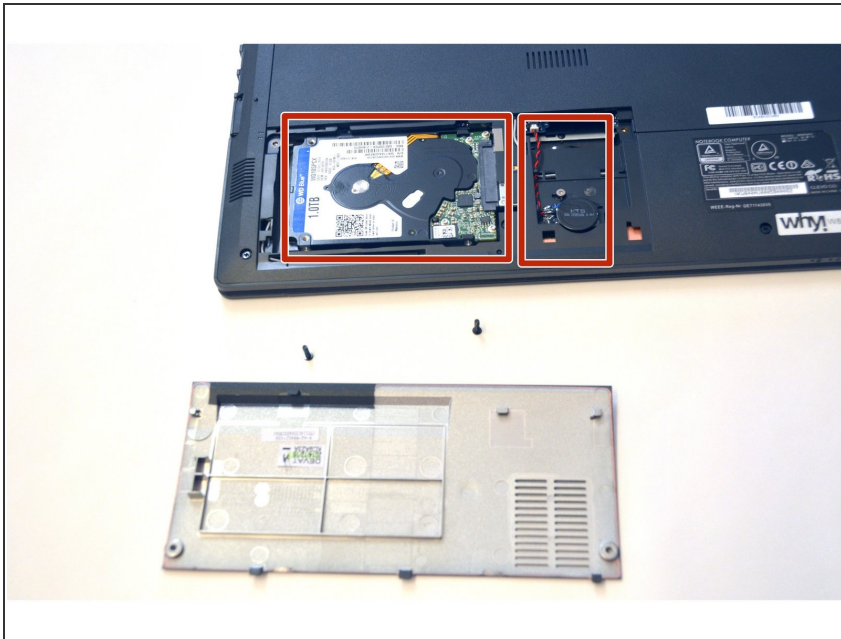
## Step 2 — Access to the components 1



- Use the Philips screwdriver to remove the two screws on the bottom cover.
- Check the markers to determine how to remove the cover.
- Now remove the cover as prescribed by the markers.

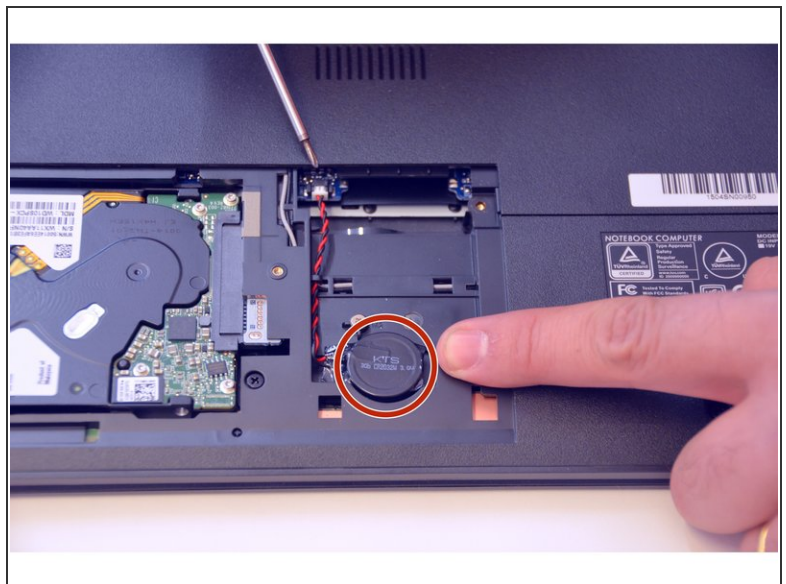
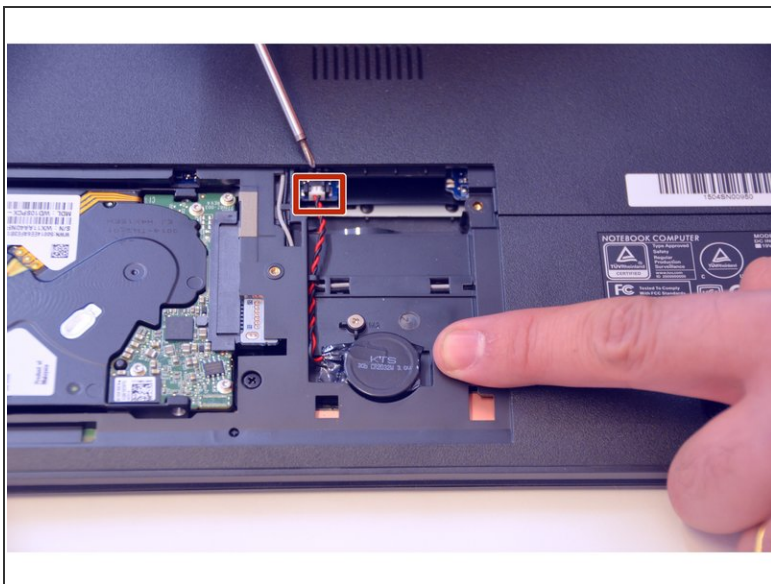


### Step 3



- The components HDD hard disk and BIOS battery are now visible.

### Step 4 — BIOS battery



- Pull out the plug of the battery first.
- Then carefully remove the battery (attention glue).

To assemble the device again, proceed in reverse order.