



# Replace BlackBerry 7130e Speaker

Written By: Sean Tiernan



# INTRODUCTION

How to replace speaker



## TOOLS:

- [iFixit Opening Tools](#) (1)
- [T6 Torx Screwdriver](#) (1)



## PARTS:

- [BlackBerry 7130e Speaker Phone Chipset](#) (1)

## Step 1 — battery



- Turn the phone over so that the screen is facing the work surface

## Step 2



- Press your thumb against the battery latch. While pressing on latch, slide off battery cover towards the bottom of the phone.
- ⓘ You may need to apply considerable force on the latch at the bottom of the phone to complete this successfully.

### Step 3



- Remove the battery by pushing downward on the area where prongs connect to bottom inside of the phone while using a thumb, finger, or tool to pull on the top of the battery to lift it out.

### Step 4 — BlackBerry 7130e Disassembly



- Using the T6 Torx screwdriver, remove the bottom two screws on the back of the phone.



## Step 5



- Remove speaker phone cover by unsecuring the two latches on the edge close to top of the phone with the plastic opening tool.

## Step 6



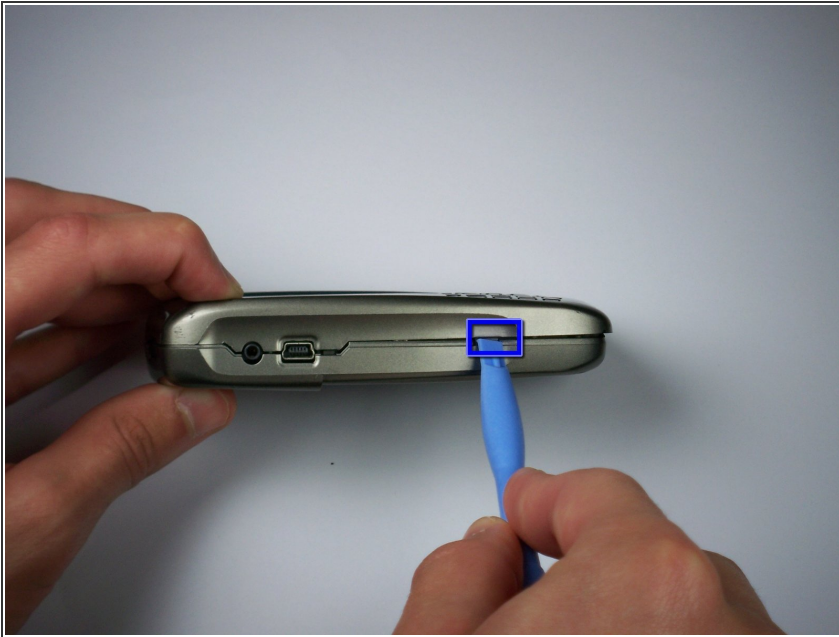
- Detach the speaker phone cover by pulling up on the bottom of the speaker phone cover.
- ⓘ As you detach the speaker phone cover you will notice a sticky glue sealing the rubber gasket from the cover to the speaker mesh. This is normal and will correctly reset the first few times the pieces are separated.

## Step 7



- Remove top two screws with T6 Torx screw driver, from the back of phone.

## Step 8




- Turn the phone sideways and unlatch the hinge on one side of the phone by pushing inwards and twisting to the side with the plastic opening tool.

## Step 9



- You should now be able to easily separate the phone into two pieces.

 The battery prong may fall out when the separation occurs, just don't lose it!



## Step 10 — speaker



- Set aside the bottom part of the phone.
- Drop out the rubber keypad from the top, so that it does not get in the way.

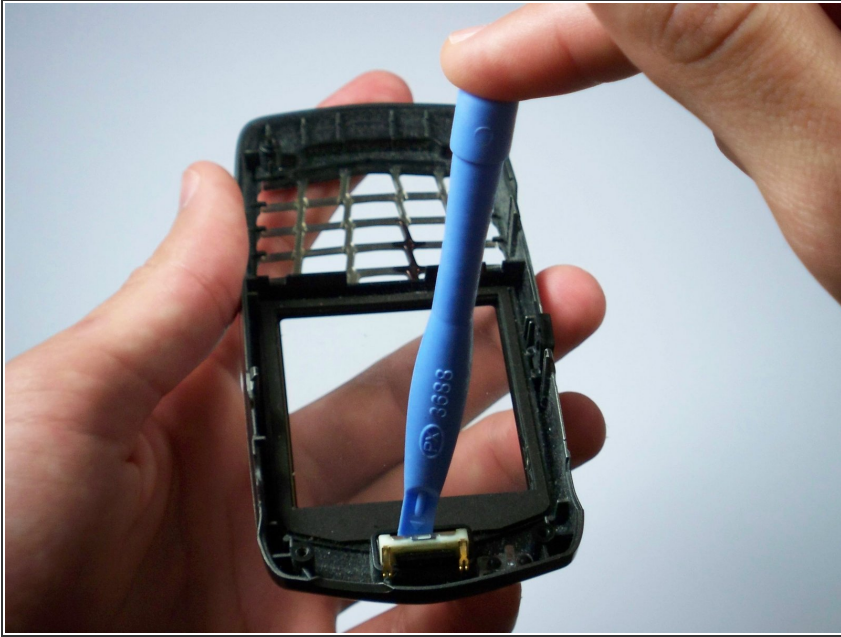
## Step 11



- Use the plastic separator tool to apply significant pressure in a downward motion on the top of the white speaker unit.



## Step 12



- The speaker unit should become loose.
- You can now push the separating tool beneath the speaker and pop it out.
- Once the defective unit is removed, pop your new speaker unit back into place.

To reassemble your device, follow these instructions in reverse order.