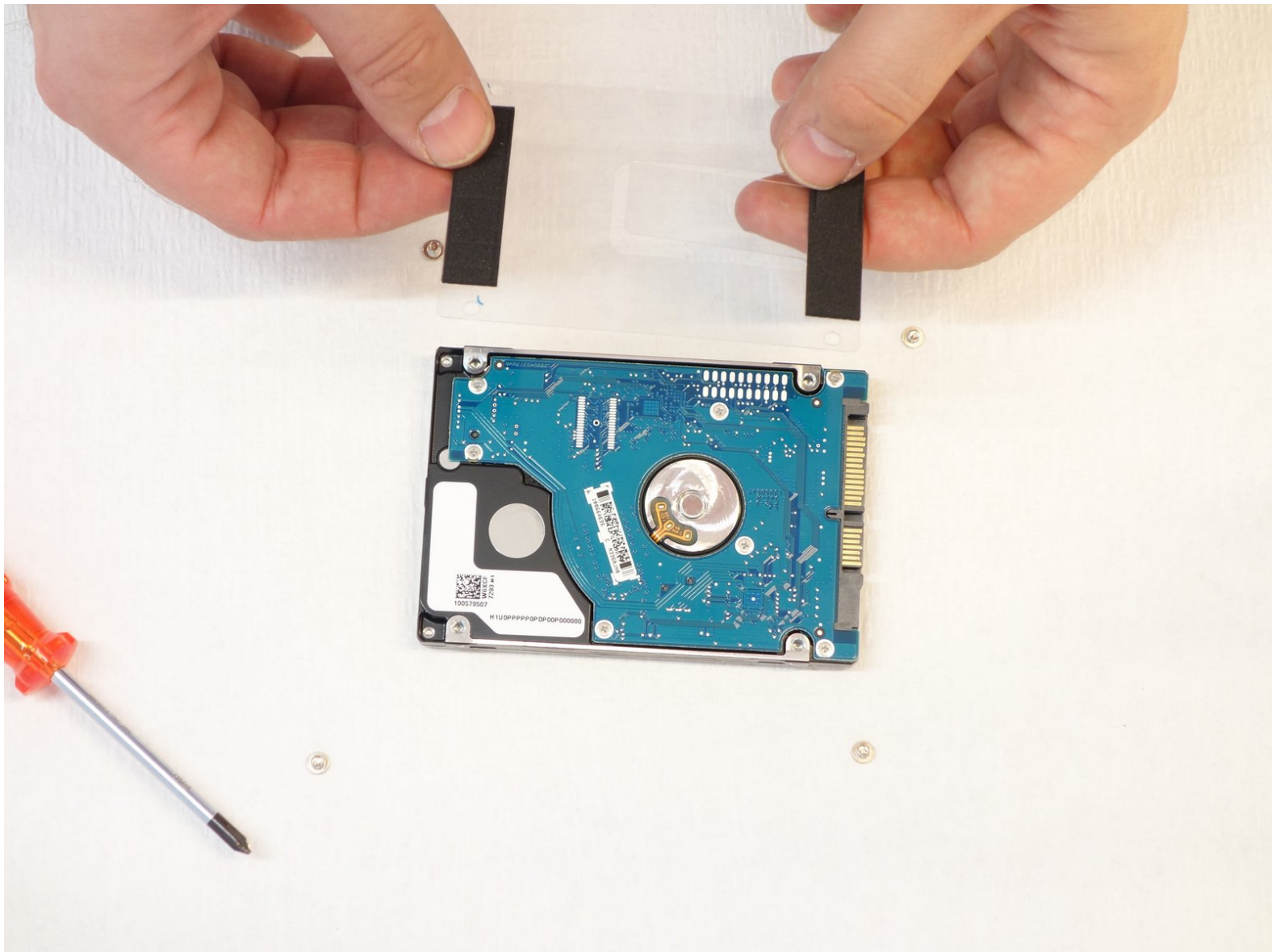




# Replace hard drive why! W253EU (German)

Follow these instructions to replace the hard drive.

Written By: Felice Suglia



## INTRODUCTION

The same instructions can also be used to replace the original hard drive (SATA 500 GB, 5'400 rpm) with a more powerful hard drive or an SSD hard drive.



### TOOLS:

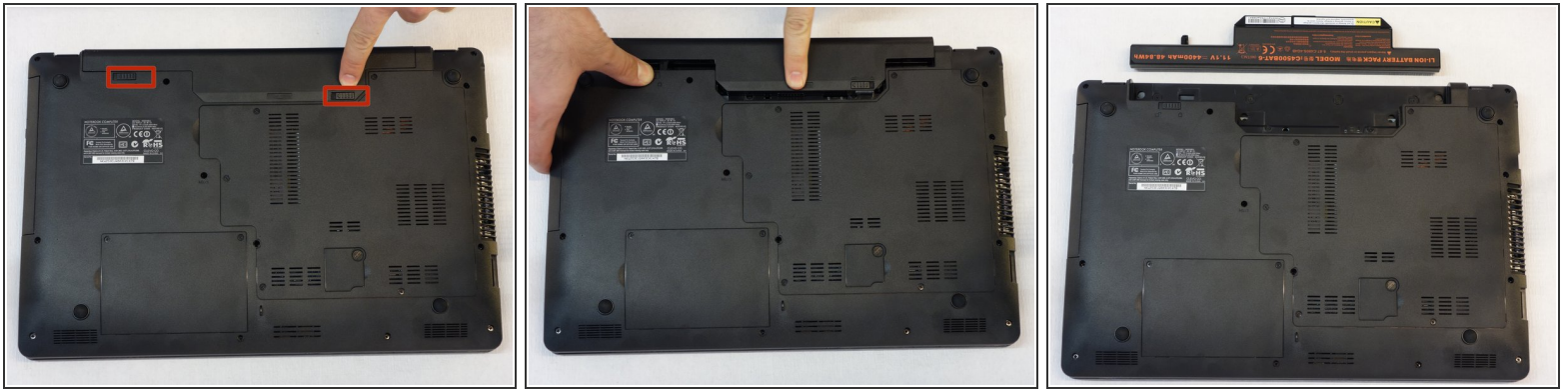
- [Phillips #1 Screwdriver](#) (1)



### PARTS:

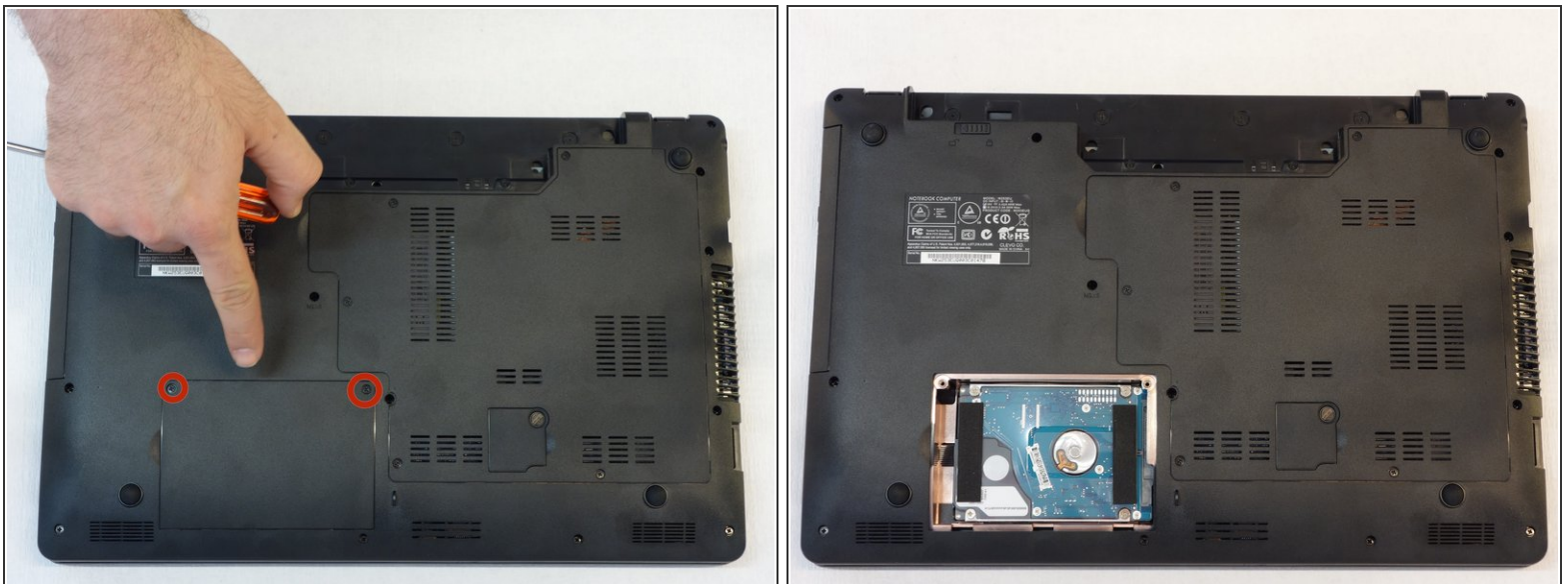
- [500 GB 5400 RPM 2.5" Hard Drive](#) (1)

## Step 1 — Battery from why! Remove W253EU



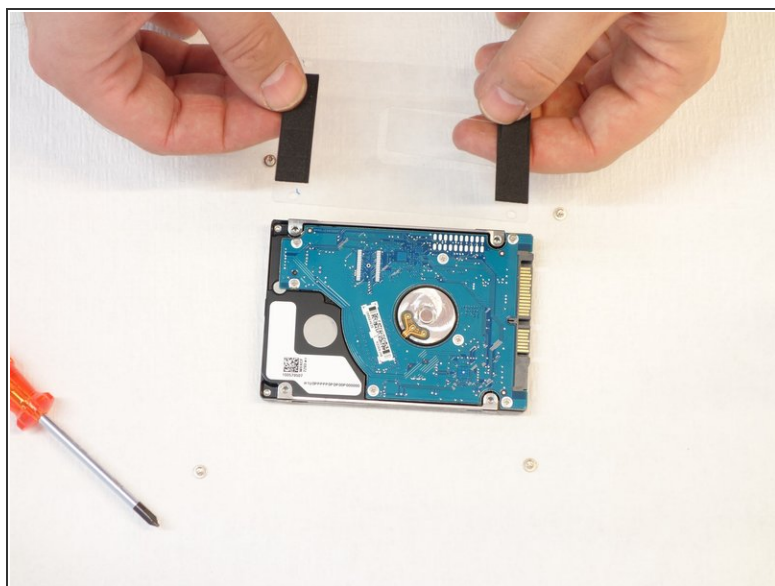
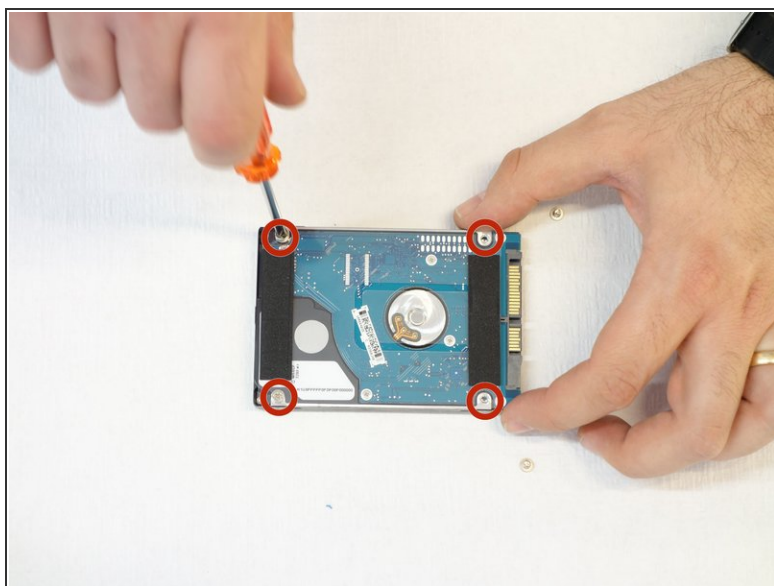
- Turn off the computer.
- ⓘ Before each operation it is important to start with the removal of the accumulator.
- Take the slide unlocked into position, remove the battery.

## Step 2 — hard disk



- Using the Phillips # 1 screwdriver, remove the hard drive cover.
- Grasp the transparent tab to separate the hardtop from the SATA connector.

## Step 3



- Using the Phillips # 1 screwdriver, unscrew the four screws securing the plastic cover.
- This cover is then reinstalled on the new hard drive.

For reassembly, follow the instructions in reverse order.