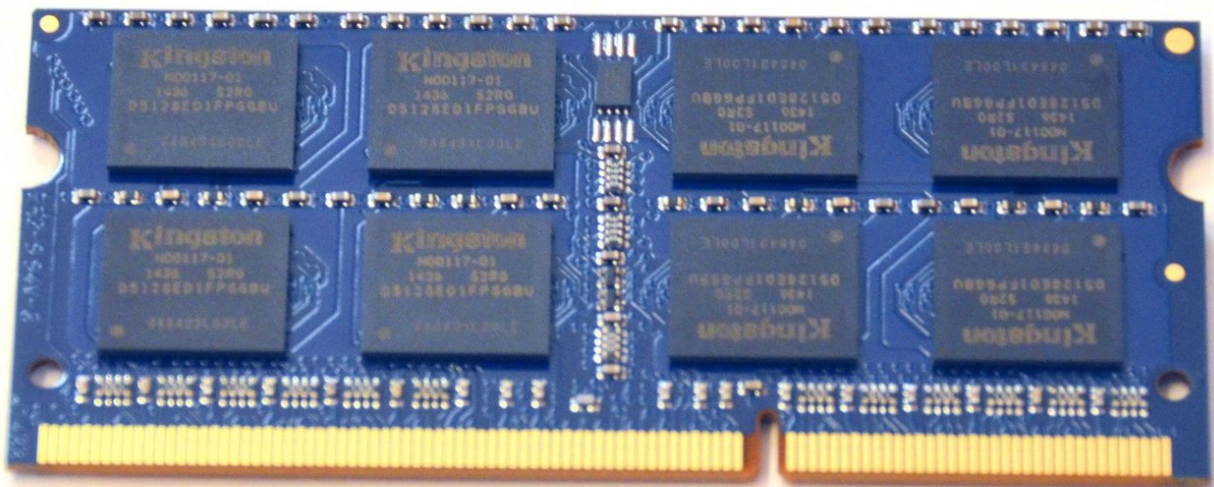




Replace or expand RAM memory

Written By: Felice Suglia





TOOLS:

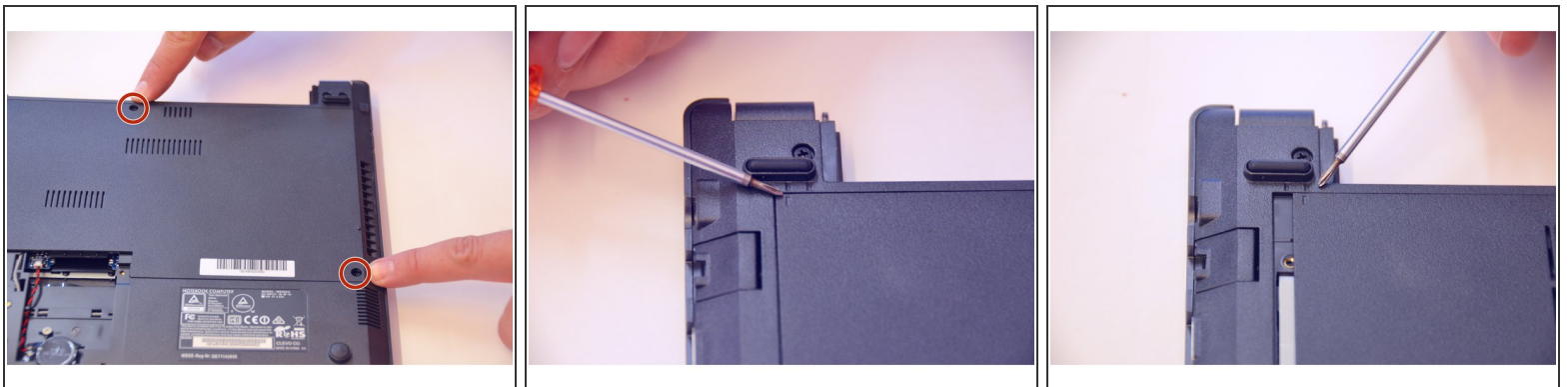
- [Phillips #0 Screwdriver](#) (1)
-

Step 1 — Battery



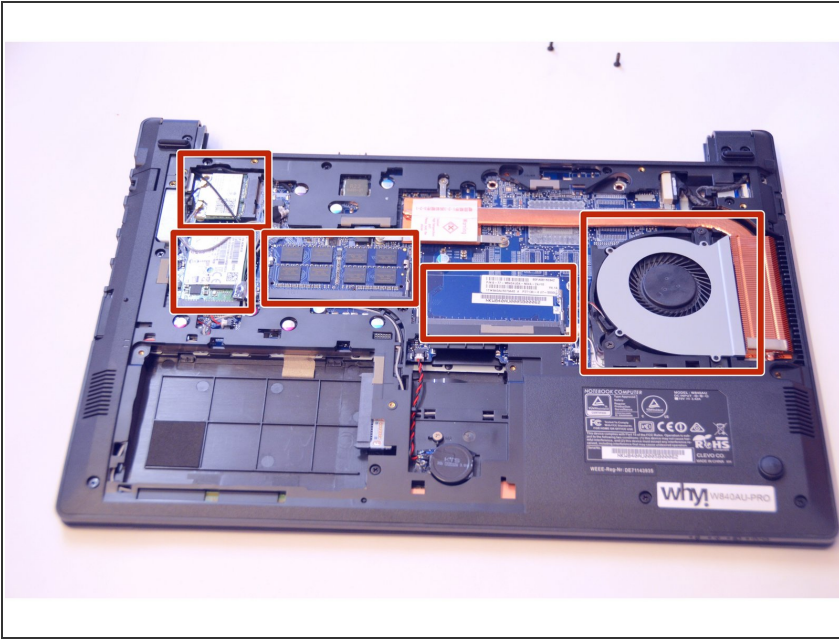
- Open the latch on the right side that secures the battery in place.
- Open the latch on the left side that secures the battery in place.
- Now remove the battery.

Step 2 — Main access cover



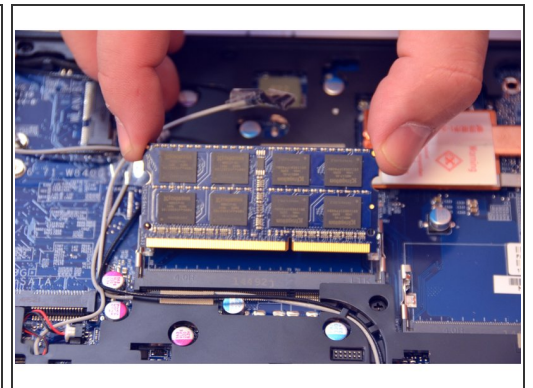
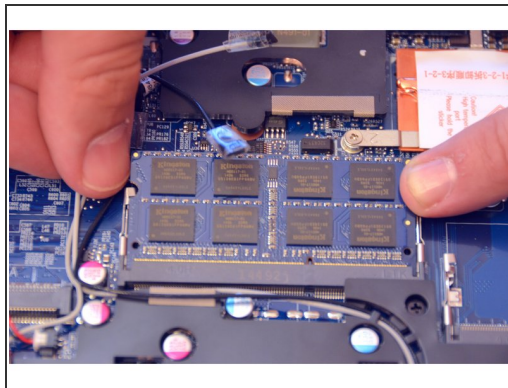
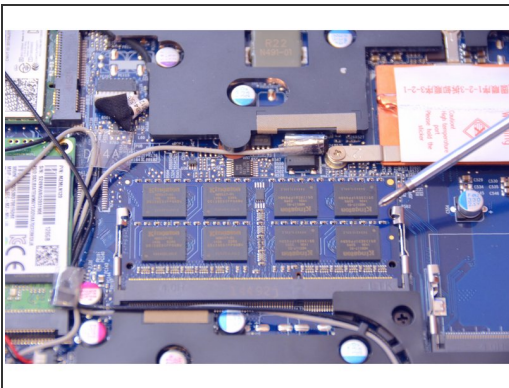
- Using a Philips-head screwdriver remove highlighted screws.
- Look at the marking to see how to remove the access cover.
- Remove the access cover as shown by the marker.

Step 3



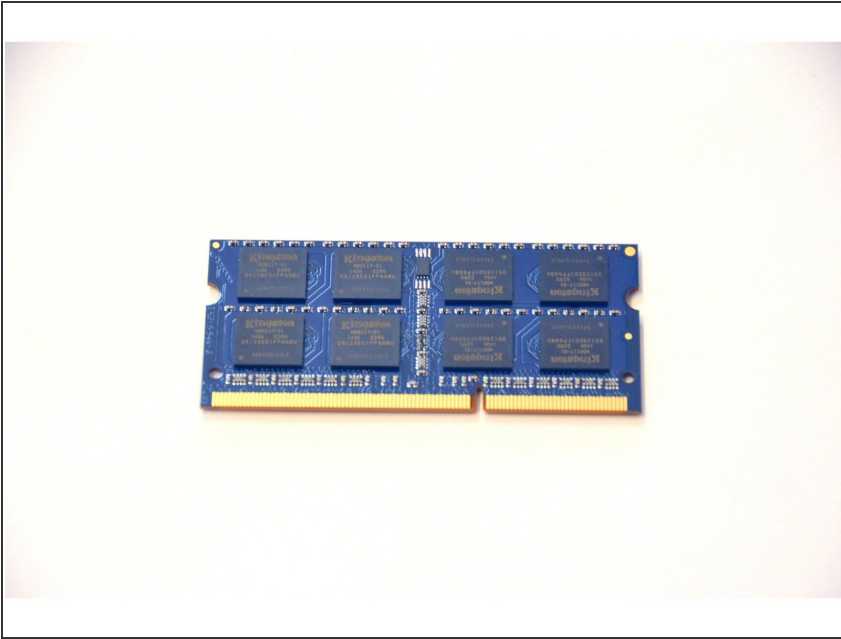
- You now have access to all components of this laptop.

Step 4 — RAM memory



- Here is the default installed memory module.
- Locate and squeeze the tension springs that secure the memory module apart.
- Pull the memory module (RAM) out of its plug.

Step 5



- This is what the remote memory module looks like.

To assemble the device again, proceed in reverse order.