



# Replace the filters on the Philips PowerPro Active 2000W FC8670 vacuum cleaner

How to replace the motor protection filter and exhaust filter on the Philips PowerPro Active 2000W vacuum, model number FC8670.

Written By: Amy Justice



## INTRODUCTION

This guide will show you how to replace the motor protection filter and exhaust filter on the Philips PowerPro Active 2000W vacuum cleaner, model number FC8670. This can be done by hand and requires the Philips PowerPro Active/PowerPro Compact Replacement kit FC8058/01.

It is recommended that these filters are replaced annually. During these 12 months, monthly cleaning is recommended to ensure the filters are working optimally.

---

### TOOLS:

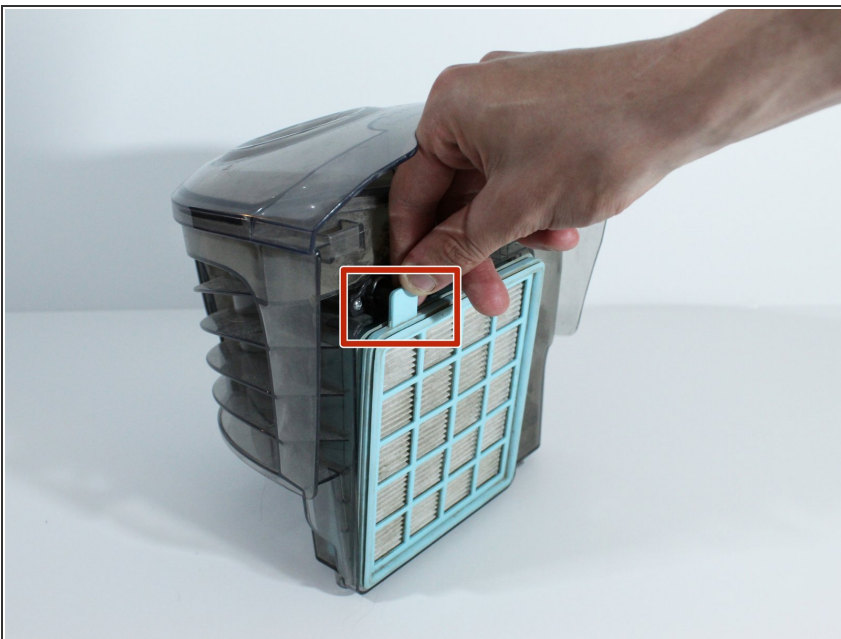
- [Dust mask \(if preferred\)](#) (1)
  - [Old Toothbrush](#) (1)
-

## Step 1 — Filters



- Press the Eject button on top of the vacuum cleaner to remove the dust drum.
- Pull the drum upwards using the handle. This will give you access to the motor protection filter.

## Step 2



- Remove the filter from the back of the drum by pulling on the blue tab at the top of the filter.

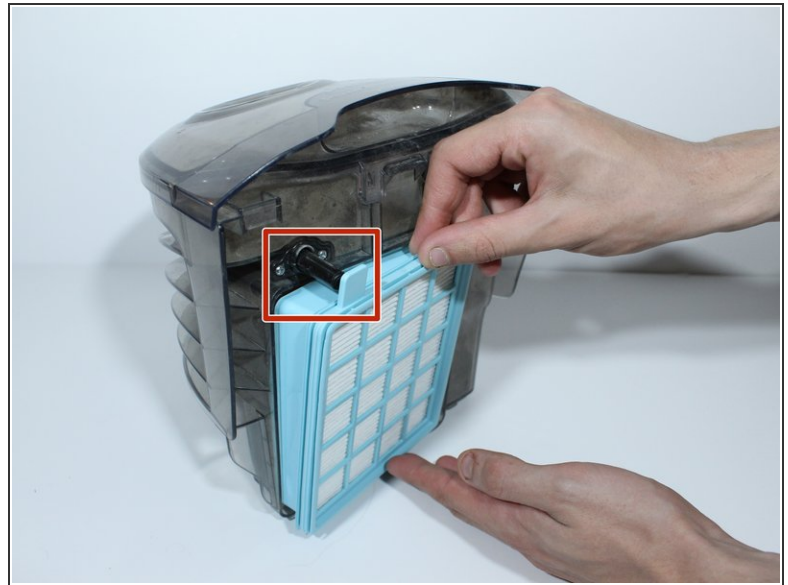
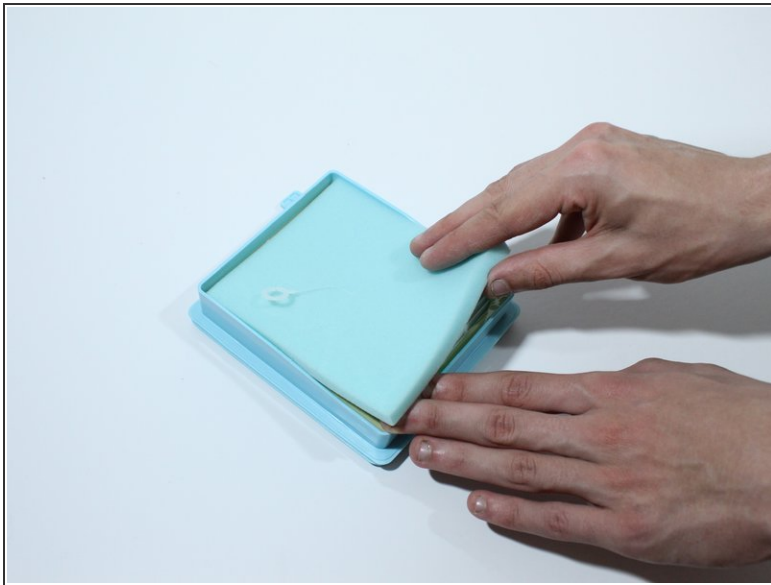


## Step 3



- i** If your filter is less than 12 months old, it usually just needs a clean to ensure it is filtering correctly again.
- Use an old, dry toothbrush to remove dust from the pleated side of the filter.
  - Wash the sponge piece in the filter in water to remove dirt. Rinse and squeeze the sponge until the water runs clear.
  - Leave the sponge to completely dry before reinserting. This can take up to 2 hours.
- !** It is extremely important that the sponge is completely dry before you reinsert it into the vacuum cleaner. Placing the wet sponge in the vacuum cleaner is an electrical hazard.

## Step 4



- Return the dry sponge to the backside of the motor protection filter.
- If you are replacing the filter entirely, remove it from the box and place it on the back of the dust drum.
- Ensure that the blue tab is aligned with the bar that protrudes from the back of the dust drum to fit the filter correctly.

## Step 5



- Check that the motor protection filter is fitted correctly to the back of the drum.
- Return the dust drum to the vacuum cleaner.
- ⓘ Replacing the drum at an angle (as seen in image 2) can prevent damage to the tabs that hold the drum in place.
- Press down on the top of the drum to ensure it clicks into place.

## Step 6



- Pull down on the tab at the back of the vacuum cleaner to give you access to the exhaust filter.
- Pull the grill away from the vacuum and remove the exhaust filter.

## Step 7



- Pick away any large pieces of debris from the filter using your hands. You can then return it to the exhaust filter grill.
- If replacing with a new filter, remove the new filter from the box and place it over the exhaust filter.
- Return the grill to the back of the vacuum cleaner, while making sure that the filter is aligned correctly. Press the grill up until it clicks and is held in place.