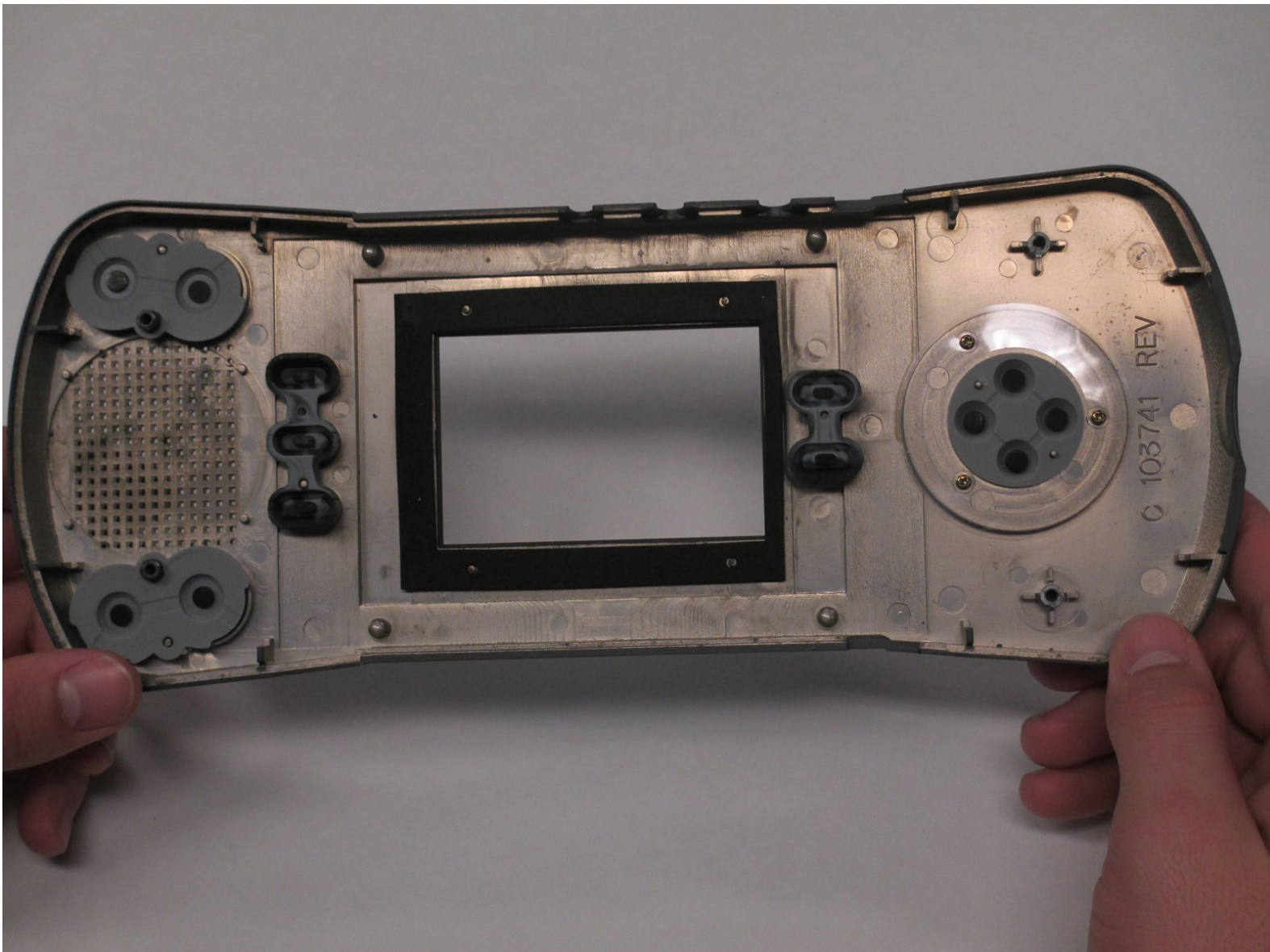




Replacing Atari Lynx Buttons and D-Pad

This guide will show how to replace worn down or broken buttons.

Written By: Tyler Williams



INTRODUCTION

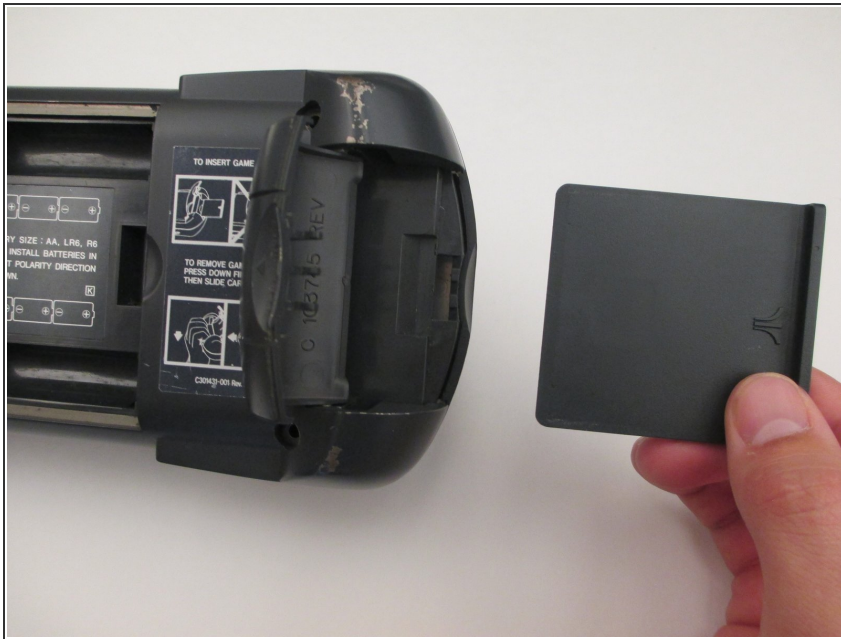
This guide will take you step-by-step on how to replace your buttons.



TOOLS:

- [Phillips #1 Screwdriver](#) (1)
 - [Phillips #0 Screwdriver](#) (1)
-

Step 1 — Atari Lynx



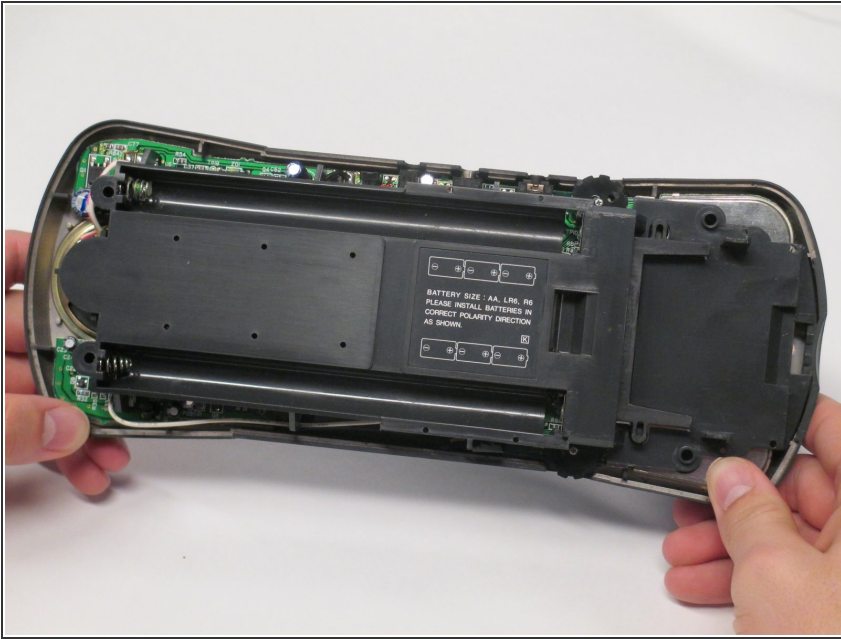
- Before disassembling your Atari Lynx, be sure the device is powered off.
- Remove any game in the console by opening the right latch and sliding the game to the right.

Step 2



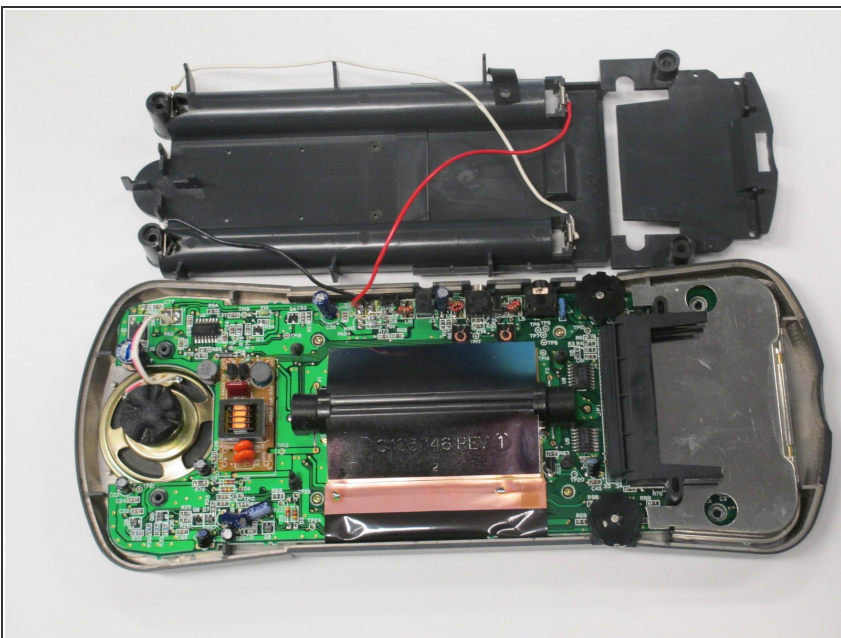
- Remove the four 35 mm Phillips #1 screws at each corner of the backside on the Atari Lynx.
- Pinch the rear panel with your fingers and lift away from the Atari.

Step 3



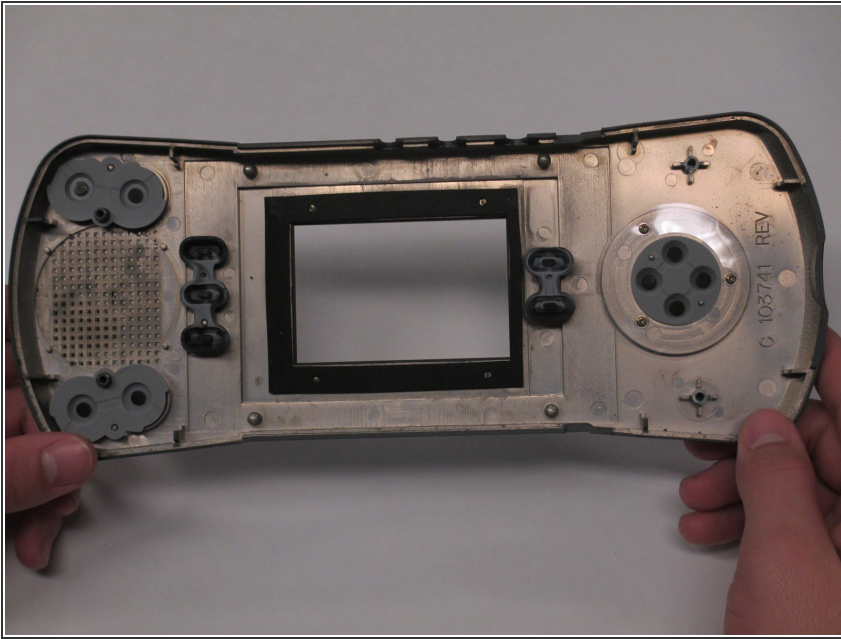
- Remove the battery panel by pinching the sides with your fingers and lifting it away from the Atari.
- ⚠ Be sure not to tear any wires attached to battery panel.

Step 4



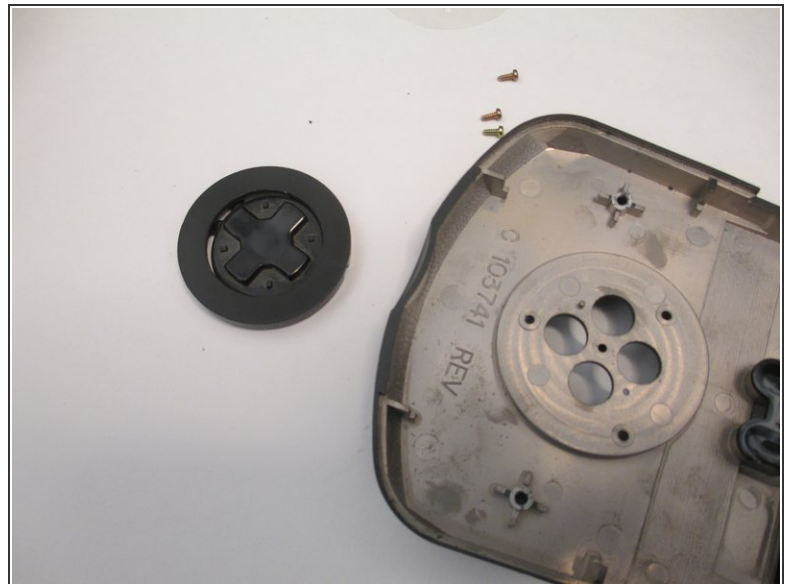
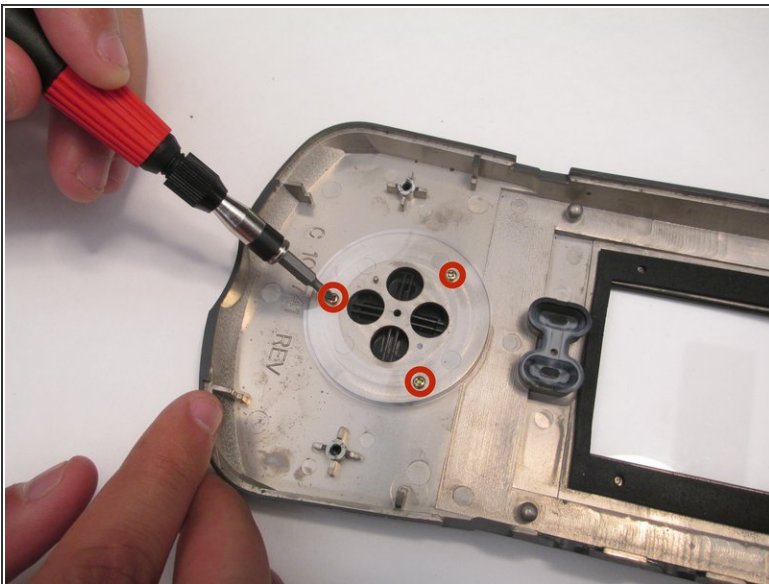
- Remove the control panel by pinching the sides with your fingers and lifting it away from the Atari.
- ⚠ Be sure not to tear the speaker wire while removing the control panel.

Step 5 — Buttons and D-Pad



- If you want to replace the buttons other than the D-pad, you can pull them up by pinching the sides with your fingers and lifting away from front panel of Atari.

Step 6



- To remove the D-Pad, remove three 10 mm Phillips #0 screws surrounding the D-Pad.
- The buttons should fall out once the screws have been removed.

To reassemble your device, follow these instructions in reverse order.