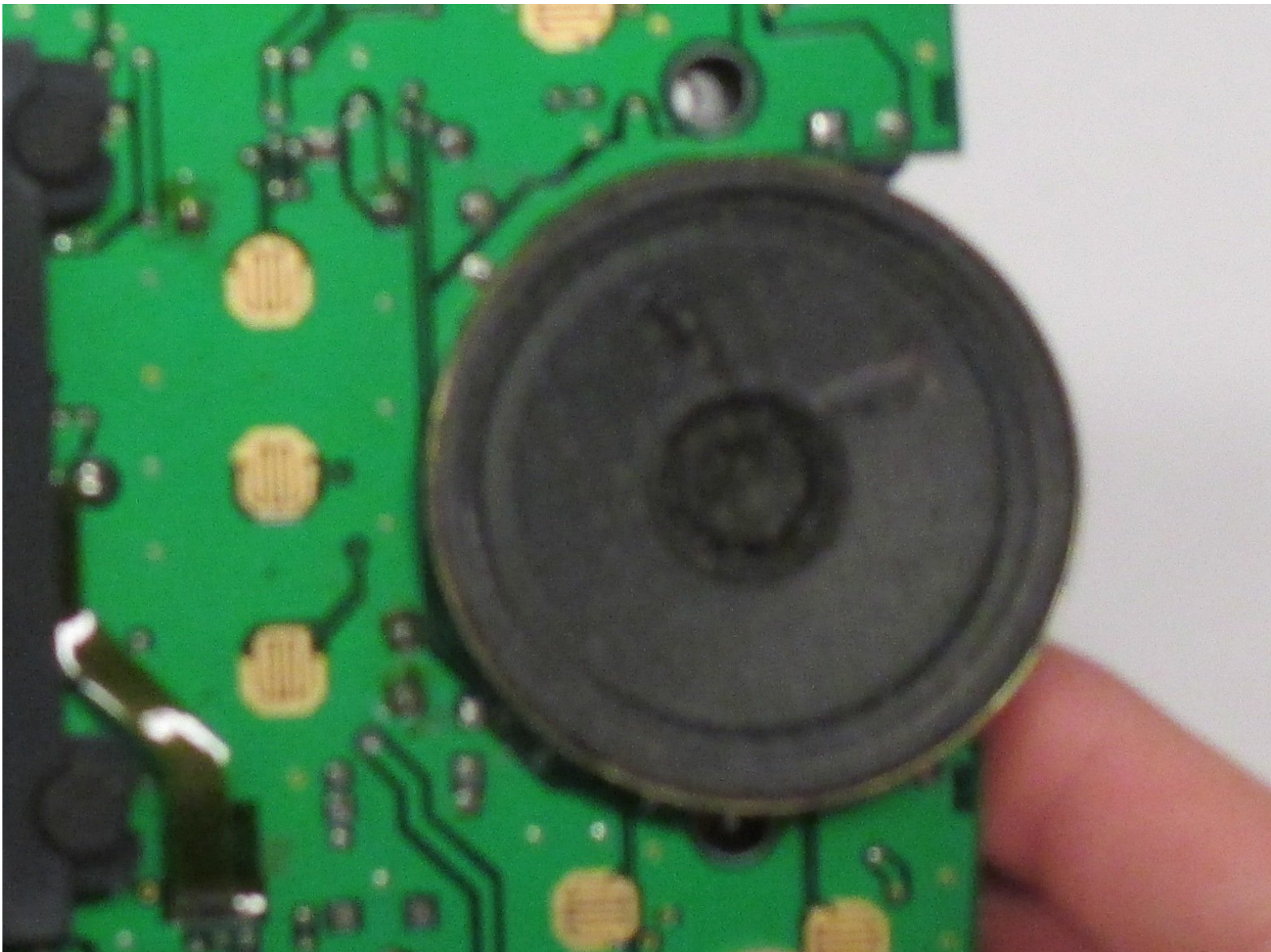




Replacing Atari Lynx Speaker

In a few short steps you will be able to replace the speaker on your Atari Lynx.

Written By: Tyler Williams



INTRODUCTION

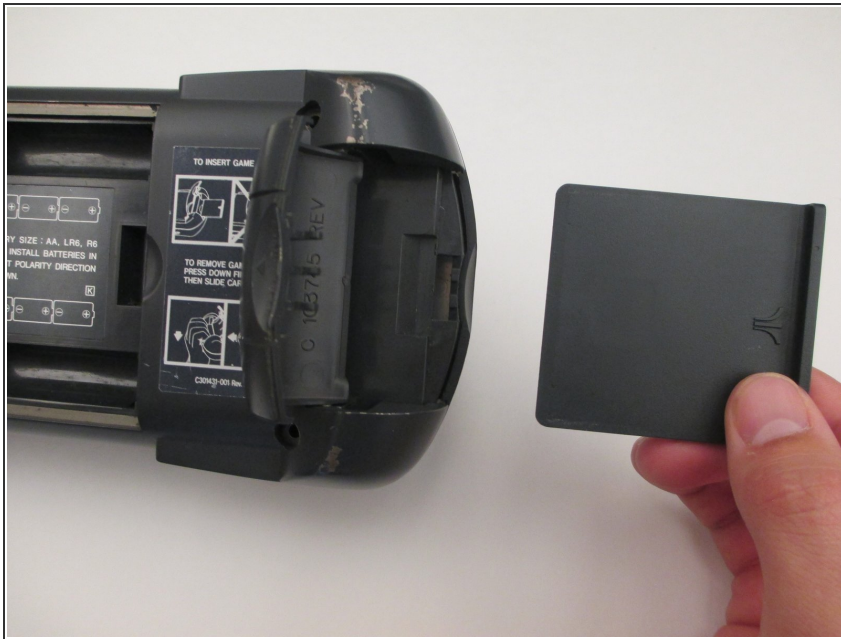
This guide will show you how to replace the speaker from your Atari Lynx. Before beginning, it is a must to know how to solder and desolder. In order to find out how to do these processes there will be a link in the the following steps. Aside from soldering, most steps should be easy to follow and simple.



TOOLS:

- [Soldering Iron](#) (1)
 - [Solder](#) (1)
 - [Phillips #1 Screwdriver](#) (1)
-

Step 1 — Atari Lynx



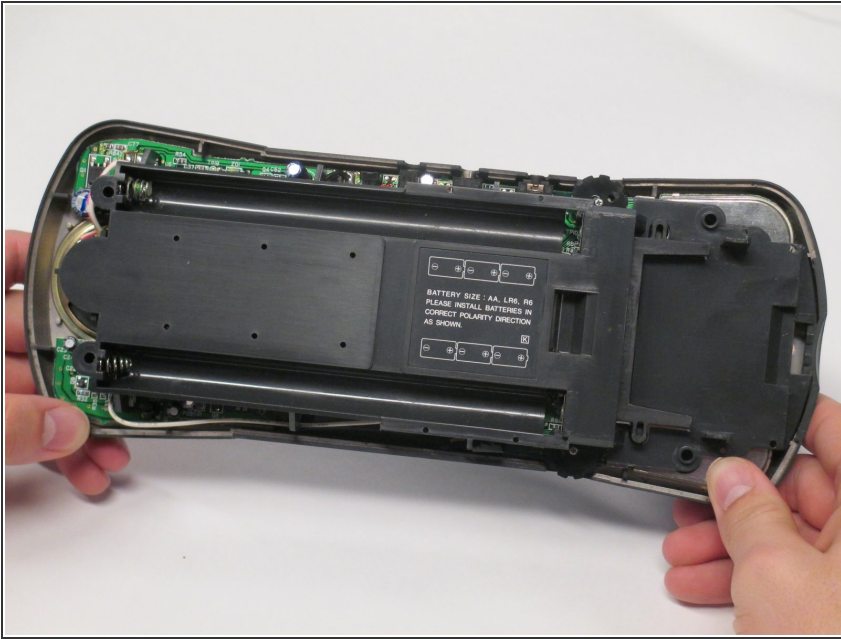
- Before disassembling your Atari Lynx, be sure the device is powered off.
- Remove any game in the console by opening the right latch and sliding the game to the right.

Step 2



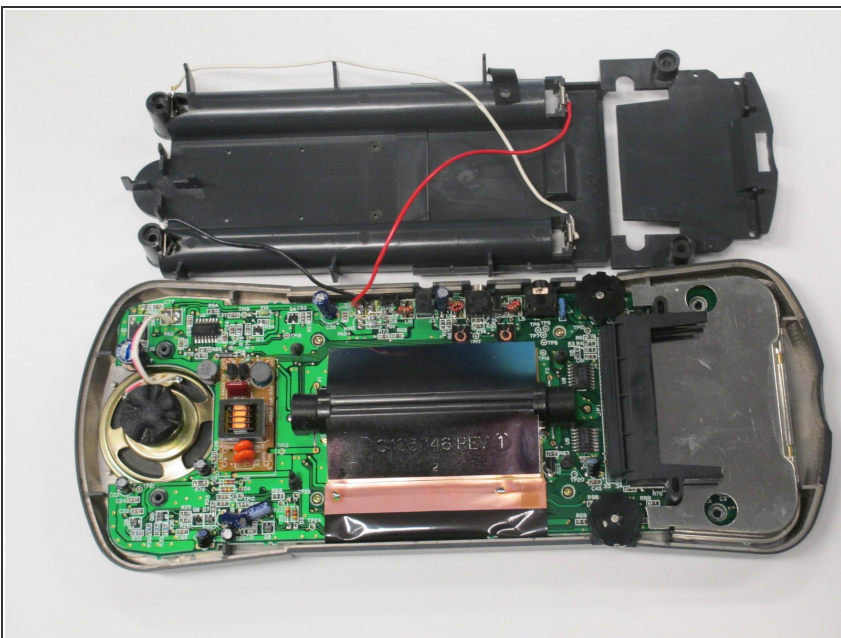
- Remove the four 35 mm Phillips #1 screws at each corner of the backside on the Atari Lynx.
- Pinch the rear panel with your fingers and lift away from the Atari.

Step 3



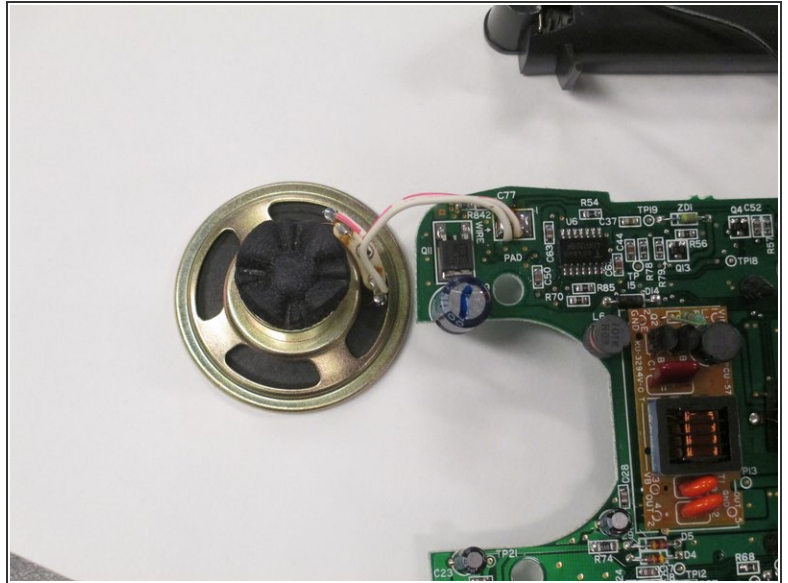
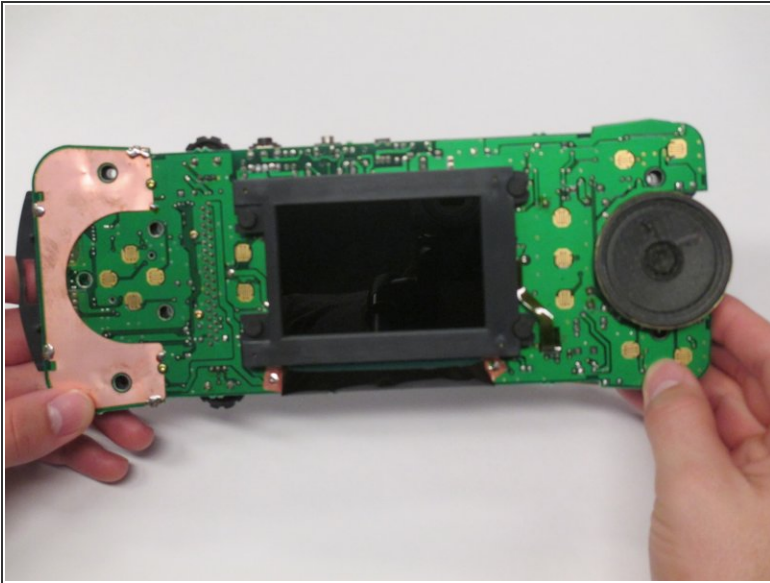
- Remove the battery panel by pinching the sides with your fingers and lifting it away from the Atari.
- ⚠ Be sure not to tear any wires attached to battery panel.

Step 4



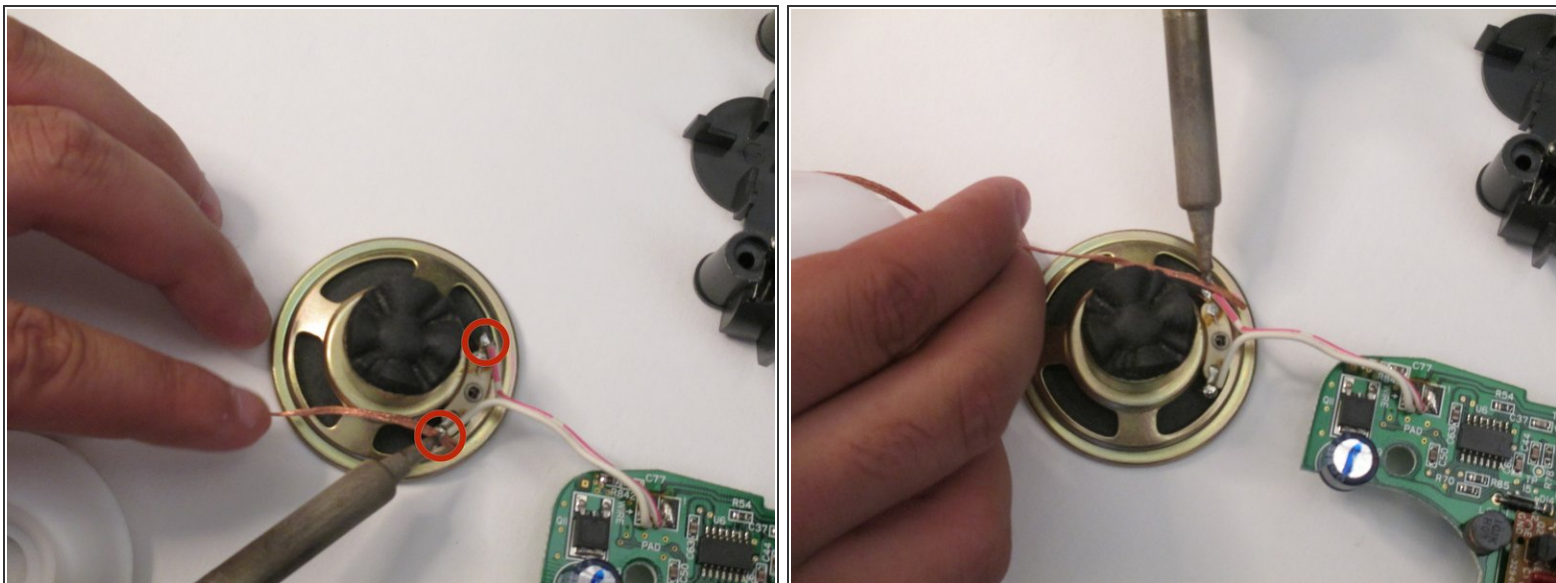
- Remove the control panel by pinching the sides with your fingers and lifting it away from the Atari.
- ⚠ Be sure not to tear the speaker wire while removing the control panel.

Step 5 — Speaker



- Remove the logic board from the console.
- Flip the logic board so the screen is facing down.

Step 6



- Now you will need to desolder both of the wires connected to the speaker.
- If you are having trouble desoldering, click [here](#).
- Finally solder the new speaker back on and follow the previous steps in reverse order.

To reassemble your device, follow these instructions in reverse order.