



Replacing BenQ MP512ST Projector Central Fan

This guide shows a fast and easy way to replace the central fan in a BenQ MP512ST Projector.

Written By: Dante Mazzanti



INTRODUCTION

Follow the steps in this guide to replace your broken central fan in your projector.



TOOLS:

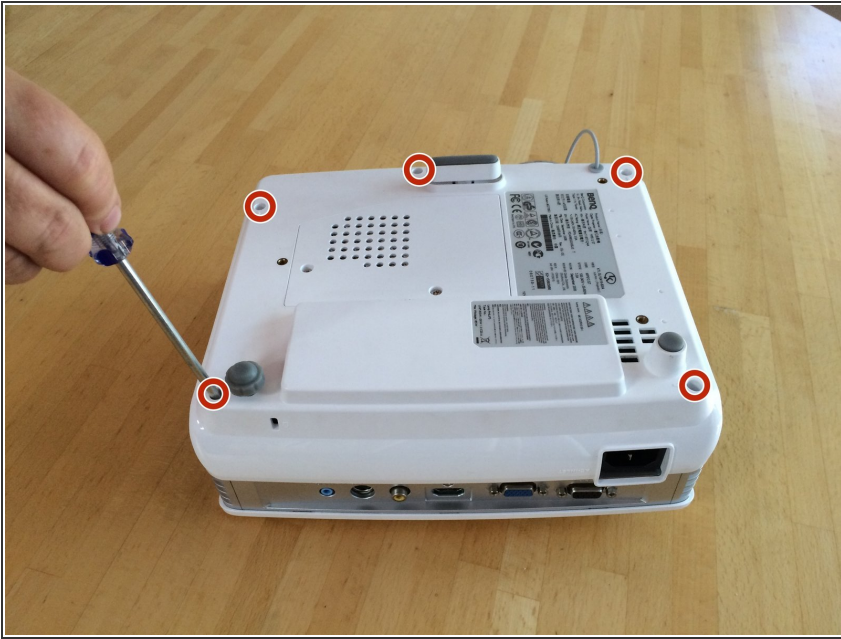
- [Phillips #2 Screwdriver](#) (1)
- [Flathead Screwdriver](#) (1)




PARTS:

- [MP512ST Projector Replacement Central Fan](#) (1)

Step 1 — Central Fan



 Be certain that the projector is powered off before beginning disassembly.

- Remove the five Phillips screws on the bottom of the projector.

Step 2



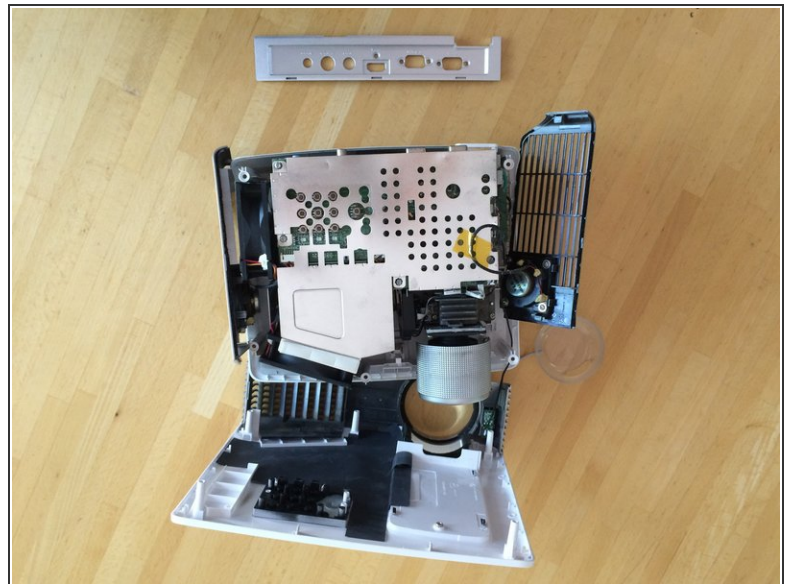
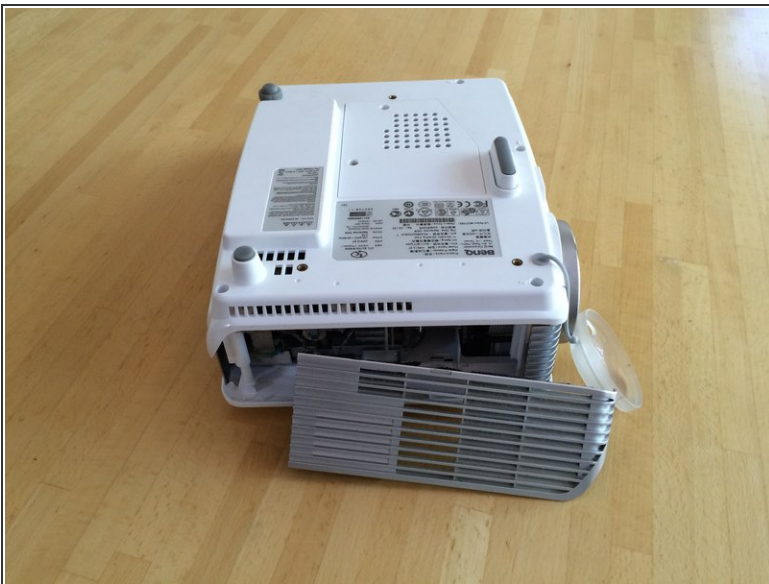
- Remove the Phillips screw on the back of the projector.

Step 3



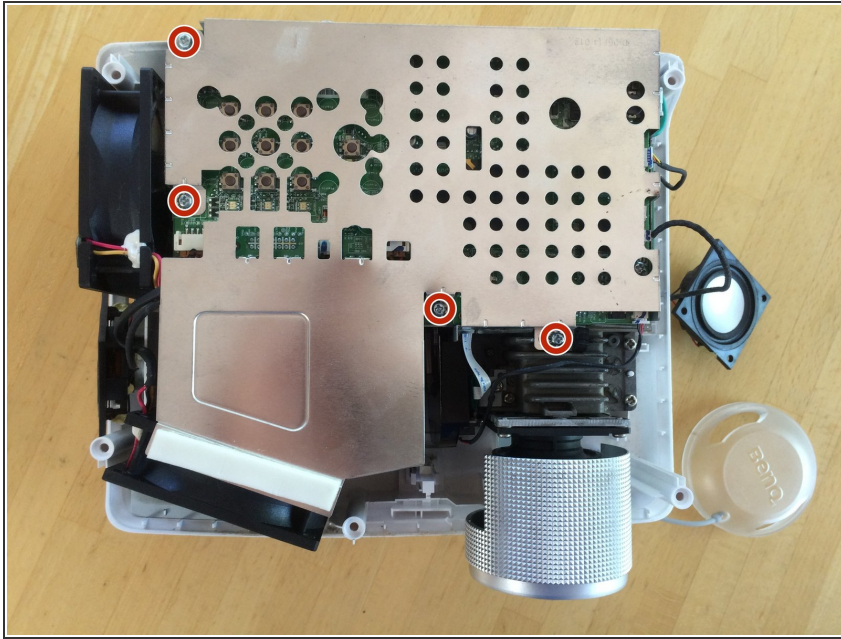
- Remove the four lock screws.
- ⓘ You may need to use pliers at first if the lock screws are too hard to twist with your fingers.

Step 4



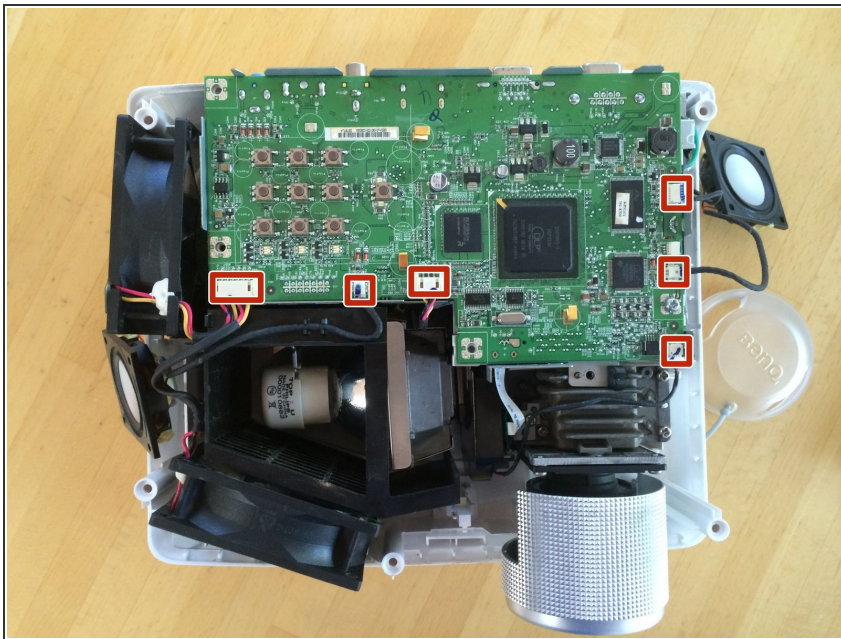
- Pry the sides of the case off using your fingers.
- ⚠ Do not pull too hard on the sides because you may break the speaker wires attached to them.
- Pop the tabs connecting the rest of the case together by running your fingers underneath the edges.

Step 5



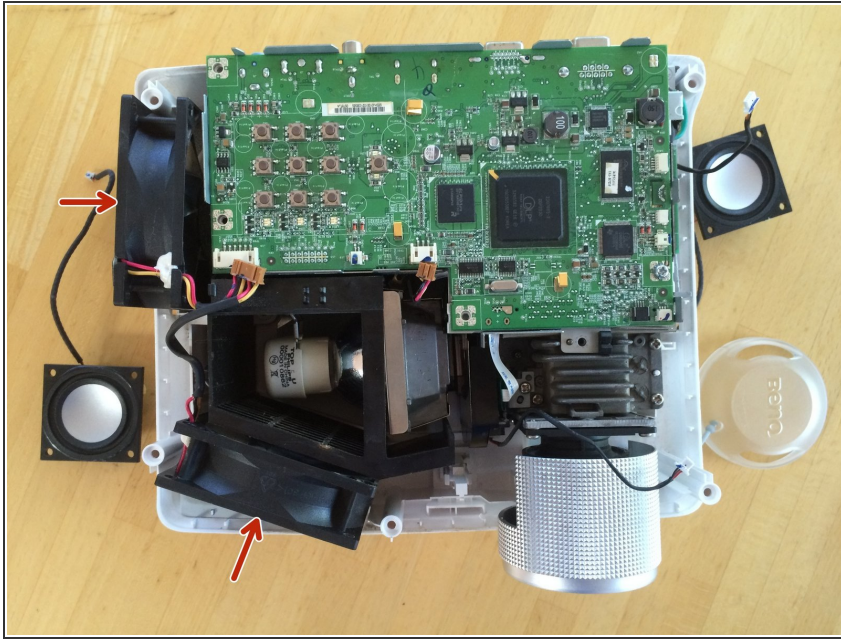
- Remove the metal plate covering the circuit board by removing the four Phillips screws.

Step 6



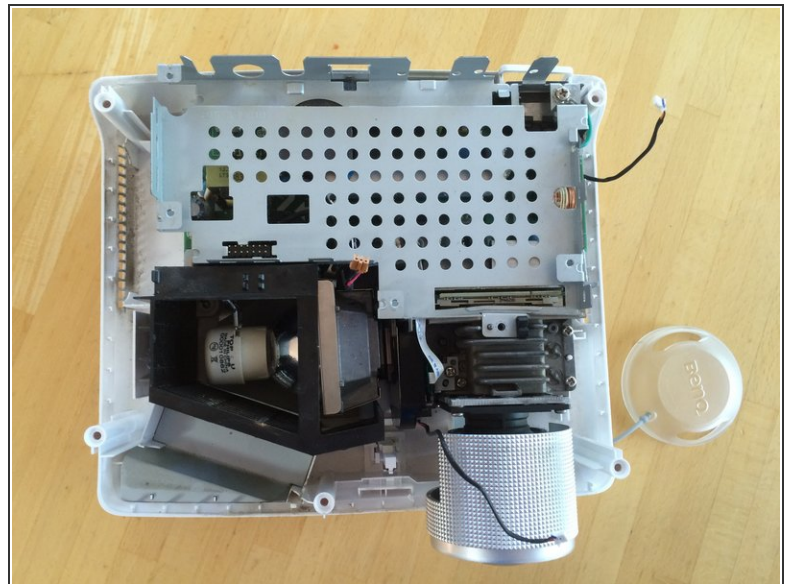
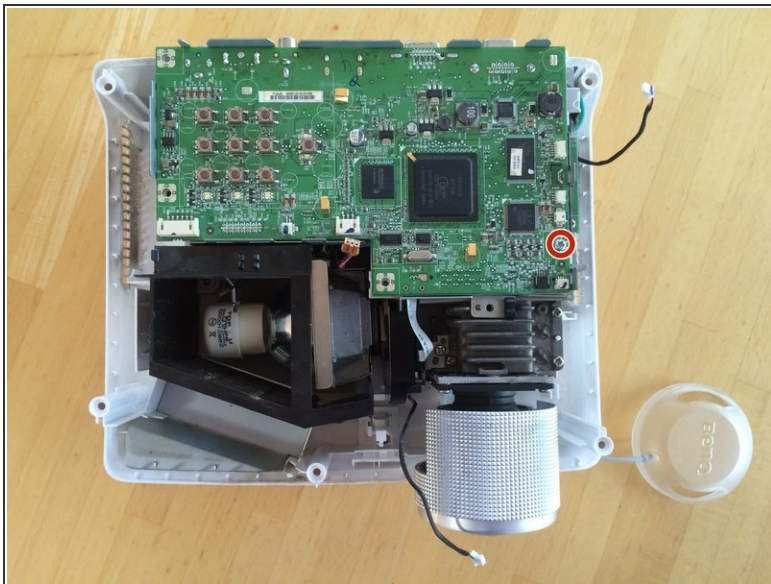
- Unplug the six cables by gently pulling up on the cable's connector.
- ⚠ Avoid pulling on the connector attached to the board as you may accidentally tear it off.

Step 7



- Remove the two fans.

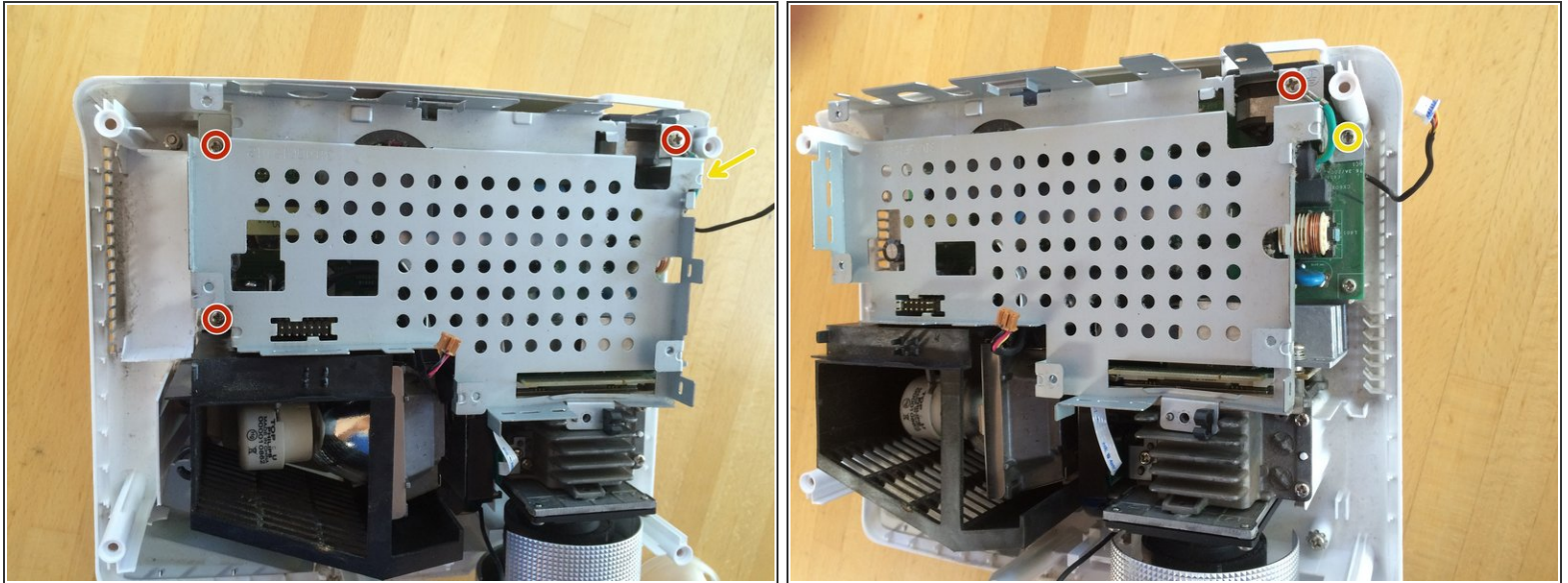
Step 8



- Remove the single Phillips screw on the circuit board.
- Gently pull up on the circuit board to remove it.
- ❗ The circuit board still has a few connections to other circuit board underneath it. Don't worry about these as they will disconnect as you lift up on the circuit board.

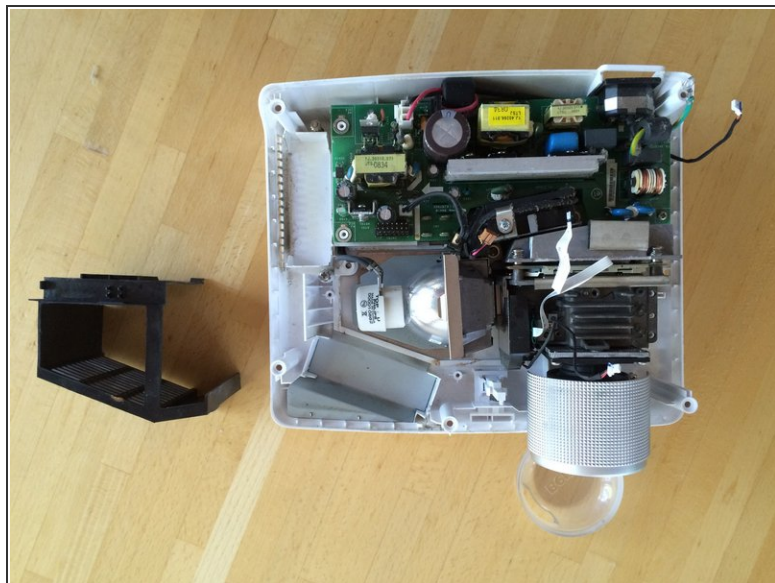
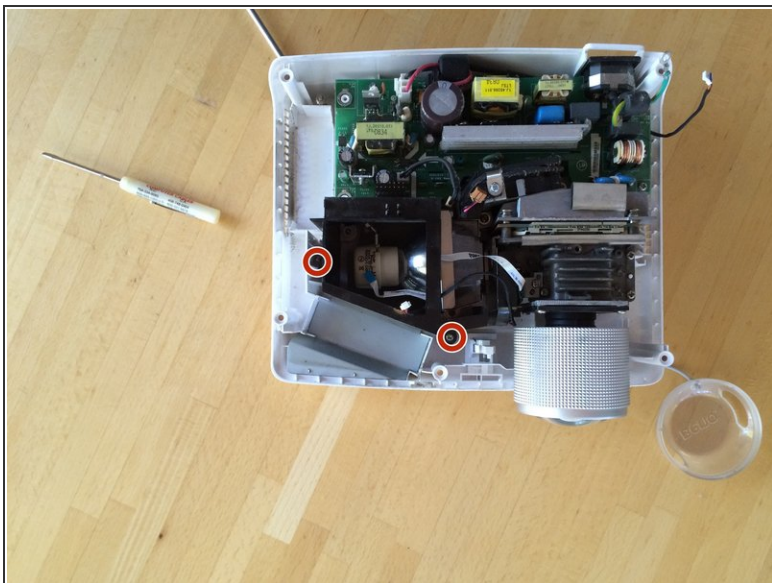
This document was generated on 2019-09-30 04:43:11 AM (MST).

Step 9



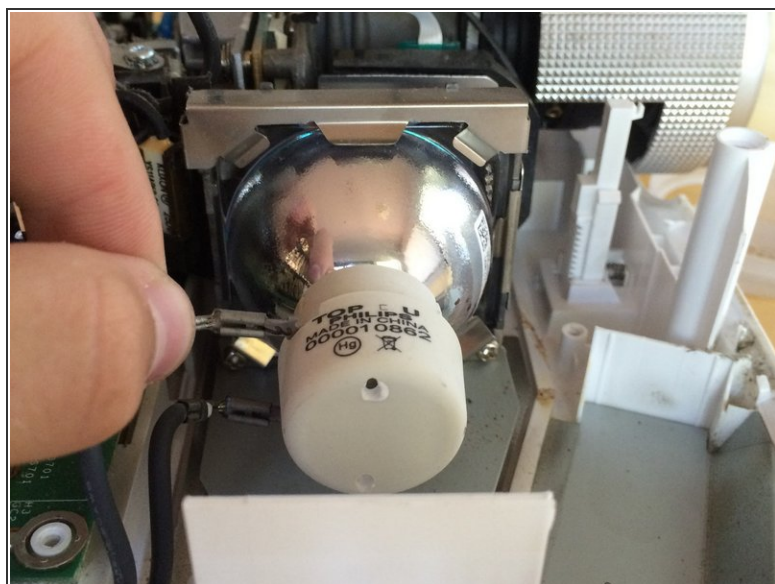
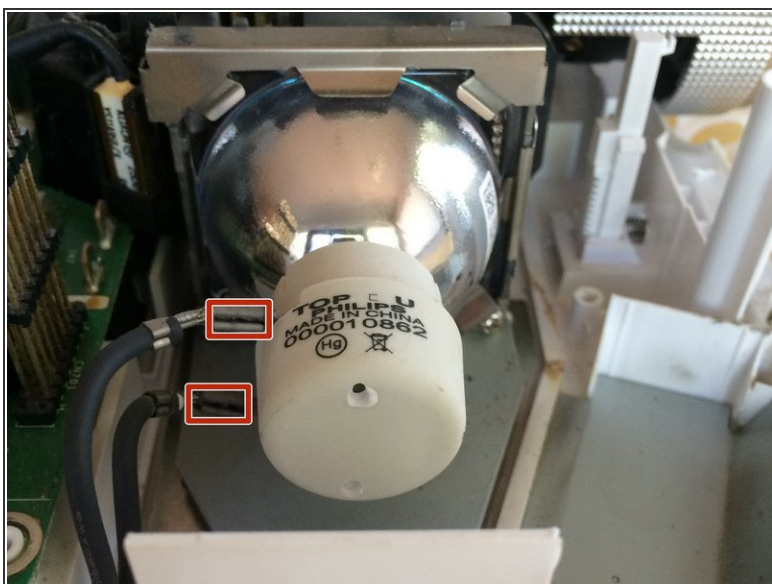
- Remove the four Phillips screws.
- The yellow arrow points to the location of the fourth screw which can be seen in the second picture.

Step 10



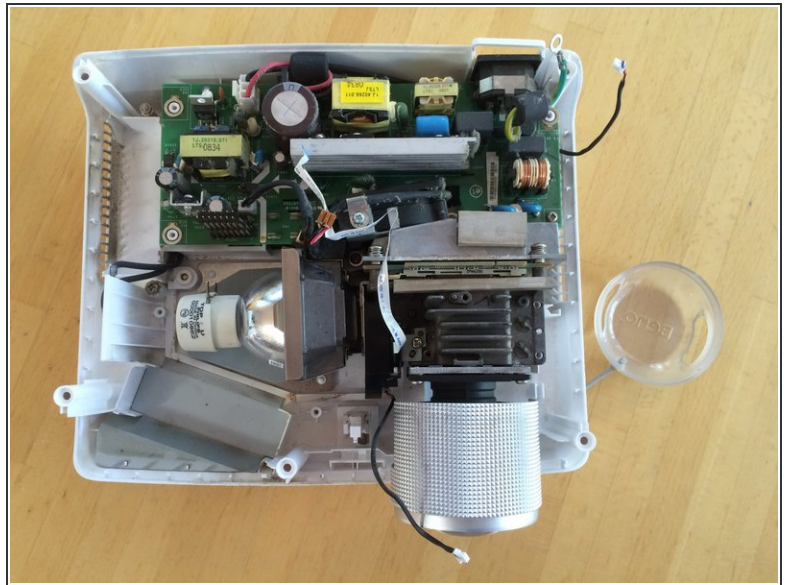
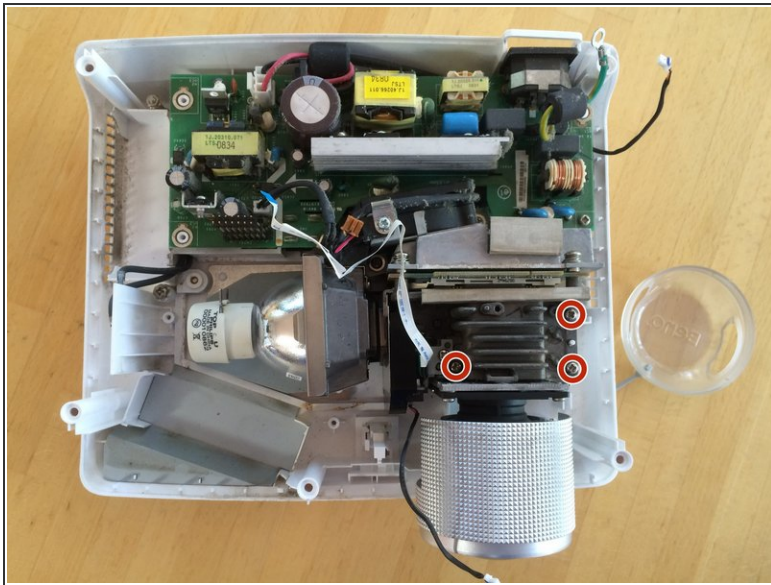
- Remove the two Phillips screws.
 - ❗ The screw on the left is between two tall pieces of plastic which can make it difficult to see.
- Lift the black plastic casing around the light bulb up out of the projector.

Step 11



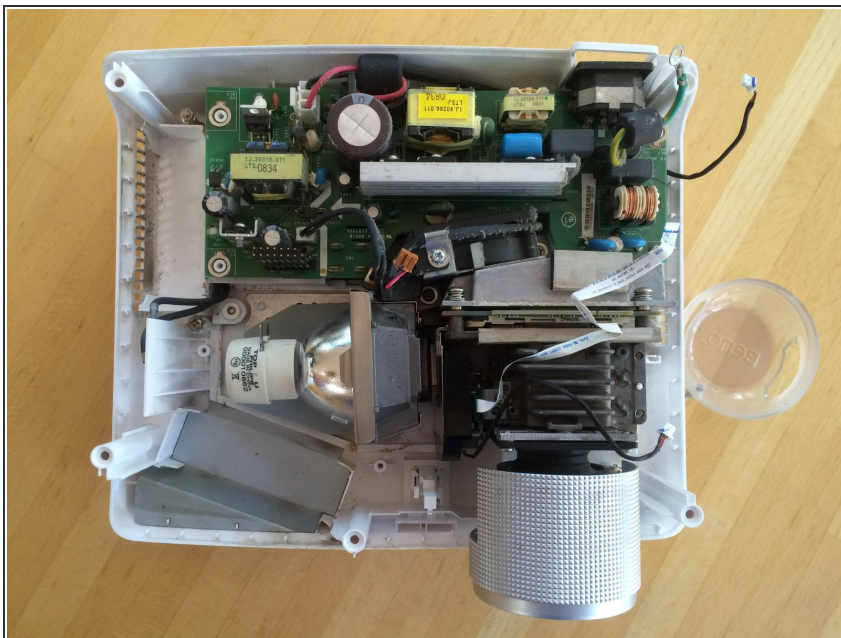
- Disconnect the power supply from the light bulb by gently pulling on the two metal tabs attached to it.

Step 12



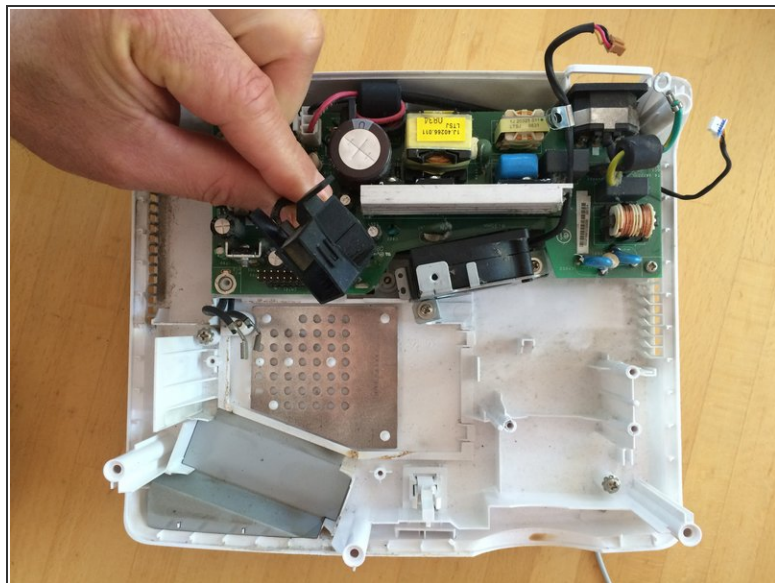
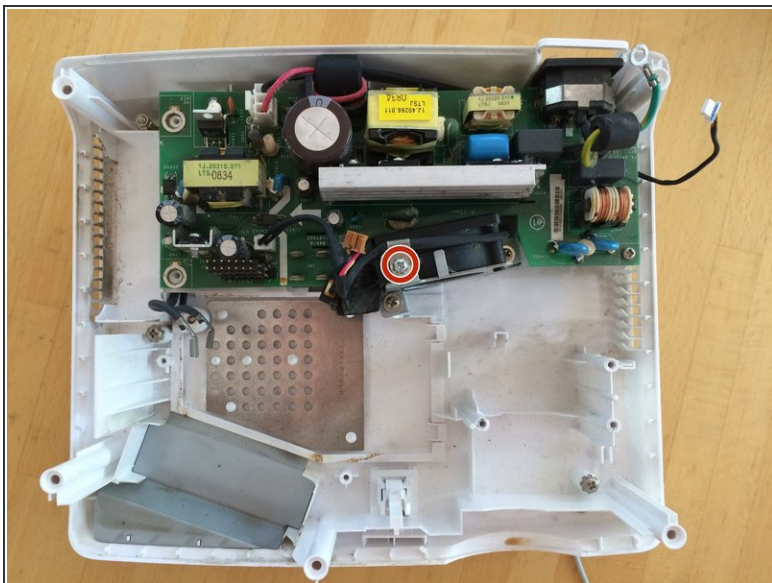
- Remove the three screws circled in red that are holding the heat sink to the bottom part of the case.

Step 13



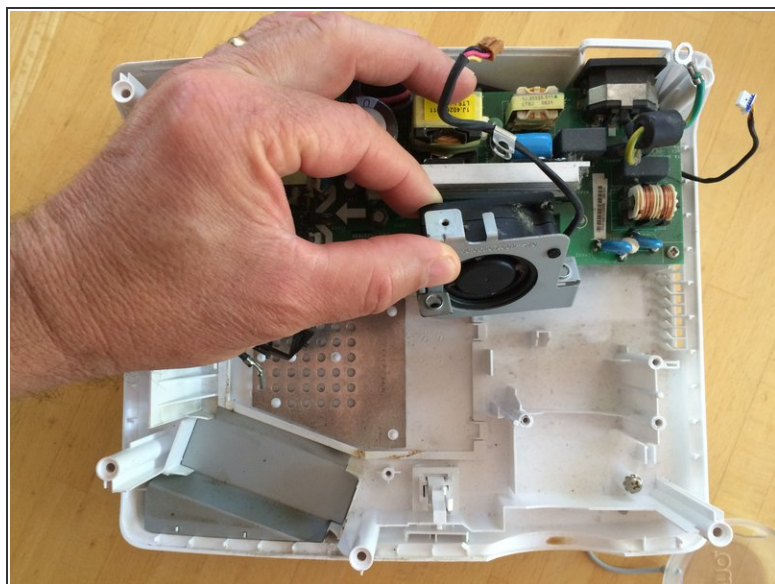
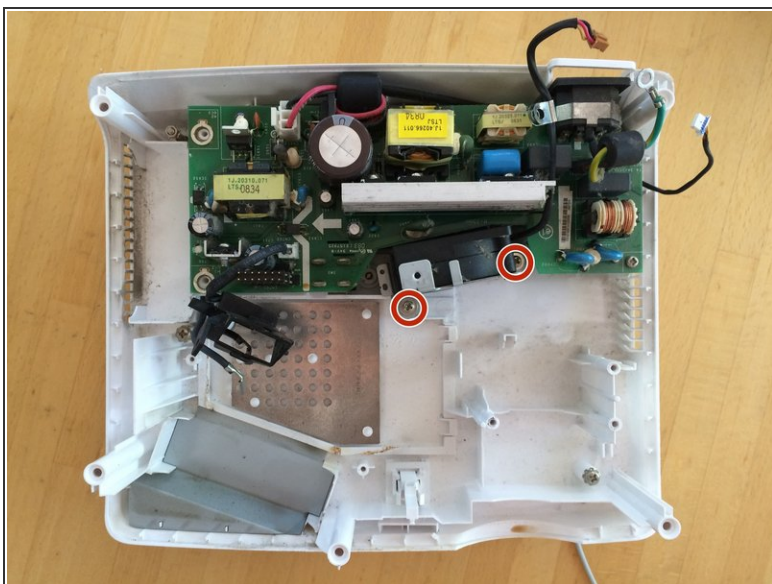
- Lift the lens/light bulb combo out of the case.
- ⓘ It is necessary to remove the lens/light bulb combo in order to have easy access to the central fan.

Step 14



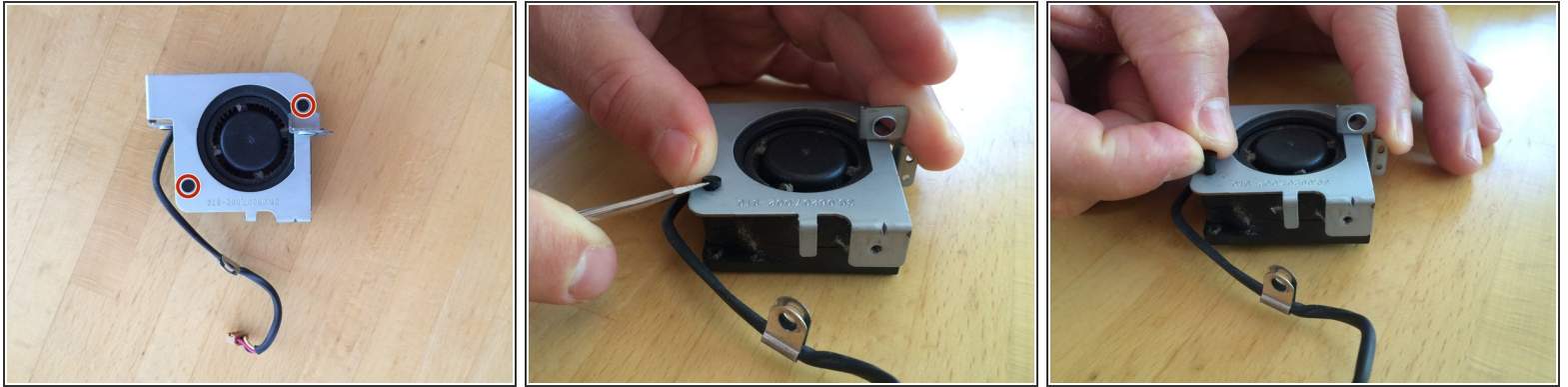
- Remove the Phillips screw.
- Slide the plastic piece on the left side of the fan out of its position.

Step 15



- Remove the two screws.
- Lift the fan out of the case.

Step 16



- Remove the two connectors holding the fan to the metal frame.
- Insert a flat head screw driver or other prying tool under the head of the connector and gently pry up.
- Insert the new fan in place of the old one.

To reassemble your device, follow these instructions in reverse order.