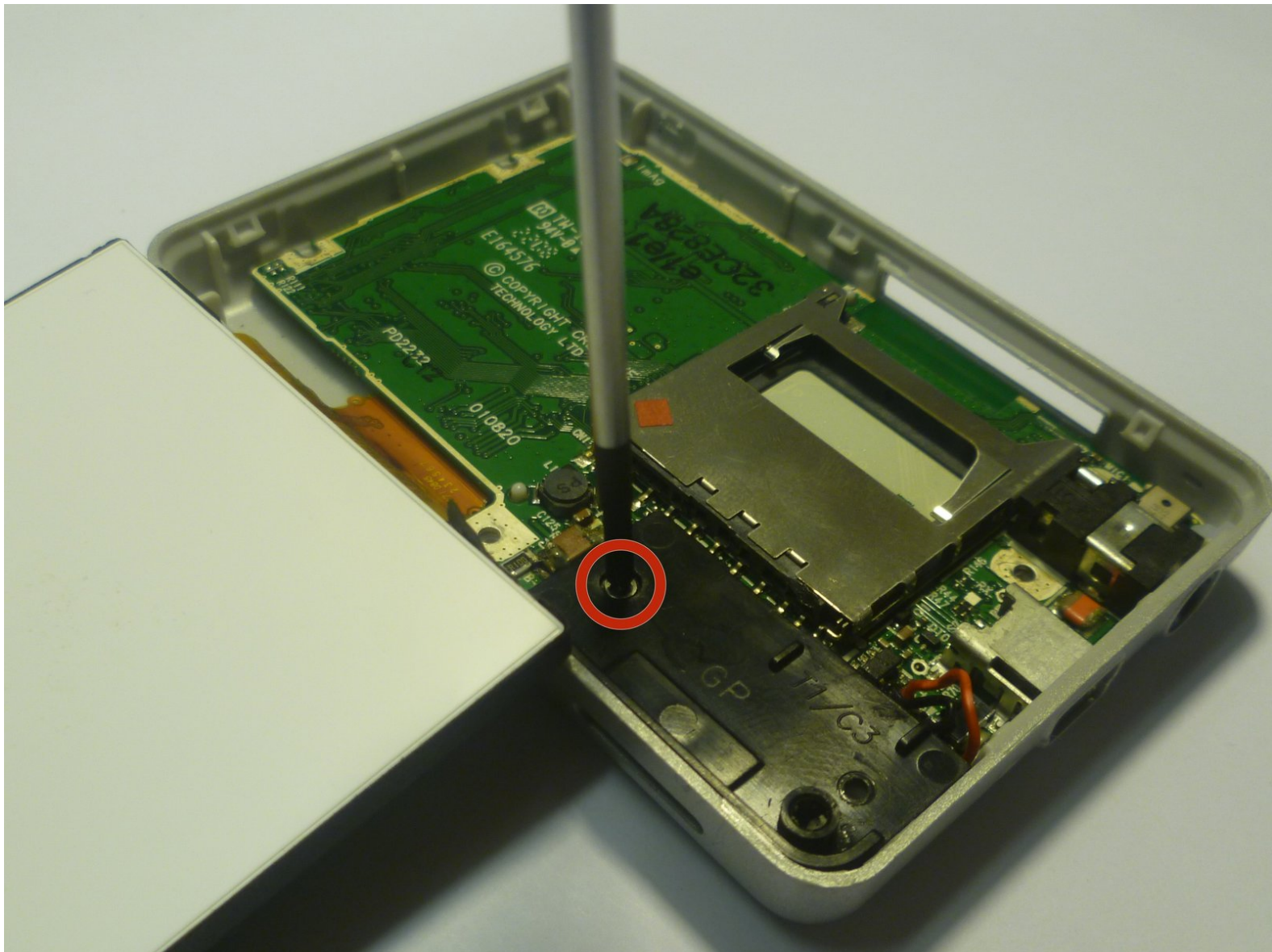




# Replacing Creative Zen X-Fi Speaker

Gain access to the speaker by unscrewing its cover and lifting it out of its slot with tweezers.

Written By: Westley Courchene



---

## INTRODUCTION

The speaker is an output component that plays sound.



### TOOLS:

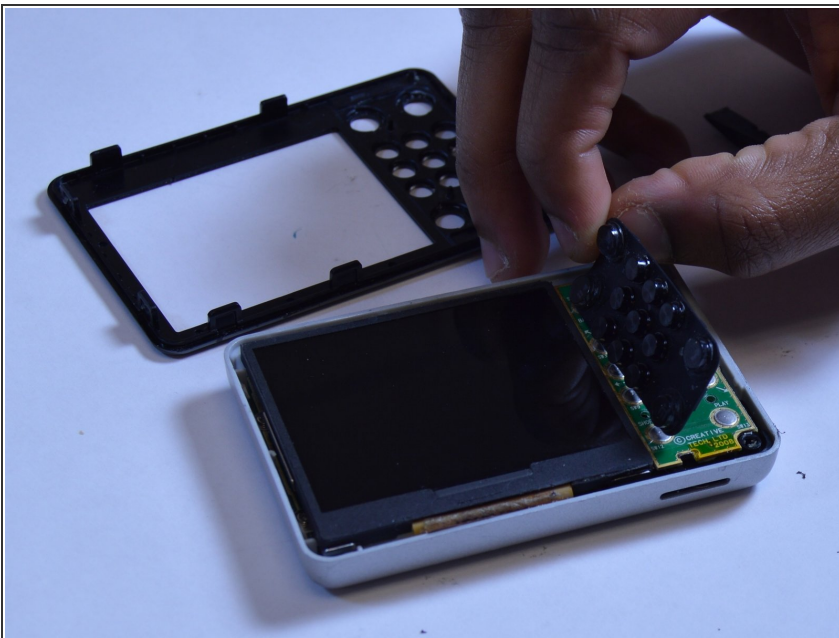
- [Phillips #00 Screwdriver](#) (1)
  - [Spudger](#) (1)
  - [Tweezers](#) (1)
-

## Step 1 — Detaching Front Case



- Using a spudger, wedge the tip between the front and back case to pry them apart.
- ⓘ Be careful to not apply excessive force since there are six fasteners on the screen's side that holds the cases firmly together.

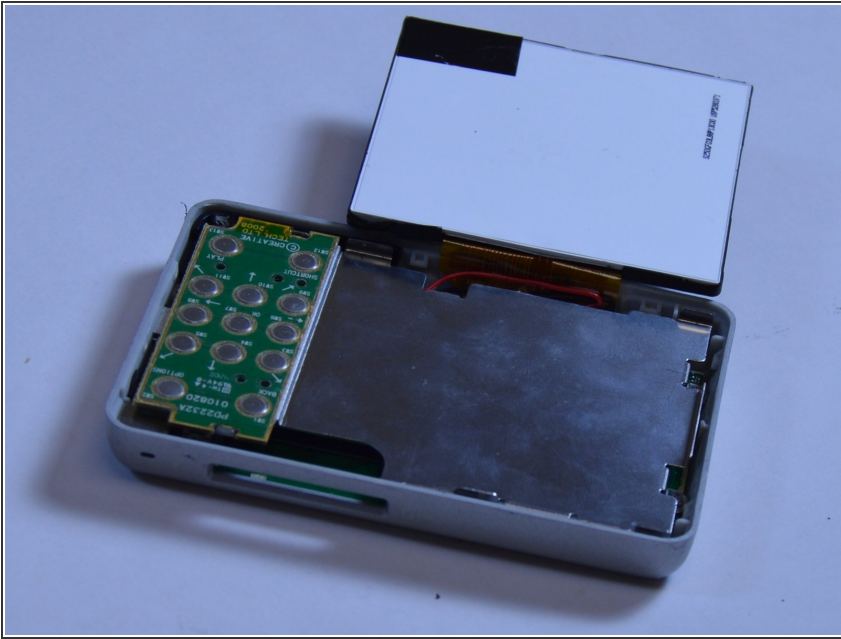
## Step 2 — Rubber Button Cover



- The black rubber button pad can be removed by simply picking it up.

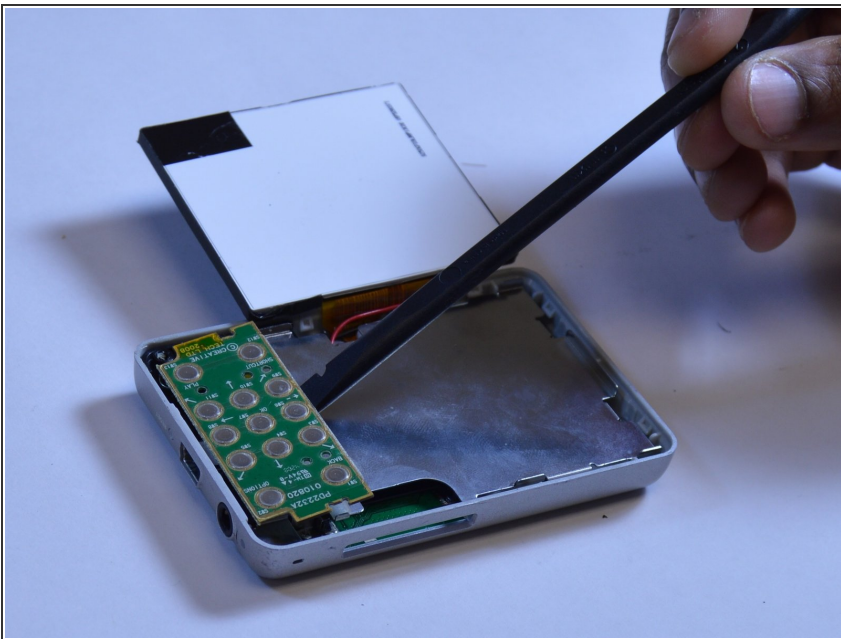


### Step 3 — Button Input Chip Part 1



- Flip the LCD screen off the midsection plate to gain access to the space around the input button chip.

### Step 4 — Button Input Chip



- Using a spudger, pry off the button input chip from the mid-section of the device. To gain best leverage,

start at the bottom right corner and level your way up the side of the chip.

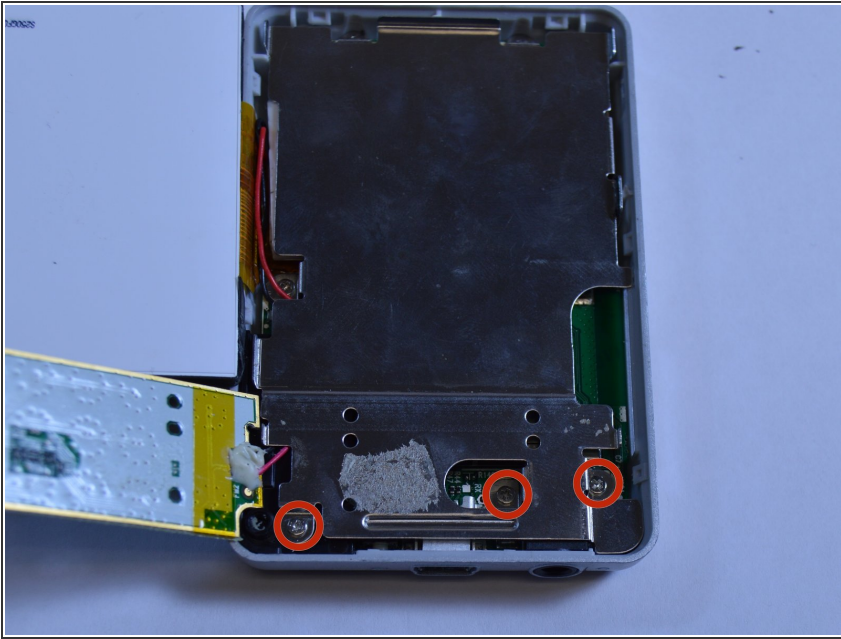
- ⓘ Be aware that the button input chip is glued to the mid-section, so some extra force may be required.

## Step 5 — Access Midsection Plate



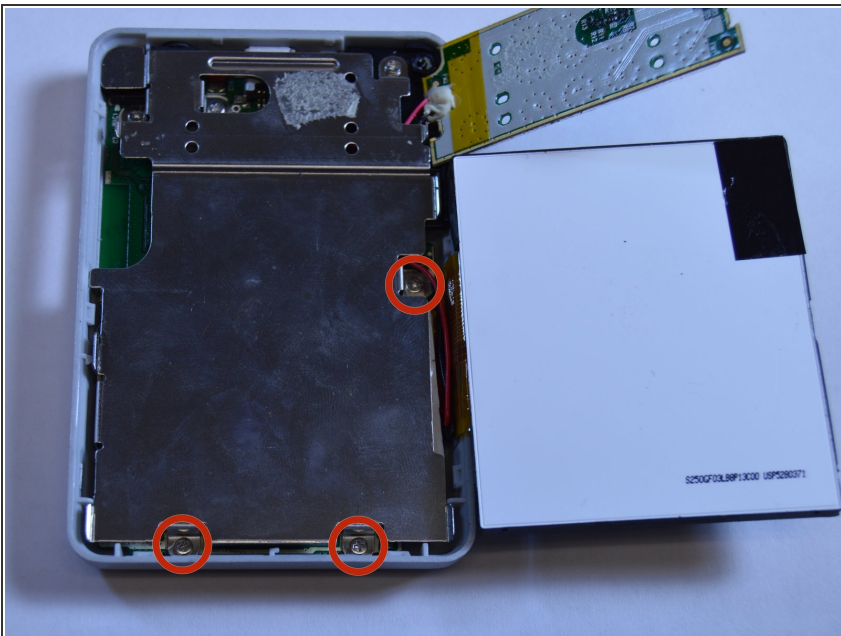
- Lift open the LCD screen and button input chip to access the entire midsection plate.

## Step 6 — Unscrew below Button Chip



- Use a Phillips Head screwdriver to unscrew the three 3/16 inch screws that were underneath the button input chip.

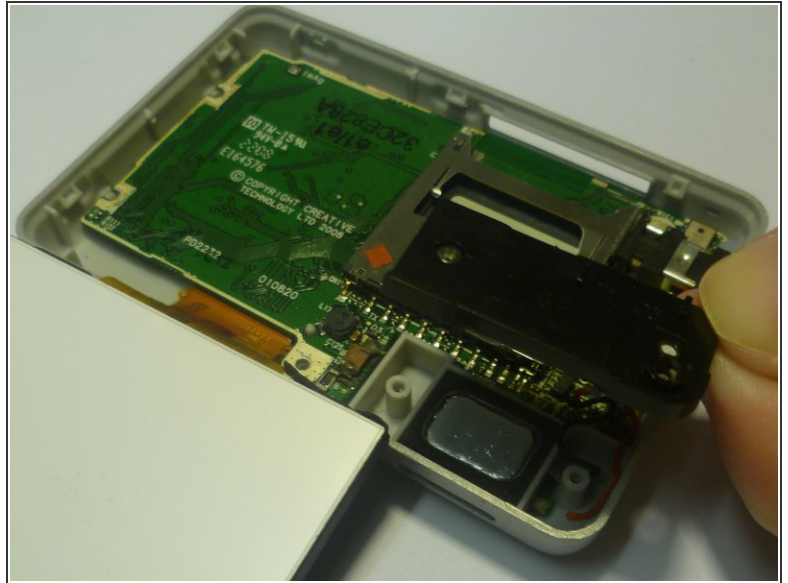
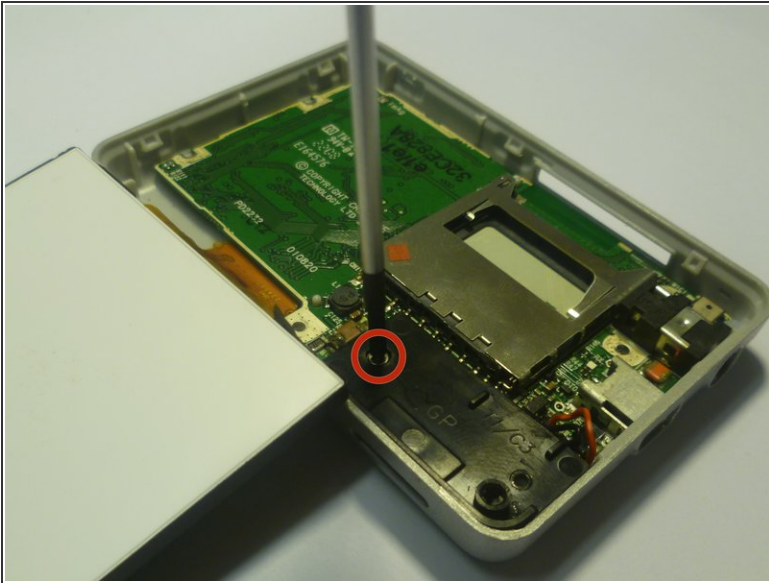
## Step 7 — Unscrew below LCD Screen



- Use a Phillips Head screwdriver to unscrew the three 3/16 inch screws that were underneath the LCD screen.



## Step 8 — Unscrew Speaker's Cover



- Use a Phillips Head screwdriver to unscrew the 3/16 inch screw that attaches the speaker's cover to the back case.
- Once unscrewed, pick up the case and put it to the side.

## Step 9 — Removing the Speaker



- With the speaker exposed, use a pair of tweezers to lift the speaker out of the slot.

To reassemble your device, follow these instructions in reverse order.