



# Replacing Electrolux PLD2850RDC2 Lower Door Seal

This guide will walk through the necessary steps of removing and replacing the lower door seal. Disassembly of the door panel is required in order to replace the lower door seal.

Written By: Ross



## INTRODUCTION

In this guide you will learn how to remove the dishwasher outer panel and replace the lower door seal. Disassembly of the door panel is required in order to replace the lower door seal.



### TOOLS:

- [Phillips #2 Screwdriver](#) (1)



### PARTS:

- [Lower door seal - part# 154297603](#) (1)

## Step 1 — Removing the outer door panel screws



- Start by opening up the dishwasher door to expose the outer door panel screws.
- Locate the 4 screws that attach the outer door panel to the door assembly and remove these completely from the door.
- Next, just slightly loosen the 4 control panel screws at the top of the door panel to make removal of the panel easier.



## Step 2 — Removing the outer door panel



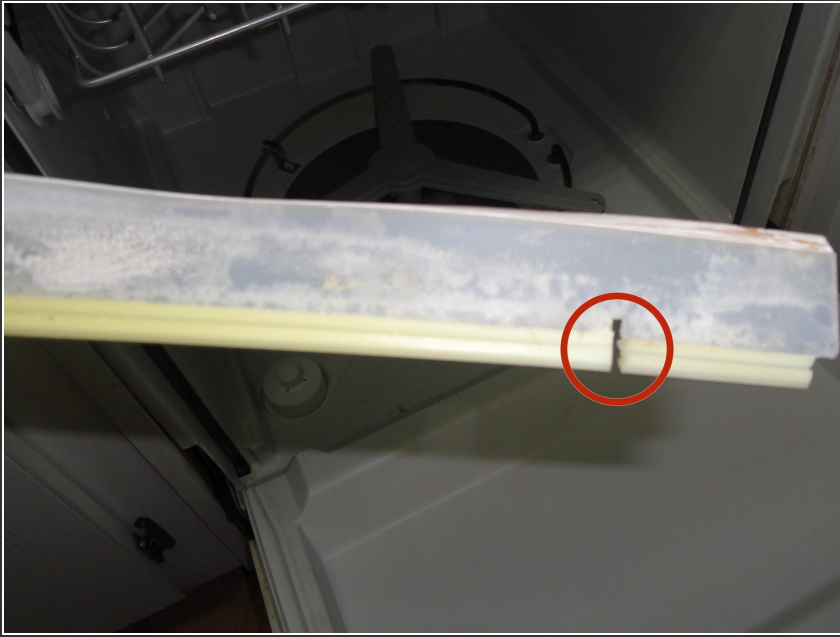
- After removing the screws, close the dishwasher door and slide the outer door panel downward by applying a little force to the handle. The door should slide down about an inch.
- Once the panel slides down, pull the handle outward towards you to remove the outer door panel and expose the inner door panel.

## Step 3 — Removing the old seal



- Now that the outer door panel is removed, you can open the door and locate the lower door seal on the bottom edge of the door.
- Gently pull the exposed edge of the seal away from bottom edge of the door and towards the dishwasher tub.

## Step 4 — Alignment tab placement



- i** Note that when installing the new seal there is an alignment tab located on the right hand side of the dishwasher (your right while facing the dishwasher). This tab needs to fit into the existing slot. If you have difficulty aligning this tab, you can remove the lower dishwasher rack to get a better view of the bottom side of the door.

To reassemble your device, follow these instructions in reverse order.