



Replacing Olympus Stylus Tough-6000 Battery/Memory Card Cover Lock

The Battery/Memory Card Cover Lock on your Olympus Stylus Tough-6000 has stopped working.

Written By: Shannon Cooney



INTRODUCTION

I will be providing clear and easy steps on how to replace your Battery/Memory Card Cover Lock on your digital camera with out having to buy another one.

TOOLS:

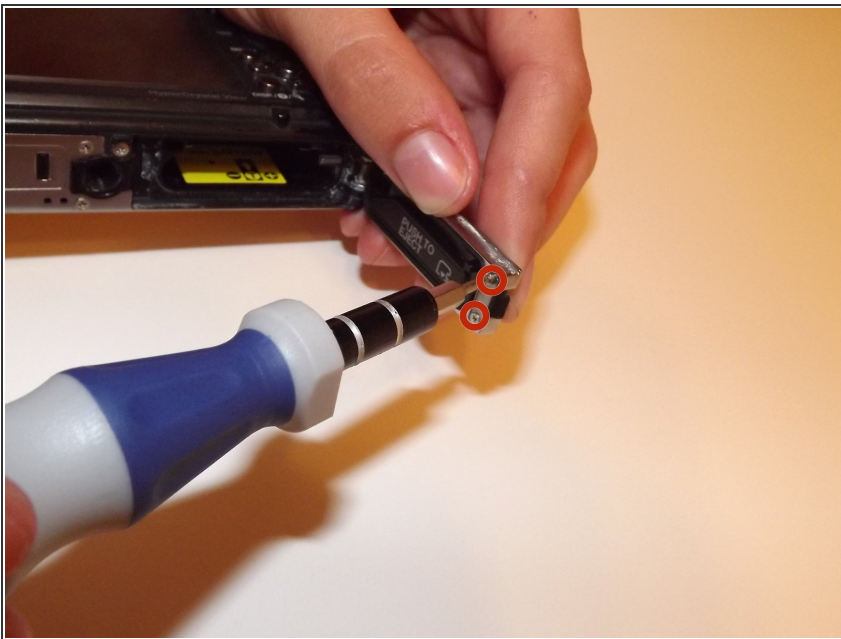
- [Phillips #00 Screwdriver](#) (1)
 - [Tweezers](#) (1)
-

Step 1 — Locate the Battery/Memory Card Cover Lock.



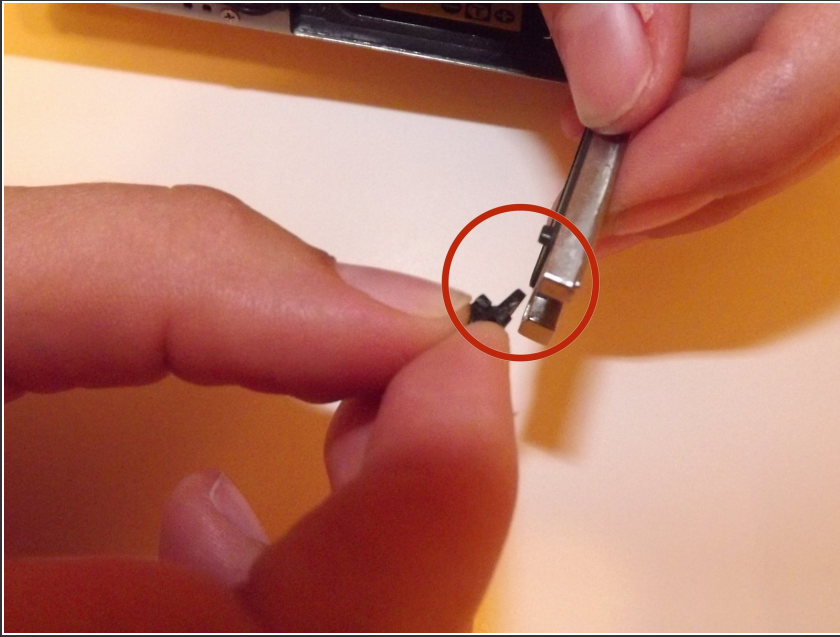
- Turn the camera so the bottom is facing upwards.

Step 2



- First pull open latch to expose two screws covering lock.
- Use your Phillips #00 screwdriver and unscrew both screws.

Step 3



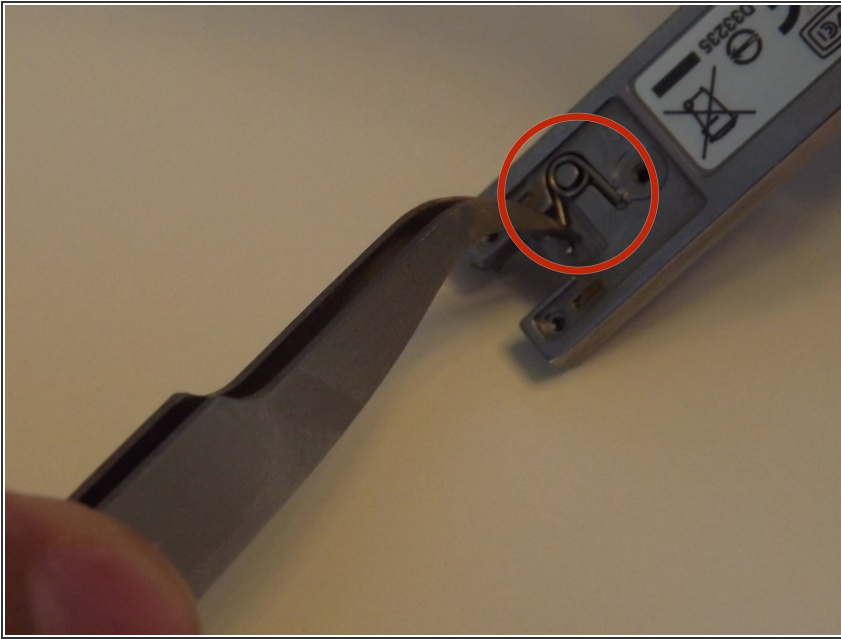
- Remove the small black lock.

Step 4



- Turn latch over.
- There will be one screw visible holding down the cover.
- Unscrew single screw with your Phillips #00 screwdriver.

Step 5



- ① Use your tweezers for this step.
- After unscrewing the screw you will see a single spring.
- Make sure spring is in place to be able to close lock properly.

To reassemble your device, follow these instructions in reverse order.