



Replacing Oster 6329 Bread Lift Shelf

This guide shows how to replace the toaster's bread lift shelf.

Written By: Jason Yoon



INTRODUCTION

It is fairly simple to replace the bread lift shelf, even though the metal flaps holding the bread lift shelf can be difficult to access.



TOOLS:

- [Large Needle Nose Pliers](#) (1)
 - [Flathead Screwdriver](#) (1)
-

Step 1 — Outer Shell Removal



- Using the Phillips-head #2 screwdriver, unscrew the three 1cm Phillips-head screws on the plastic base of the toaster to separate the outer metal shell from the plastic base.

Step 2



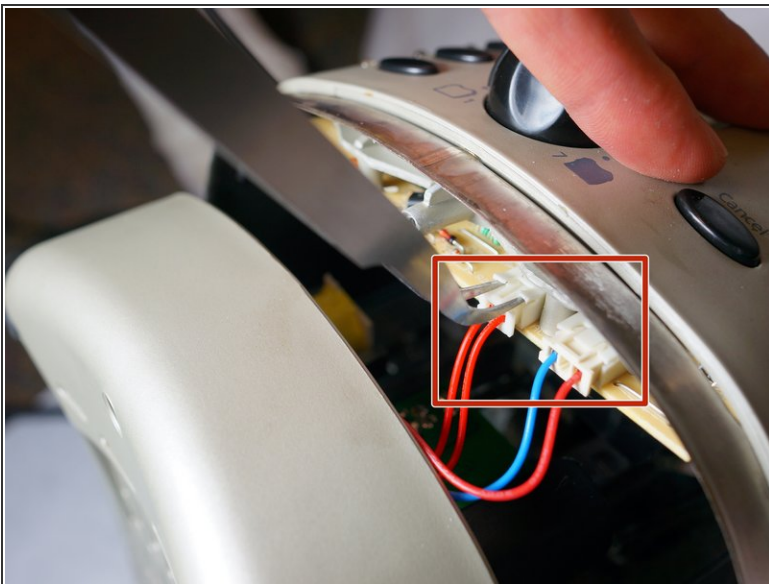
- Push the plastic push-down handle down and pull the plastic handle straight from metal arm.

Step 3



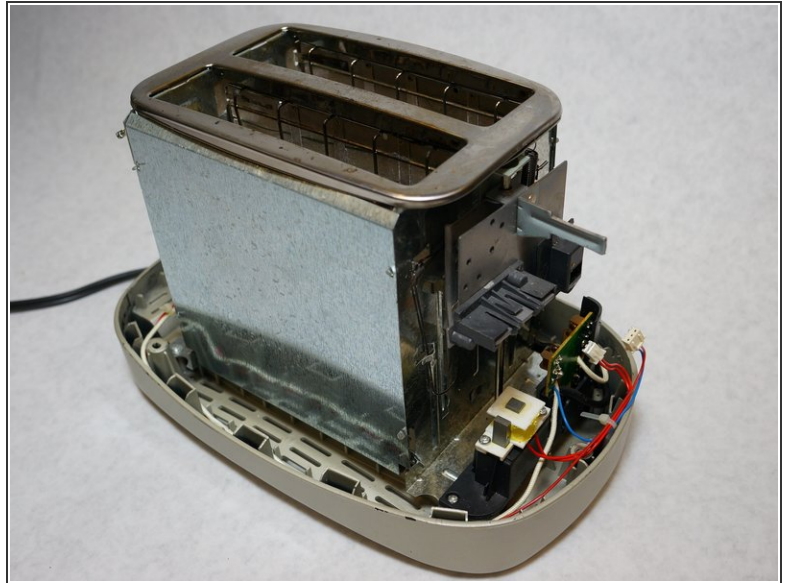
- Loosen the outer metal shell from the plastic base by holding the plastic base while pulling up on the metal shell.
- ⓘ Only lift the outer shell a little so as not to disconnect the cables that connect the circuit board.

Step 4



- Disconnect the cable clips from the circuit board using the tweezers to free the outer metal shell from the plastic base.

Step 5



- Lift the top outer metal shell.

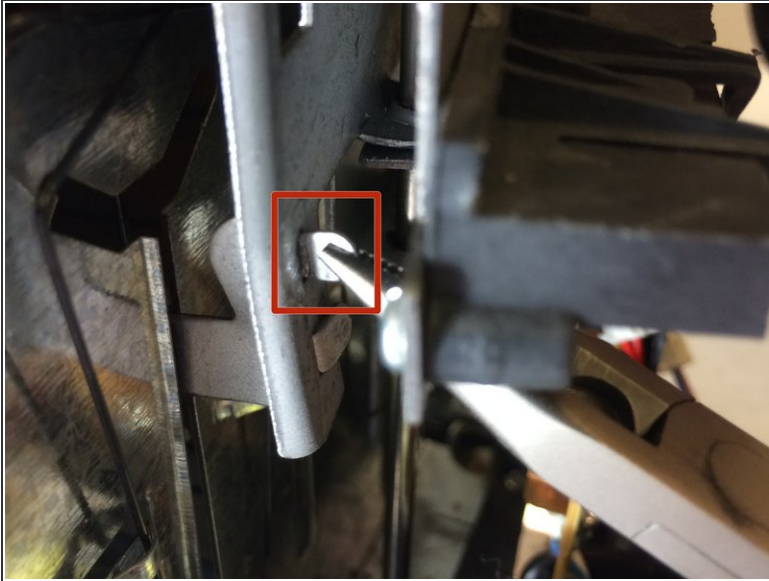
⚠ Carefully lift the outer metal shell at an angle so as not to damage the components in the front of the toaster.

Step 6 — Bread Lift Shelf



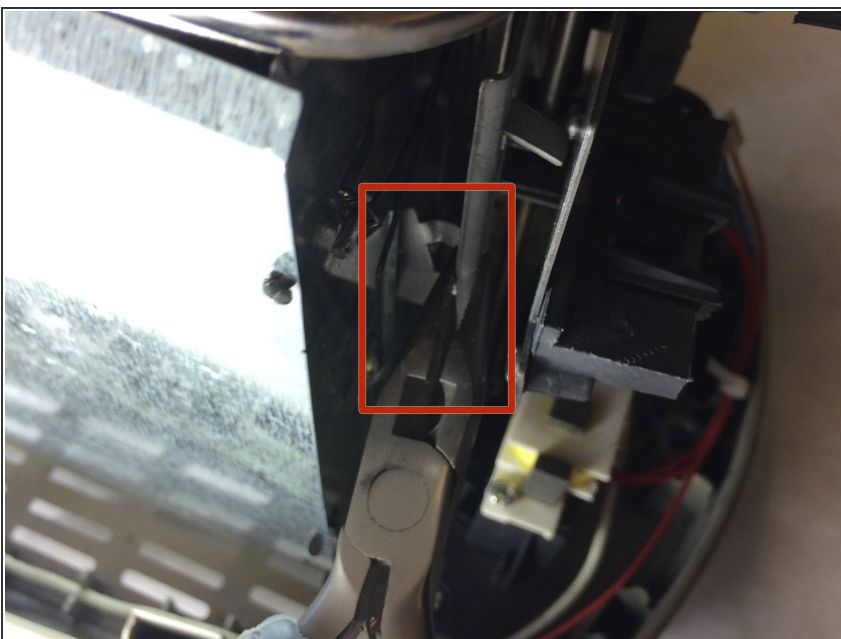
- Use a flat-head screwdriver to separate the metal flap from the metal plate.

Step 7



- Grasp the metal flap with the large needle nose pliers.
- Unbend metal flap until at a 90 degree angle from the metal plate.
- Repeat these steps for the second metal flap.

Step 8



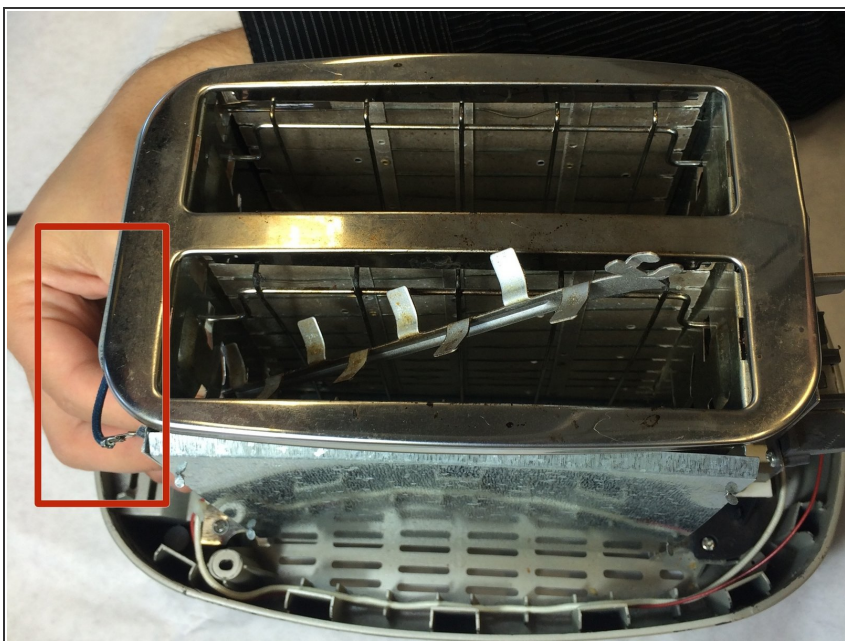
- Use the large need nose pliers to grab the metal panel.
- Pull the metal panel away from the body of the toaster to dislodge the flaps.

Step 9



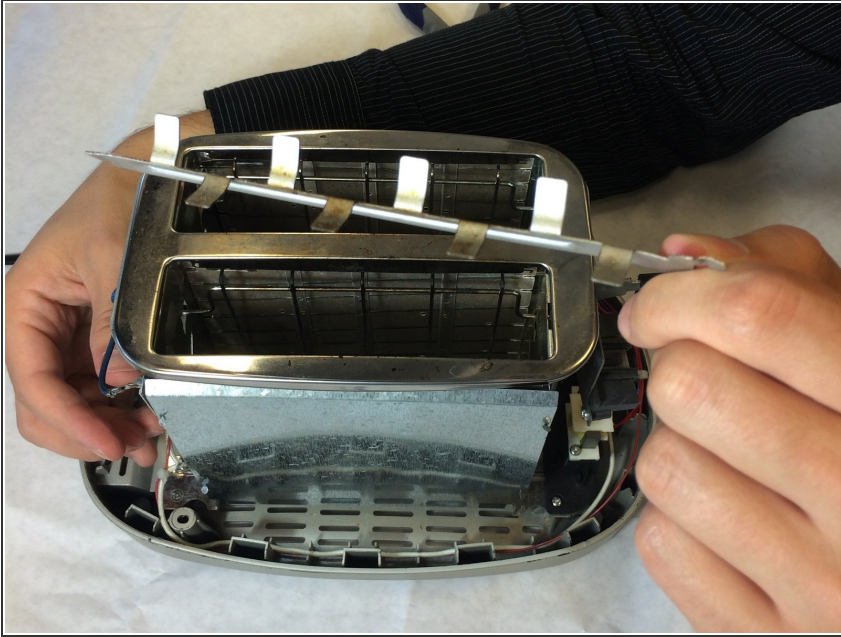
- Push the metal flaps towards the body of the toaster to access the bread lift shelf.

Step 10



- Push down on the opposite side of the bread lift shelf to expose the metal flaps.

Step 11



- Pull up on the bread lift shelf to remove from the toaster.

To reassemble your device, follow these instructions in reverse order.