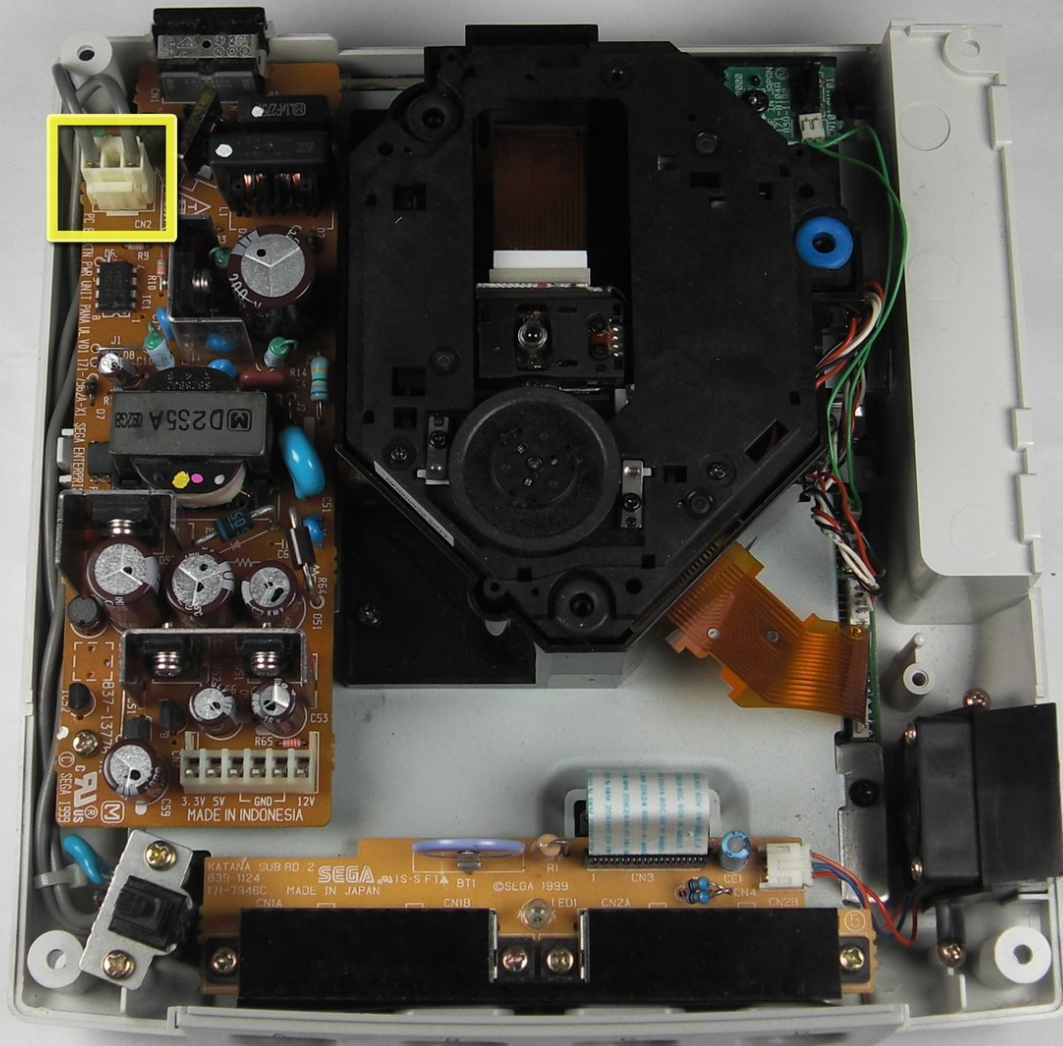




# Replacing Sega Dreamcast Power Block (Power Supply)

Written By: wkwong



---

## INTRODUCTION

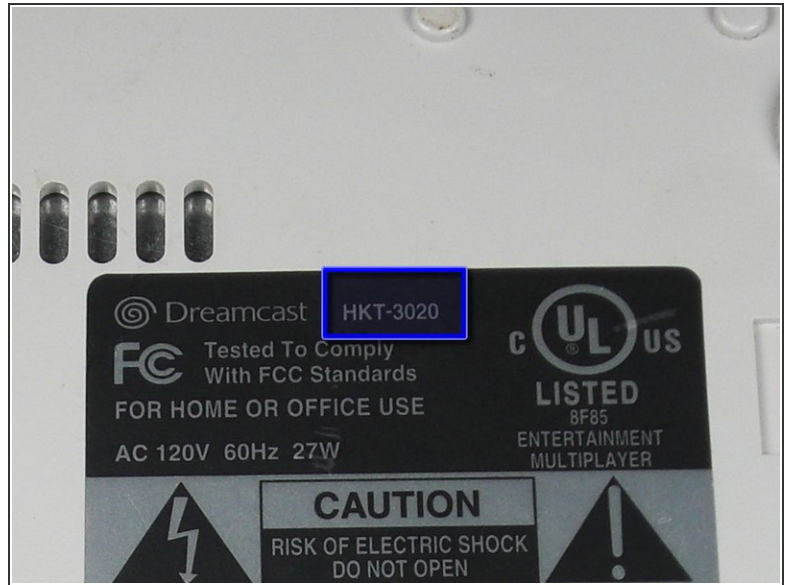
A guide to remove power block from the Sega Dreamcast.



### TOOLS:

- [Phillips #2 Screwdriver](#) (1)
-

## Step 1 — Expansion Bay



⚠ Verify that the console is disconnected from the AC outlet before you begin.

- Flip the console over on its back.
- Take note of your model number , in case replacement parts are needed.

## Step 2



- Remove the expansion bay by applying pressure to the small clip on the expansion bay while prying it away from the console.



## Step 3 — Top Cover



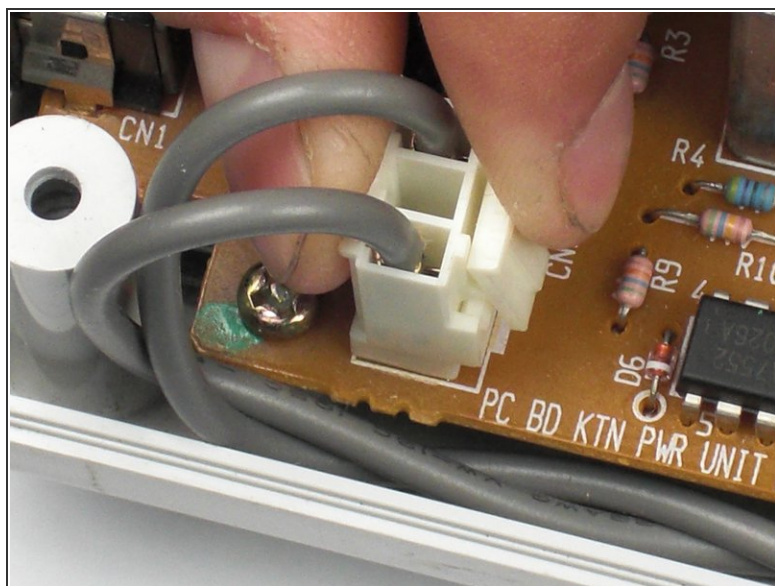
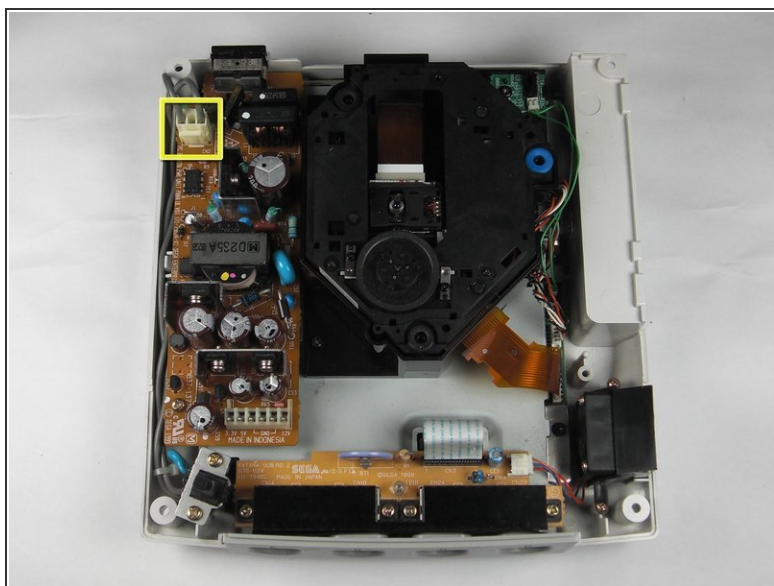
- **Locate and remove all four black 12mm Phillips #02 screws** from the underside of the console.
- ⓘ **Note:** Remove the expansion bay to locate the fourth screw

## Step 4



- ⚠ **Internal components can be loose.** Be careful that they do not fall out when removing the cover.
- Turn the console right side up.
- **Remove the top cover** by gently lifting the upper portion of the console.

## Step 5 — Power Block (Power Supply)

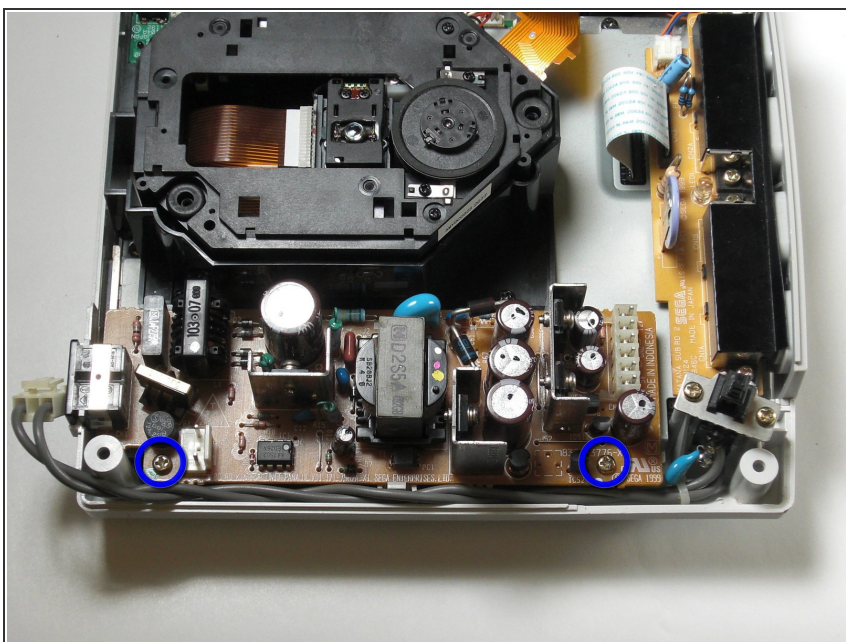


**⚠ Verify that the console is disconnected from the AC outlet before you begin. If you have just powered off the system, give the capacitors a few minutes to discharge before you begin working.**

- **Remove the white female pin header** by clamping the clip and pulling it up gently from the power board.

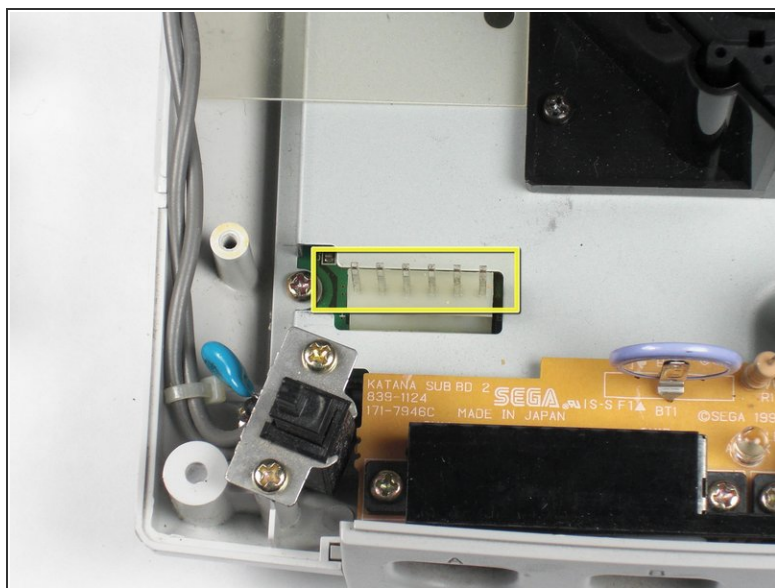
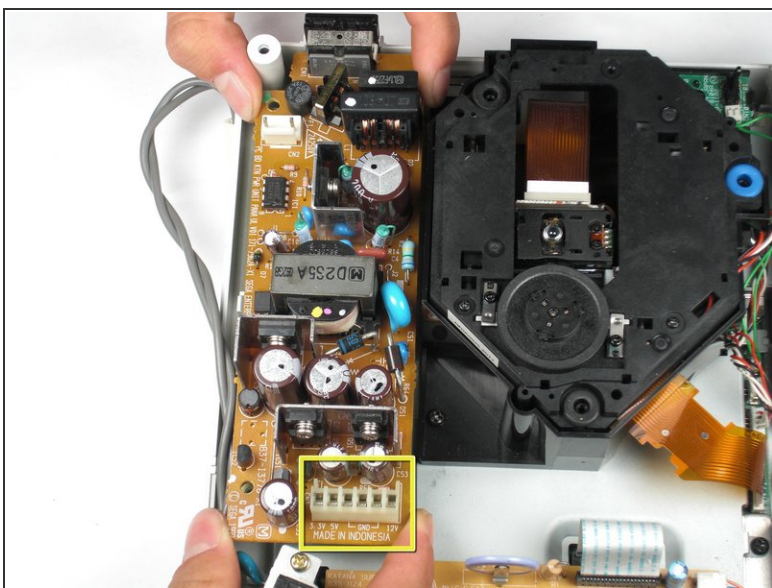


## Step 6



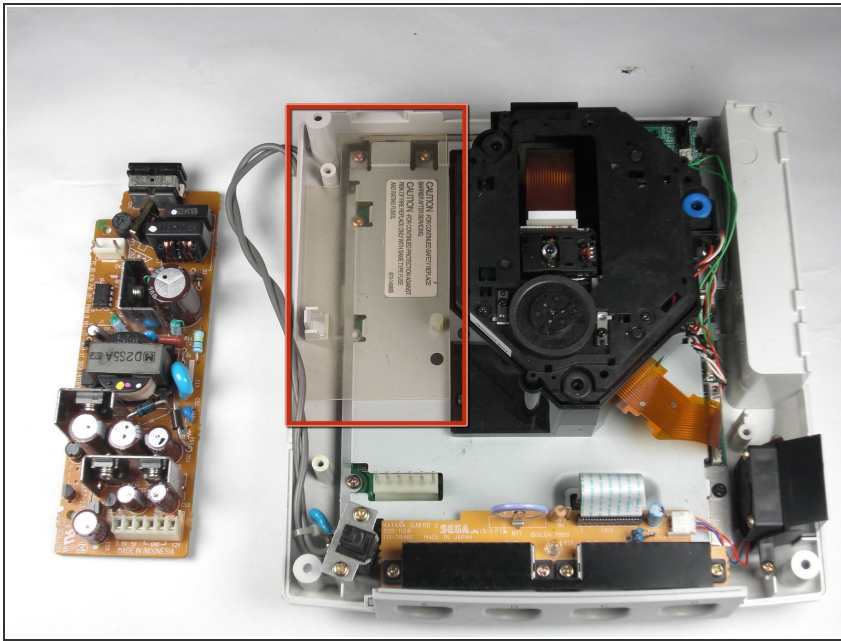
- Remove the two 10mm Philips #02 screws that are fastened to the power block.

## Step 7



- Do not bend the male pin header between the mounted head when you remove the power supply from the chassis.
- Remove the power board by using both hands to gently lift the power board away from the console.

## Step 8



- **Remove the clear plastic film** that is tucked between the power supply and the chassis.

To reassemble your device, follow these instructions in reverse order.