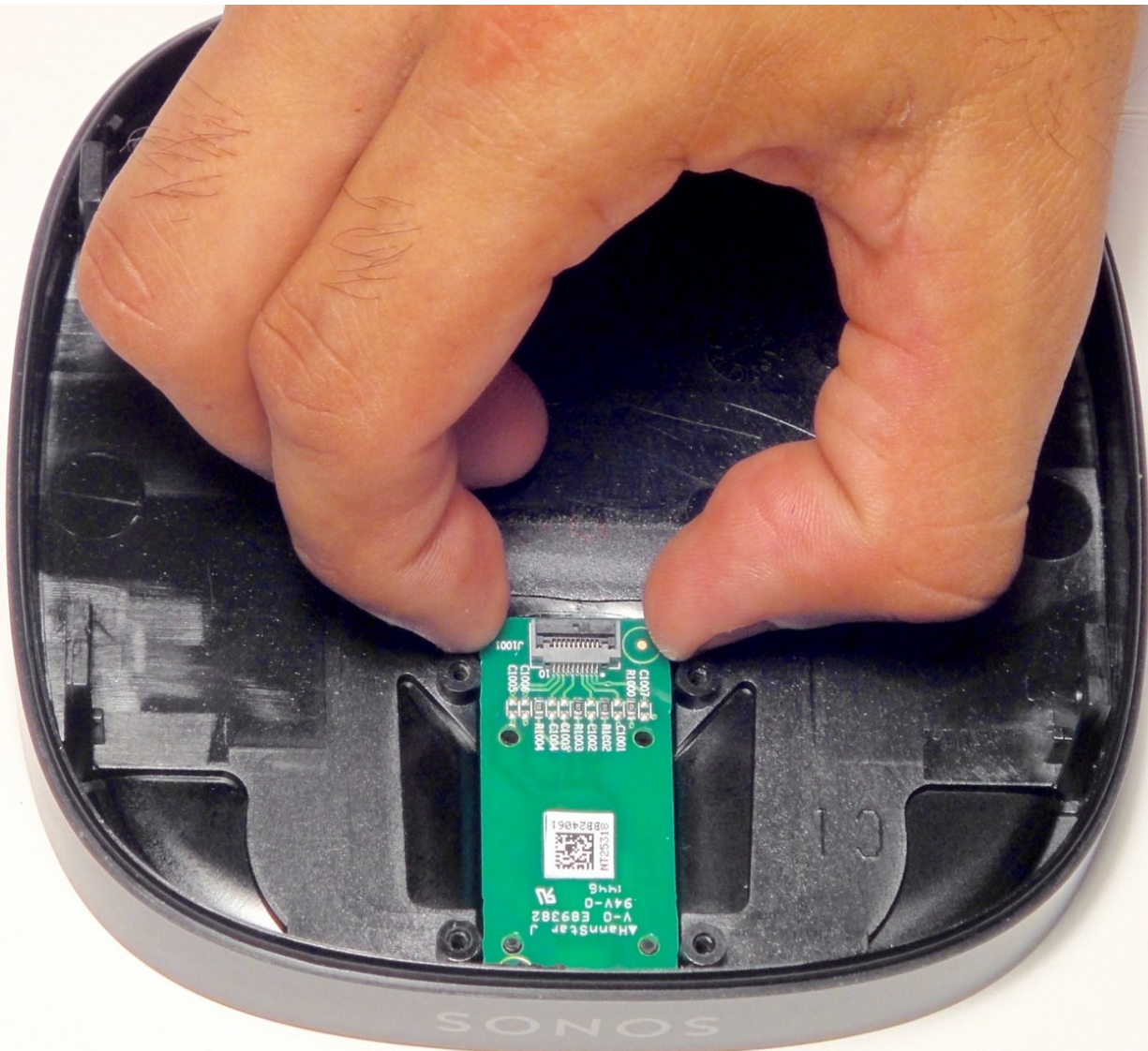




Replacing Sonos Play 1 Power and Volume switch board.

Using the guide will give you a step by step procedure on how to remove a faulty power/volume switch board (this guide requires 54 bit driver kit, prying tools, tweezers, and metal spudger).

Written By: Patty



INTRODUCTION

If the Sonos Play:1 has a damaged power/volume switchboard, this could prevent the device from powering on or off and could render the volume nonadjustable. To replace the switch board, remove the screws and protective plastic cover fastening the top cover to the speaker housing. Inside the cover lies the power/volume switch board.



TOOLS:

- [64 Bit Driver Kit](#) (1)
 - [iFixit Opening Tools](#) (1)
 - [Tweezers](#) (1)
 - [Metal Spudger](#) (1)
-

Step 1 — Exterior Screen



- Remove the rubber footing from the bottom of the device. Pry it up from one end using one of the plastic opening tools.
- Once you pry open one end, use precision tweezers to remove rubber footing.

Step 2



- Using a metal spudger, pry open a corner of the adhesive tape.
- Use precision tweezers to remove the adhesive tape.

Step 3



- Remove the four 10 mm Torx security #10 screws that hold the base together.
- Remove the base by lifting it vertically away from the bulk of the device.

Step 4



- Remove the 10 mm Torx security #10 screw that holds down the exterior screen.
- Using precision tweezers, remove the metal bracket.

Step 5



- Remove the exterior screen by lifting it away from the bulk of the device.

Step 6 — Sonos Play 1 Top Cover Disassembly



- Remove the four 9 mm Torx Security #9 head screws. There are two on each side.

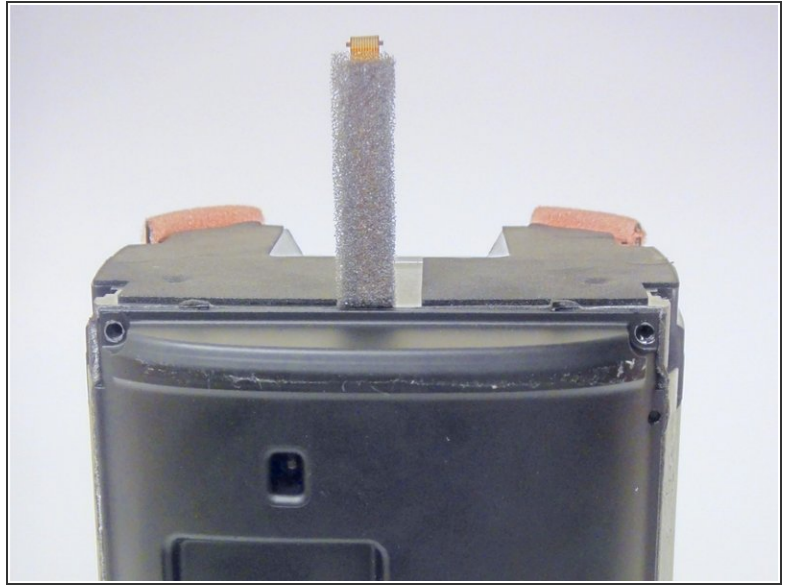
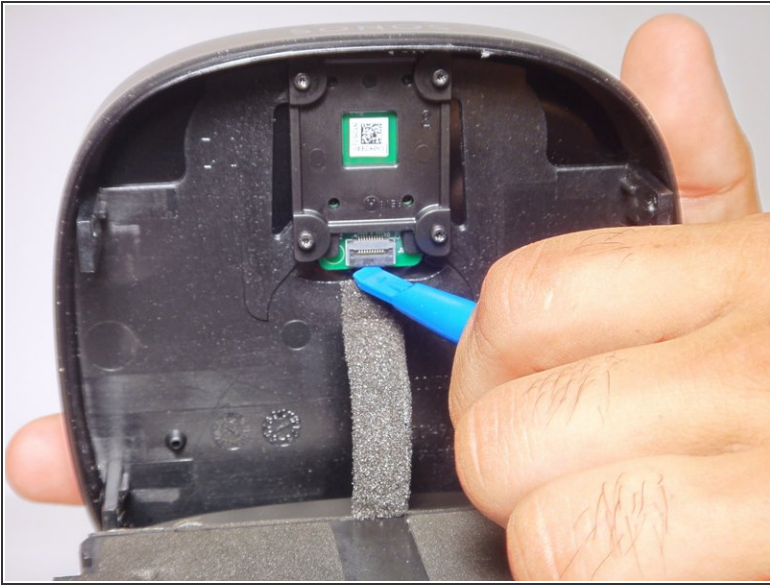
Step 7



- Using a plastic opening tool, pry open the top cap containing the power and volume button.
- Vertically remove the top cap.

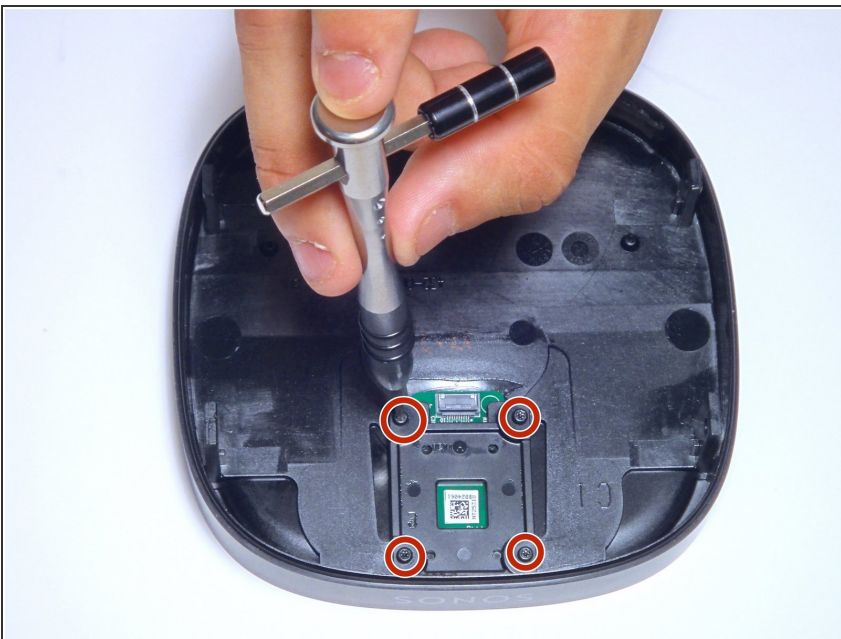
⚠ Be sure to not jerk the top cap when removing, as to not damage the cable linking the switchboard to the motherboard.

Step 8



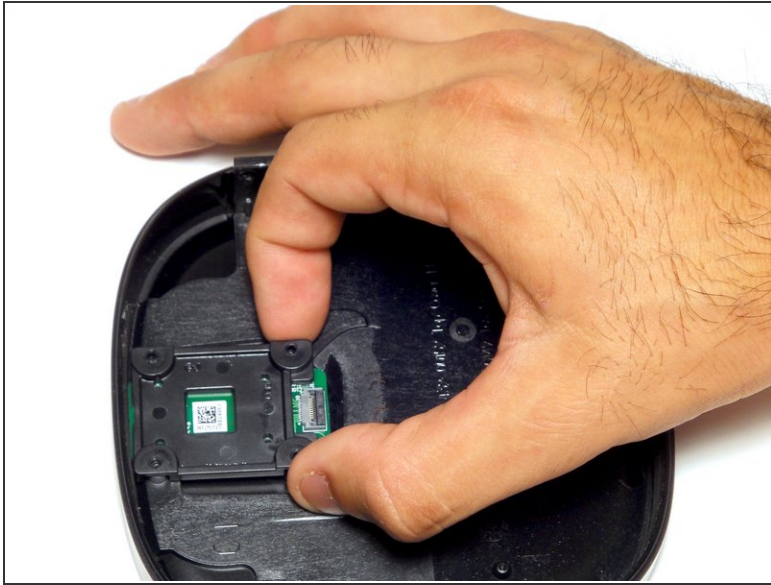
- Using a plastic opening tool, pry open the circuit flap.
- Once flap is loosened, use your hand to remove the circuit wire.

Step 9 — Power and Volume Switch Board



- Using a screwdriver with a Torx T6 bit, remove the four highlighted 7mm screws.
- Using your fingers remove the protective plastic plate covering the device.

Step 10



- Using your fingers remove the plastic cover plate securing the switchboard.
- Using your fingers, remove the power/volume switch board.

To reassemble your device, follow these instructions in reverse order.