



Replacing bObsweep Robotic Vacuum's Floor Sensors

Steps to resolving an error 4 issue on bObsweep standard or pethair version. This manual guides you through removal and replacement of Bob's floor detection sensors.

Written By: Tatiana



INTRODUCTION

A simple repair for bObsweep's ground sensors, which includes opening Bob, replacing the sensors, and closing your vacuum.



TOOLS:

- [Phillips #2 Screwdriver](#) (1)



PARTS:

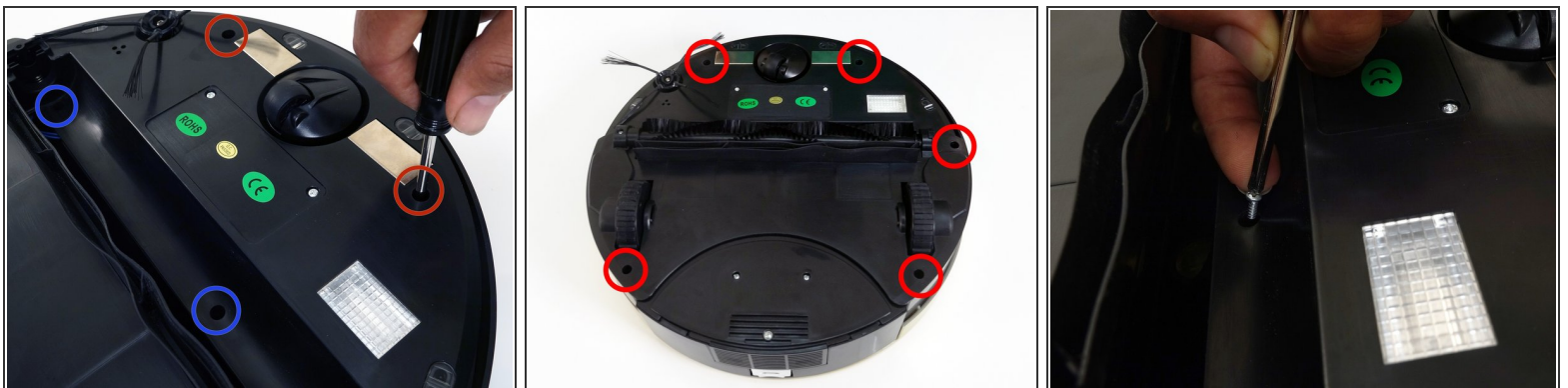
- [bObsweep Ground Detection Sensors](#) (1)

Step 1 — bObsweep's cover



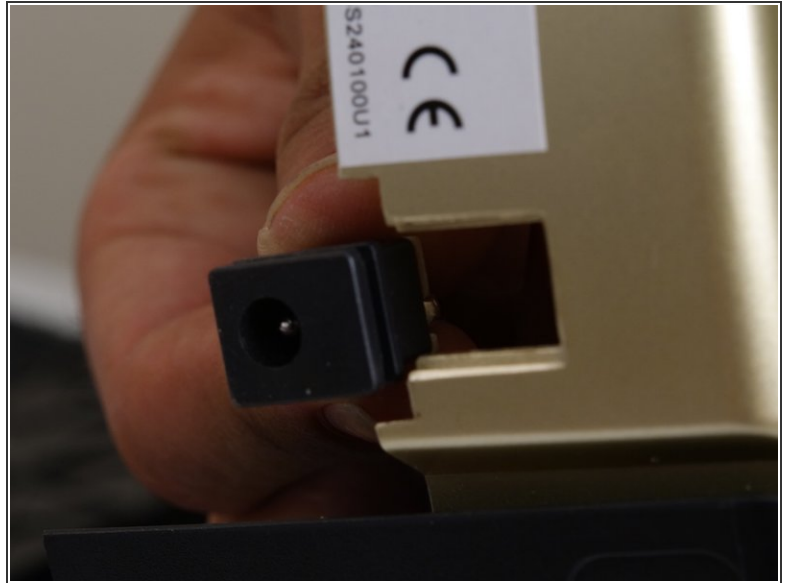
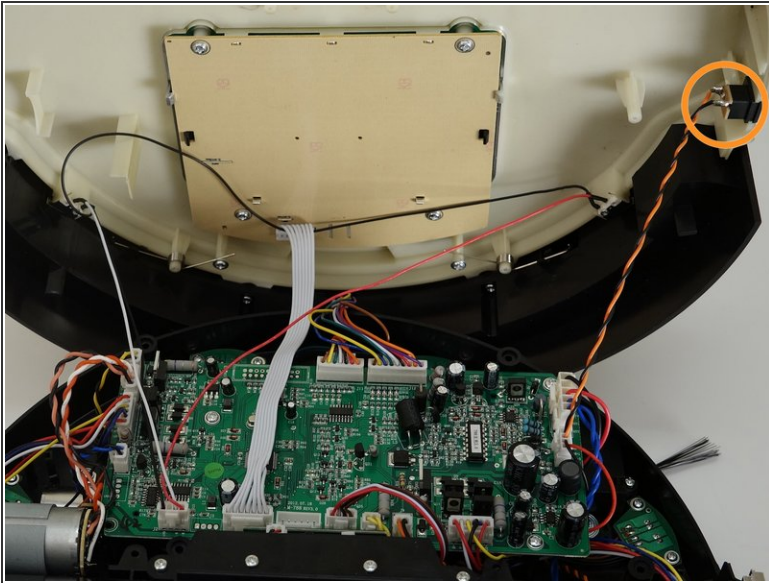
- Flip Bob over and remove the 7 screws around which hold the cover together.
 - Remove the main brush. Unscrew the holder, and lift the brush out. Reminder: Keep this screw separate from the others so you can use it later to reinstall.
- ⓘ Depending on your model, there may be only 6 screws installed on bObsweep.

Step 2



- There are two screw holes inside the brush compartment: one in the centre, one on the left end. Remove both and keep aside for reassembly.
- There are five more screws around bObsweep's edges. Two are installed at the top and bottom, and one on the right end of the main brush.

Step 3



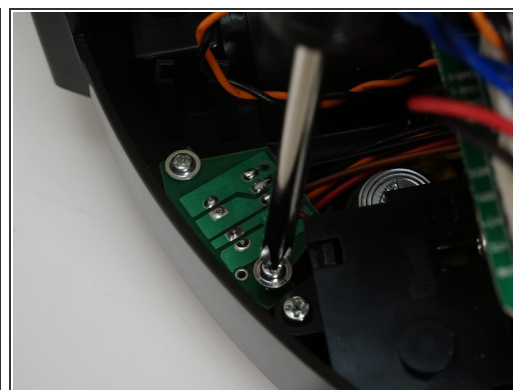
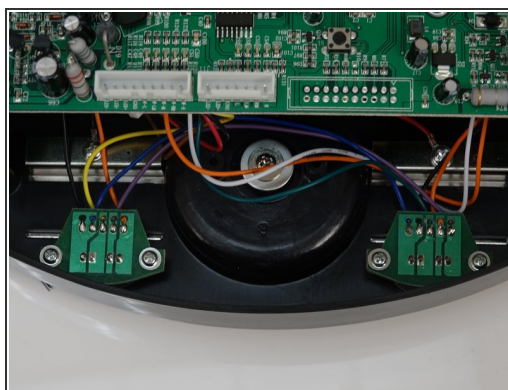
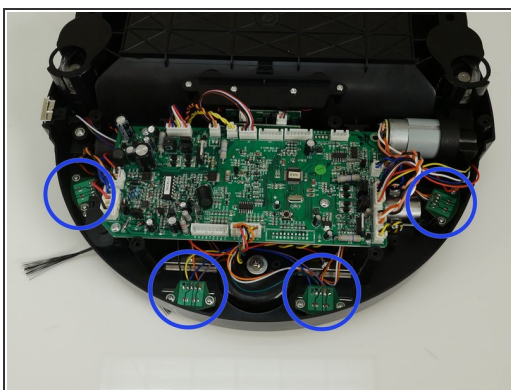
- Flip bOb back over so you can see the screen. Lift the cover up to reveal bObsweep's main board.
- Detach the power inlet from the cover. Grip and slide it out.

Step 4



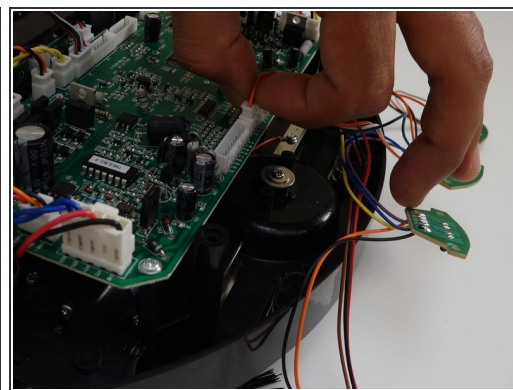
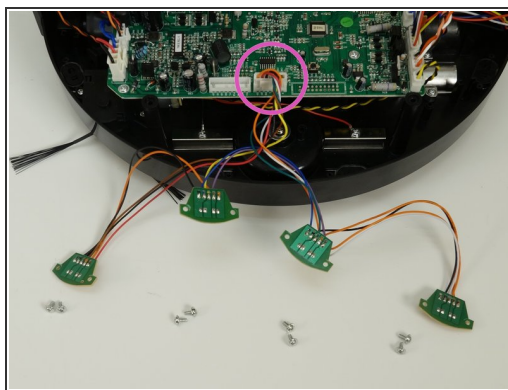
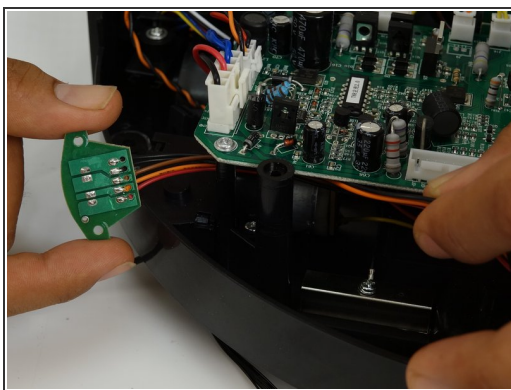
- Remove three circuit plugs from the motherboard. Pinch the small white tab on the side of each circuit plug and pull straight up to release each from the motherboard.
 - 1. On the bottom left corner: a small connector with red, black and white wires.
 - 2. One thick white wire that attaches on the right side of the previous connector.
 - 3. On the top edge of bOb's motherboard: a wide multicoloured connector.
- Place the cover aside and begin your repair.

Step 5 — Floor Sensors



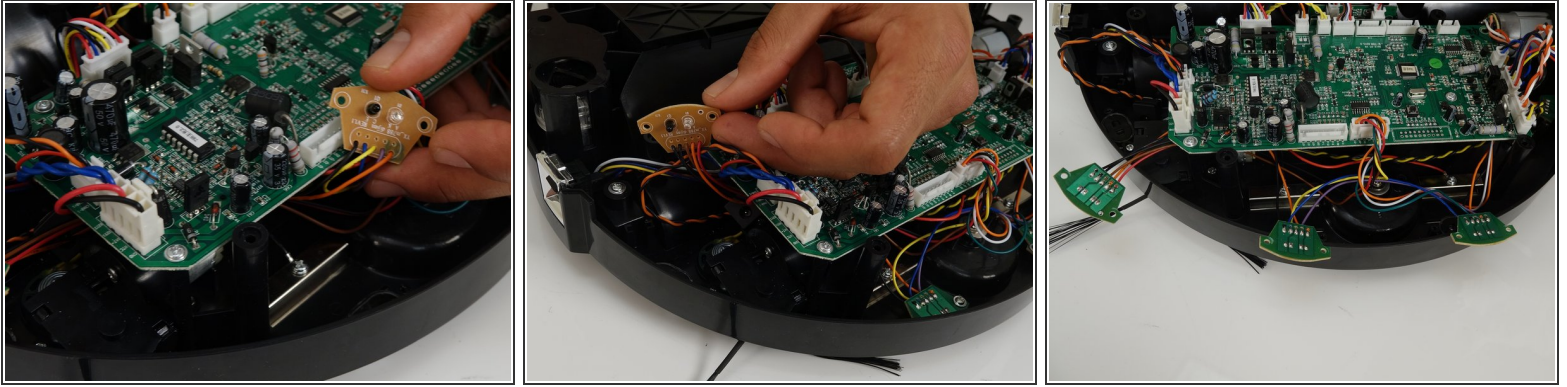
- There are four ground detecting sensors inside bObsweep, found in front of the main board.
- Use your screwdriver to remove all 8 screws holding the sensors in place. There are 2 on each sensor.
- ⓘ Remember to keep any parts removed from bObsweep safe for installation after your repair.

Step 6



- Lift the sensors out of bObsweep. All four are wired to the same circuit plug.
- You will need to feed some of the wires underneath the main board to get the entire piece out.
- Detach the multicolored circuit plug which connects the sensors to the main board to remove the part fully.
- ⓘ There are two plastic parts inside bObsweep that stay inside when replacing the floor sensors. If they are accidentally removed with the floor sensor piece, place them back inside.

Step 7



- Plug the replacement ground detection sensors into the newly opened space on the main board.
- Feed the wires for the end-most floor sensors underneath the main board before laying them down.
- Ensure they are all correctly lined up with the clear plastic covers inside Bob.

Step 8



- Install all 8 screws holding the ground detection sensors in place.
- Proceed to the Closing bObsweep guide: [Closing bObsweep's cover after repair](#)

When finished, bObsweep will be able to detect the floor beneath and avoid dangerous falls off ledges or down staircases. To reassemble the core, see the [Closing bOb Guide](#).