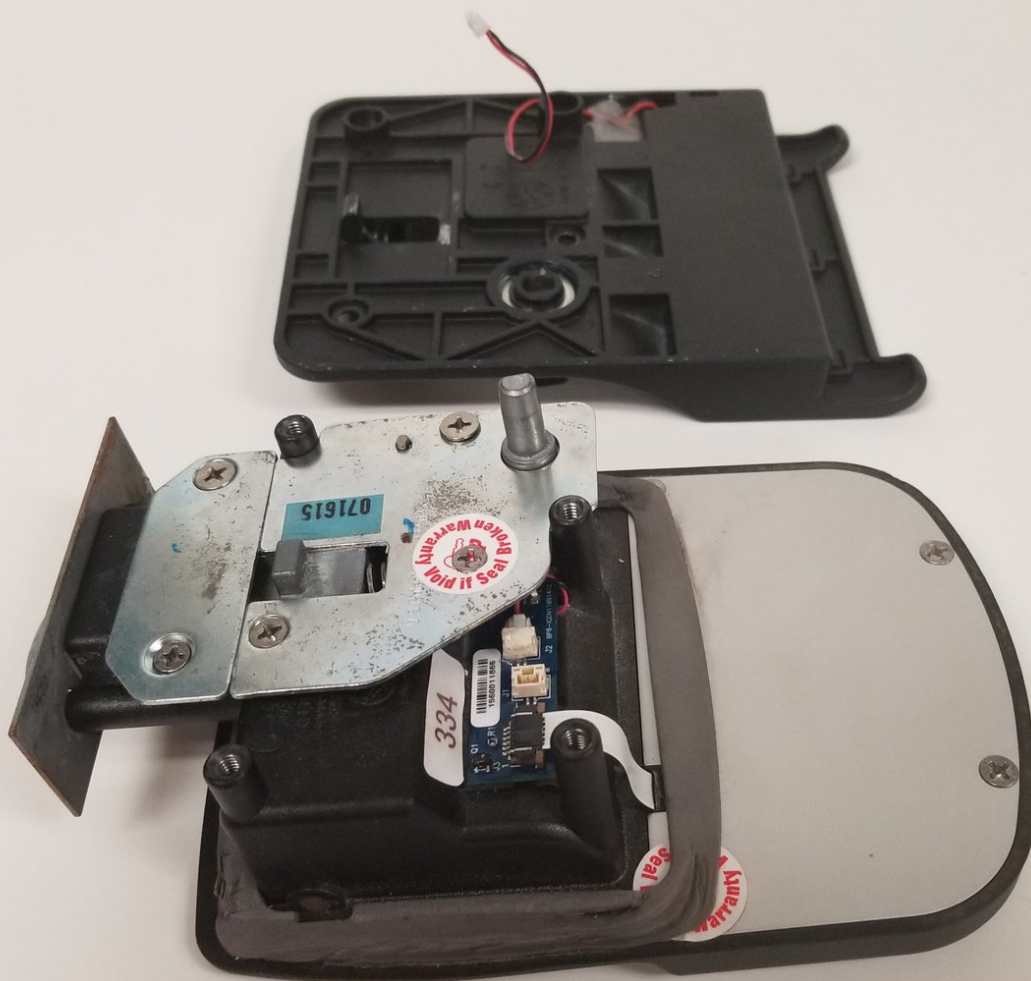




Replacing the Mechanical Actuator for a Bauer NE Electronic Trailer Lock

Instructions on how to remove and replace a bad or faulty actuator on a Bauer NE Electronic Trailer Lock.

Written By: Owen Soulliere



INTRODUCTION

This is a simple project that will make your Bauer NE Electronic Trailer Lock work again, if the actuator is the problem. There is no soldering required and there are not many tools that you will need. If you can put the trailer lock on the trailer door, you will be able to change the actuator.



TOOLS:

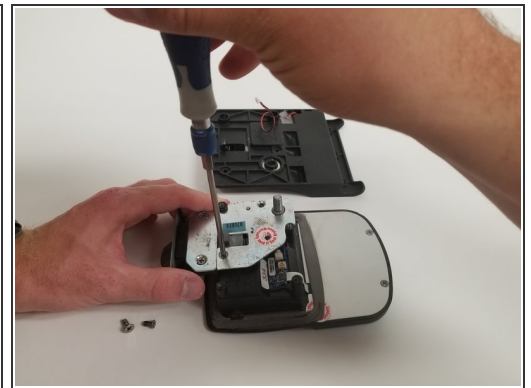
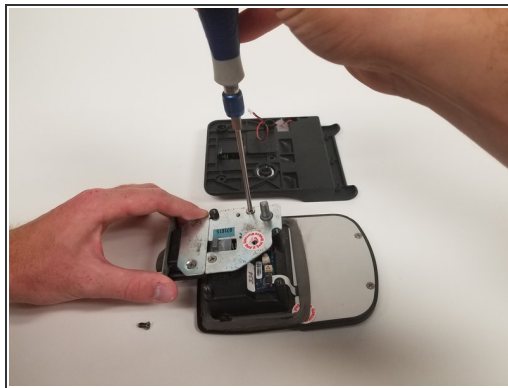
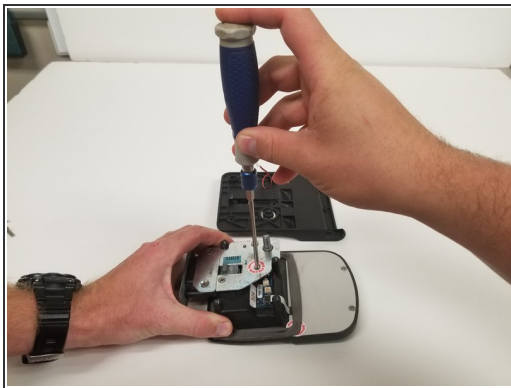
- [Phillips #2 Screwdriver](#) (1)
 - [iFixit Opening Tools](#) (1)
-

Step 1 — Actuator



i This guide assumes that the Bauer NE Electronic Trailer Lock is taken off the door prior to starting. The lock should look like this.

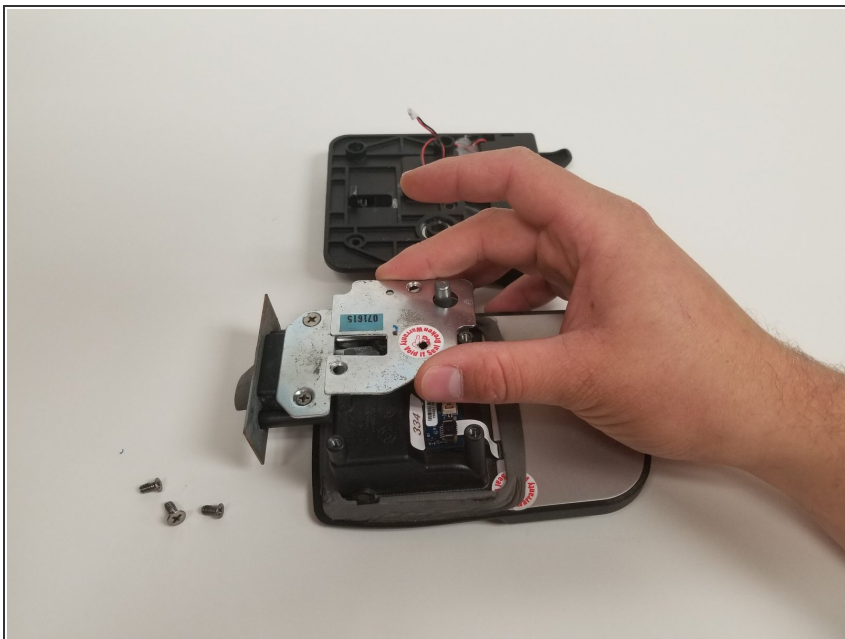
Step 2



- Begin by taking the three Philips screws off, which are holding the metal plate in place.

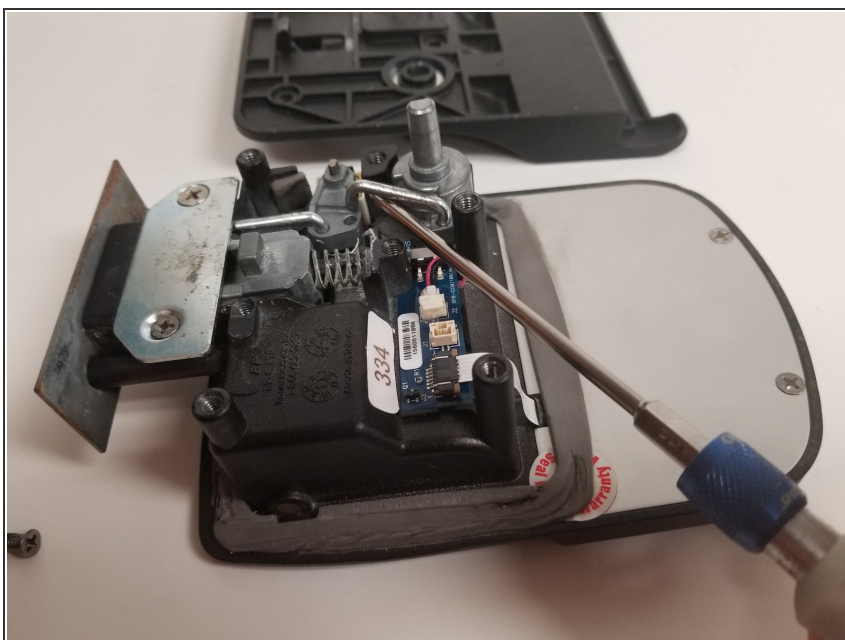
! One of the screws may be under a white sticker. When breaking this sticker, or taking these screws out, it may void the manufacturer's warranty.

Step 3



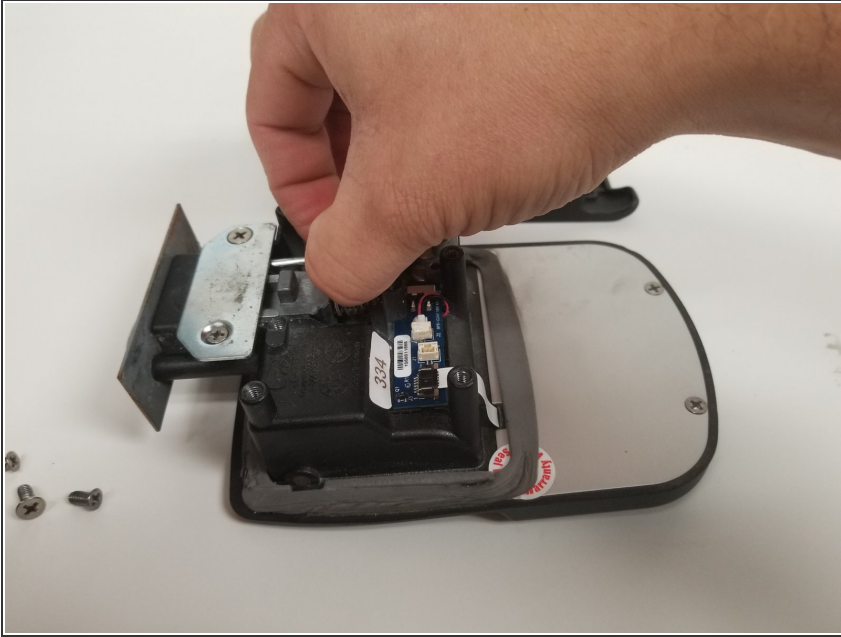
- Lift the metal plate straight upward, making sure not to move any other components within the lock.

Step 4



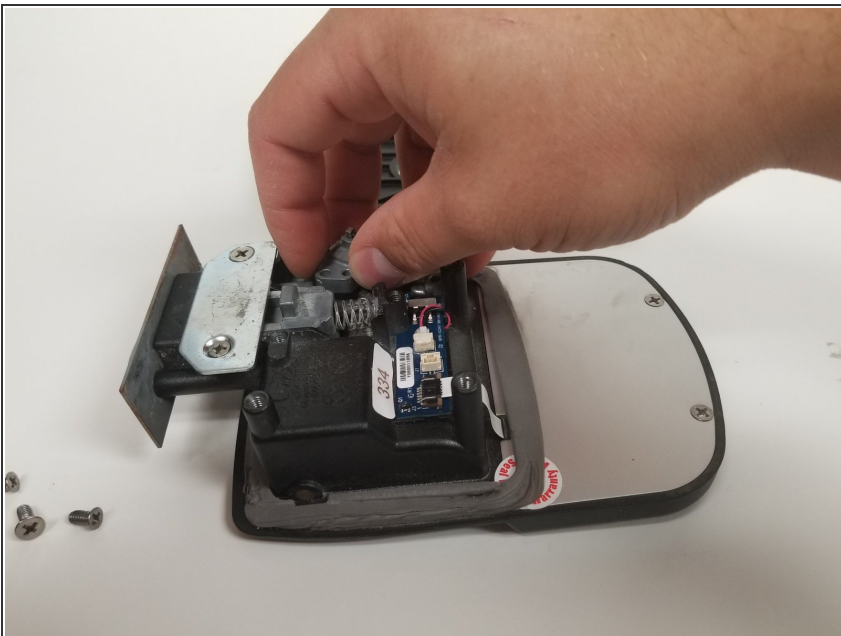
- Carefully lift the metal linking joint, which links the manual locking mechanism to the actuator mechanism.

Step 5



- Remove the second metal link, which connects the actuator mechanism to the deadbolt.

Step 6



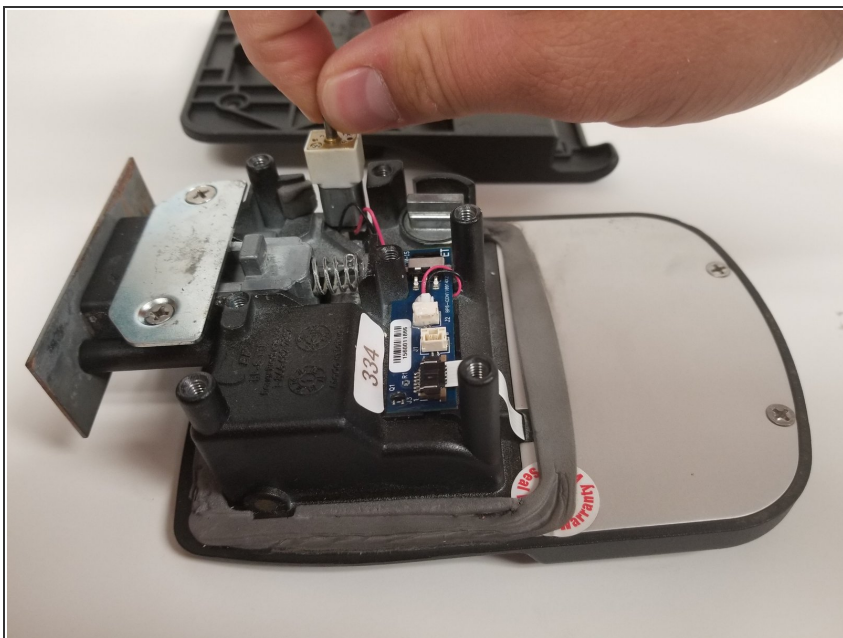
- Carefully pull the actuators mechanism straight upward.

Step 7



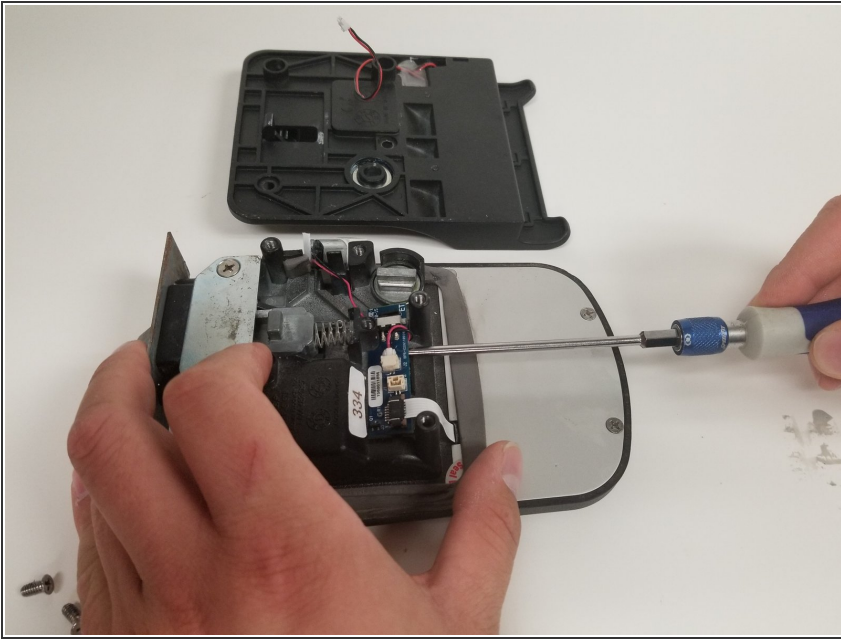
- Carefully pull the manual locking mechanism straight upward.

Step 8



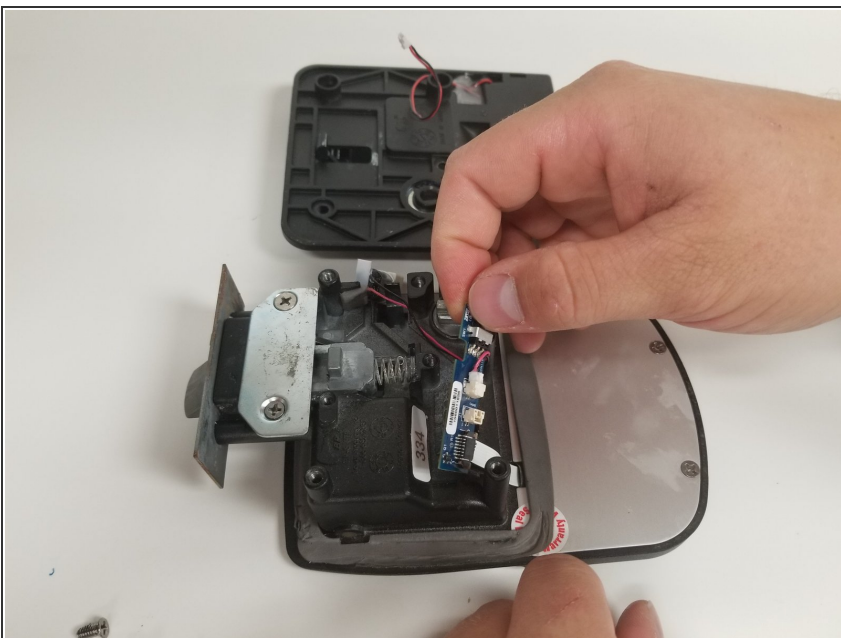
- Carefully grab the actuator and pull it slowly upward. Ensure to pull it up slowly, to prevent damaging the wires.
- ⓘ Pay close attention to where the wire is being roughed (underneath the circuit board).

Step 9



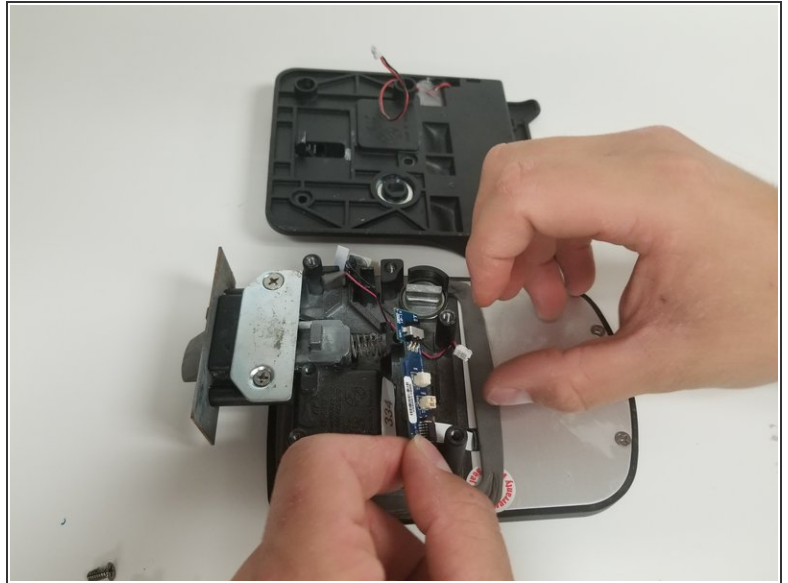
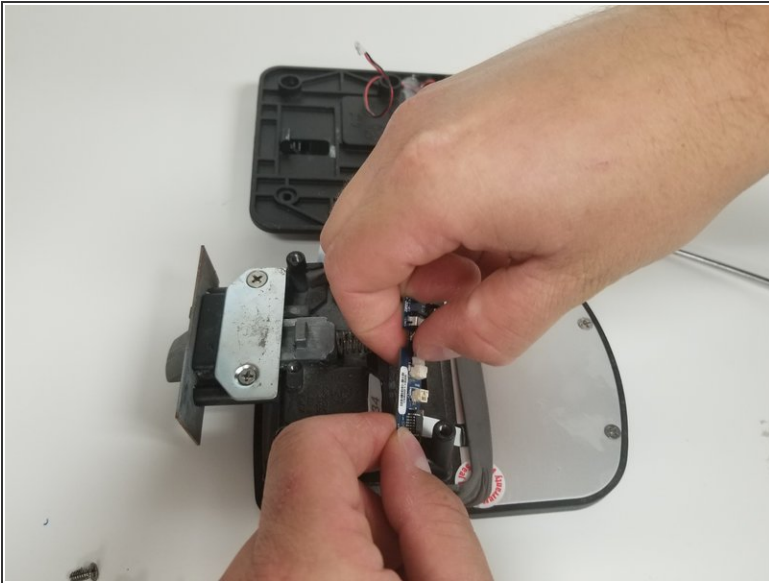
- Slowly begin to insert a flathead screw driver between the circuit board and the Bauer NE Electronic Trailer Lock housing.
- ⓘ It is recommended to use an iFitit opening tool vs. a flathead screw driver. This will prevent scratching or cracking of the circuit board.
- ⓘ One may better see where the wires are being roughed in this step, as the circuit board is being lifted.

Step 10



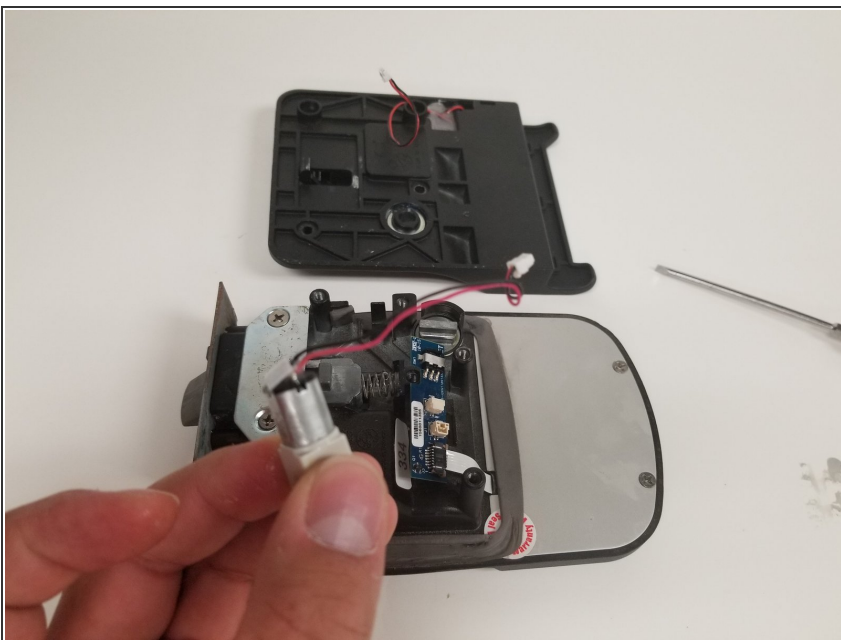
- Pull the circuit board off the Bauer NE Electronic Trailer Lock housing, making sure not to pull it too far way from the housing.

Step 11



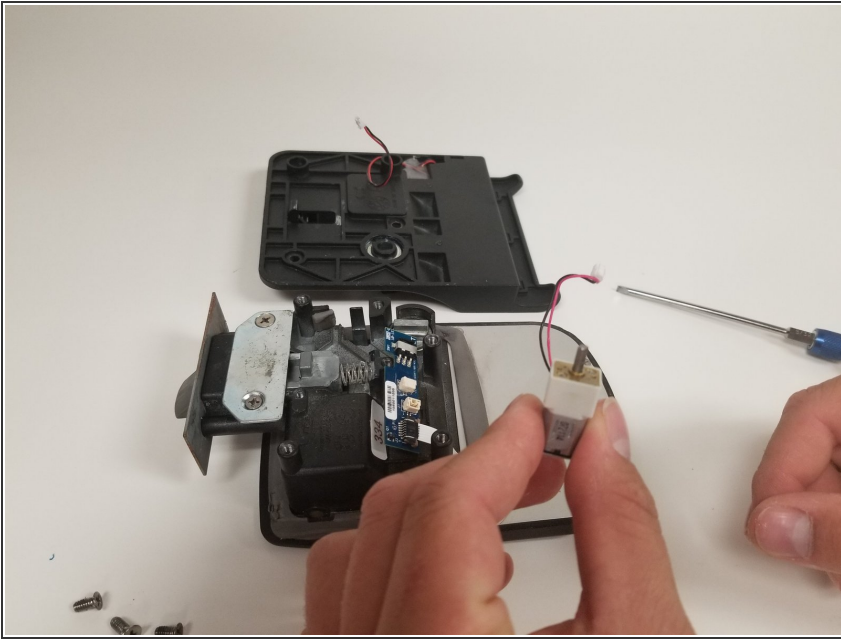
- Gently unplug the actuator's connector from the circuit board.
- i** This will be much like the connector that needed to be take off when taking the lock off the trailer door. It has a little tab, which you push down. Once you push down you'll be able to then pull the connector away from the connection.

Step 12



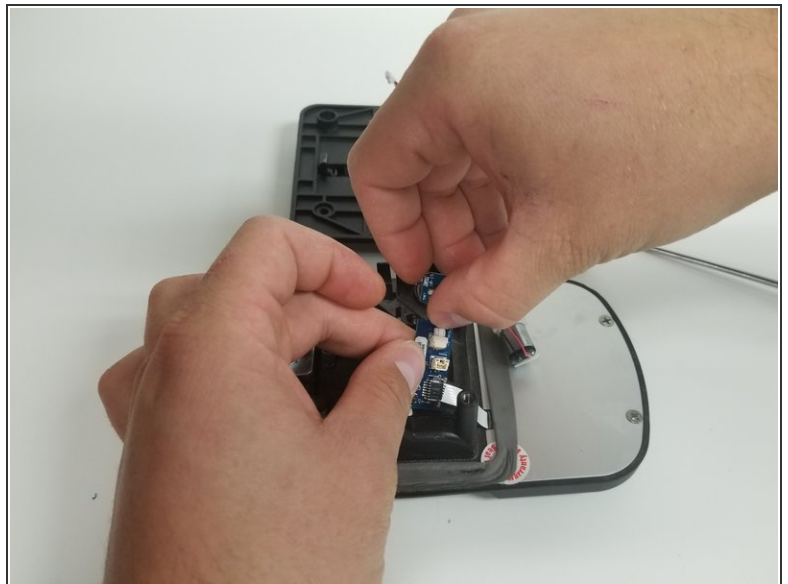
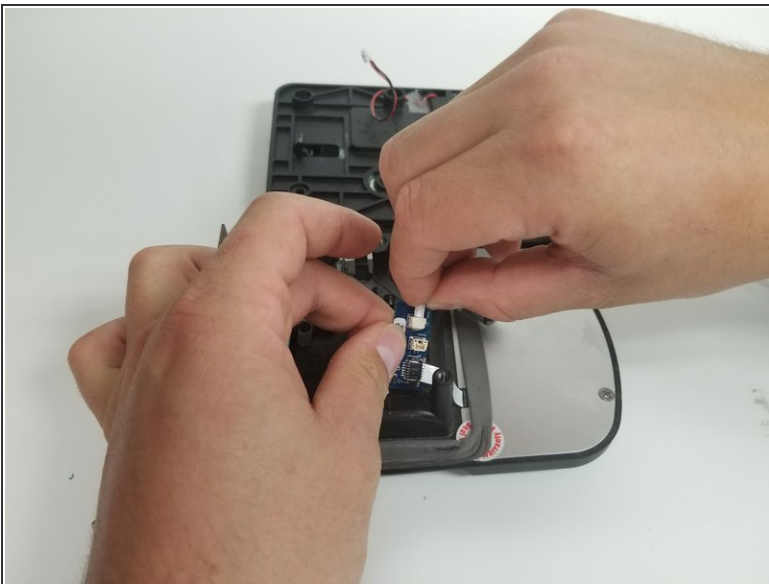
- Now that the connector is unattached, one can take the actuator and properly dispose of it.

Step 13



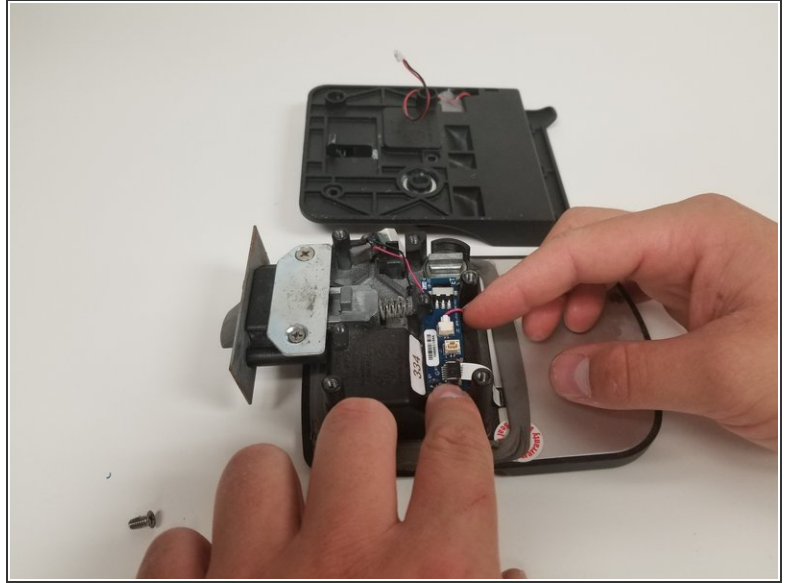
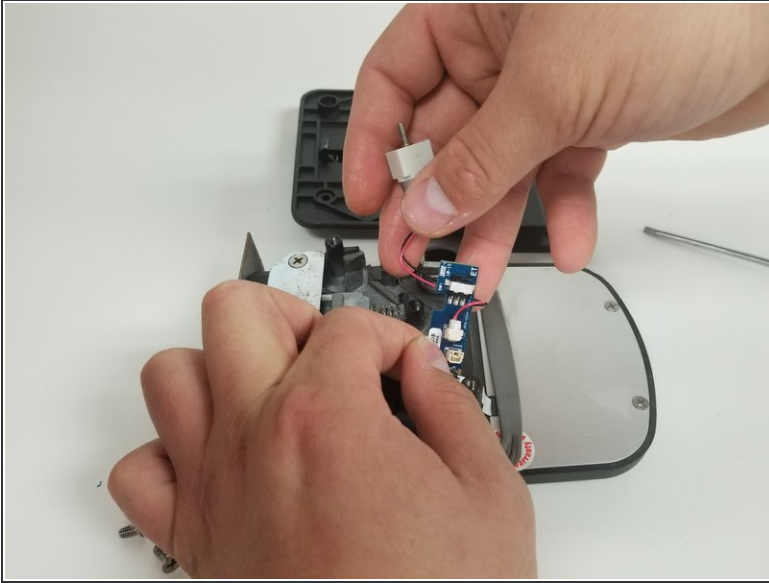
- You have now successfully taken off the old, broken actuator and properly disposed of it. Now it is time to put it all back together. Start by getting the new actuator.

Step 14



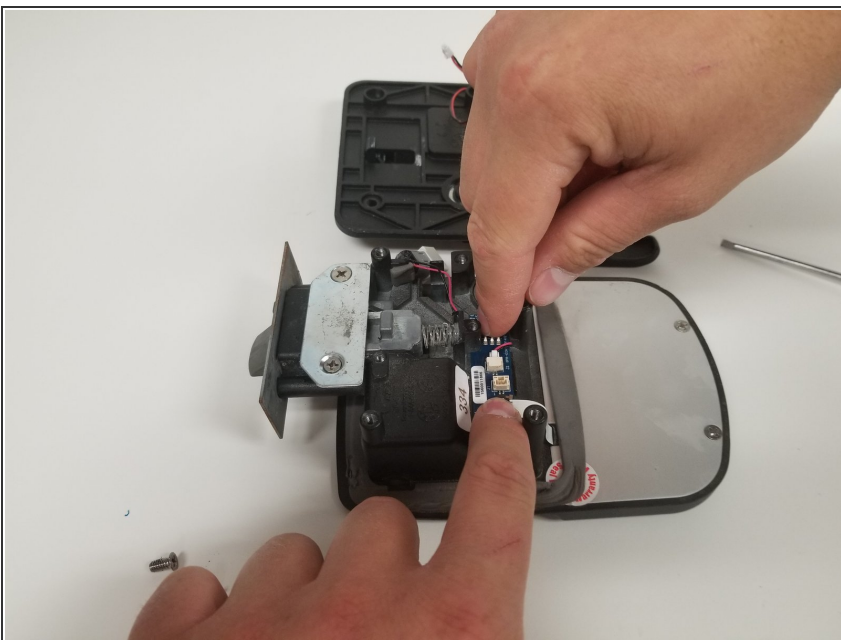
- Connect the actuator to the circuit board. Line up the connection and gently push it into place.
- ⓘ This will be the same connector that the old actuator was unplugged from.
- ⓘ You should hear a CLICK, when the connector is properly connected.

Step 15



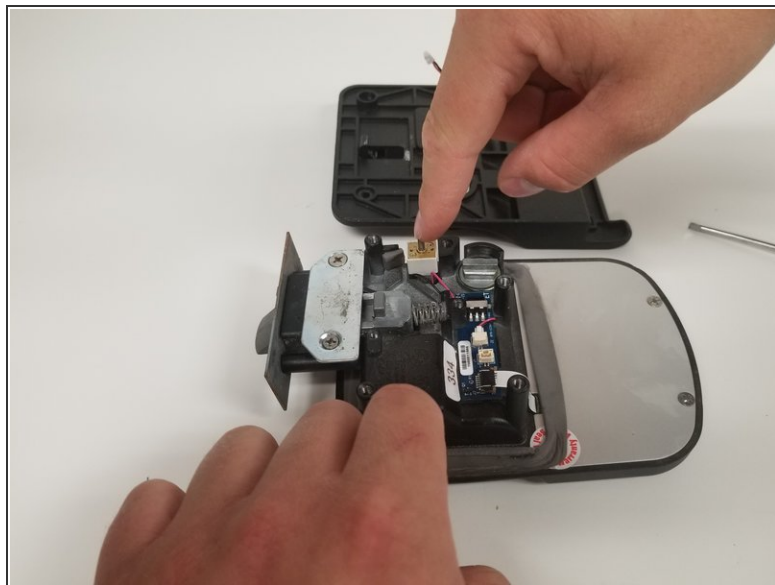
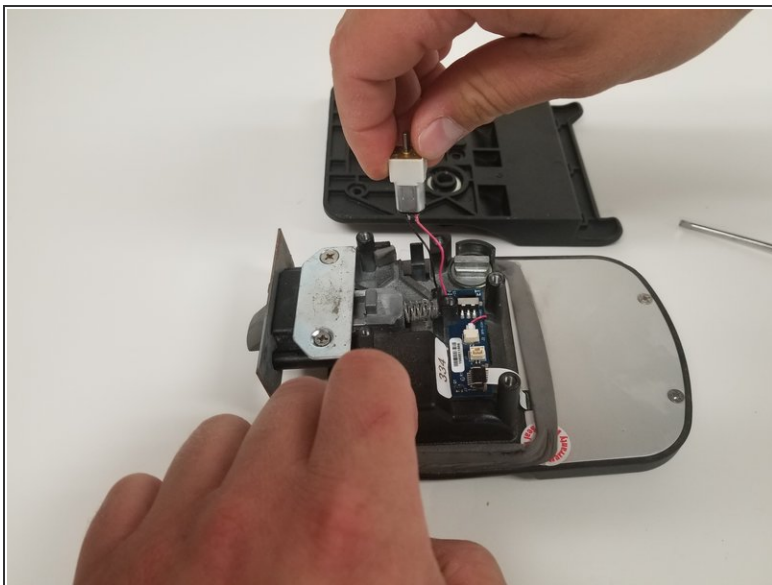
- Lift the circuit board up and feed the wire underneath the circuit board, where it was. This will prevent the wires from being damaged.
- ⓘ Make sure the wire is not place somewhere near a moving part or where it is pinched (i.e. pinched between the circuit board and the housing.)

Step 16



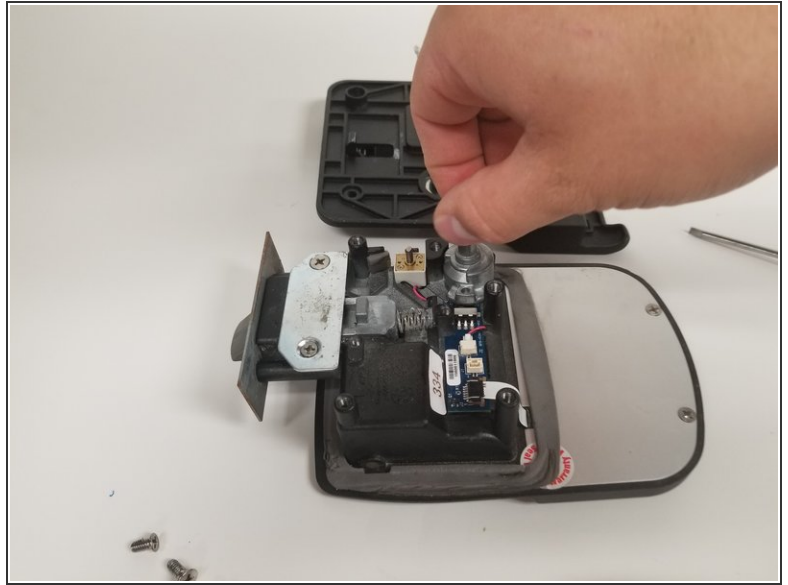
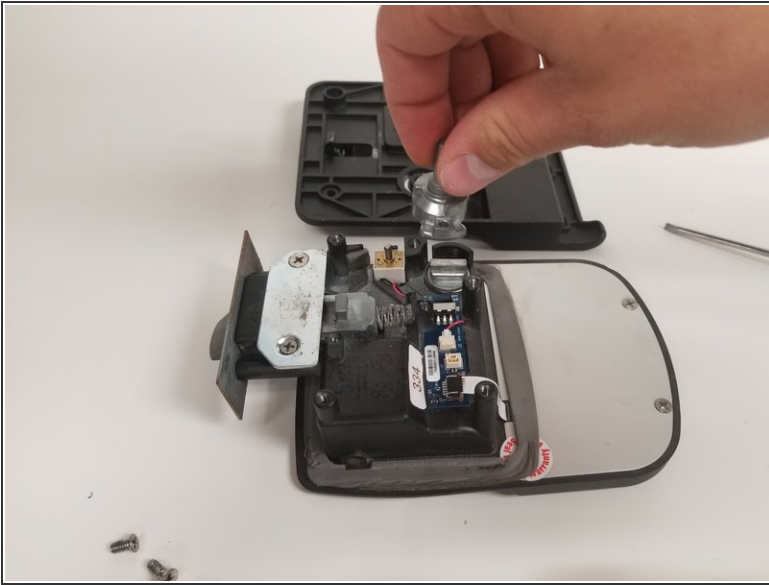
- Place the circuit board back in place and lightly push on it.
- ⓘ Depending on if the adhesive was broken you may need to add a little super glue to keep the circuit board from moving.
- ★ If superglue is being used, hold it in place for 30 seconds to ensure the bond is made.

Step 17



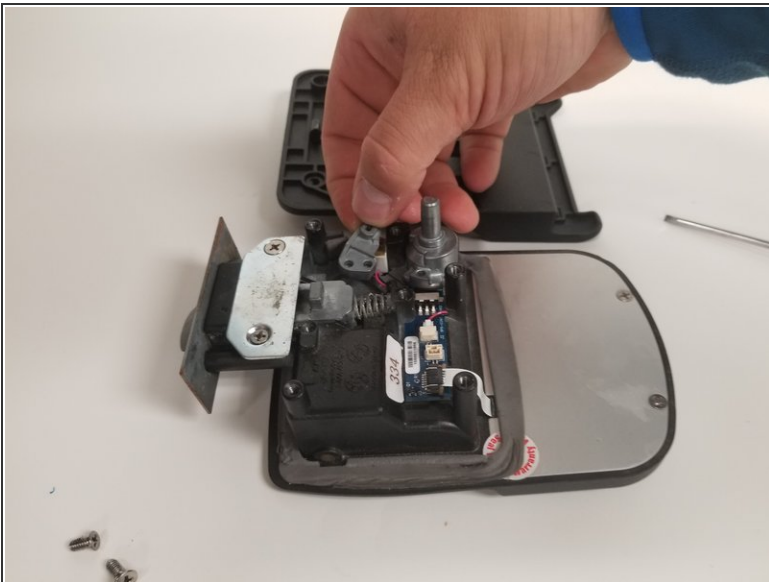
- Carefully line up and place the actuator in its place, where the old one was.
 - Gently and slowly push the actuator into place.
- i** Ensure that the wires are not being pinched or sharply bent, particularly at the bottom of the actuator.

Step 18



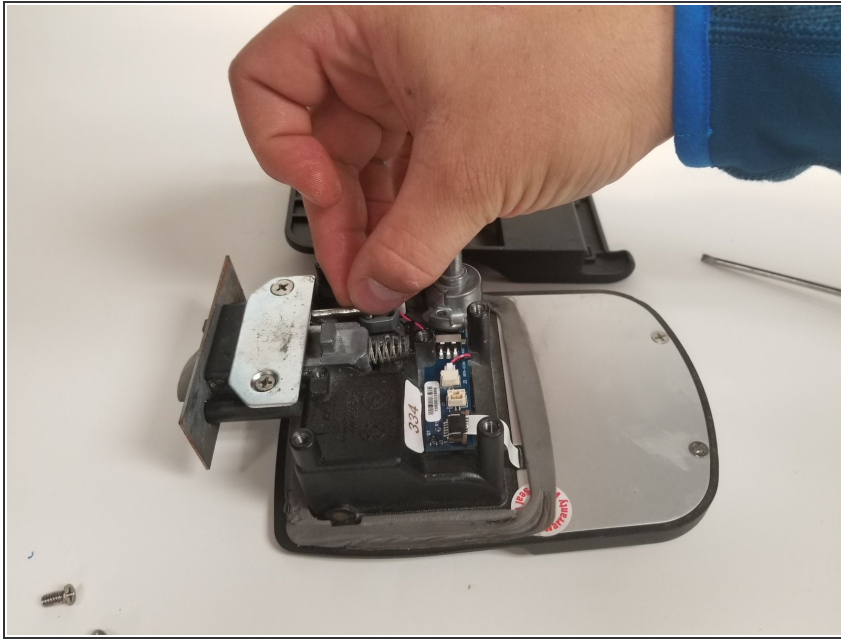
- Take the manual locking mechanism, align it and set it back in place.

Step 19



- Take the actuator mechanism, align it and set it in place.

Step 20



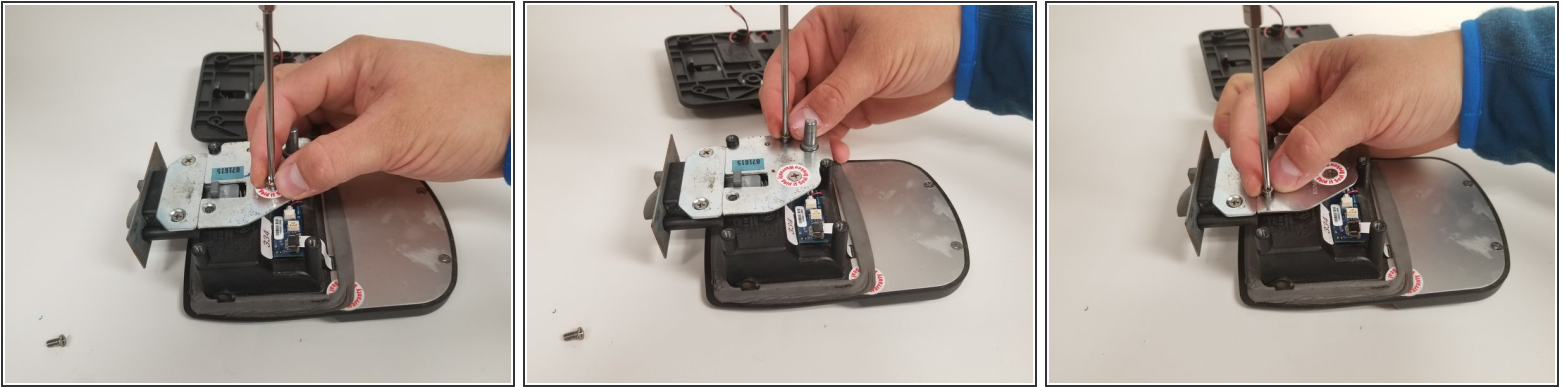
- Take the two metal links, the link between the deadbolt and actuator mechanism and the link between the actuator mechanism and the manual locking mechanism, align them and put them into place.

Step 21



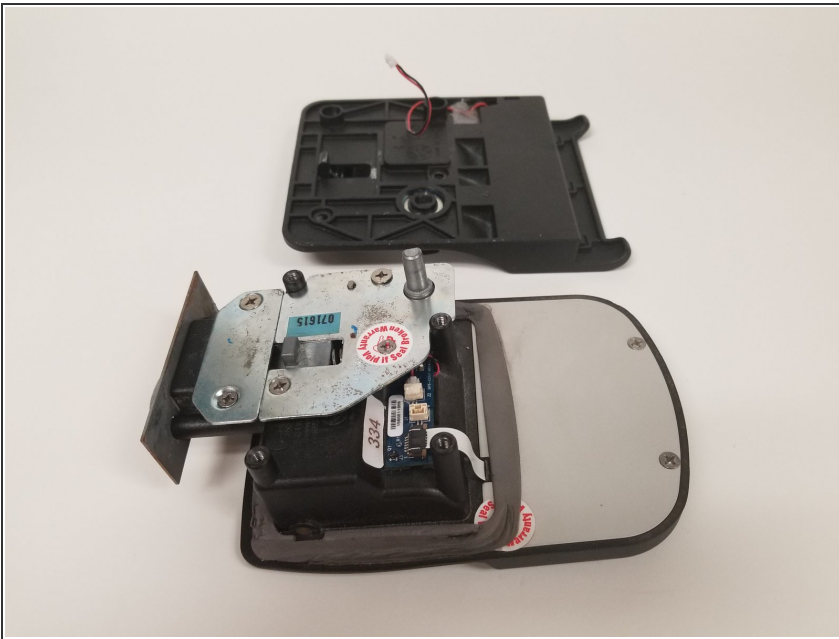
- Take the metal plate, align it and put it back in place.

Step 22



- Take the three screws, put them back in place, and tighten them with a Philips #2 screwdriver.
- ⓘ Make sure to tighten them snugly, but do not over tighten them to the point of stripping them.

Step 23



- Congratulations! The lock now has a new actuator and is ready to be put back on your trailer door.
- ★ Always ensure to keep the key with you in the event that the lock fails to lock or unlock again.

This is a easy process, one with little experience should not be worried, since there it no soldering or any hard tasks. Just be patient there are small parts.