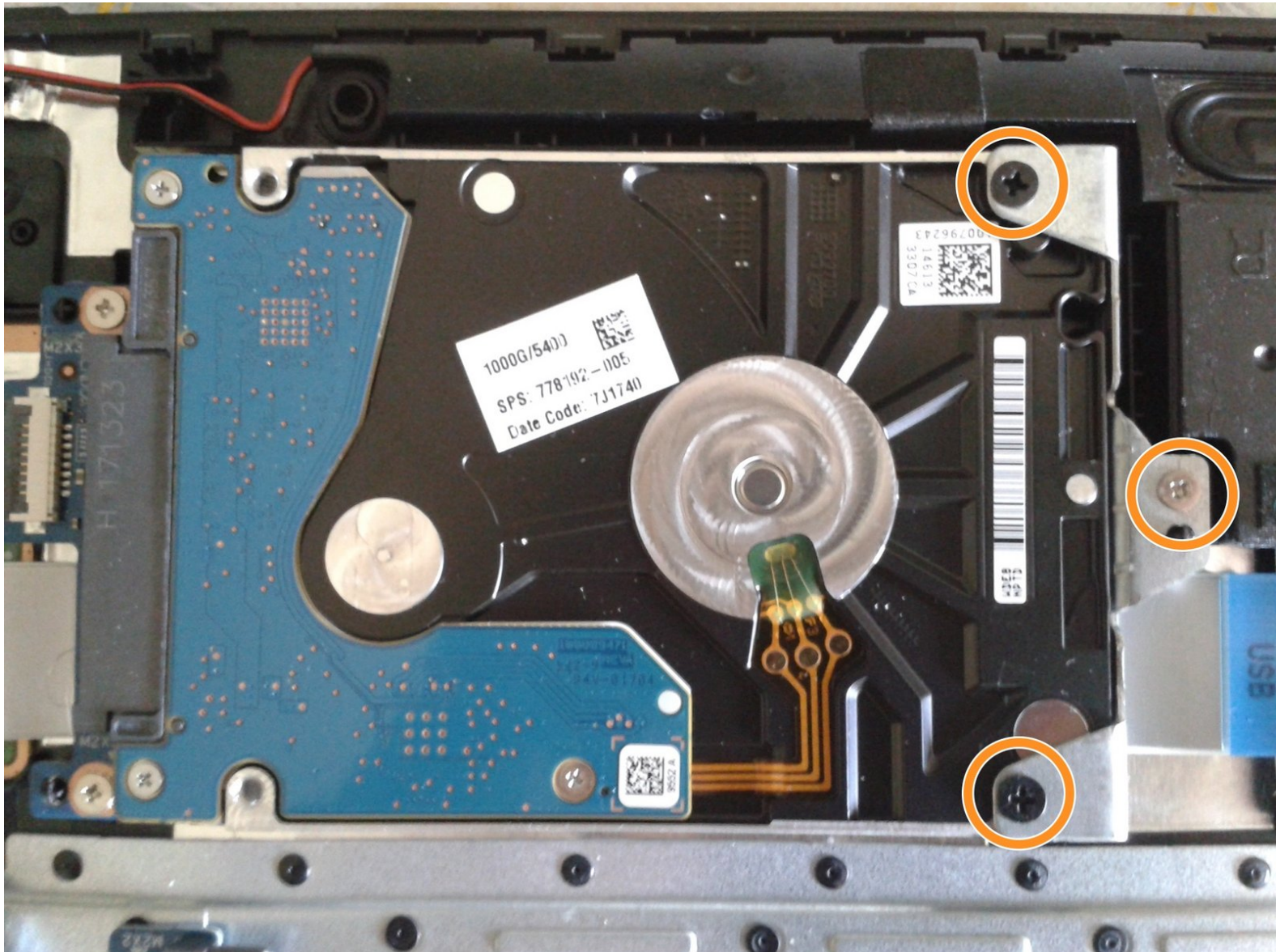




# Replacing the hard drive of the HP 15-bs015dx laptop

Replace the hard drive on your HP 15-bs015dx laptop

Written By: Marcos Mora



---

## INTRODUCTION

I am teaching you how to repair the hard drive of the HP 15-bs015dx laptop. You can consult a more complete disassembly guide on my profile

---



### TOOLS:

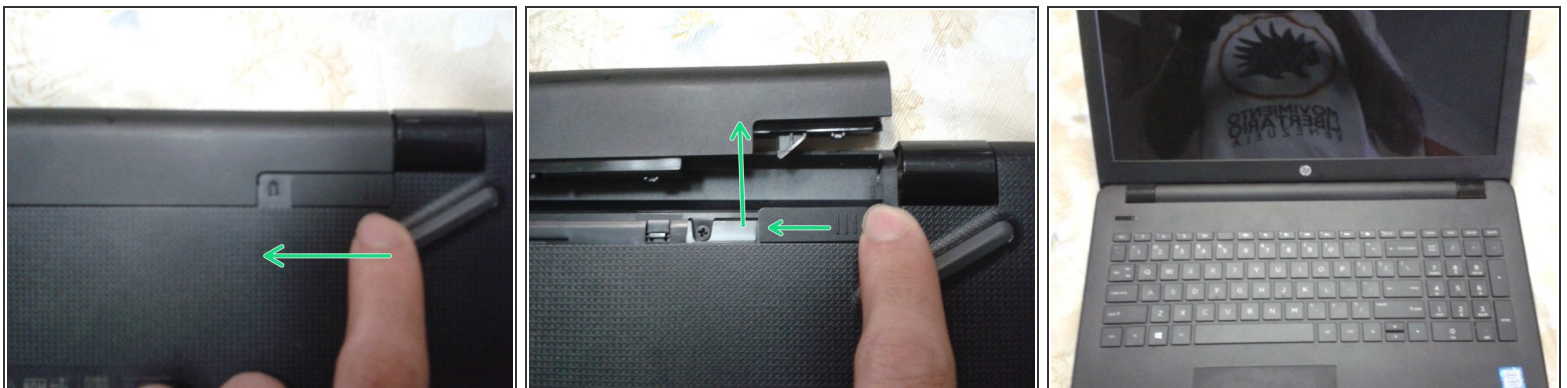
- [Phillips #0 Screwdriver](#) (1)
-

## Step 1 — Remove the Battery - Part 1



- Put the laptop facing down
- Move the left battery safe lock to the right

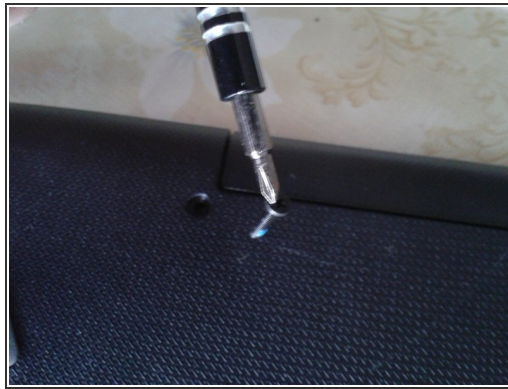
## Step 2 — Remove the Battery - Part 2



- Slide the right battery safe lock to the left
- This lock is harder than the previous, with this the battery should pop-up.

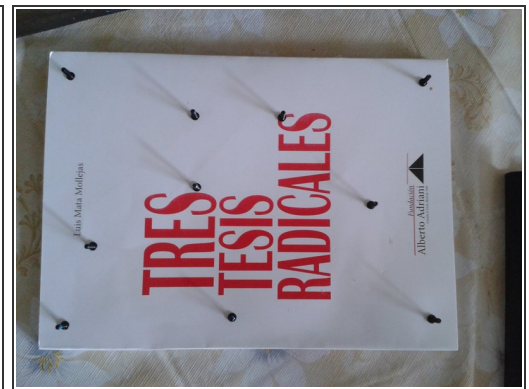


### Step 3 — Remove the 6 visibles screws



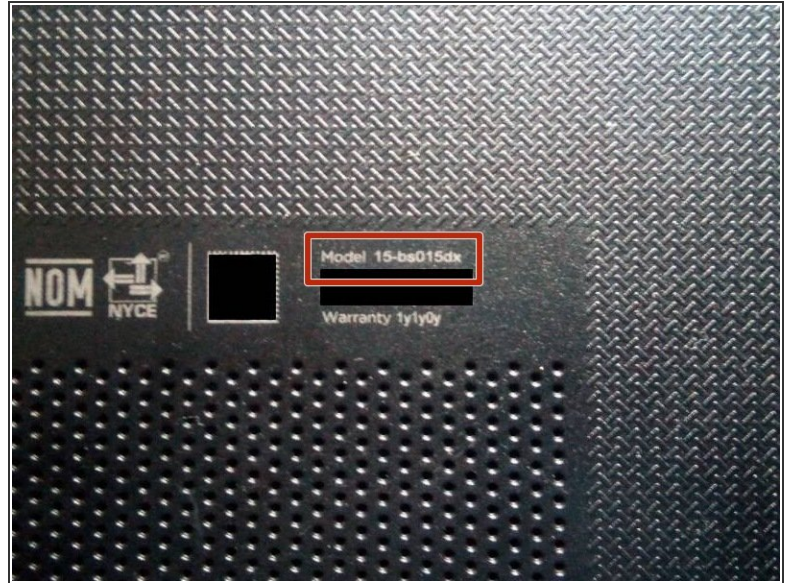
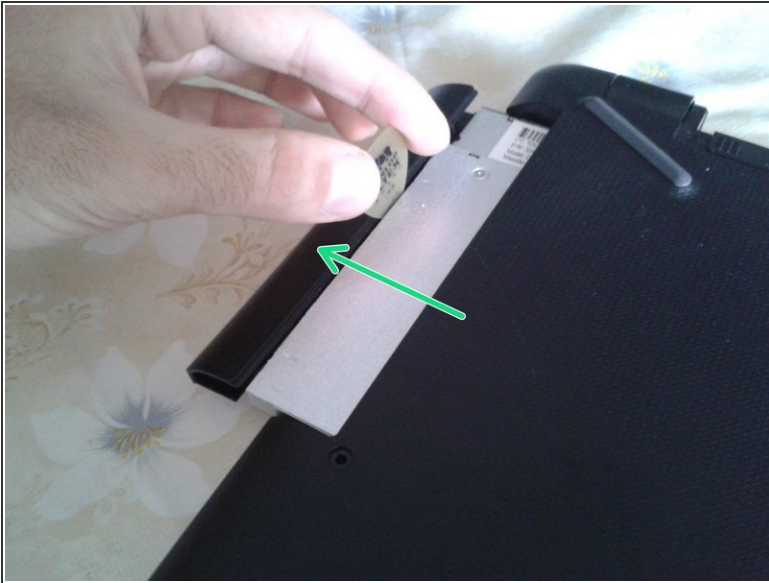
- Use a Philips 0 screwdriver

### Step 4 — Remove the 4 hidden screws



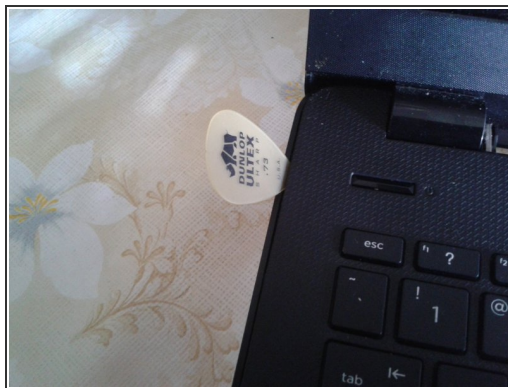
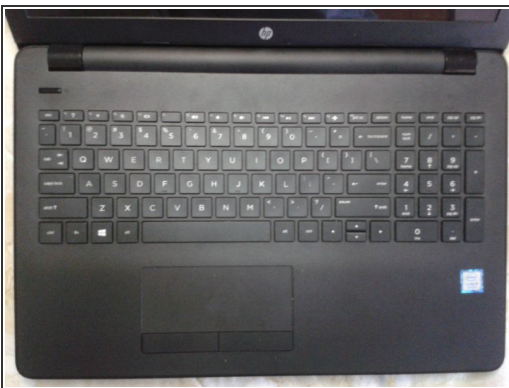
- Use a straw to take off just enough of the rubber feet of the 4 corners
- Use a Phillips screwdriver 0
- Replace each rubber foot in place after removing the screws
- You will have a total of 10 screws

## Step 5 — Remove the DVD unit



- It will go out easily with or without a straw
- You can check the model number

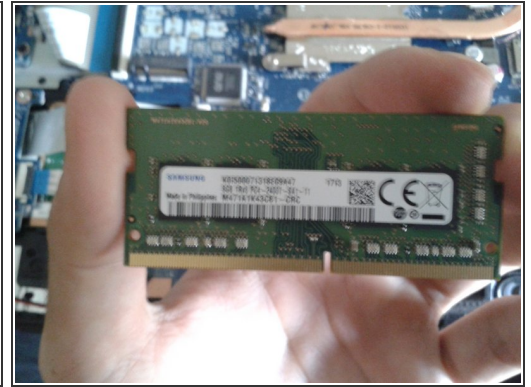
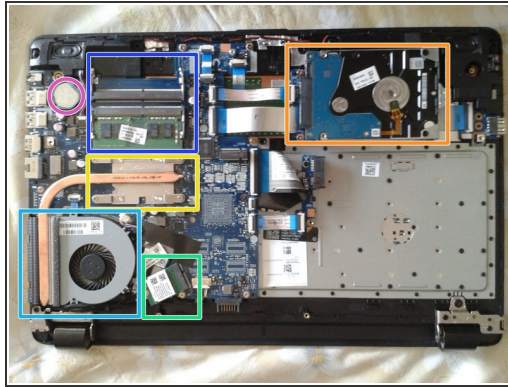
## Step 6 — Separate the pieces of the chassis part 1



- Flip the laptop and open it
- Use a plastic tool or a straw to separate the pieces of the chassis

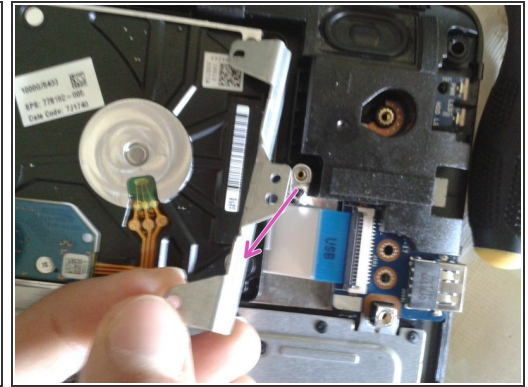
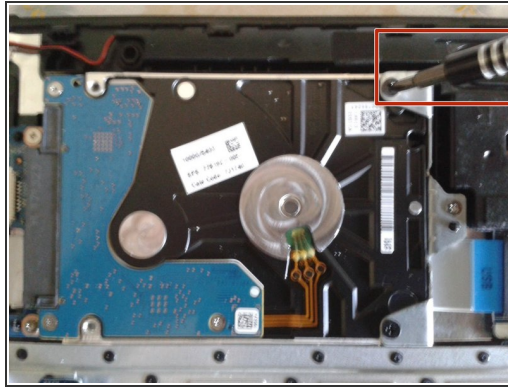
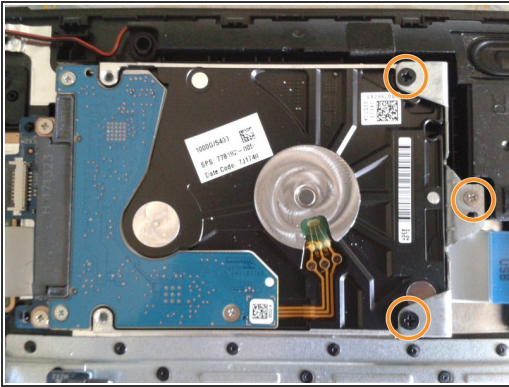


## Step 7 — Separate the pieces of the chassis part 2



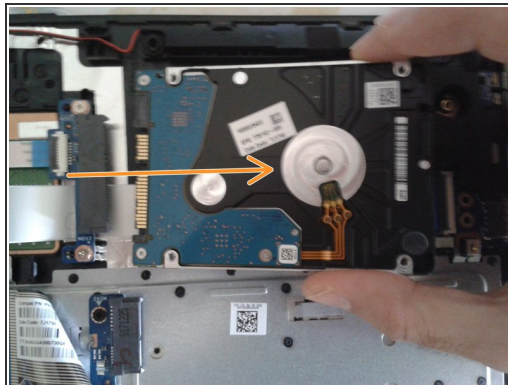
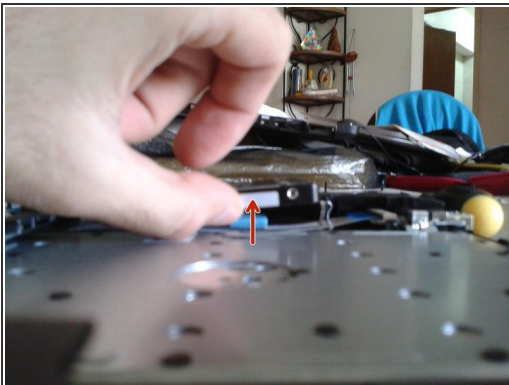
- Flip the laptop and separate the inferior cover of the chassis
- Hard Drive 2.5" SATA
- 2 RAM memory slots type DDR4 SO-DIMM
- CPU Intel 7th generation
- Active heat sink (fan)
- Wireless card
- Watch battery, 3V. CR2030

## Step 8 — Remove the three screws from the frame



- 3 screws
- Use a Phillips 0 screwdriver
- Remove the frame

## Step 9 — Remove the hard drive



- Tilt the hard drive up
- Disconnect the hard drive from its SATA port
- The hard drive is 7mm high. 1TB capacity.

For re-assembly of your device, follow these instructions in reverse.