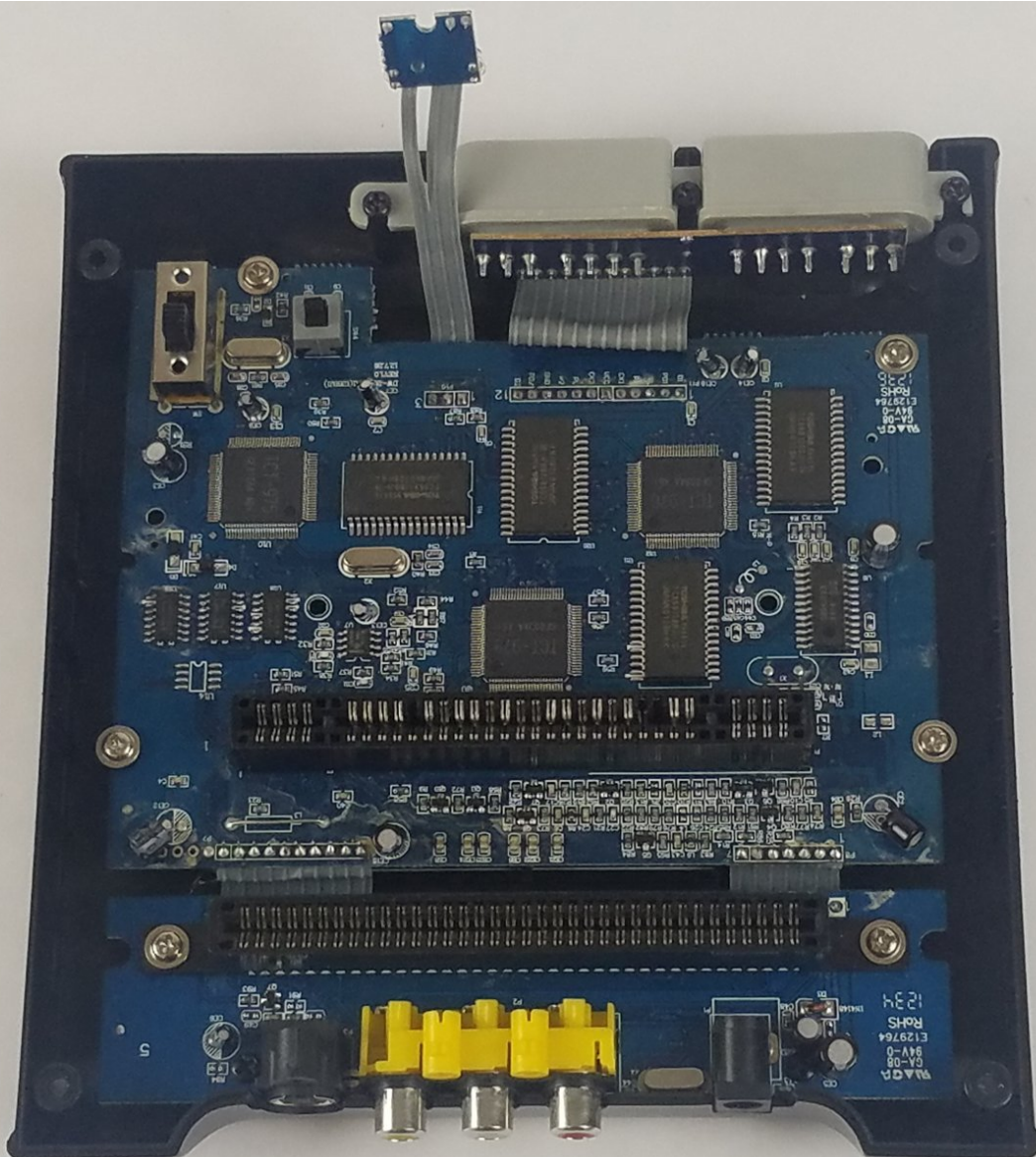




# Retro-Bit Retro Duo Circuit Board Replacement

Replacement of the Retro-Bit Retro Duo Game Console Circuit Board

Written By: Truong Vo



## INTRODUCTION

The circuit board is essential to the console's functions. Using Phillips #0 and Phillips #2 screwdrivers, you can replace it.



### TOOLS:

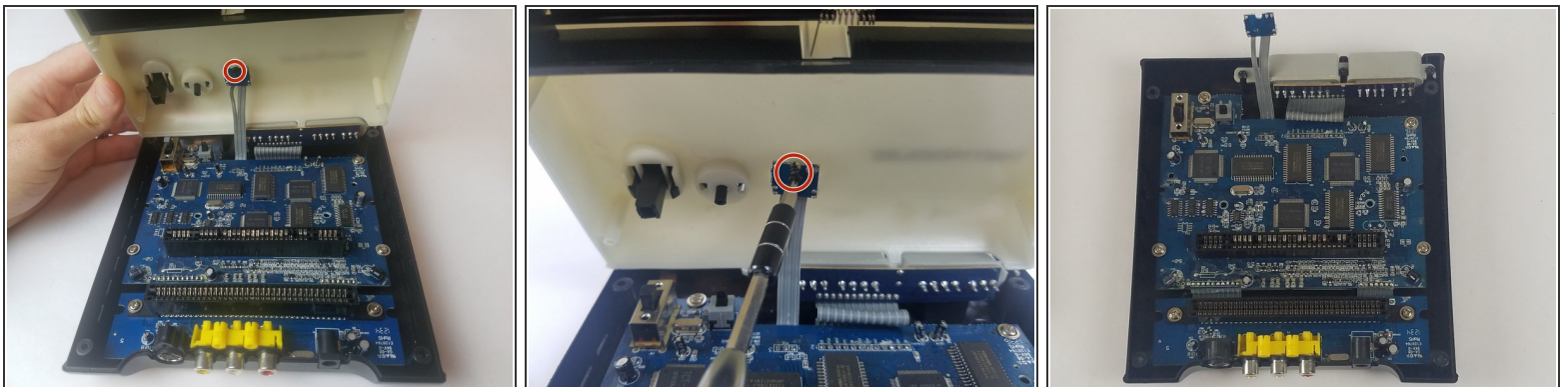
- [Phillips #0 Screwdriver](#) (1)
  - [Phillips #2 Screwdriver](#) (1)
-

## Step 1 — Circuit Board



- With the console on its top, remove the four 12 mm Phillips #2 screws.
  - ❗ There may be a sticker covering one or more of the screws. Simply remove the sticker before screw removal.
- Flip the console on its feet. Carefully lift the top casing from the back (where the AV/S and power ports are).
- ⚠ To avoid damage, do not remove the top casing completely. There is a small LED circuit board connected to the main circuit board.

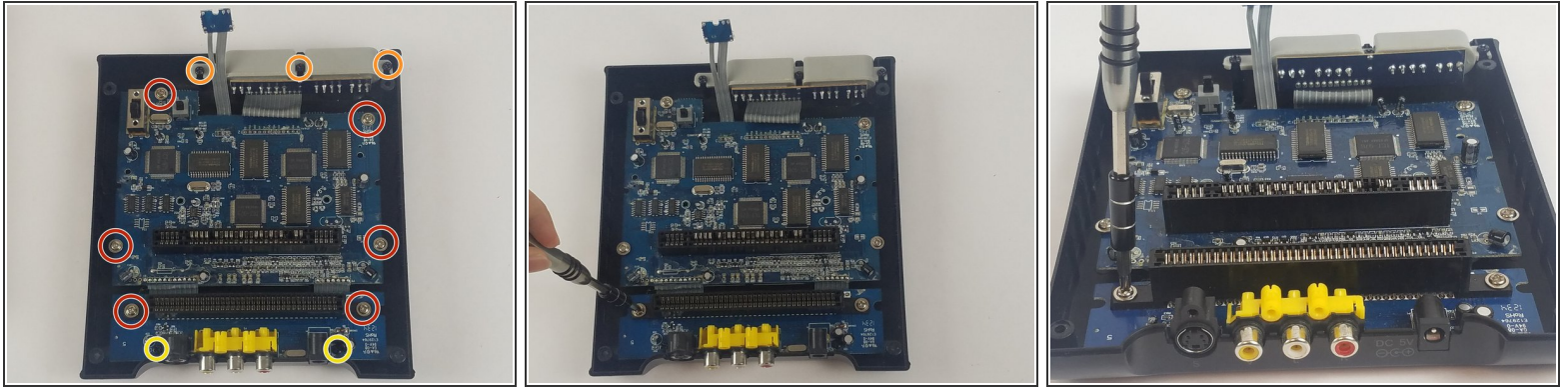
## Step 2



- Remove the one 6 mm Phillips #0 LED circuit board screw.
- Lift the top case and set aside.

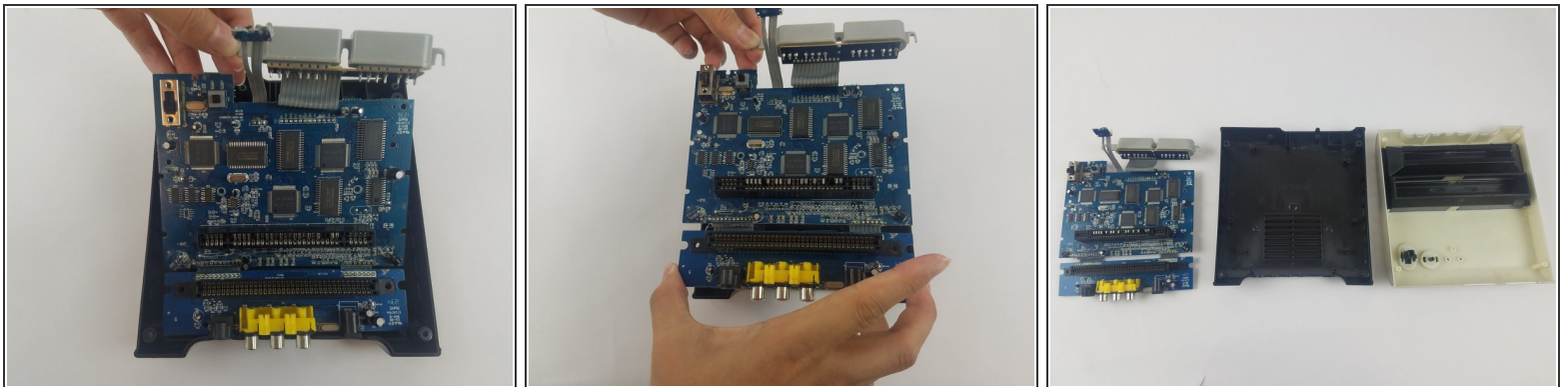



## Step 3



- Remove the 11 screws holding the circuit boards and ports in place.
  - Six 11 mm Phillips #2 holding the circuit boards.
  - Three 12 mm Phillips #2 screws holding the controller ports.
  - Two 7 mm Phillips #2 screws holding the back ports

## Step 4



- Carefully lift the circuit board while holding either the AV or controller ports. Alternatively, you can hold the circuit board on its edges.
- Make sure to lift the circuit board completely out of the bottom case.
-  To avoid damage, do not touch the top or bottom faces of the circuit board.

To reassemble your device, follow these instructions in reverse order.

This document was generated on 2019-09-18 09:29:50 PM (MST).

