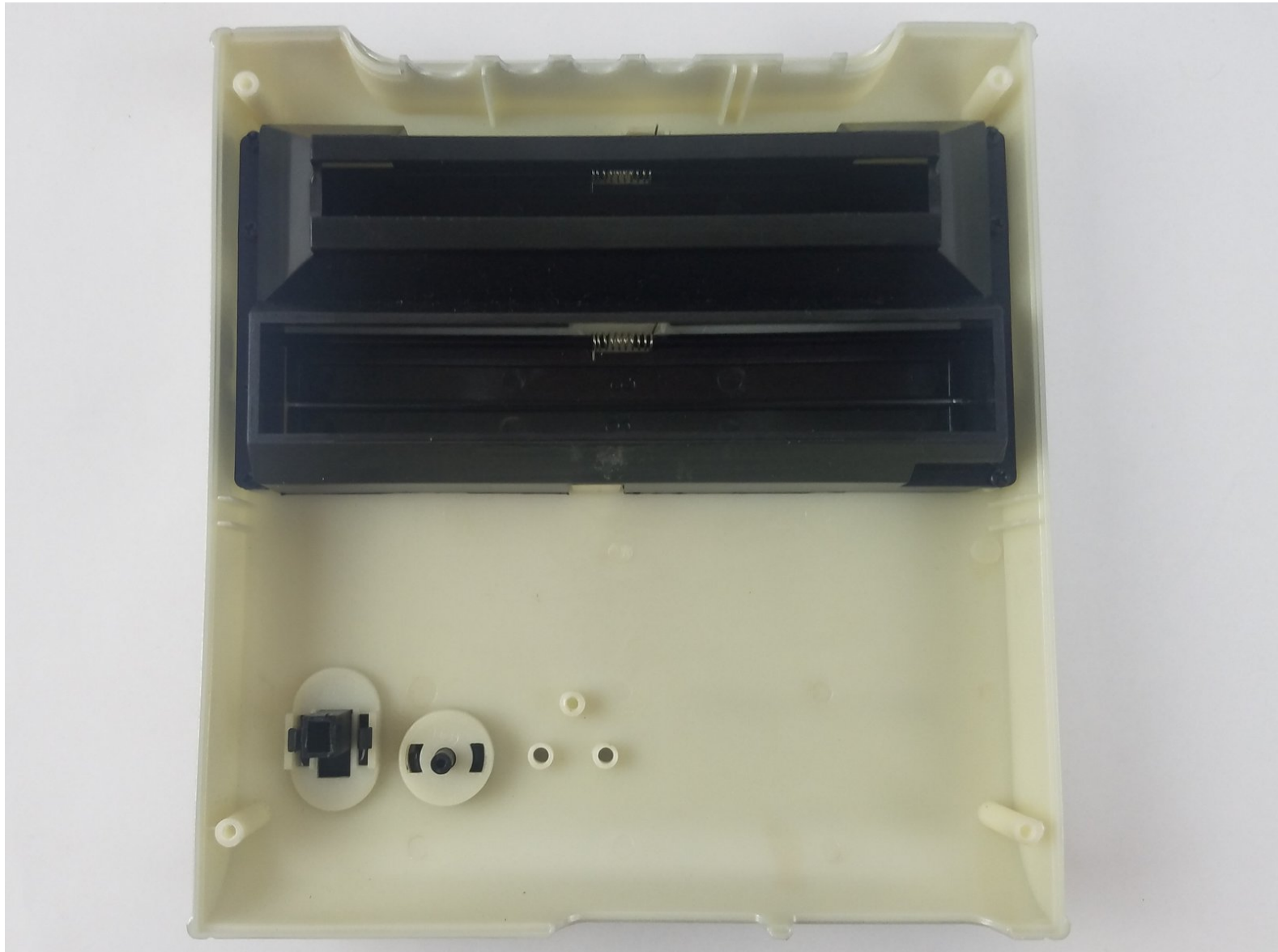




Retro-Bit Retro Duo Reset Button/Power Switch Replacement

Retro-Bit Retro Duo Game Console reset button and/or power switch replacement.

Written By: Truong Vo



INTRODUCTION

If the reset button and/or power switch get stuck or physically broken, they can be replaced using Phillips #0 and #2 screwdrivers.

TOOLS:

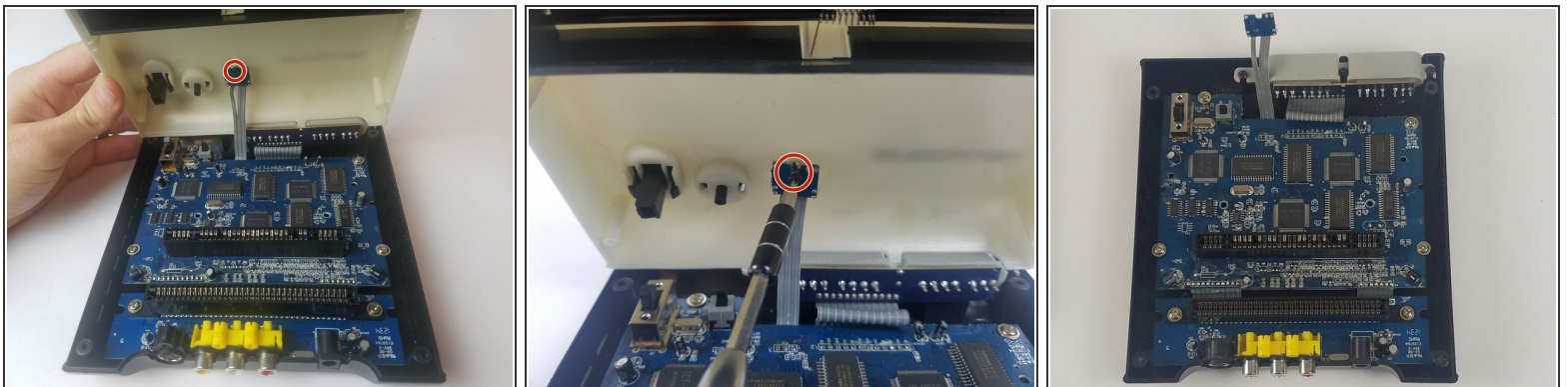
- [Phillips #0 Screwdriver](#) (1)
 - [Phillips #2 Screwdriver](#) (1)
 - [Precision Tweezers Set](#) (1)
-

Step 1 — Reset Button/Power Switch



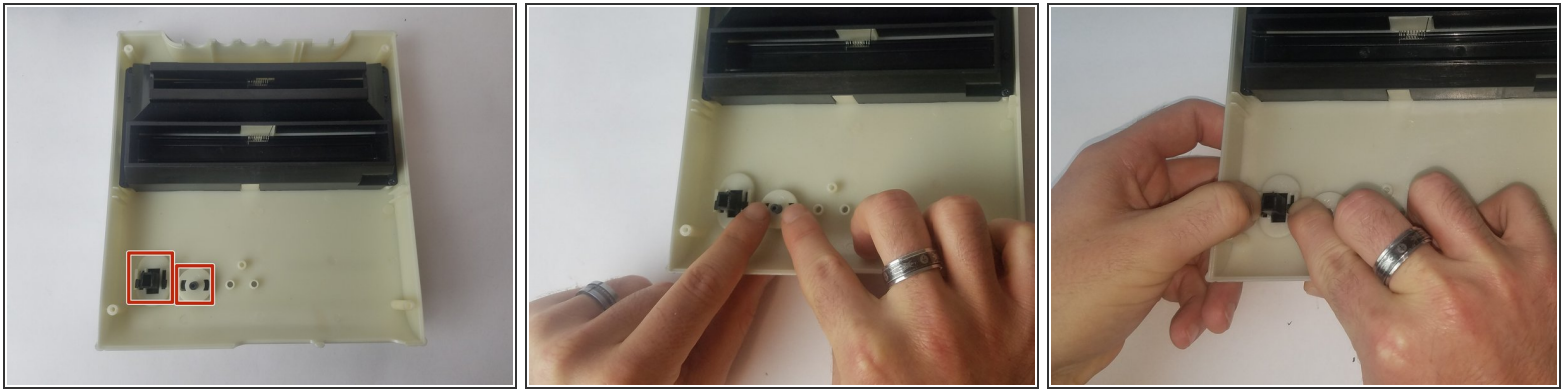
- With the console on its top. Remove the four 12 mm Phillips #2 screws.
 - ⓘ There may be a sticker covering one, or more, of the screws. Simply remove the it before the screws.
- Flip the console on its feet and carefully lift the top casing from the back (where the AV/S and power ports are).
- ⚠ To avoid damage, do not completely remove the top case. There is a small circuit board--which houses two LEDs-- connected to the main circuit board.

Step 2



- Remove the one 6 mm Phillips #0 screw.
- Lift the top case.
- ⓘ This step allows easy button access and prevents accidental damage.

Step 3



- Using your fingers (or precision tweezers), carefully pinch the button tabs and push through to the other side.
- ⓘ Make sure you pinch both tabs simultaneously, or the button will not pop out.

To reassemble your device, follow these instructions in reverse order.

If the problem persists after the buttons are replaced, it may be a circuit board issue. If so, please visit our guide for circuit board replacement at [Retro-Bit Retro Duo Circuit Board Replacement](#)