



# Reverse Applique Patch

Patch your jeans with a reverse applique.

Written By: Brittany McCrigler





---

## INTRODUCTION

Patch your jeans with a reverse applique. This technique is great for holes that have a large chunk of cloth missing. You can cut any shape and use any color fabric for the patch, so long as it is heavy-weight fabric.

For replacement parts or further assistance, contact [Patagonia Customer Service](#).

---

### TOOLS:

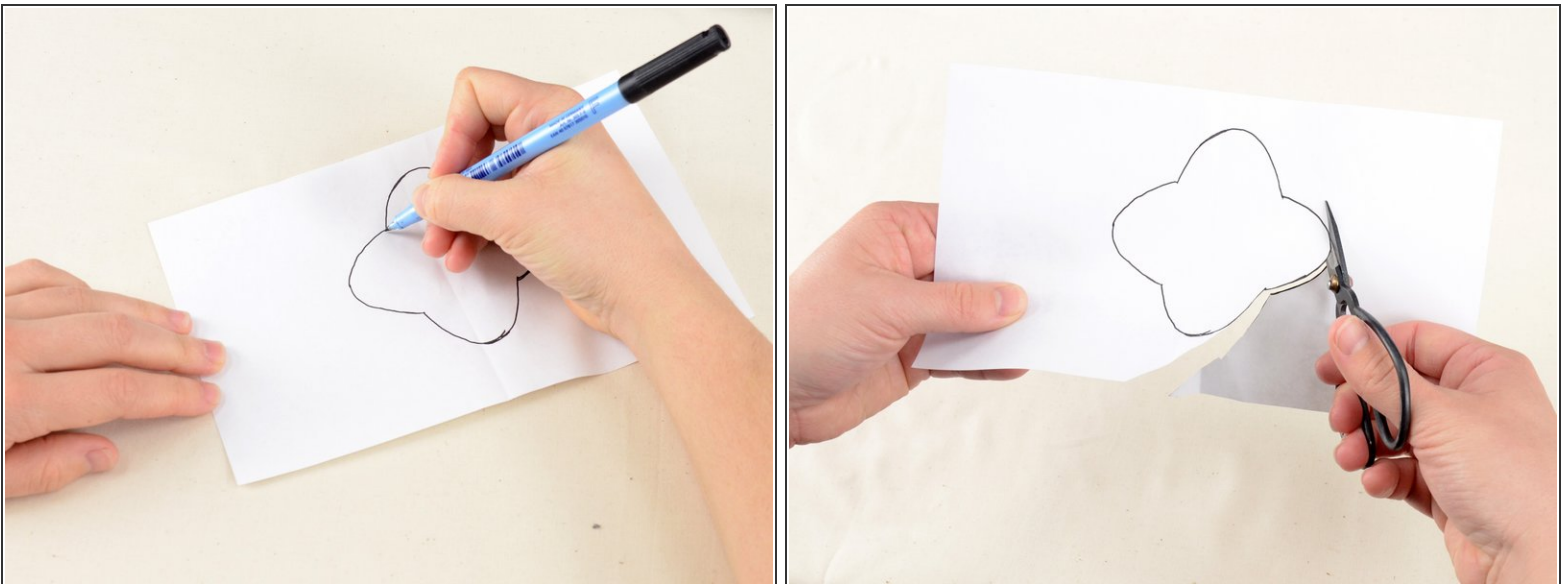
- [Sewing Machine](#) (1)
  - [Utility Scissors](#) (1)
  - [Measuring Tape](#) (1)
-

## Step 1 — Reverse Applique Patch



- Examine the damage. Clip any long threads, and remove any debris from the hole.
- Measure the damaged area.
  - In our case it looks to be 2" by 2".

## Step 2



- Draw any the shape you'd like your patch to be on a piece of paper. Be sure your design is at least 1/8" larger than the damaged area.
- Cut out your design.



### Step 3



- Lay the cutout of your design over the hole in the jeans to make sure that it is the correct size and looks how you want it to.

### Step 4




- Using a pencil, pen, or tailor's chalk, trace the design onto the jeans.



## Step 5



- Cut the design out of your jeans.

 Be sure to only cut one layer of denim, or you will cut through the back of your jeans and need two patches!

## Step 6



- Take the scrap of fabric you will use for a patch and insert it into the hole.

## Step 7



- Slide the pant leg with the patch over the arm of the sewing machine.
- ⓘ You may need to remove the sewing machine table for the pant to fit over the sewing machine.
- ⓘ If you are still having trouble getting the pant around the arm of the sewing machine, you can rip the side seam of the pant leg to allow room to sew.
- ⚠ Be sure that the pant leg is around the arm, and that you are not accidentally sewing the two layers of the pant leg together.



## Step 8



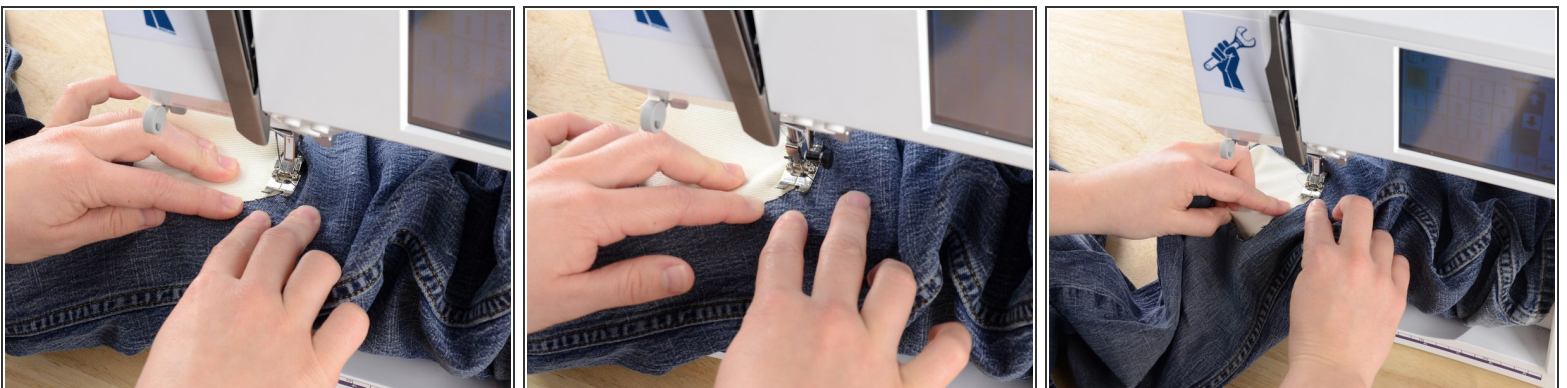
- Adjust the sewing machine for a zig-zag stitch.
- Set the stitch length to just under 1/2.

## Step 9



- Align the edge of the patch with the center of the pressor foot.
- Be sure that the patch is laying flat.
- Lower the pressor foot.
- Begin sewing the zig-zag stitch, following the edge of the hole so that the zig-zag stitch covers the area where the two fabrics meet.

## Step 10



- Sew all the way around the patch.
- Overlap the stitching at the end with the first two or three stitches.



## Step 11



- Lift the pressor foot and needle.
- Slide the pant leg off of the arm of the sewing machine.
- Clip any threads, and admire your work.