



Written By: Jessica Leyva





TOOLS:

- [Phillips #2 Screwdriver](#) (1)
-

Step 1 — Shell



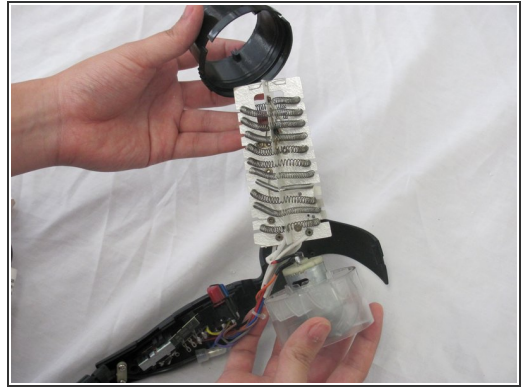
- ⚠ Before disassembly, make sure that the device is unplugged.
- Unscrew the two 17.83 mm black screws located on the handle.

Step 2



- Separate the shell from the main component.
- Make sure that the each piece is free from debris.

Step 3



- Continue to pull the components apart.
- ⓘ For reassembly, put the silver encasing on before the the black cover.

To reassemble your device, follow these instructions in reverse order.