



Revlon RVIR1008 Barrel Shell Replacement

This guide will instruct the user on how to replace the barrel shell on their iron.

Written By: Cassidy Madrigal



**TOOLS:**

- [6-in-1 Screwdriver](#) (1)

**PARTS:**

- [1.5" Curling Iron Barrel Shell](#) (1)

Step 1 — Barrel Shell



- Place curling iron on a flat surface along with required tools and barrel shell replacement.
- ⚠ Curling iron is extremely hot after use. Carefully unplug and let device sit and cool to room temperature before proceeding.

Step 2



- Using both hands, carefully detach both ends of the metal stand from the body of the iron by pulling away from the barrel.

Step 3



- Unscrew the 3mm screws from both sides of the barrel clip with a 3.0 flathead screwdriver to remove the clip from the barrel.
 - Set the two screws and barrel clip aside for reassembly.
- ⚠ Clip is prone to pop off from the body due to the weight of the spring. To prevent this, equally loosen each screw little by little.

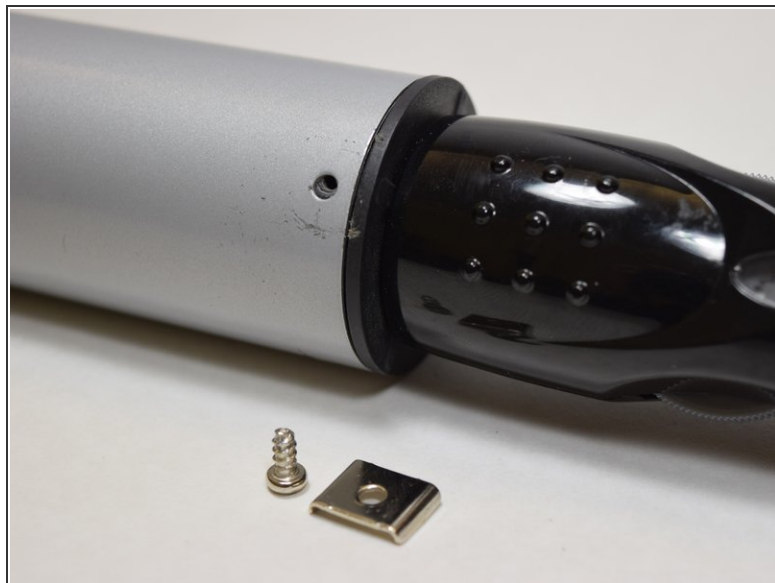
Step 4



- Squeeze both sides of the barrel clip spring and slide the component away from the barrel to remove.

⚠ Slowly decompress the spring after removal from the spring plate to avoid any hazards.

Step 5



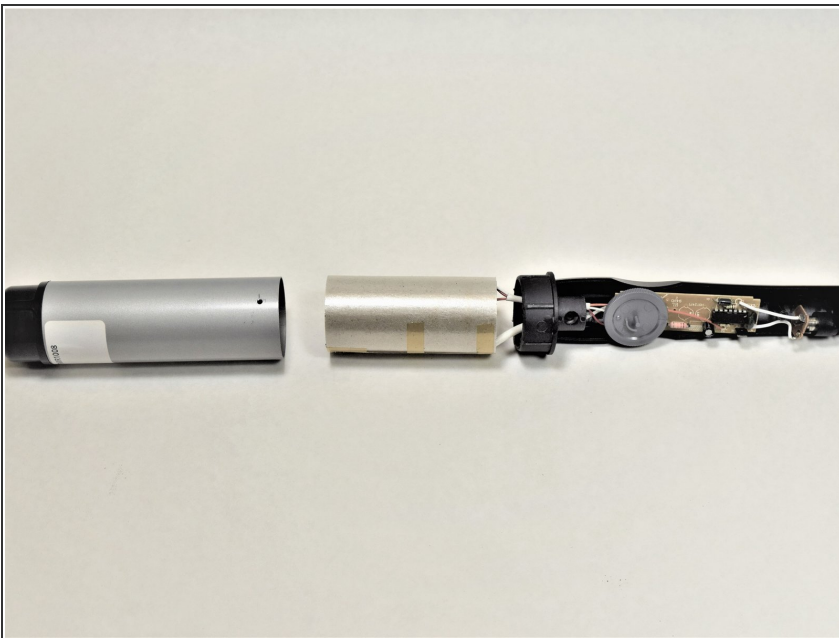
- Remove 3mm screw holding the metal spring plate in place with the 3.0 flathead screwdriver.
 - Place the screw and plate to the side for later reassembly.
- i** Removing the screw allows for removal of the barrel from the iron itself. Be sure not to pull the barrel.

Step 6



- Remove the two screws holding the plastic casing together using the 3.0 flathead screwdriver.
- Remove the front plastic cover from the main body.
- i* The plastic cover contains warnings and is located on the devices handle.
- i* Once completed, the internal parts of the iron will be exposed.
- Place the two screws and plastic cover to the side for later reassembly.

Step 7



- Remove the cylindrical barrel shell by sliding it away from the devices main heating element. wisdom here.
- Retrieve replacement barrel shell and slide it onto the devices main heating element.
- i* Be careful to grip the device firmly and precisely to avoid stripping away the internal components underneath the handle.

To reassemble your device, follow these instructions in reverse order.