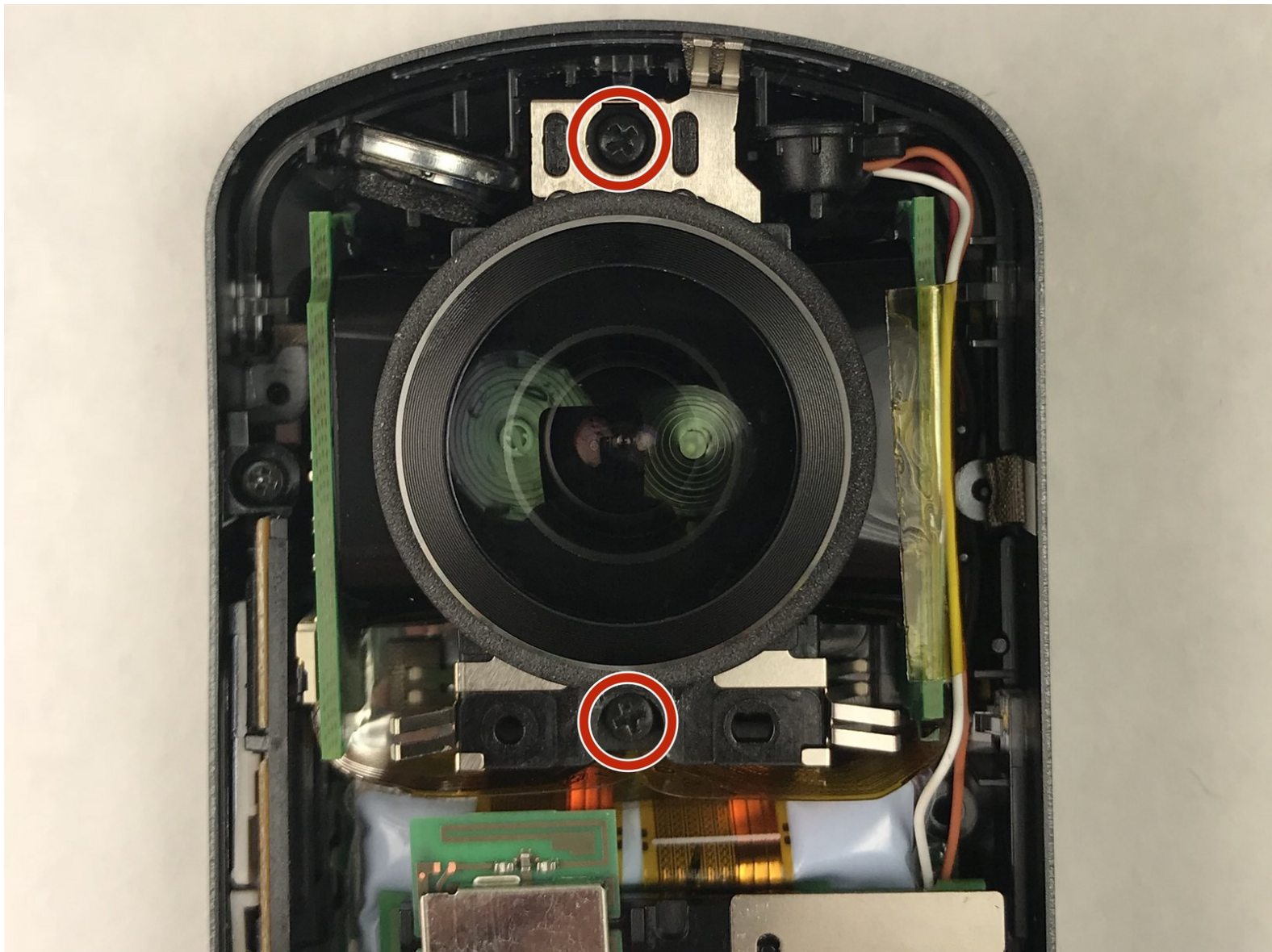




Ricoh Theta S Camera Assembly Replacement

Replace the camera assembly of your Ricoh Theta S Camera.

Written By: Bradley Sutton



INTRODUCTION

This guide will show how to replace the camera assembly for the Ricoh Theta S. Be aware that any replacement or disassembly of the original product may void the manufacturer warranty.



TOOLS:

- [Spudger](#) (1)
 - [Phillips #00 Screwdriver](#) (1)
-

Step 1 — Outer Case



- Wedge the spudger underneath the small plastic square located on the bottom of the device.
- Move the spudger to remove the plastic cover.

Step 2



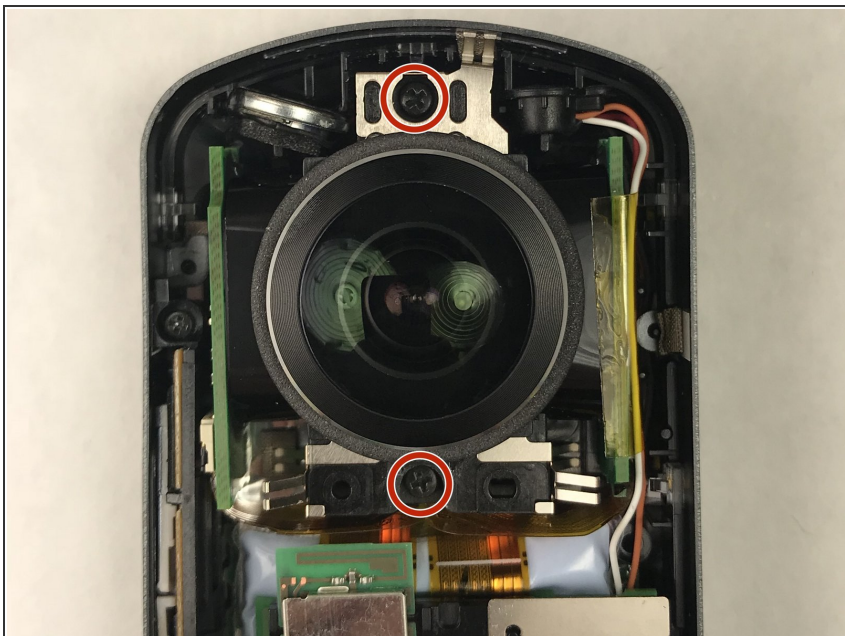
- Use a Phillips #00 screwdriver to remove the four 3-mm screws located on the bottom of the device.

Step 3



- Insert the plastic opening tool in between the panels shown.
- Apply pressure to unlatch the 9 spring clips located around the perimeter of the device.
- Lift the panel from the device.

Step 4 — Camera Assembly



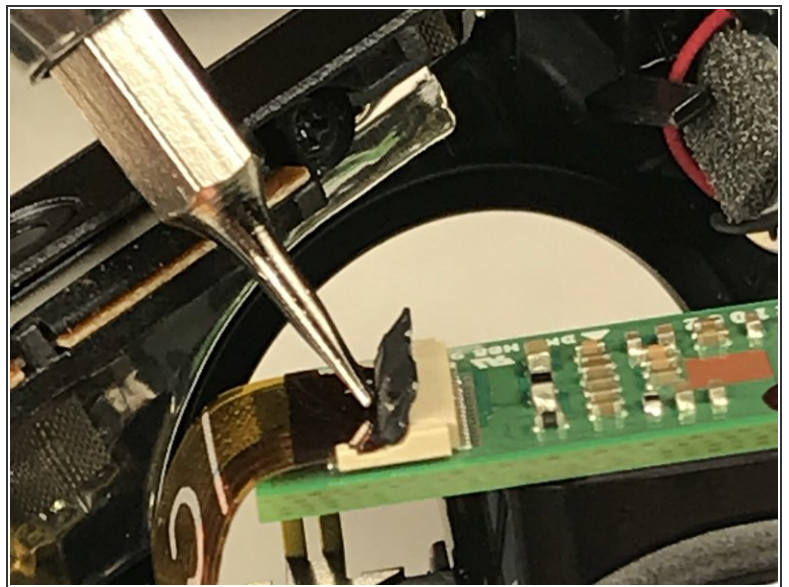
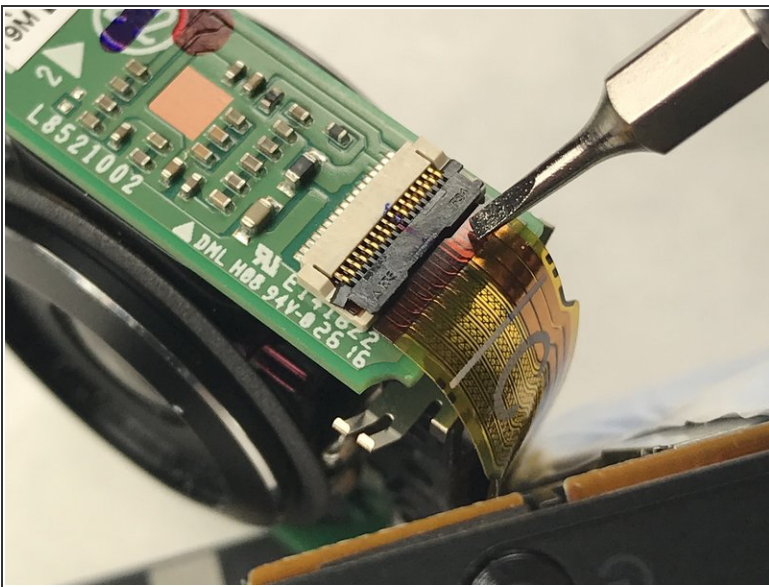
- Remove the two 3mm Phillips screws.

Step 5



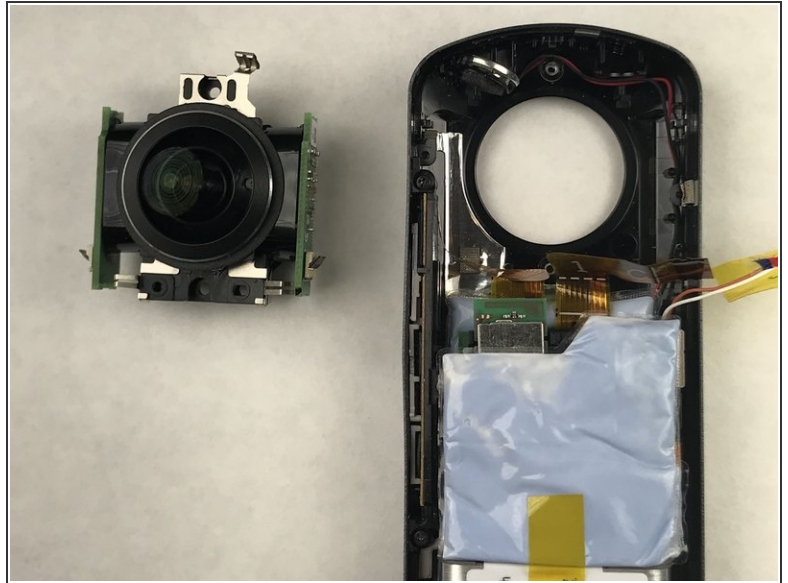
- Gently lift the camera assembly from the device until the ribbon cable connections are accessible.
- Peel back the piece of tape securing the microphone wire the the circuit board.

Step 6



- Find the two ribbon cable connectors located on each side of the device.
- Using a small, flat spudger, gently lift the black plastic piece of the connector.

Step 7



- Carefully detach the two ribbons cables from their connectors to remove the camera assembly.

To reassemble your device, follow these instructions in reverse order.