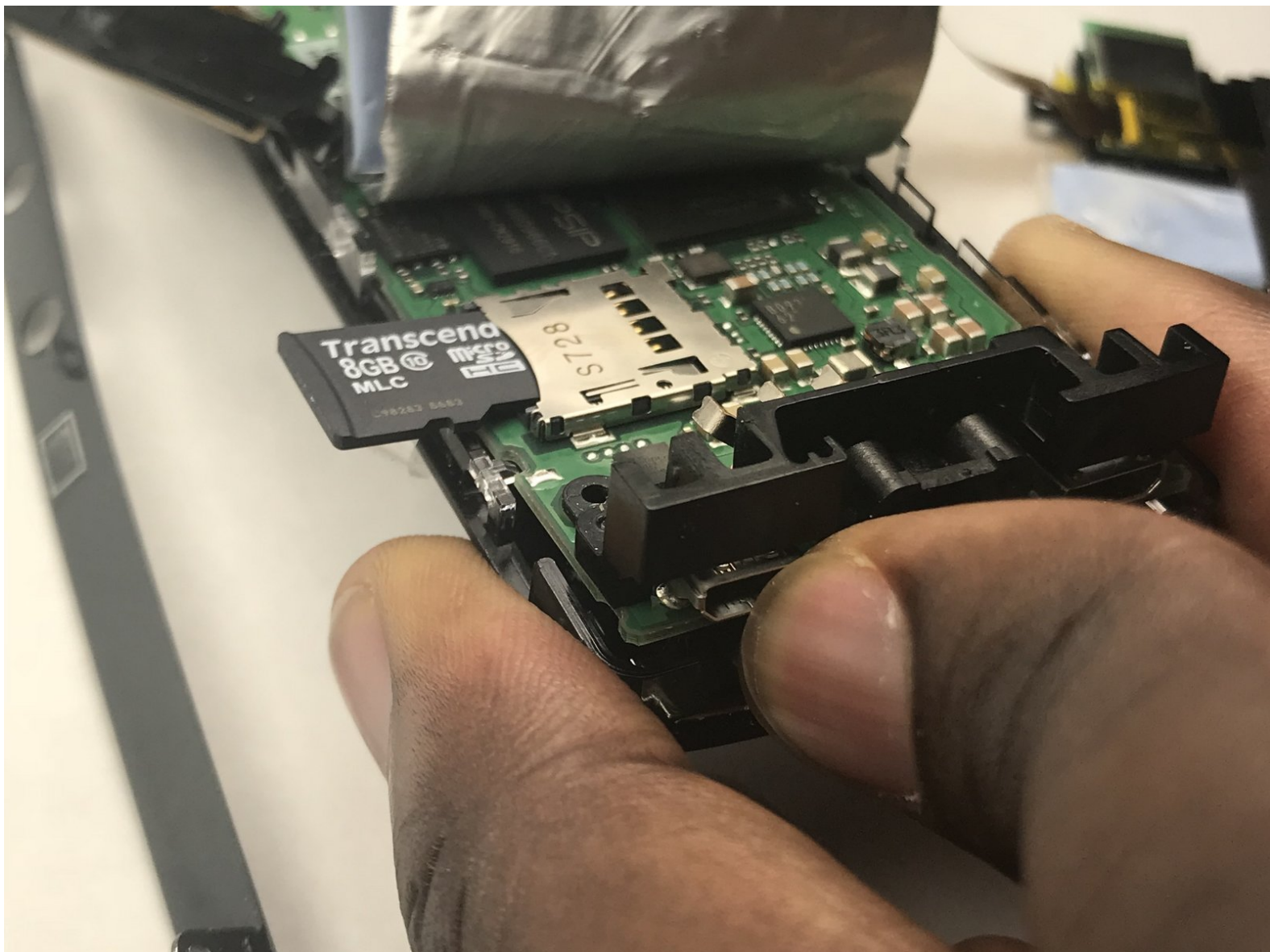




Ricoh Theta S Internal microSD Replacement

Replacement of the internal microSD card.

Written By: Bradley Sutton



INTRODUCTION

This guide will show the steps required to replace the internal microSD memory card inside the Ricoh Theta S. Be aware that any replacement or disassembly of the original product may void the manufacturer warranty.



TOOLS:

- [Spudger](#) (1)
- [Phillips #00 Screwdriver](#) (1)



PARTS:

- [SanDisk microSD Card](#) (1)

Step 1 — Outer Case



- Wedge the spudger underneath the small plastic square located on the bottom of the device.
- Move the spudger to remove the plastic cover.

Step 2



- Use a Phillips #00 screwdriver to remove the four 3-mm screws located on the bottom of the device.

Step 3



- Insert the plastic opening tool in between the panels shown.
- Apply pressure to unlatch the 9 spring clips located around the perimeter of the device.
- Lift the panel from the device.

Step 4 — Battery



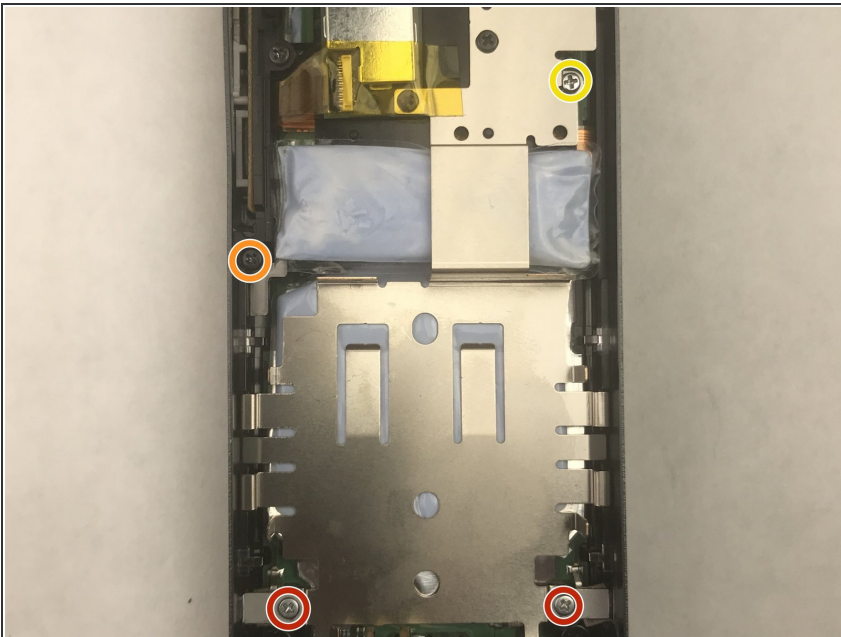
- The battery is located near the bottom of the device.
- Flip the plastic containing thermal compound over so it is resting on top of the battery.

Step 5



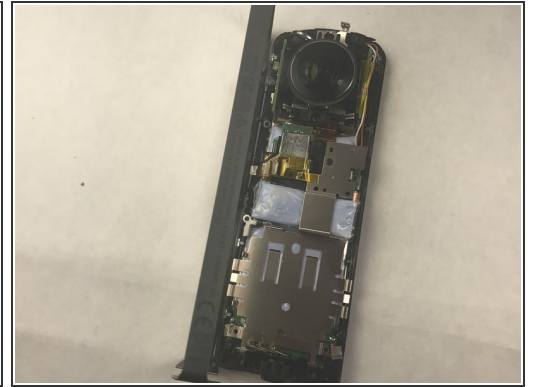
- Lift the battery out of the device, beginning with the end closest to the camera.

Step 6 — Internal microSD



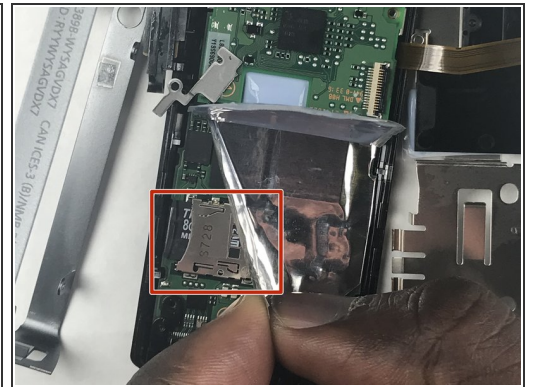
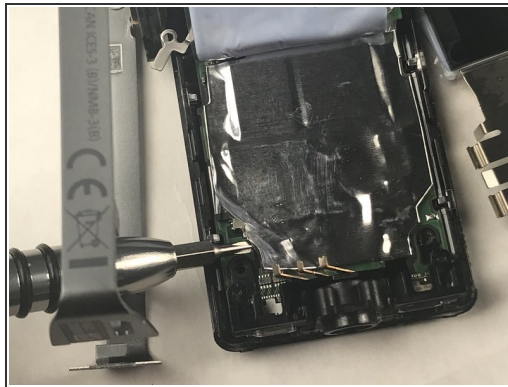
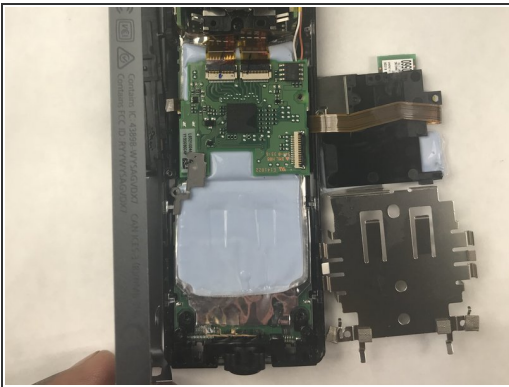
- Remove the two 2mm Phillips screws.
- Remove the black 2mm Phillips screw.
- Remove the 1.5mm Phillips screw.

Step 7



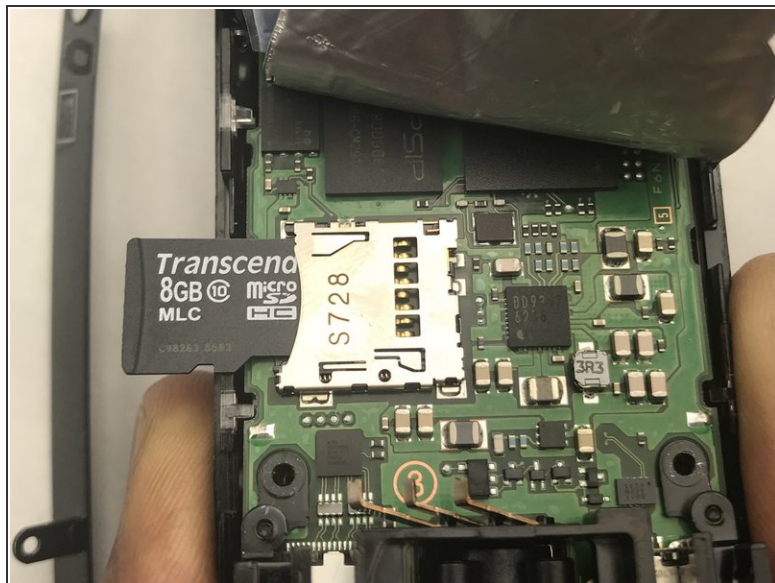
- Carefully pull the side casing away from the camera.

Step 8



- Lift up the plastic containing thermal compound to reveal the thermal tape covering the motherboard.
- Peel back the lower left corner of the thermal tape to reveal the microSD slot located on the motherboard.

Step 9



- Push the microSD card inward, from the side.
- Once a click is heard, pull the screwdriver away to eject the microSD card from the slot.

To reassemble your device, follow these instructions in reverse order.