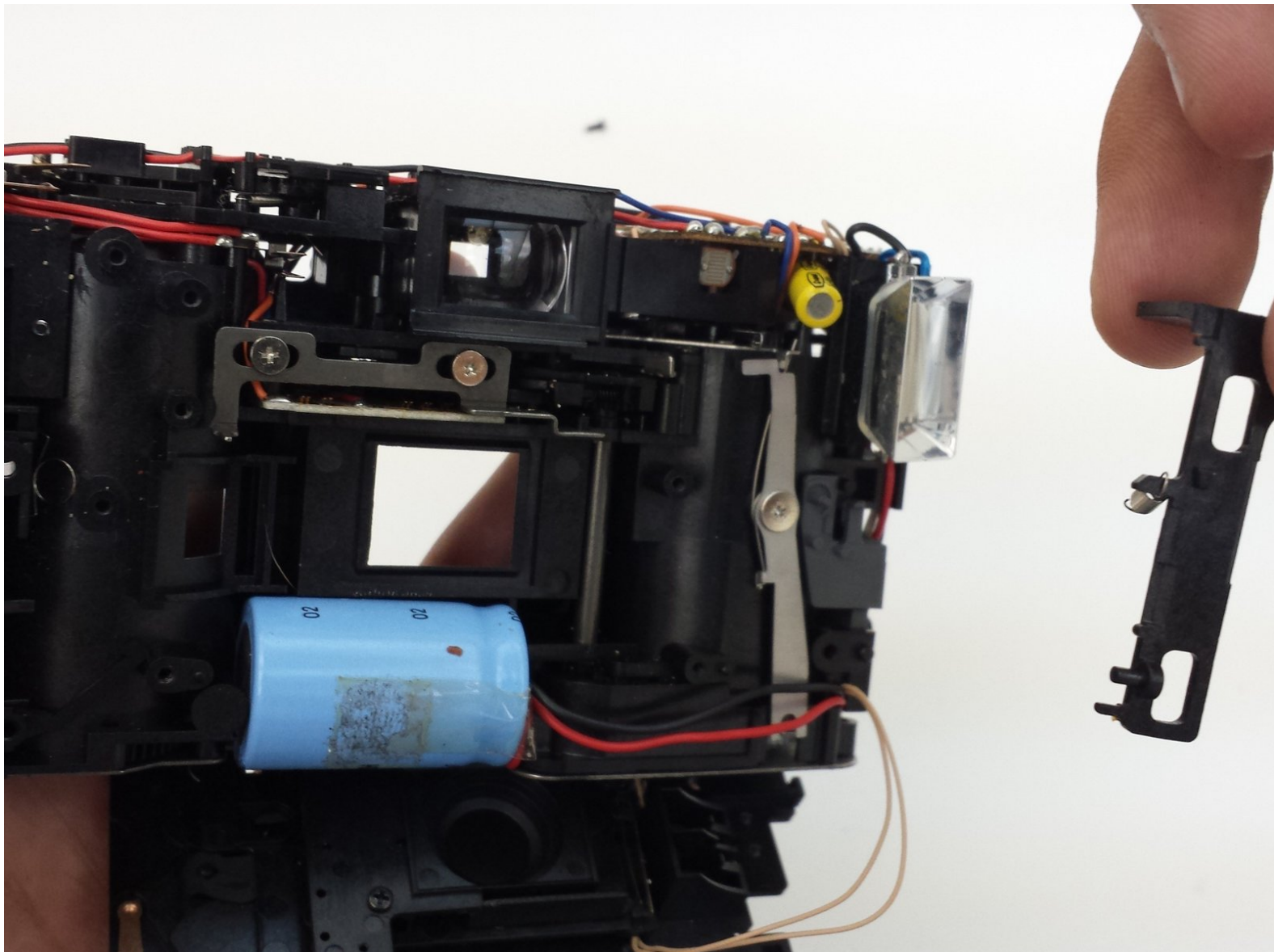




Ricoh YF-20 Super Button Mechanism Replacement

This guide shows to remove the Ricoh YF-20 Super Button Mechanism.

Written By: Eric Dazet



INTRODUCTION

This process involves removing the back cover, front cover, and various other camera components. After, the button mechanism can be removed.



TOOLS:

- [Phillips #1 Screwdriver](#) (1)
-

Step 1 — Front Cover



- Unscrew the seven indicated screws from the left, right, bottom, and back sides of the camera.

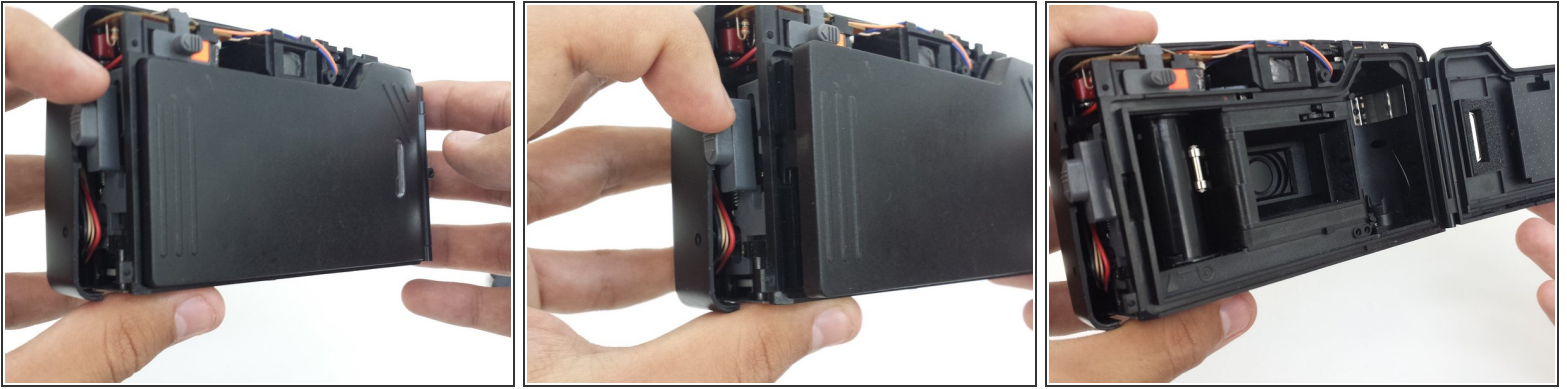
Step 2



- Loosen the back cover from both the left and the right sides of the camera.

⚠ Remove back cover. The lid of the battery compartment may fall off because it is not attached to anything.

Step 3



- Open the film compartment.
- Press your finger on top of the grey latch on the left side of the camera.

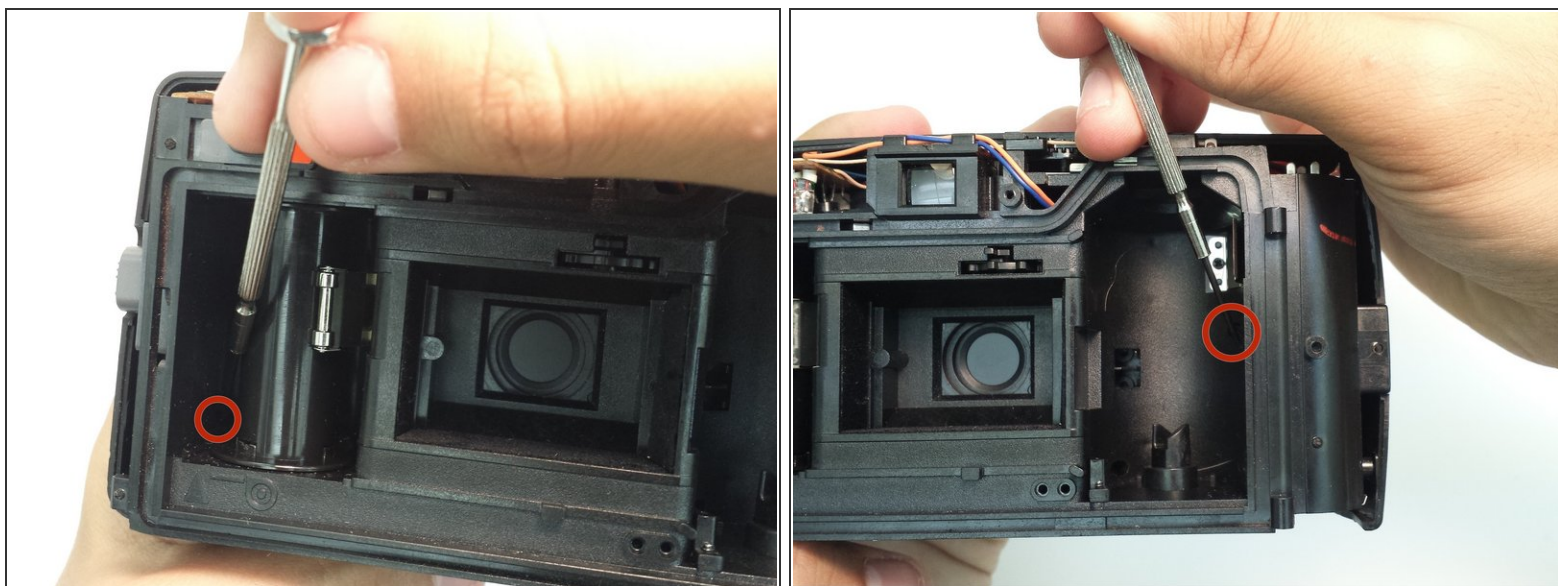
Step 4



i Removing the film compartment door is optional. However, it may aid maneuverability in future steps.

- Use a thin object like a toothpick or a small screwdriver to push down on the metal pin holding the film compartment door in place.
- Use your fingers to completely remove the metal pin.
- Remove the film compartment door.

Step 5



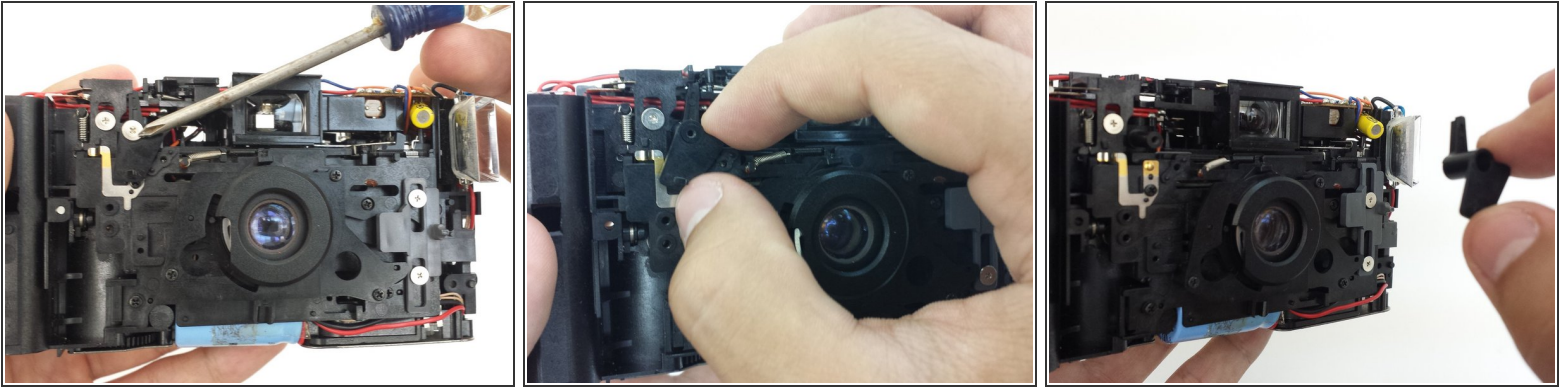
- Using a thin shaft screwdriver, unscrew the two indicated screws within the film compartment.

Step 6



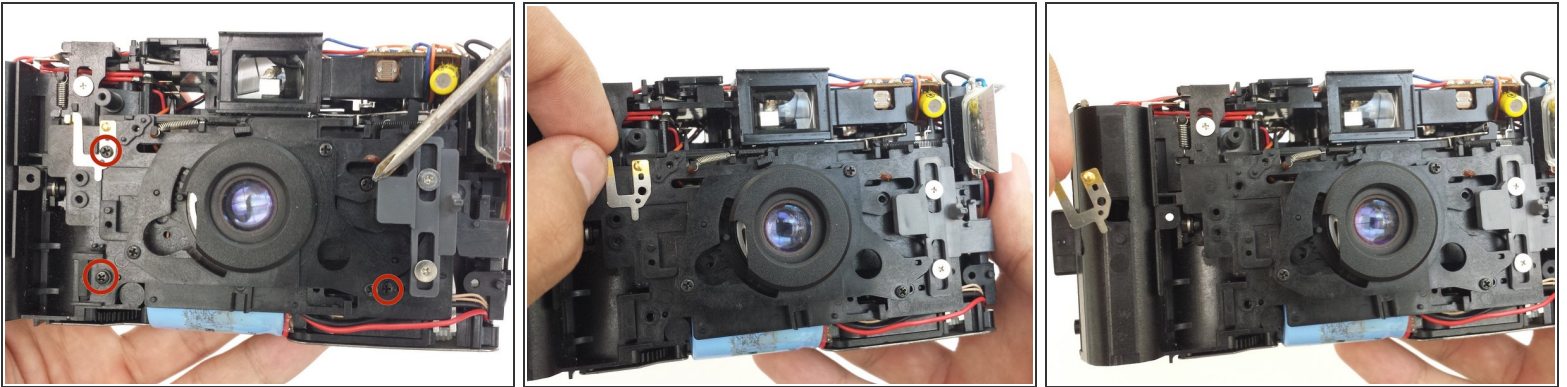
- Loosen the front cover from the left and right sides of the camera.
- Remove the front cover.

Step 7 — Ricoh YF-20 Super Button Mechanism Replacement



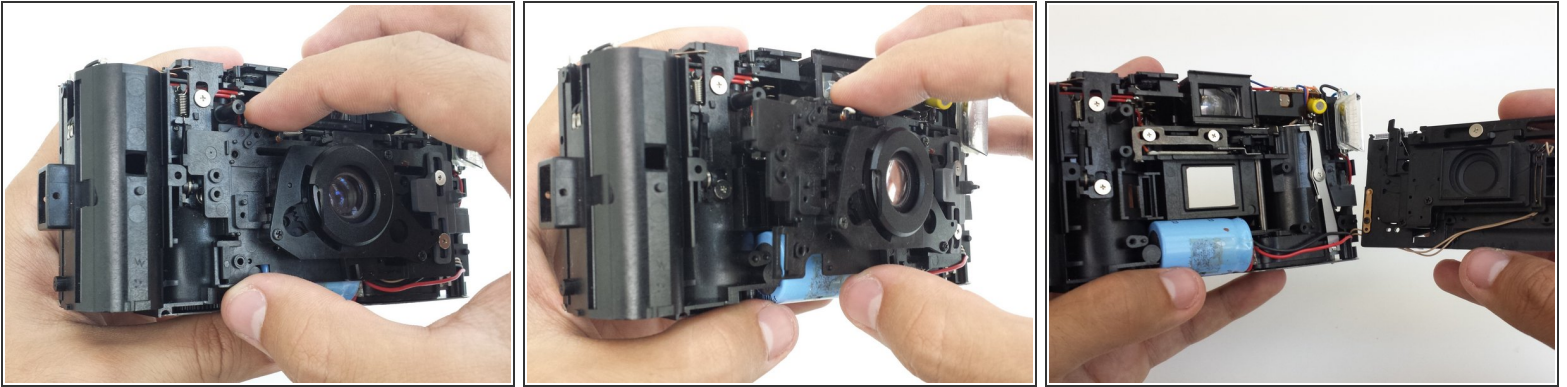
- The button mechanism is only attached to the camera body itself. Set the front and back covers aside.
- Remove the one screw that holds the front face plate brace in place.
- Remove brace.

Step 8




- Unscrew the four screws keeping the front face plate in place.
- ⓘ The top left screw also holds a metal clip in place.
- Remove metal clip.

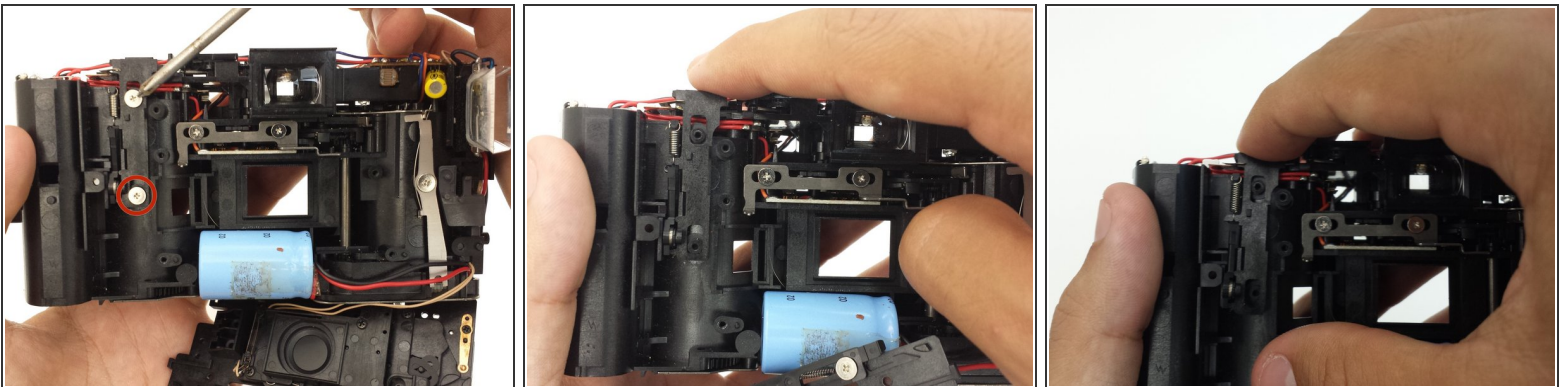
Step 9



- After removing the metal clip in the previous step, the front face plate can be removed.

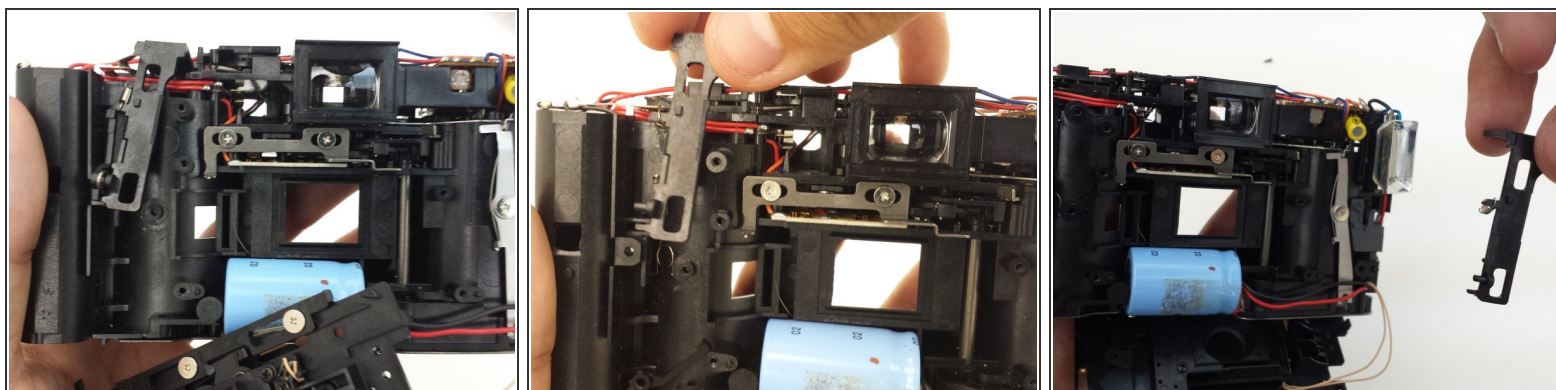
 The front face plate is attached to the camera body by two small wires. Remove the plate carefully and do completely separate from camera body.

Step 10



- Unscrew the two screws that hold the button mechanism in place.
- Press down on button mechanism to unlatch it from the camera body. When pressed down, the bottom of the mechanism should push outward.

Step 11



- Lift the button mechanism up carefully, removing the spring at the top of the mechanism from where it is attached to the camera body.
- Remove the button mechanism.

To reassemble your device, follow these instructions in reverse order.