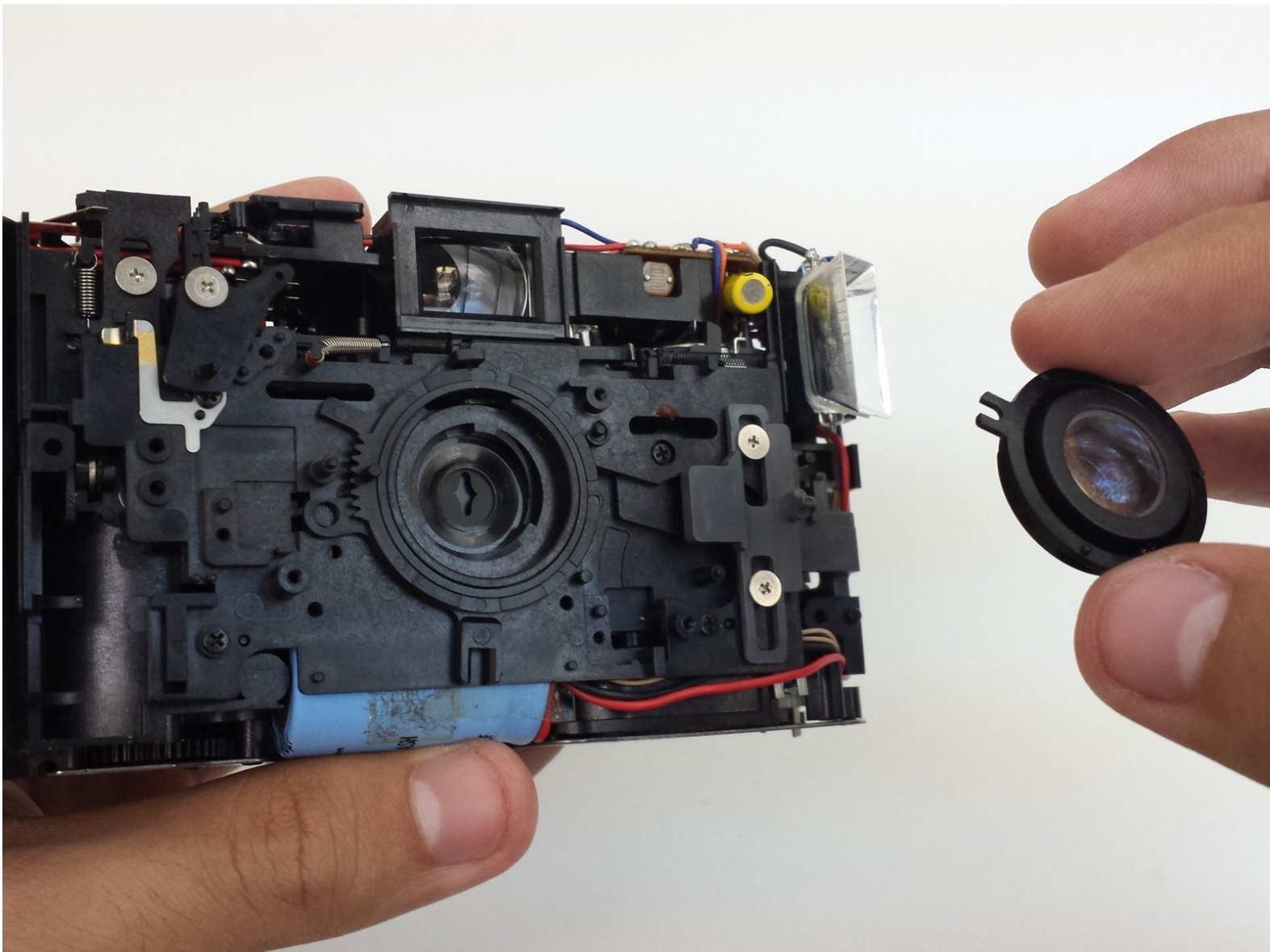




Ricoh YF-20 Super Lens Replacement

This guide shows how to remove the Ricoh YF-20 Super Lens.

Written By: Eric Dazet



INTRODUCTION

This process involves removing the back cover and the front cover of the camera. After, the lens can be removed from the camera body.

TOOLS:

- [Phillips #1 Screwdriver](#) (1)
-

Step 1 — Front Cover




- Unscrew the seven indicated screws from the left, right, bottom, and back sides of the camera.

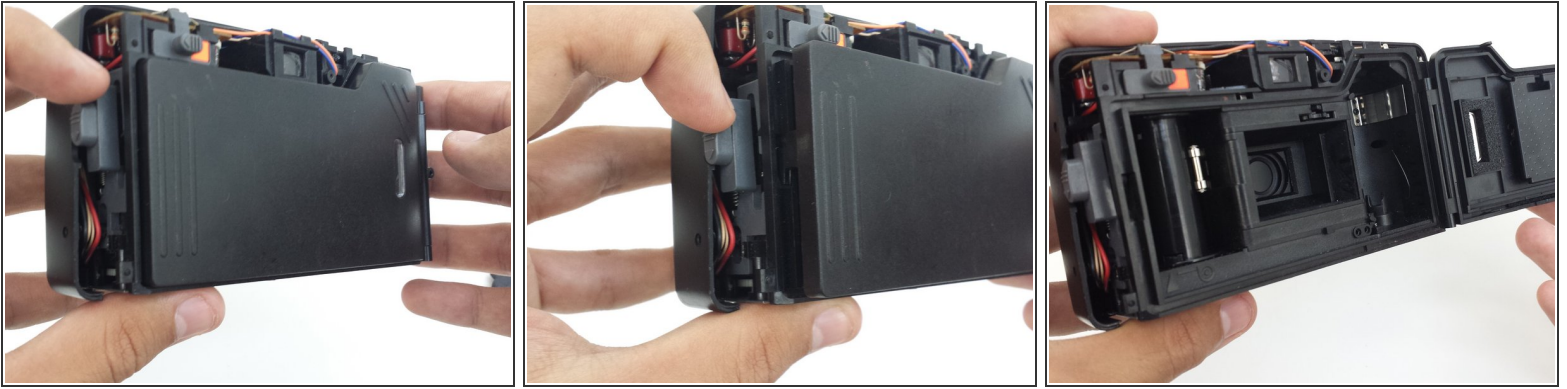
Step 2



- Loosen the back cover from both the left and the right sides of the camera.

 Remove back cover. The lid of the battery compartment may fall off because it is not attached to anything.

Step 3



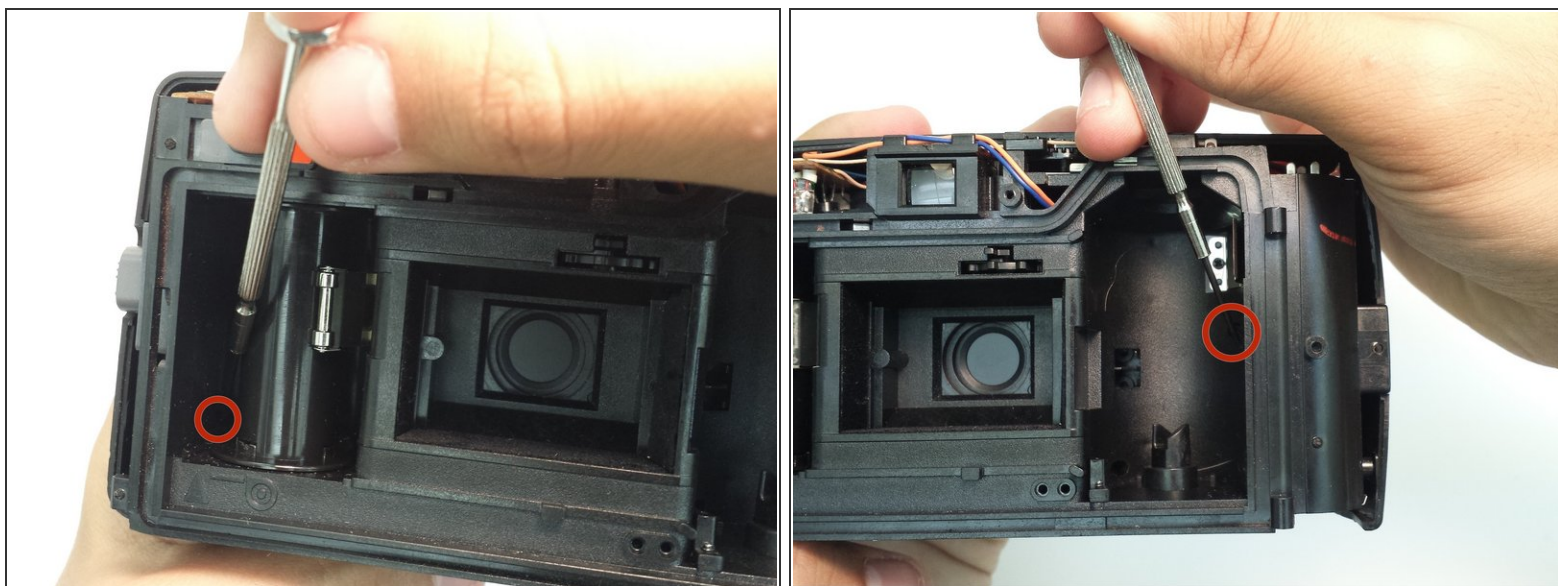
- Open the film compartment.
- Press your finger on top of the grey latch on the left side of the camera.

Step 4



- i** Removing the film compartment door is optional. However, it may aid maneuverability in future steps.
- Use a thin object like a toothpick or a small screwdriver to push down on the metal pin holding the film compartment door in place.
 - Use your fingers to completely remove the metal pin.
 - Remove the film compartment door.

Step 5



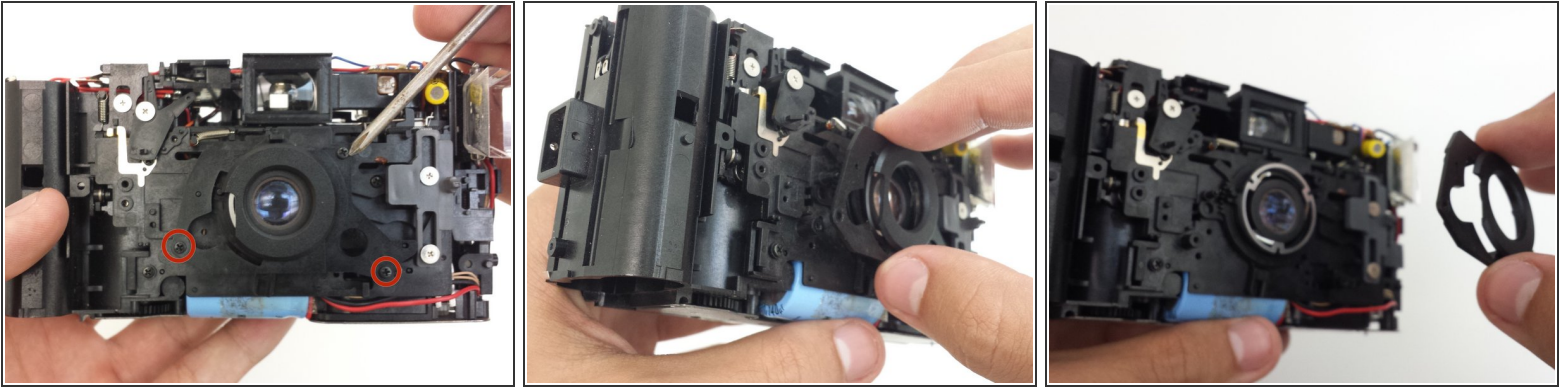
- Using a thin shaft screwdriver, unscrew the two indicated screws within the film compartment.

Step 6



- Loosen the front cover from the left and right sides of the camera.
- Remove the front cover.

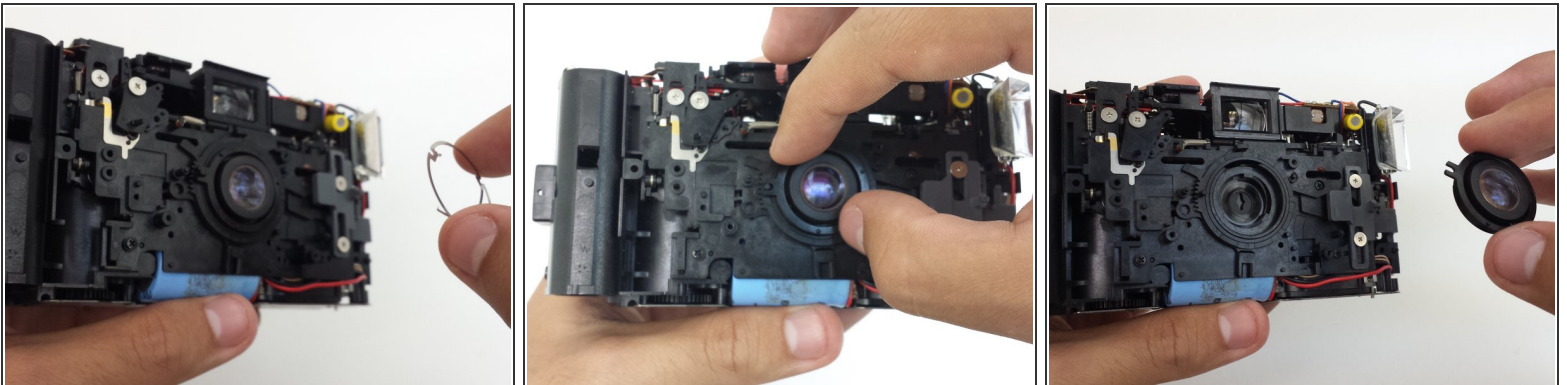
Step 7 — Lens



 The lens is only attached to the main camera body. Set the front and back covers aside.

- Unscrew three screws from the outermost plastic plate covering the lens.
- After the screws are removed, the outermost plate can be removed.

Step 8



- Remove the ring shaped metal brace.
- Using fingers or tweezers, remove the lens from the camera.

To reassemble your device, follow these instructions in reverse order.