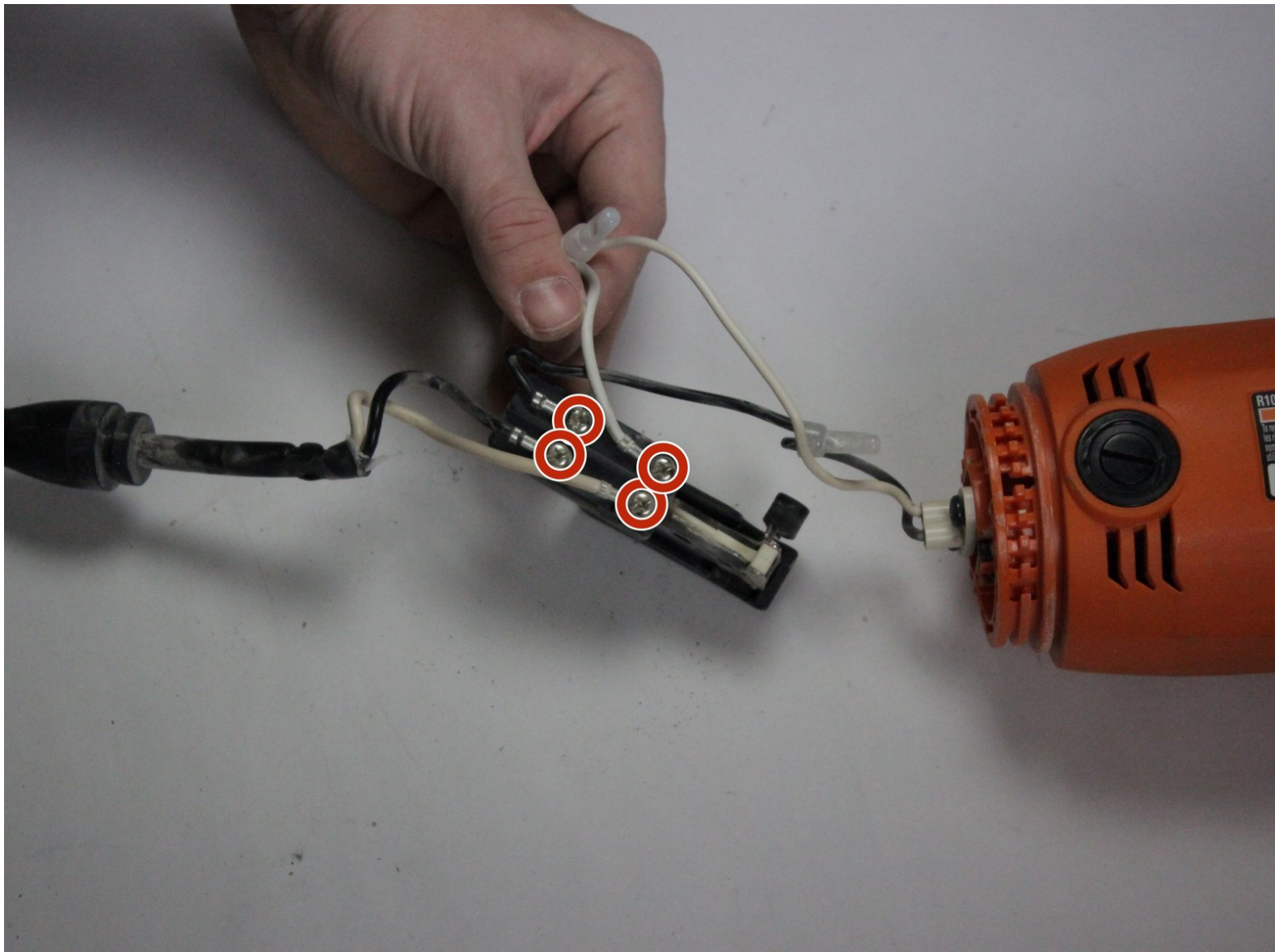




# Ridgid Angle Grinder R10202 Power Trigger Replacement

How to replace a Ridgid Angle Grinder R10202 power trigger.

Written By: Alexander Armstrong



# INTRODUCTION

If during a work session you accidentally drop the device and fracture the power trigger, you will need to replace it. The inner mechanism can also break resulting in a broken power trigger. This guide will show you how to disassemble the handle and replace the switch.



## TOOLS:

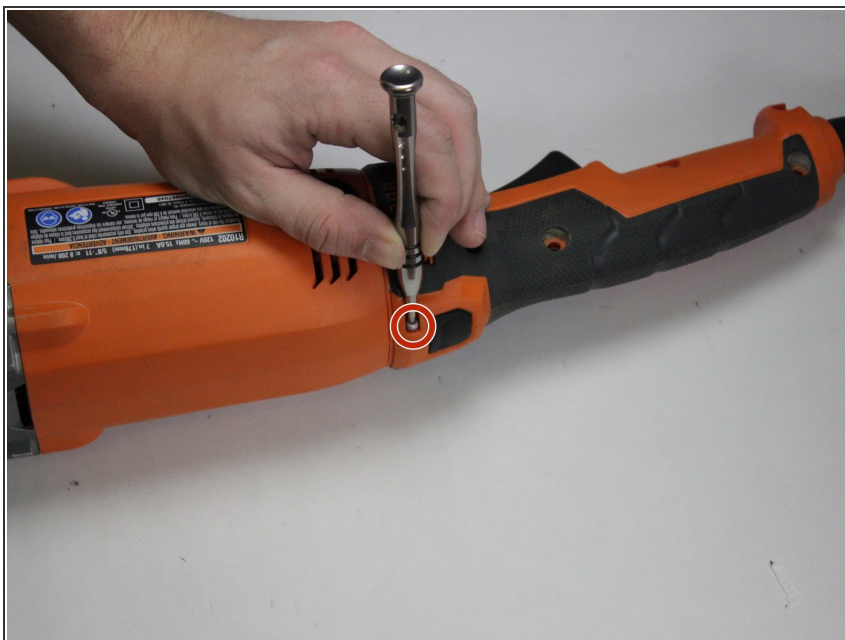
- [T20 Torx Screwdriver](#) (1)
  - [T5 Torx Screwdriver](#) (1)
  - [T10 Torx Screwdriver](#) (1)
  - [Phillips #1 Screwdriver](#) (1)
-

## Step 1 — Ridgid Angle Grinder R10202 Handle Disassembly



- Using a Torx T20 screwdriver, unscrew the five M5 x 16 mm screws.
- Using the T20 screwdriver, remove the M5 x 28 mm screw.

## Step 2



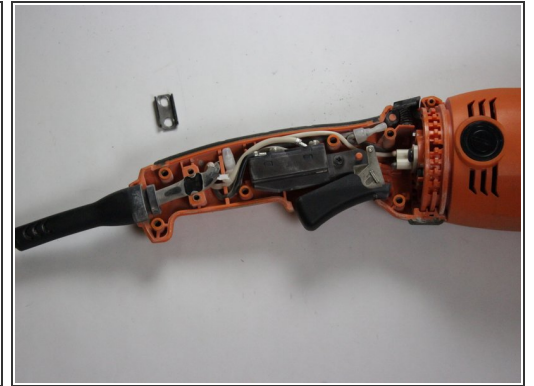
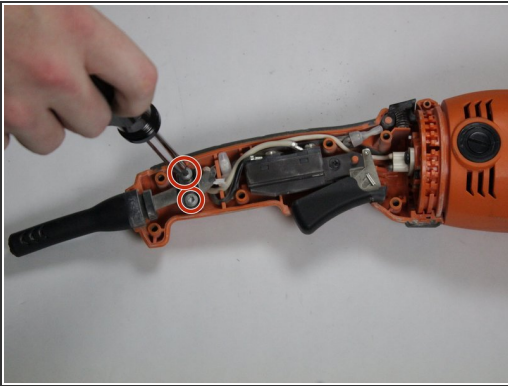
- Using a Torx T10 screwdriver, remove the M3 x 10mm screw.

### Step 3



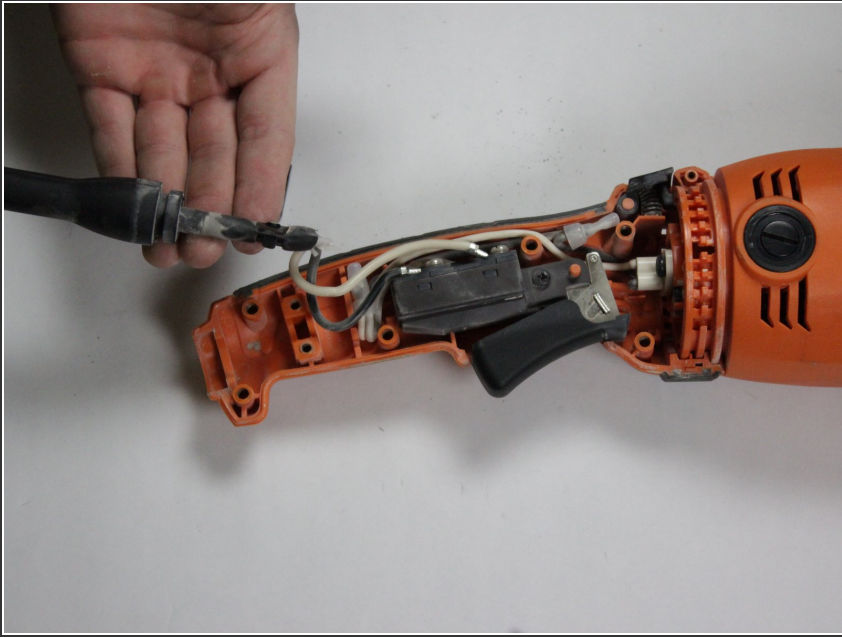
- Gently pull off the right side handle.

### Step 4



- Using a hex head screwdriver, remove the two 8-16 x 1/2in screws.

## Step 5



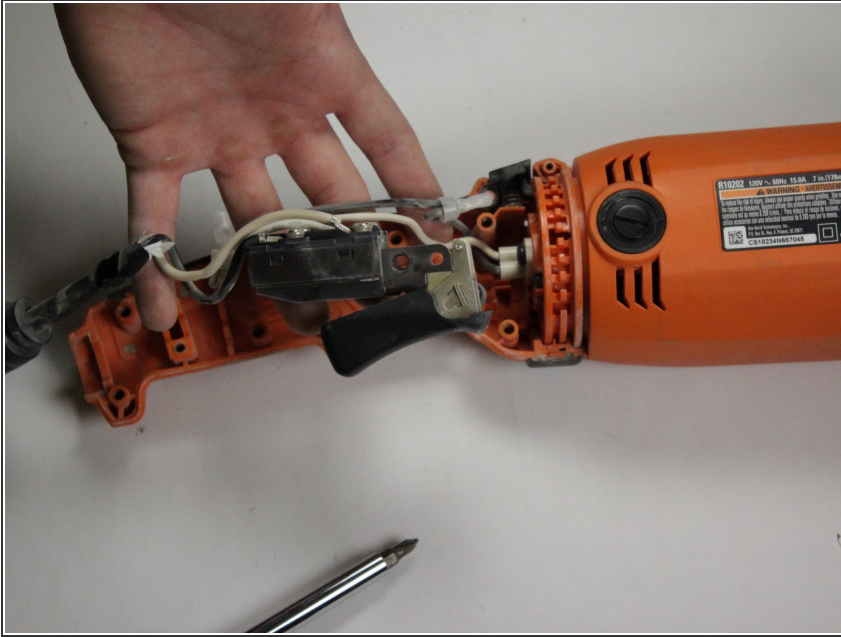
- Gently pull away the bend relief.

## Step 6



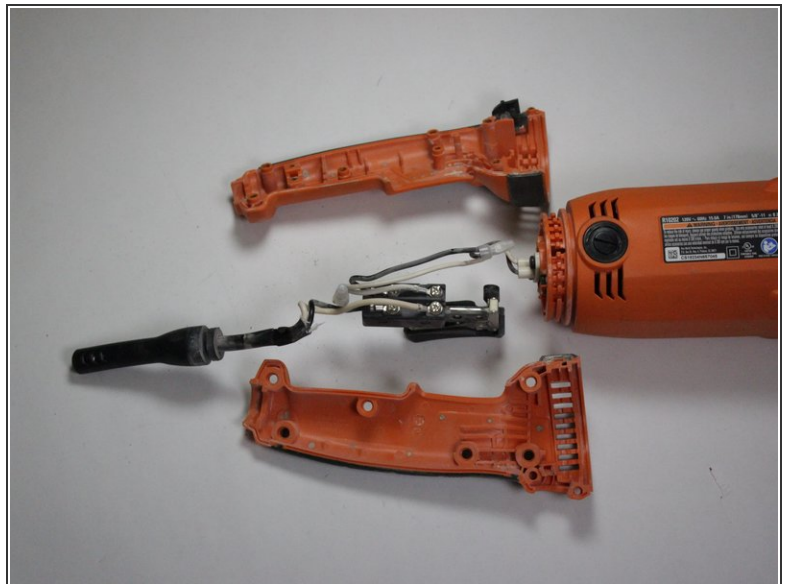
- Remove the one M4 x 14 mm screw using a Phillips screwdriver.

## Step 7



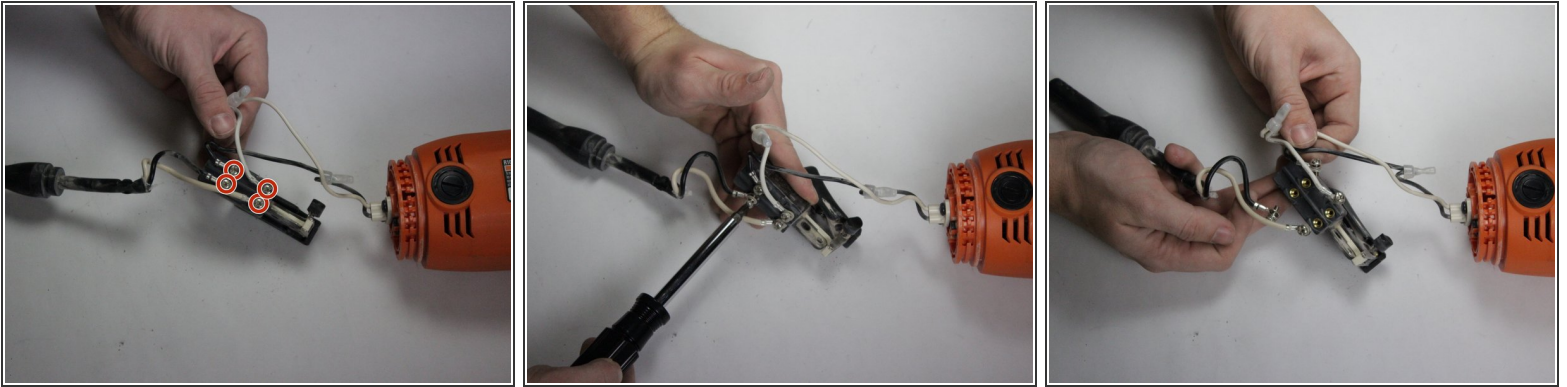
- Gently lift away the switch and wires.

## Step 8




- Press down the handle lock button.
- Force-ably twist and pull away the left side handle assembly.

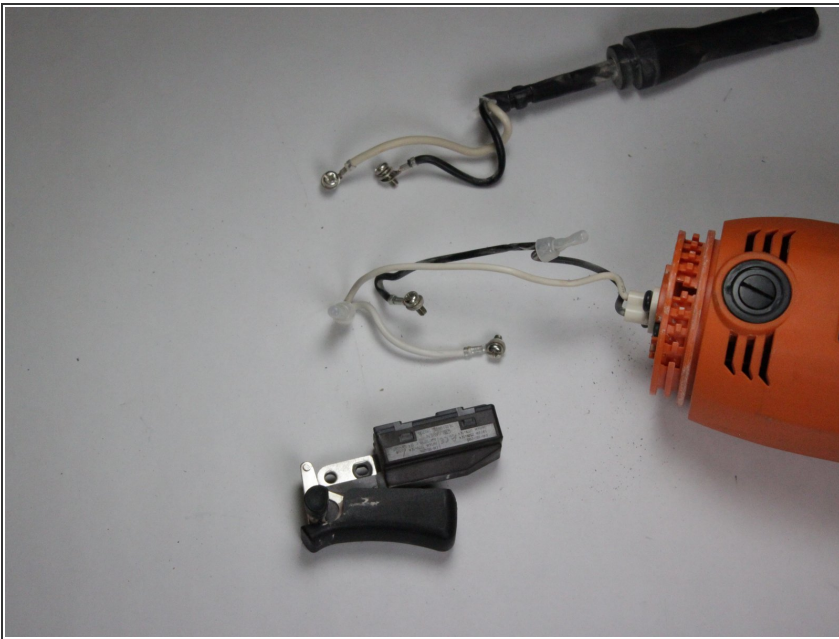
## Step 9 — Power Trigger



- Using a bit driver, carefully remove the 4 M3.5 X 7mm holding the wires on.

 Remember the order and position of each wire.

## Step 10



- The Switch is now free of the Grinder. Dispose of the broken Switch and install your new Switch.

To reassemble your device, follow these instructions in reverse order.