



Ridgid GEN5X R8611506 Gears Replacement

This guide will show you how to replace the Gears on the Ridgid 5X.

Written By: Harrison Essary



INTRODUCTION

Use this guide if your drill's gears are broken. You will need the tools listed below in order to complete this guide.

TOOLS:

- [iFixit Opening Tools](#) (1)
 - [T10 Torx Screwdriver](#) (1)
 - [T15 Torx Screwdriver](#) (1)
 - [Phillips #0 Screwdriver](#) (1)
-

Step 1 — Outer Case



- Orient the drill to have the side with the screws facing up.
- Using the Torx T10 screwdriver, remove the eight 4.0mm screws from the face of the drill.

Step 2



- Orient the drill to where the back is facing up.
- Using a Torx T10 screwdriver, remove the four 6.0mm screws that attach the back piece to the drill.
- Remove the back piece of the drill using the iFixit opening tool.

Step 3



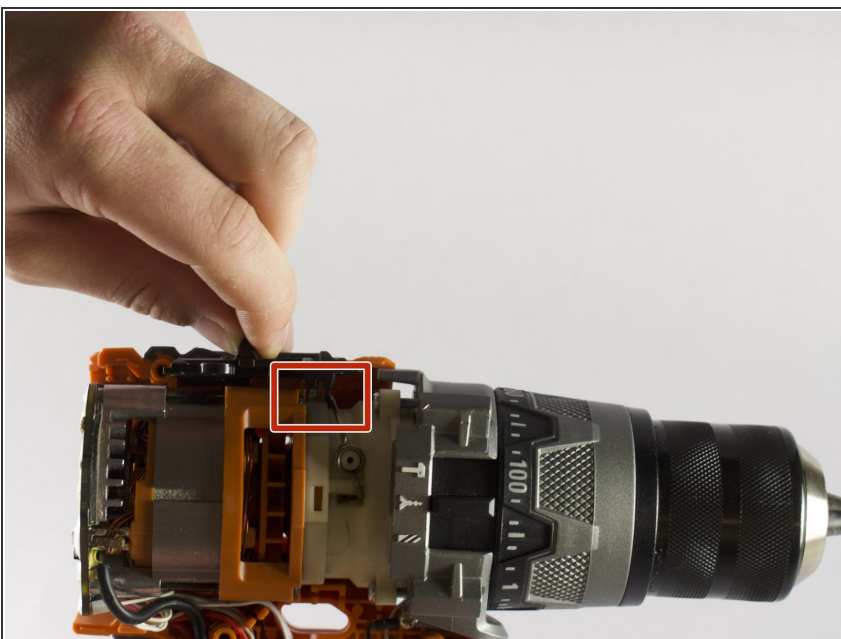
- Orient the drill to where the chuck is facing up.
- Using the Torx T15 screwdriver, remove the four 8.0mm screws from the front of the drill.

Step 4



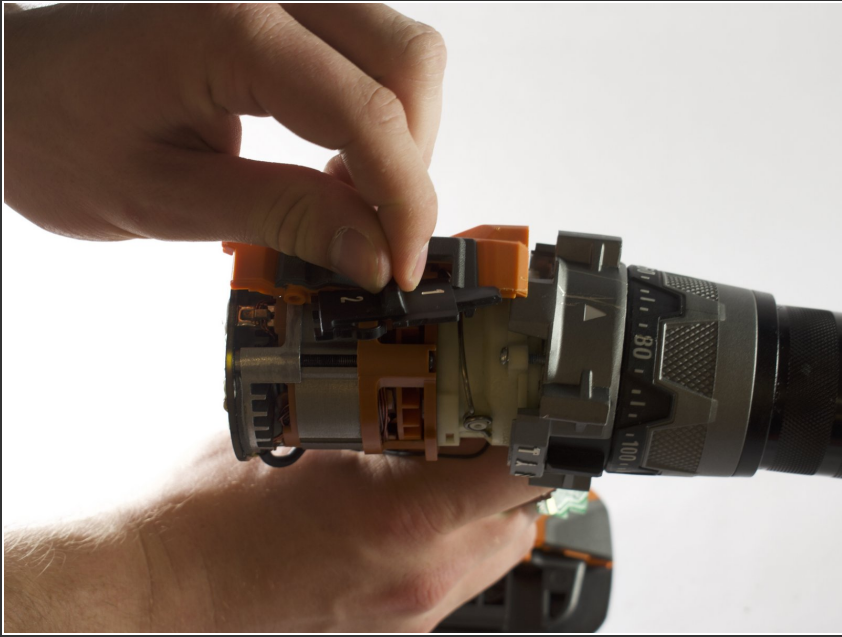
- Orient the drill so the side with the screw holes is facing up.
- Use a plastic opening tool to gently pry the face off of the drill.
- Remove the face completely from the drill.

Step 5 — Speed Selector Switch



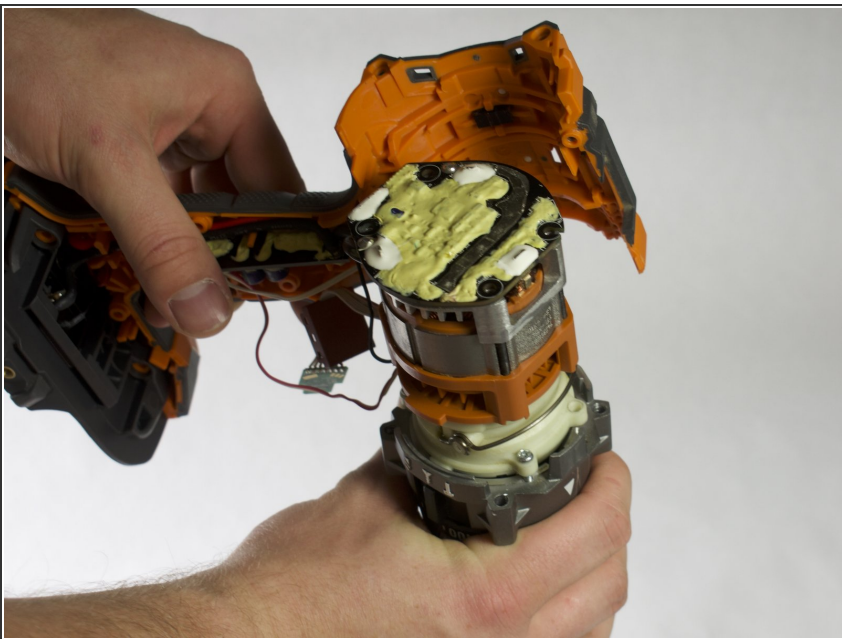
- Locate the selector switch.
- Unhook the selector switch from the small silver wire located near the top of the drill.

Step 6



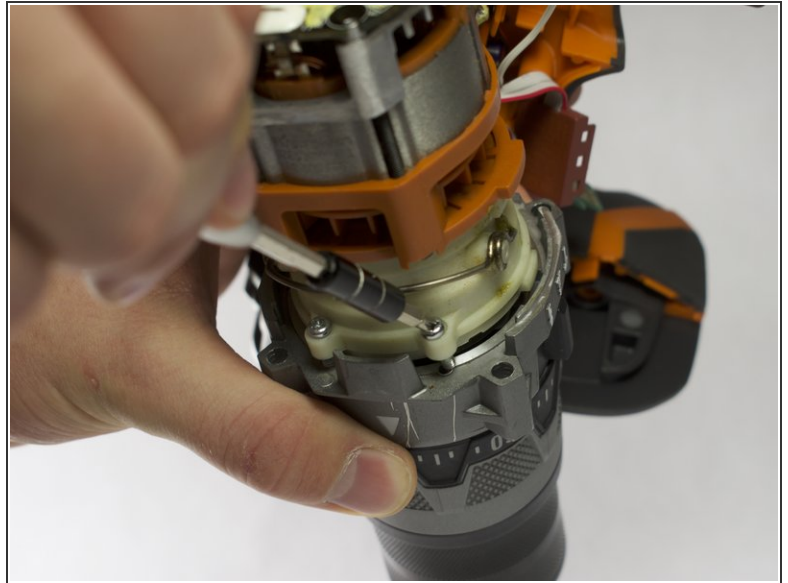
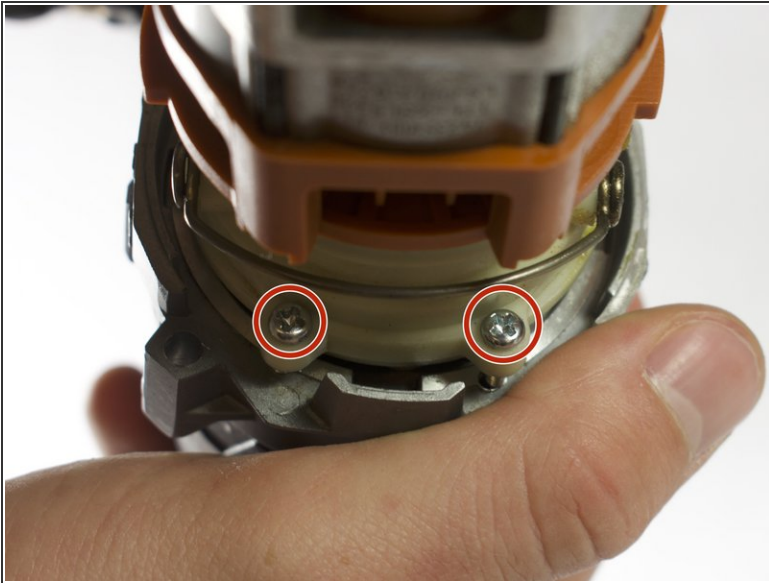
- Remove the speed selector switch from the case housing.

Step 7 — Gears



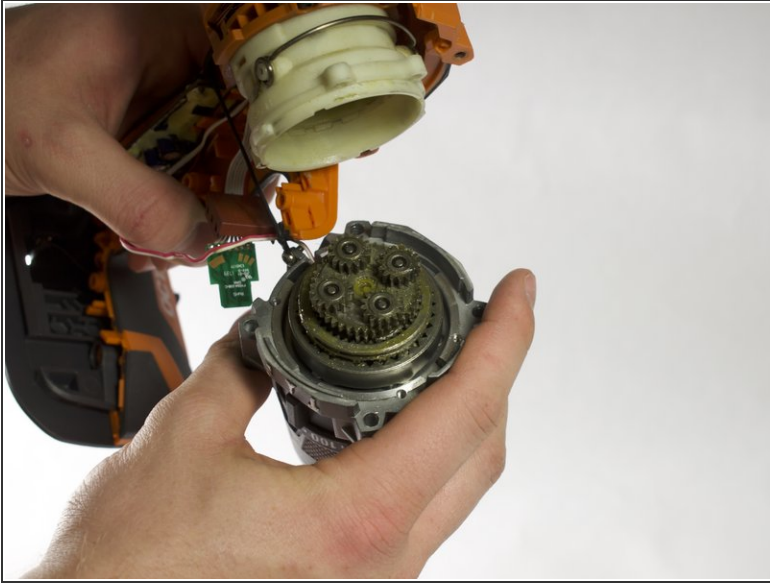
- Pull the motor and chuck out of the drill casing.

Step 8



- Orient the motor and chuck to where the back of the motor is facing up.
- Using a Phillips #0 screwdriver, remove the four 5.0mm screws that connect the motor to the chuck.

Step 9



- Pull apart the motor from the chuck to expose the gears.
- Remove the four gears located within the motor/chuck housing.

To reassemble your device, follow these instructions in reverse order.