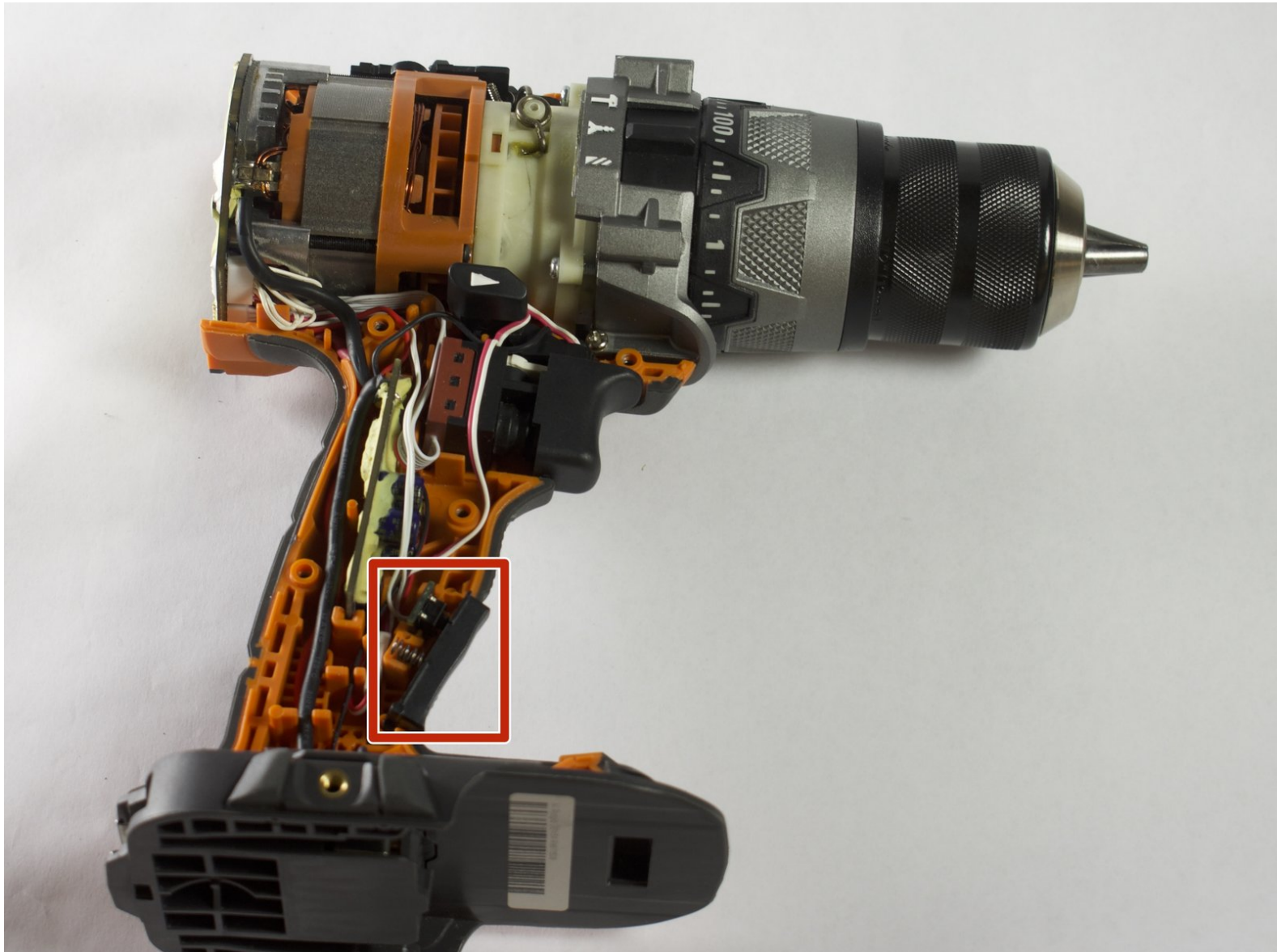




Ridgid GEN5X R8611506 Light Switch Replacement

How to fix the light switch on a Ridgid GEN5X R8611506.

Written By: Harrison Essary



INTRODUCTION

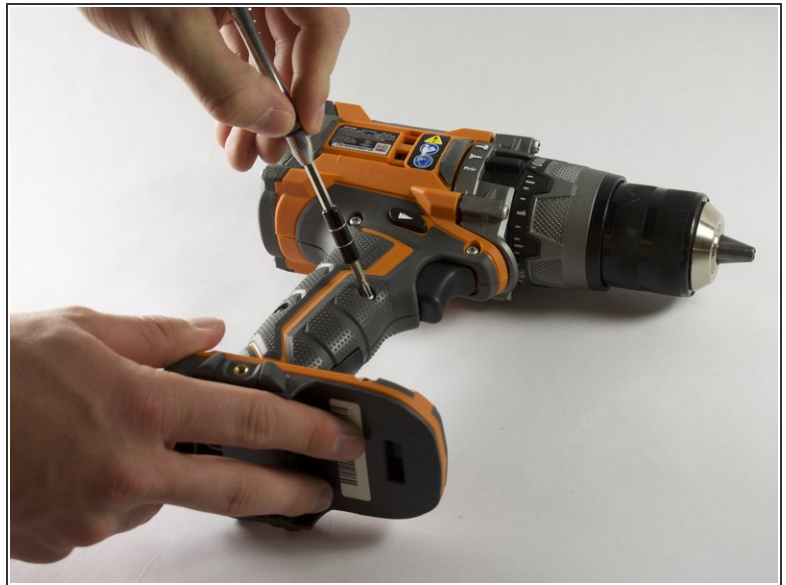
Is your light not working when the light switch is pressed? If so, here is a guide to fix the light switch. You will need a plastic opening tool, a Torx T10 screwdriver, and a Torx T15 screwdriver to remove the requisite components.



TOOLS:

- [iFixit Opening Tools](#) (1)
 - [T10 Torx Screwdriver](#) (1)
 - [T15 Torx Screwdriver](#) (1)
-

Step 1 — Outer Case



- Orient the drill to have the side with the screws facing up.
- Using the Torx T10 screwdriver, remove the eight 4.0mm screws from the face of the drill.

Step 2



- Orient the drill to where the back is facing up.
- Using a Torx T10 screwdriver, remove the four 6.0mm screws that attach the back piece to the drill.
- Remove the back piece of the drill using the iFixit opening tool.

Step 3



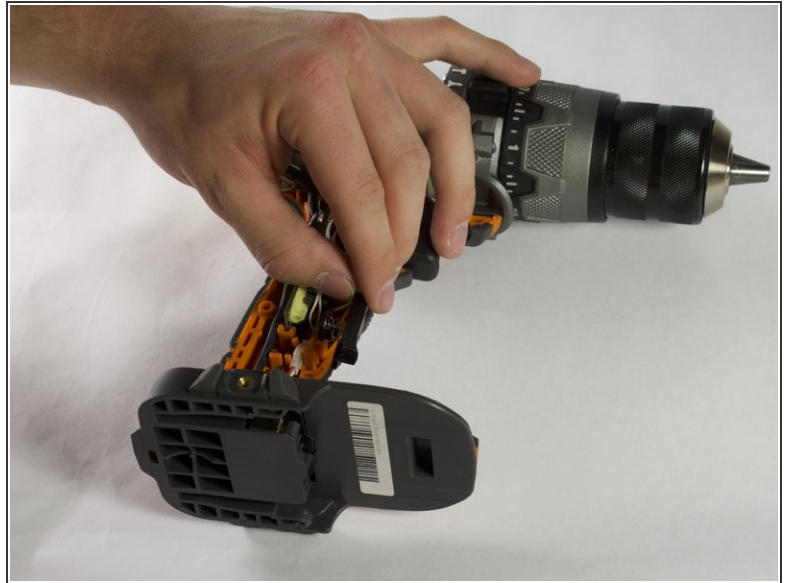
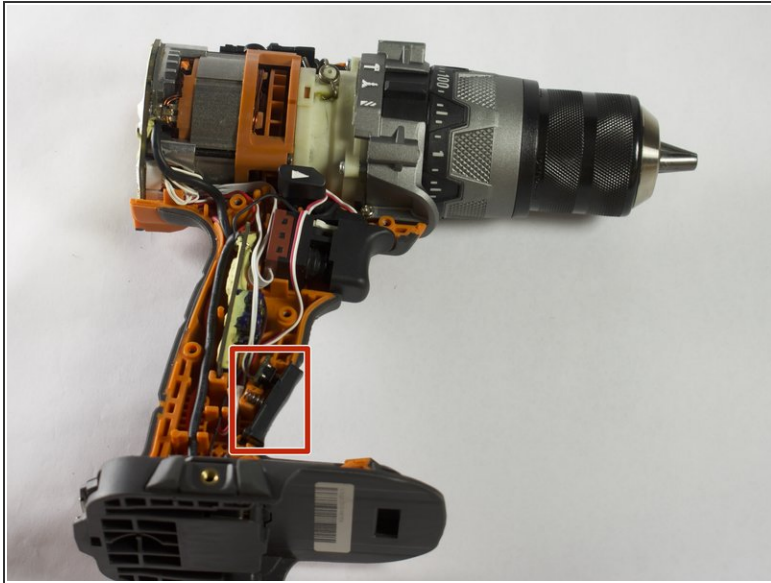
- Orient the drill to where the chuck is facing up.
- Using the Torx T15 screwdriver, remove the four 8.0mm screws from the front of the drill.

Step 4



- Orient the drill so the side with the screw holes is facing up.
- Use a plastic opening tool to gently pry the face off of the drill.
- Remove the face completely from the drill.

Step 5 — Light Switch



- Locate the light switch near the bottom of the drill's inner components.
- Gently remove the light switch from the casing.

To reassemble your device, follow these instructions in reverse order.