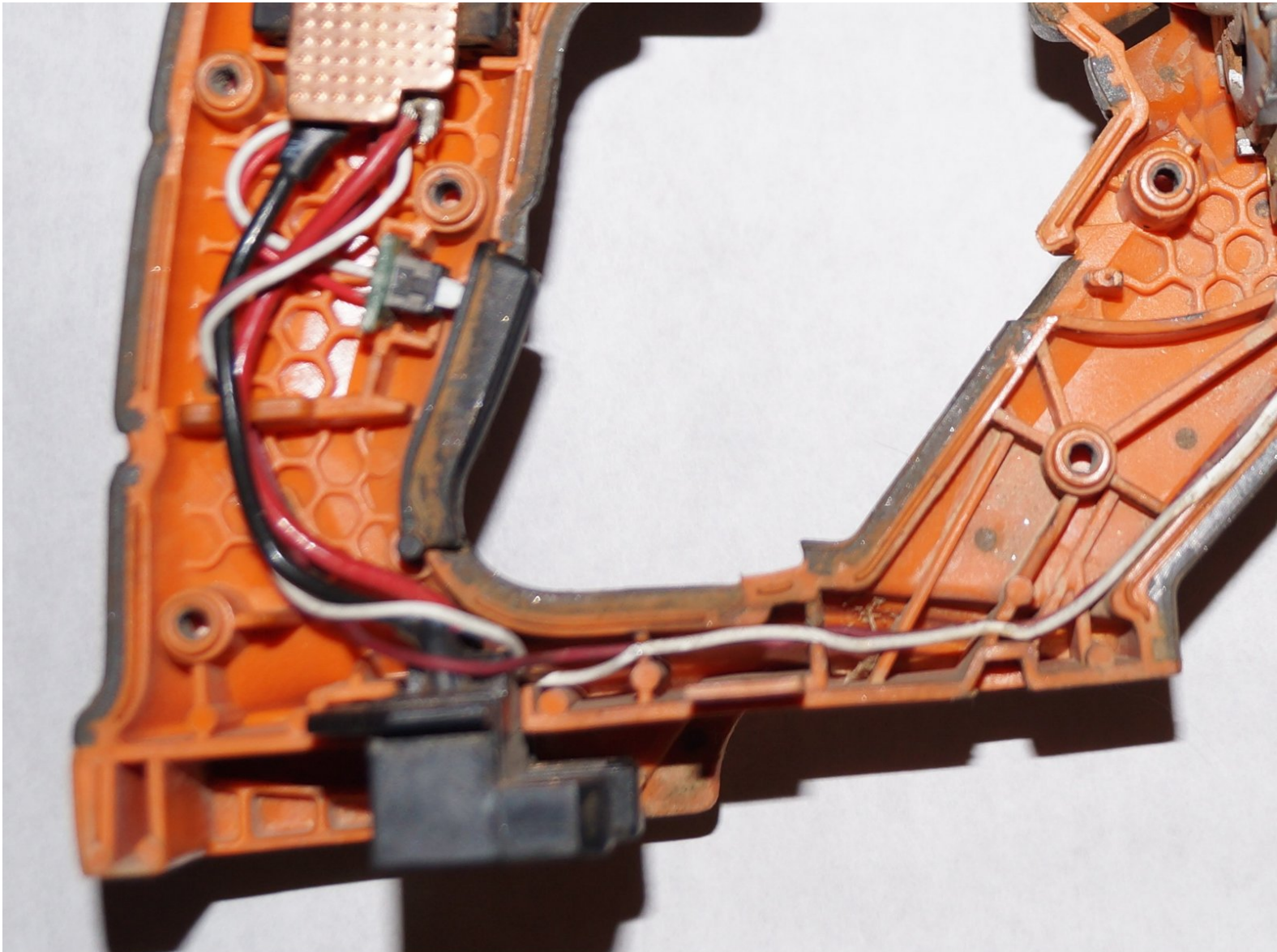




Ridgid GEN5X R8642 Battery Port Replacement

How to replace a Ridgid GEN5X R8642 battery port.

Written By: Grant White



INTRODUCTION

This guide is to help users replace their faulty battery port for the Ridgid GEN5X R8642 saw. For this guide you will need: a [soldering iron](#), a spudger, a T20 Torx Screwdriver, Battery Port for Ridgid GEN5X R8642, and a good attitude.

TOOLS:

- [T20 Torx Screwdriver](#) (1)
 - [Spudger](#) (1)
 - [Soldering Iron](#) (1)
 - [JIS #1](#) (1)
-

Step 1 — Battery Port



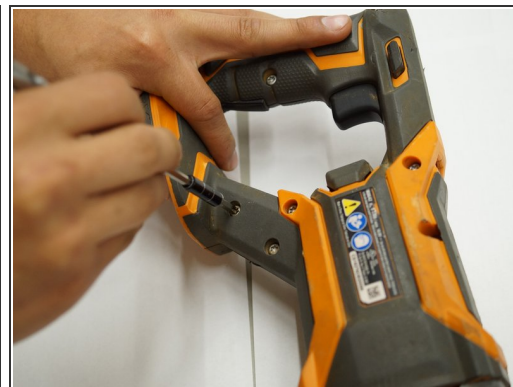
- Remove the plastic tab holding the handle cover in place by prying upward with the spudger until the tab pops off.

Step 2



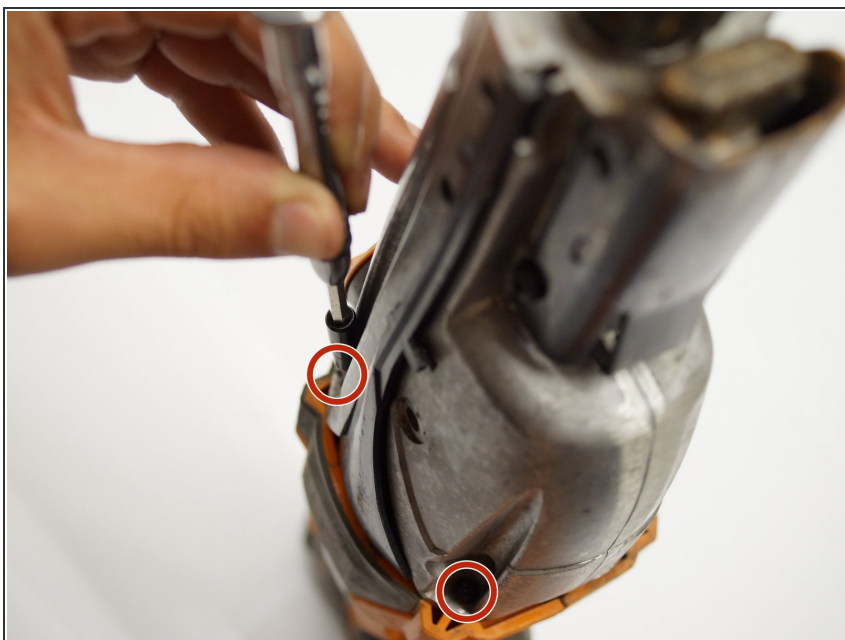
- Remove the handle cover by pulling it towards the front of the saw.
- ⓘ The grip can sometimes become stuck and may require a decent amount of force to remove.

Step 3



- Use a T20 Torx screwdriver to remove the nine M4 X 16mm screws from the plastic housing.

Step 4



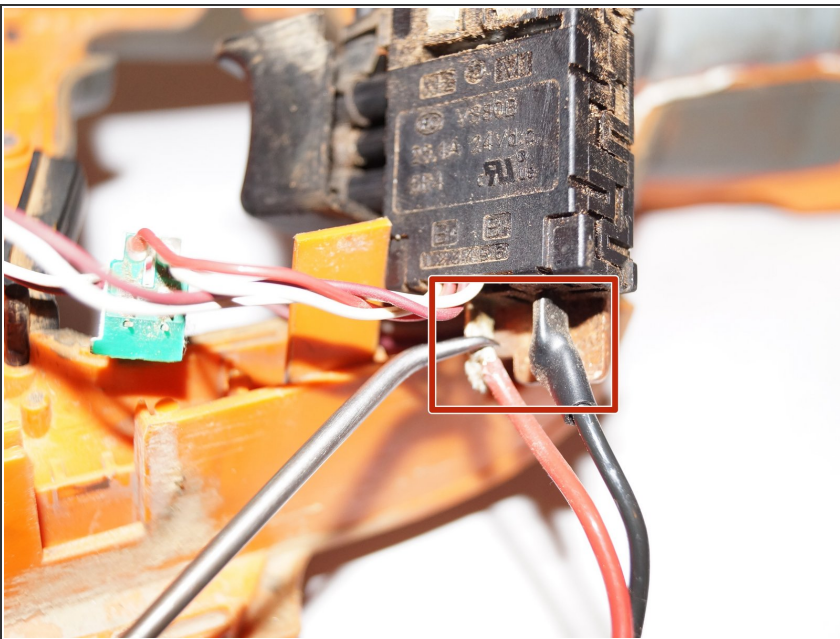
- Use a JIS #1 screwdriver to remove the two M4 x 25mm screws on both sides of the metal housing.

Step 5



- Remove one half of the plastic housing using a spudger so that the internal system is exposed.

Step 6



- Remove the plastic wire covers to the red and black connections on the switch assembly.
- ⓘ When you remove the wire covers, you should be able to see the solder on the wires.
- [Desolder the connections](#) on both the red and black wire using a soldering iron.
- Once the solder is removed, pull out the wires with the battery port attached to the wires.

To reassemble your device, follow these instructions in reverse order.