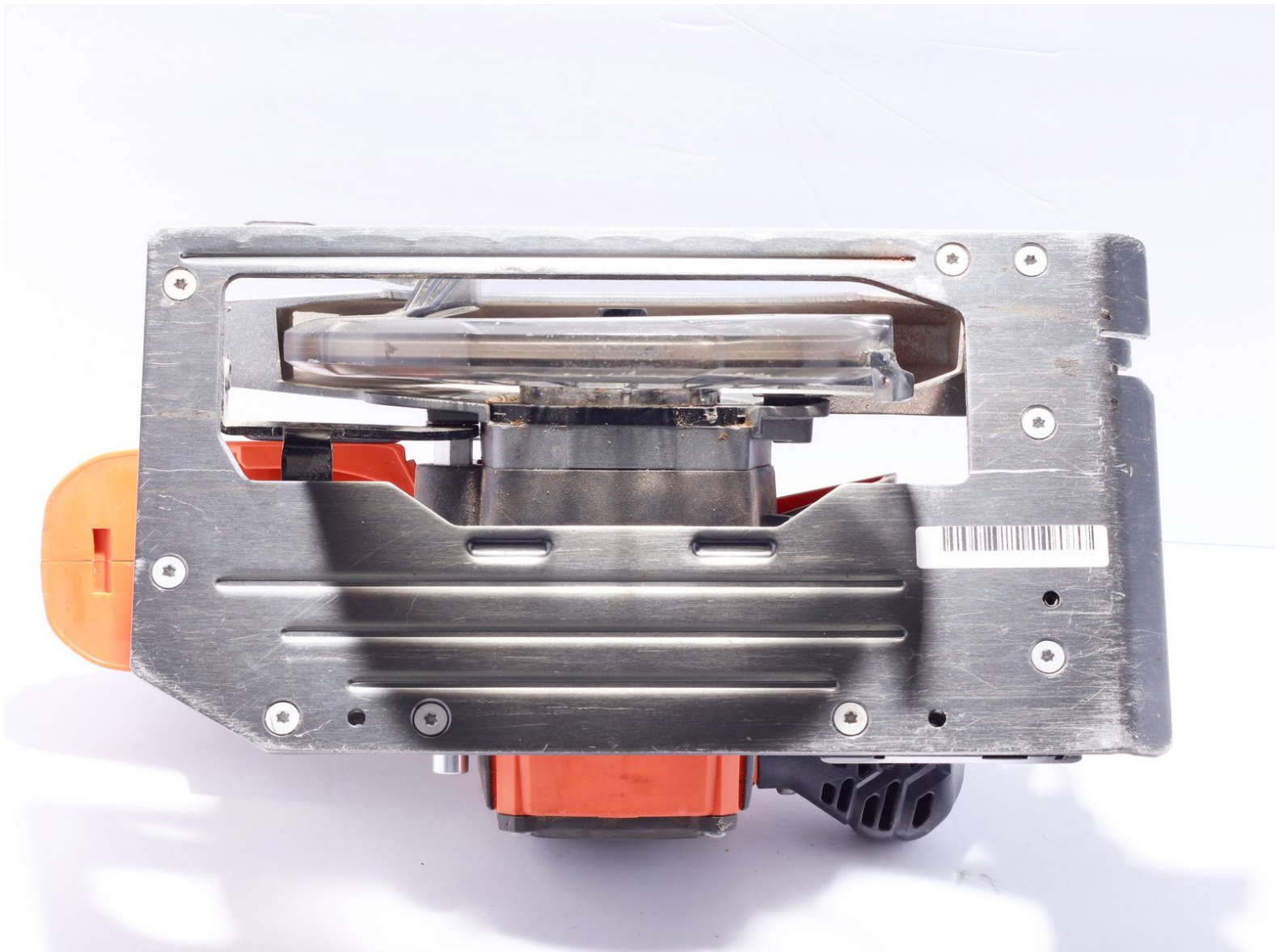




# Ridgid GEN5X R8653 Base Assembly Replacement

This guide shows you how to replace a circular saw base that may be damaged or warped.

Written By: Andrew Burke



## INTRODUCTION

This guide shows you how to replace the base assembly on this circular saw. This part may need replacement if it is damaged, broken, or warped in such a way as to prevent making clean cuts. Symptoms of a warped base assembly include: cuts skewing to the side when the blade is set at zero degrees or a binding blade caused by the cutting base not sitting flush against the cutting surface.



### TOOLS:

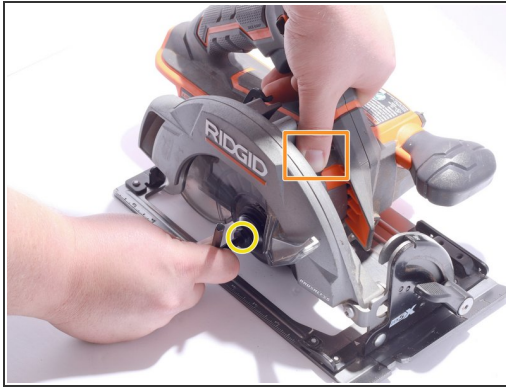
- [6mm Allen Wrench](#) (1)
- [T20 Torx Screwdriver](#) (1)




### PARTS:

- [30696601](#) (1)

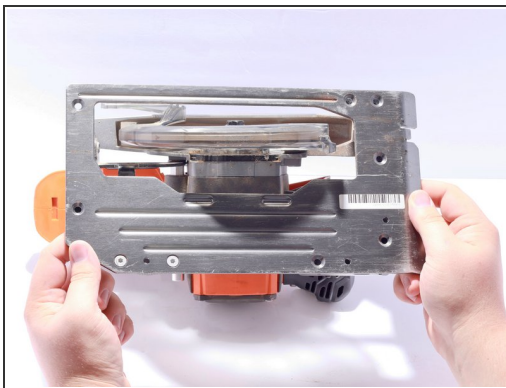
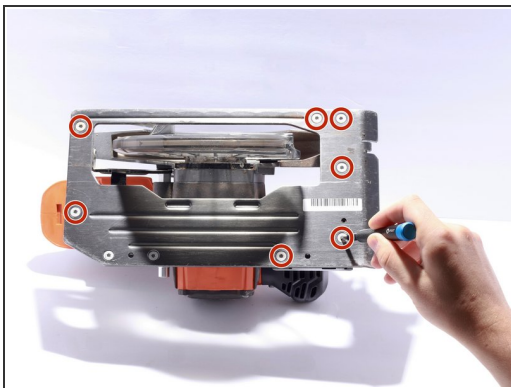
## Step 1 — Base Assembly




 Always disconnect battery and use gloves when working with the saw blade. Failure to do so may result in damage or injury!

- Remove the supplied Allen wrench from it's nesting space in the front of the handle.
- Depress and hold the spindle lock button located between the handle and blade shroud.
- Using the supplied 6mm Allen Wrench, unscrew the bolt securing the blade and remove the blade.

## Step 2



- Remove seven 6mm T20 Torx screws located around base of saw.
  - Pull base assembly away from saw.
-  These screws are very tight and need significant force to be removed.

To reassemble your device, follow these instructions in reverse order.

This document was generated on 2020-04-05 02:37:09 PM (MST).

