



Ridgid GEN5X R8653 Spindle Lock Assembly Replacement

This guide shows you how to clear out any obstructions interfering with the spindle lock assembly or to replace a damaged spindle lock.

Written By: Andrew Burke



INTRODUCTION

This guide shows you how to replace a faulty spindle lock assembly. The symptoms of a faulty or clogged spindle lock assembly are failure to stop blade rotation in less than one full rotation, or if the spindle lock does not allow the blade to rotate freely when released (binding). For more information check our troubleshooting guide. Before getting started, remove the inner flange bushing, cut depth lever, and upper housing by following the Inner Flange Bushing Guide and steps 1-5 in the Switch Assembly Guide.



TOOLS:

- [T20 Torx Screwdriver](#) (1)
- [Phillips #2 Screwdriver](#) (1)
- [TR10 Torx Security Screwdriver](#) (1)
- [Spudger](#) (1)




PARTS:

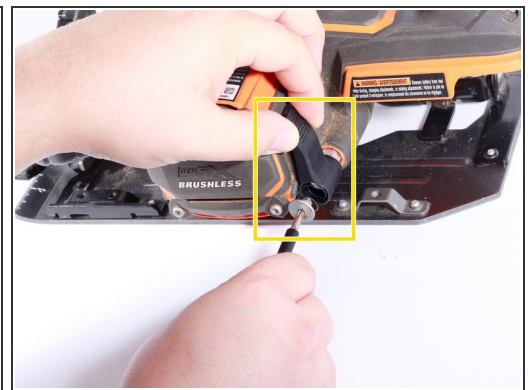
- [203783001](#) (1)
- [694163001](#) (1)

Step 1 — Switch Assembly



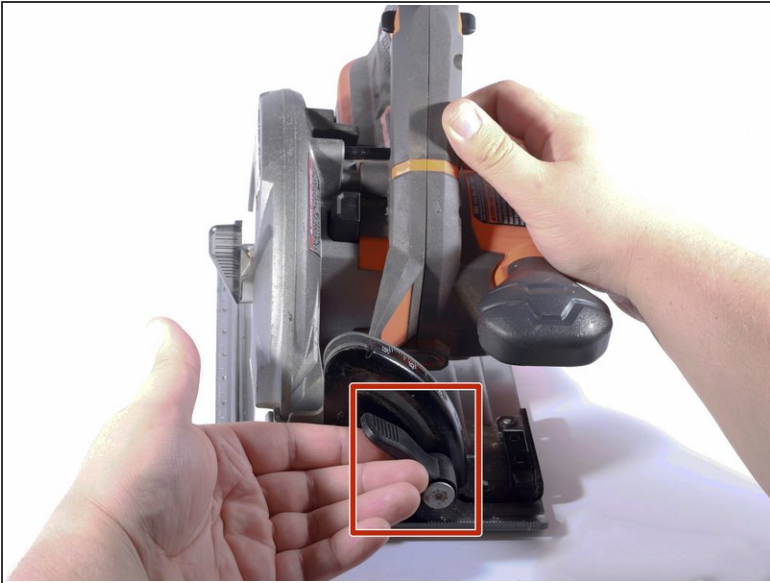
 Always disconnect battery and remove saw blade before working on this or any other circular saw. Failure to do so may result in damage or injury!

Step 2



- Remove the supplied Allen wrench from it's nesting space in the front of the handle.
- Remove one 7mm T20 torx screw to remove cut depth lever located behind the motor shroud on the left side of the saw.
- Slowly remove lever from saw ensuring not to lose the compression spring between the lever and retaining screw.

Step 3



- Loosen the angle cut guide lever by pulling it counter clockwise and tilt the base assembly to allow easy access to all housing assembly screws.

Step 4



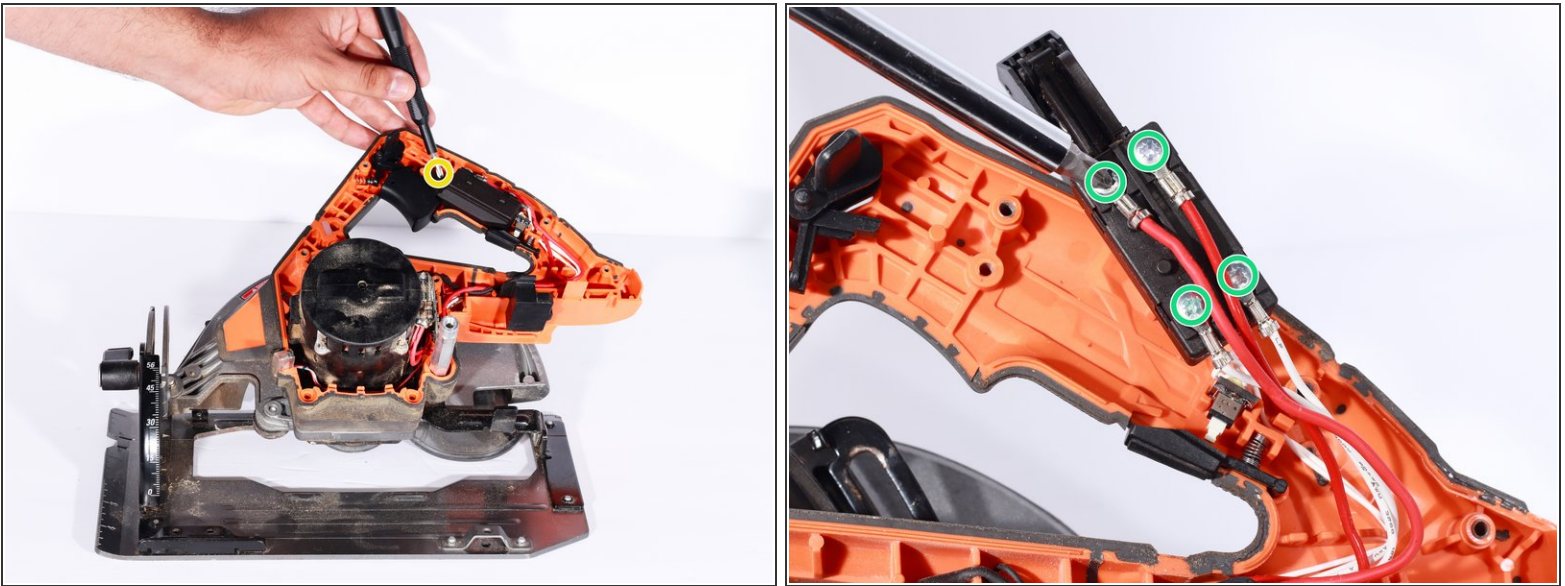
- Remove six T20 Torx 20mm screws from the upper housing.
- Remove three T20 Torx 32mm screws from the upper housing

Step 5



- Gently lift away upper housing to expose the internal parts of the saw.

Step 6



- Remove the Phillips #2 screw holding the switch assembly to the lower housing.
- Remove the four Phillips #2 screws that hold the wires onto the switch.
- Lift the switch out from the casing.
- ☑ Ensure the two red wires are mounted closest to the trigger mechanism during reassembly.

Step 7 — Spindle Lock Assembly



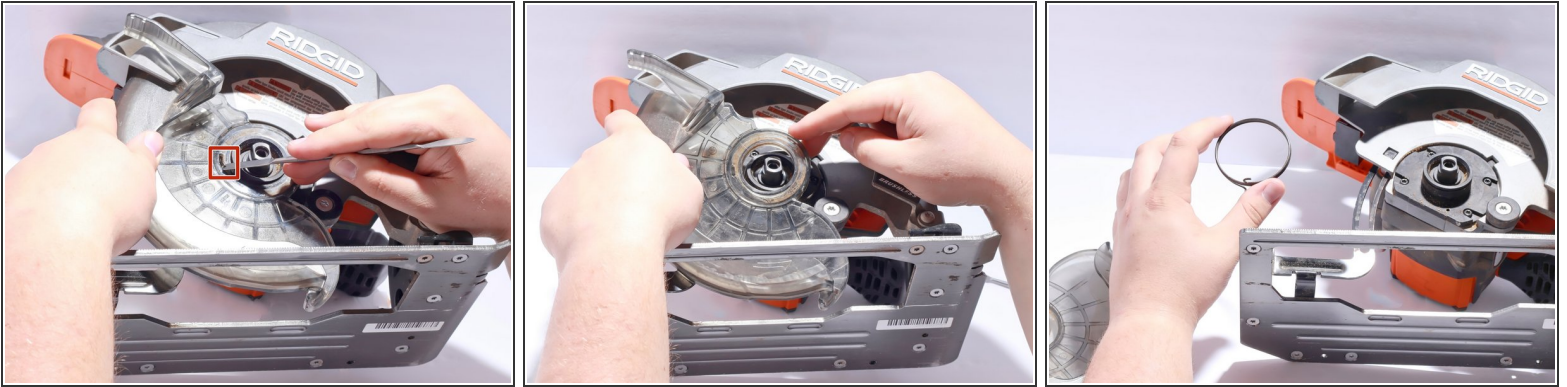
- Depress and hold the spindle lock button located between the handle and blade shroud.
 - Using the supplied 6mm Allen Wrench that was removed while taking off upper housing, unscrew the bolt holding the outer flange, blade (if installed), and inner flange.
- ⚠ Saw blade is sharp, use caution when removing and use gloves.

Step 8



- Locate the point at which the spring clip overlaps itself and pry upward and away from the saw using a flat tip screw driver or metal spudger.
- Unwind the spring clip counter clock-wise to remove.

Step 9



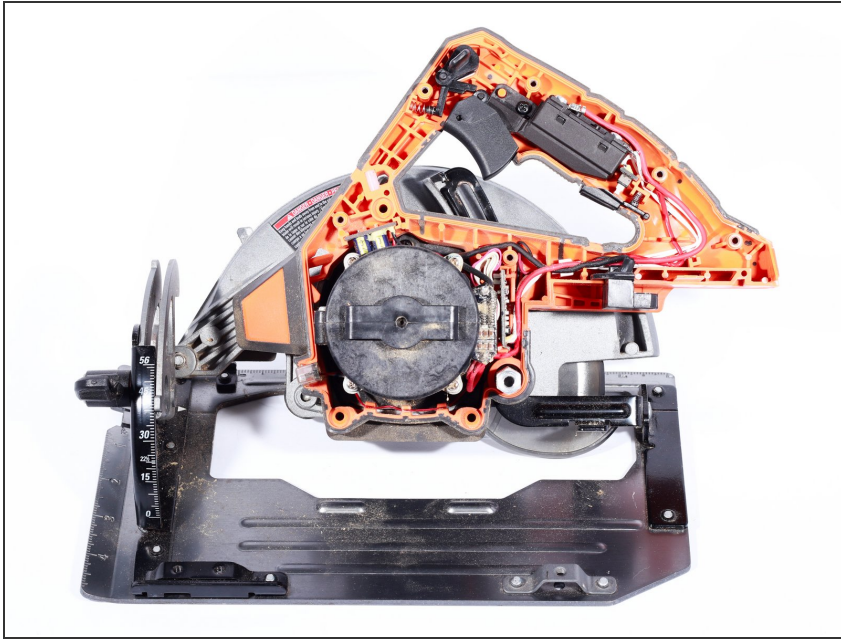
- Use a metal spudger to unhook the spring from the lower blade guard.
- Pull the lower blade guard away from the saw.
- Remove the spring from the saw by lifting straight up.

Step 10



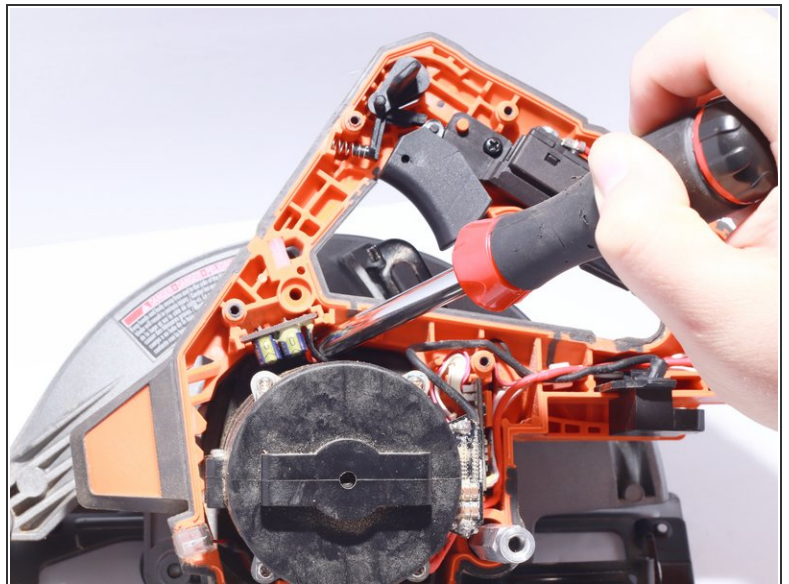
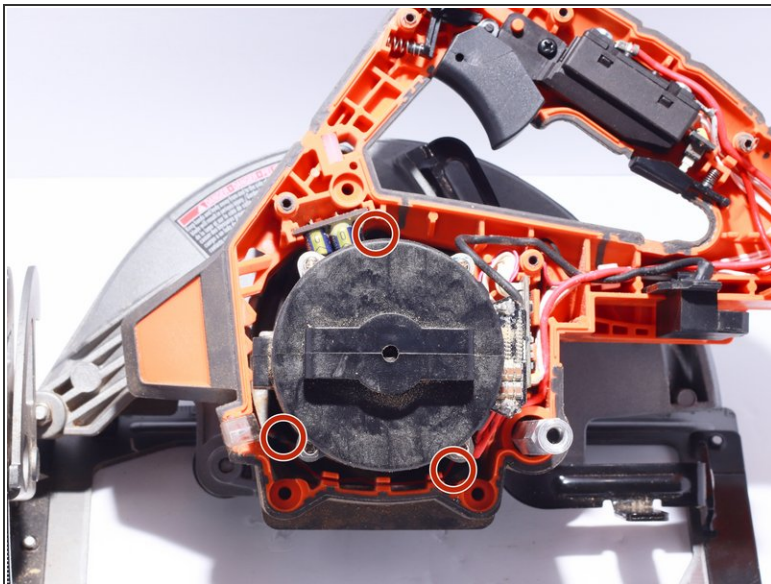
- Remove the Torx T20 12mm screw located in the lower right corner of the gear box
- Remove the Torx T20 12mm screw located in the upper left corner of the gear box
- Remove the Torx T20 12mm screw located in the upper right corner of the gear box
- Remove the Torx T20 12mm screw located in the lower left corner of the gear box
- Remove the gear box assembly.

Step 11



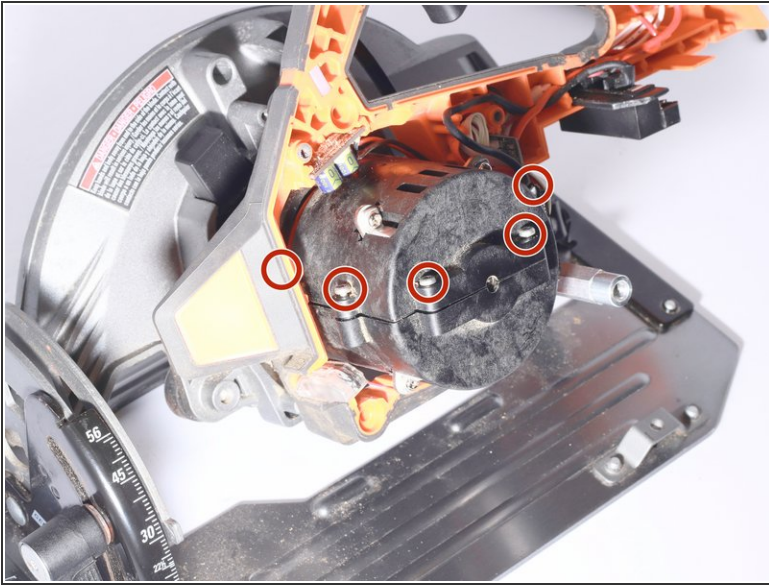
- Flip the saw over.

Step 12



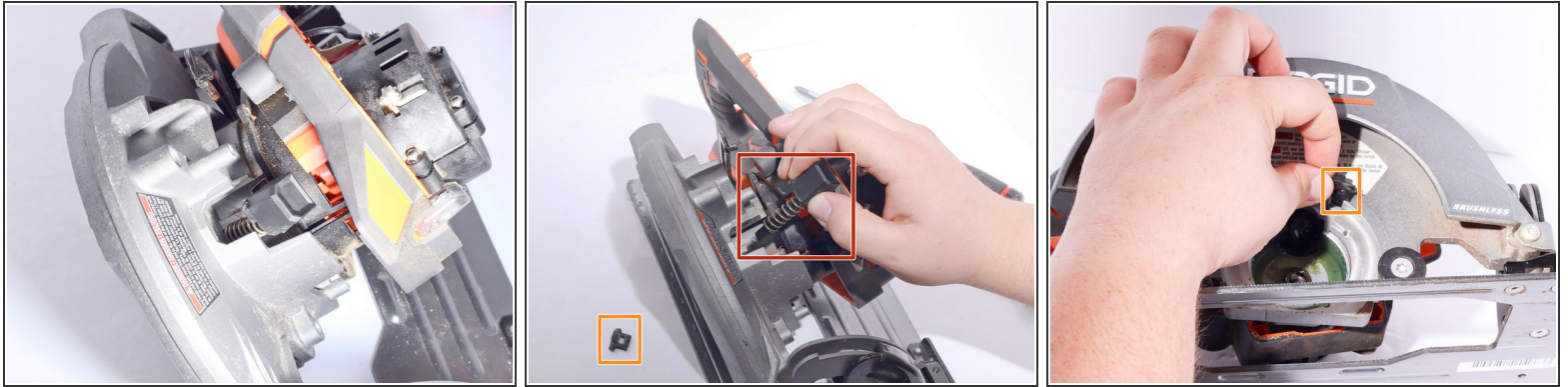
- Remove three 14mm Phillips #2 screws located around the base of motor housing.
- ⓘ These 3 screws are held in place with a thread adhesive. Use a screwdriver with a thick handle to provide sufficient torque to loosen and remove them.

Step 13



- Loosen five 10mm Torx T10 Safety screws located around the motor casing to allow both halves of the motor casing to separate slightly.
 - ⓘ It is not necessary to completely remove the screws, but at least 4-5 threads should be visible.
- Pulling the lower housing away from the metal blade shroud to access the last Torx T10 Safety screw in the motor casing. It is found near the hexagonal rod at the back of the handle.

Step 14



- With both halves of the motor casing loose, pull the motor housing away from the saw. The motor housing does not need to be fully removed, just moved enough to allow for clearance of the Spindle Lock Assembly.
- Remove the Spindle Lock Assembly by tilting the blade lock button away from the metal blade shroud and lifting it out of its channel.
- Keep track of the rubber Dust Cover when removing the Spindle Lock Assembly.
- Inspect the metal linkage for damage below the spring end. Replace it if necessary.
- Inspect the Spindle Lock Assembly channel for sawdust or other debris which may prevent freedom of motion. Clear away any debris in the channel and lubricate with a graphite based lubricant.

To reassemble your device, follow these instructions in reverse order.