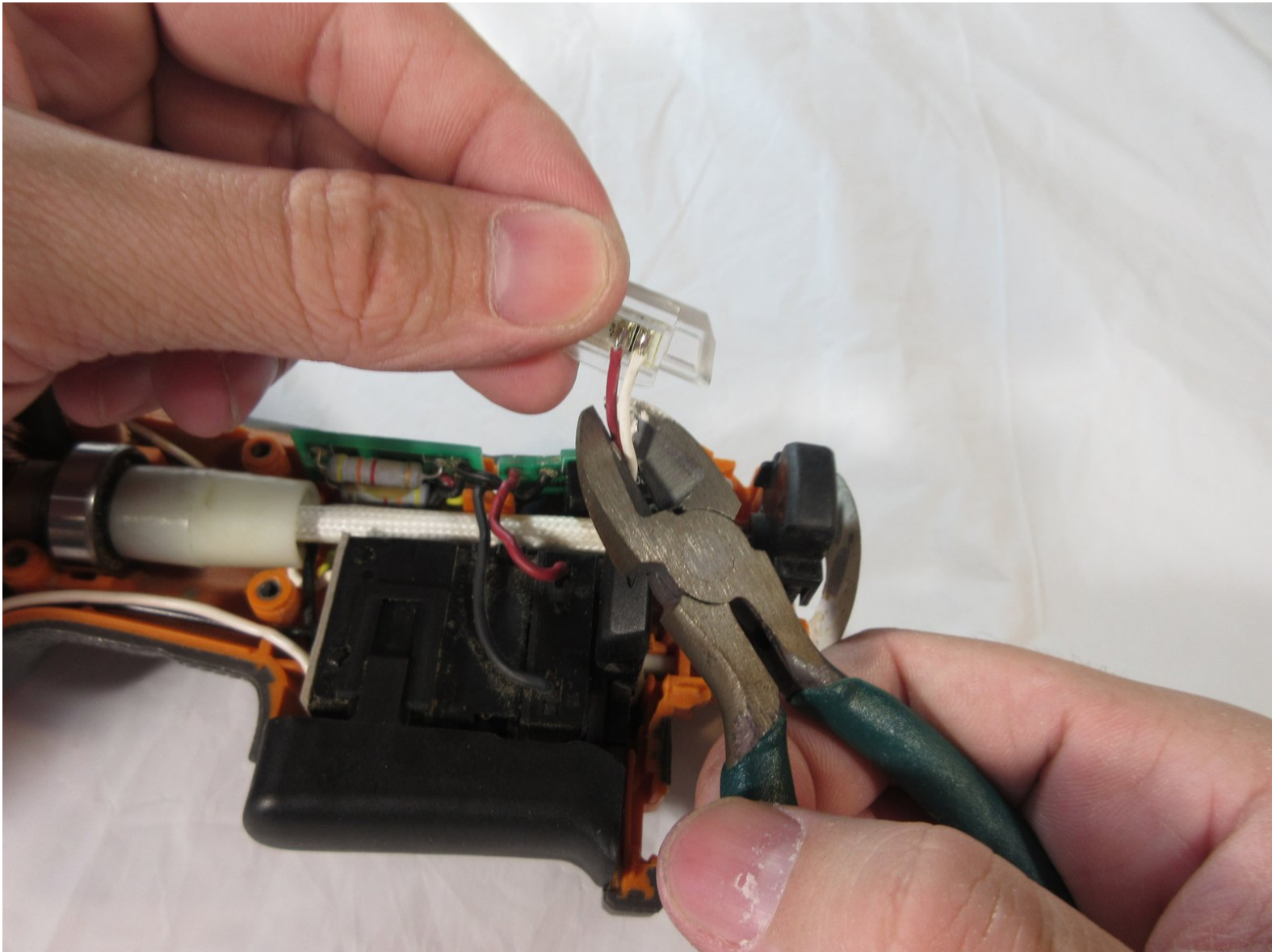




Ridgid JobMax R2851 Series B Front Light Replacement

This guide will assist in replacing the front light of your Ridgid JobMax R2851 Series B.

Written By: Brent Shepherd



INTRODUCTION

This guide is for replacing the front light on the Ridgid JobMax R2851 Series B. This guide would be helpful if the front light of the device has gone out, and you want to replace it.

This repair requires minimal tools listed in the guide, and can be done in a short amount of time. Additionally you should remember to unplug your device before starting any repairs to avoid risk of being electrocuted.



TOOLS:

- [T10 Torx Screwdriver](#) (1)
 - [Soldering Iron](#) (1)
 - [iFixit Tech Knife](#) (1)
 - [Flush Wire Cutters](#) (1)
-

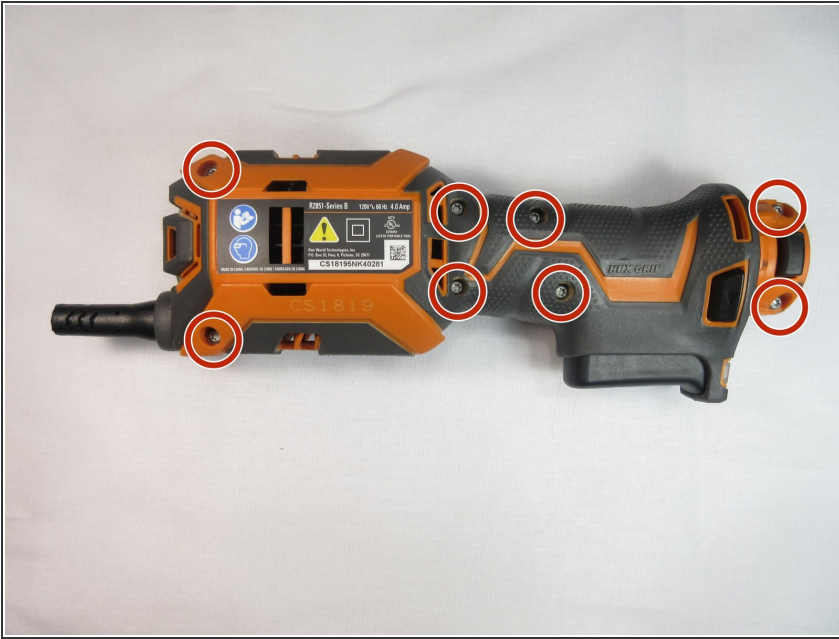
Step 1 — Front Light



 Unplug the device from the wall.

- Orient the device so that the trigger is facing downwards.
- Place your thumb and index finger on the two buttons located on the head of the tool.
- Press the two buttons in and pull the head of the tool off.

Step 2



- Loosen all eight 15mm T10 Torx screws.
- ⓘ You do not need to fully remove the screws yet; just loosen them enough that the device shell starts to open.

Step 3



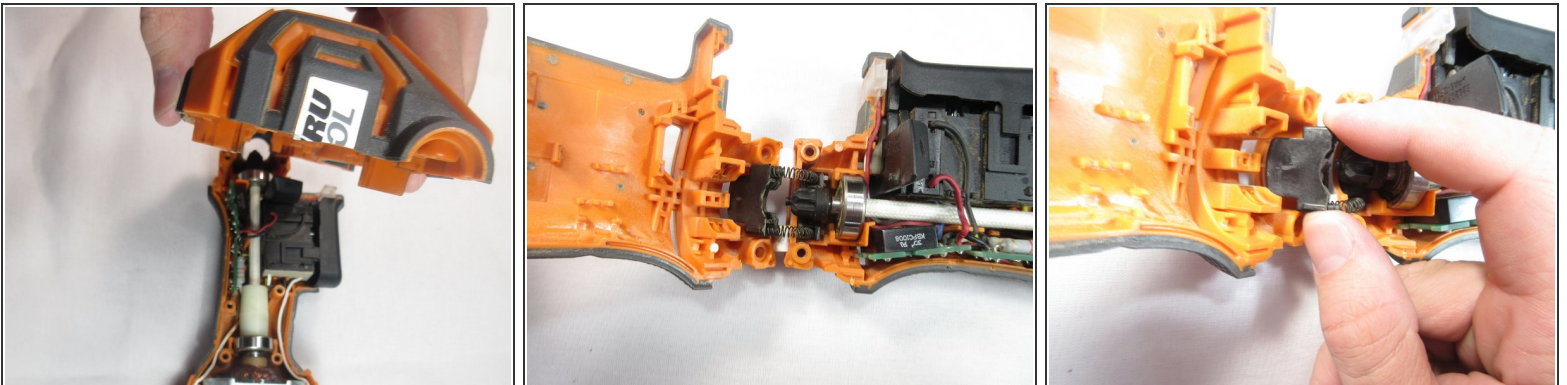
- Orient the device so that the cord end is facing upwards.
- Take a small cutting tool, and cut down the seam in the back, ensuring that you only cut the sticker.
- ⚠ Make a shallow cut to avoid damaging internal hardware.

Step 4



- Completely remove all eight 15mm T10 Torx screws.

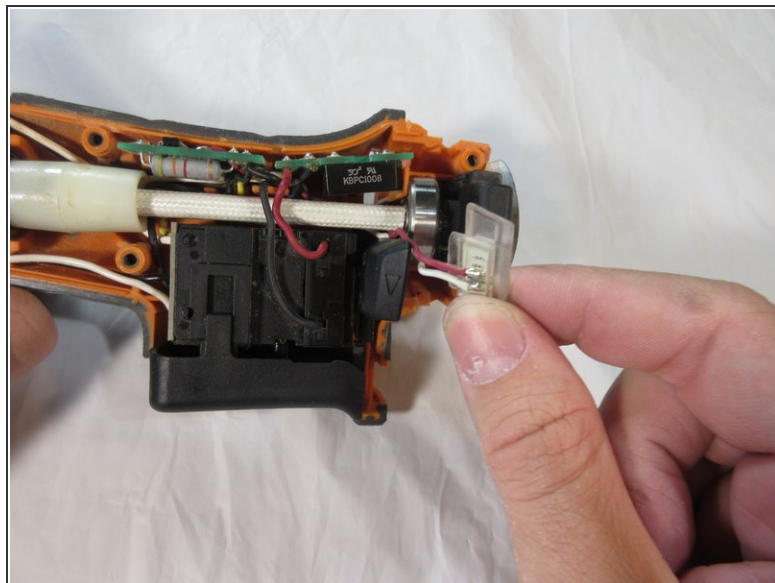
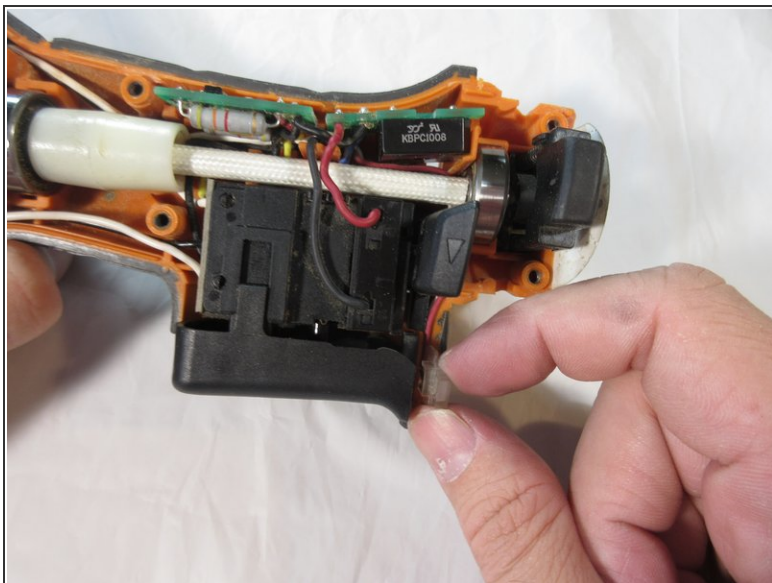
Step 5



- Pull the device case off, gripping at the back of the case and rotating it towards the front of the device.
- Once the device has been separated gently pull on the trigger assembly to remove it from one side of the case.

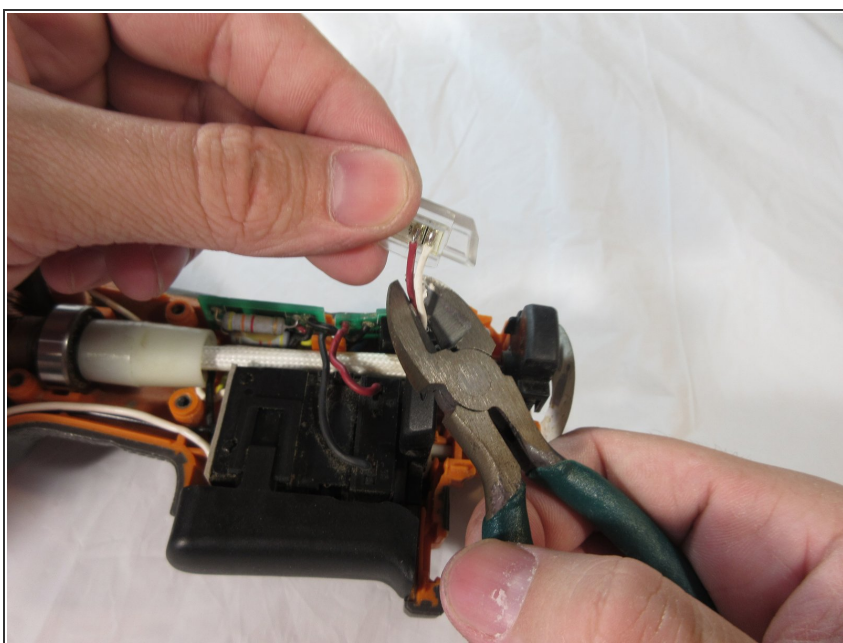
⚠ Watch out for the locking mechanism for the head of the device when removing.

Step 6



- Once the device is apart, grab the LED light located in front of the trigger.
- Slide the light upwards and out, freeing it from the device.

Step 7



- Once the light is free snip the wires and replace.
- ★ A [soldering iron](#) will be needed when installing a new LED.

To reassemble your device, follow these instructions in reverse order.