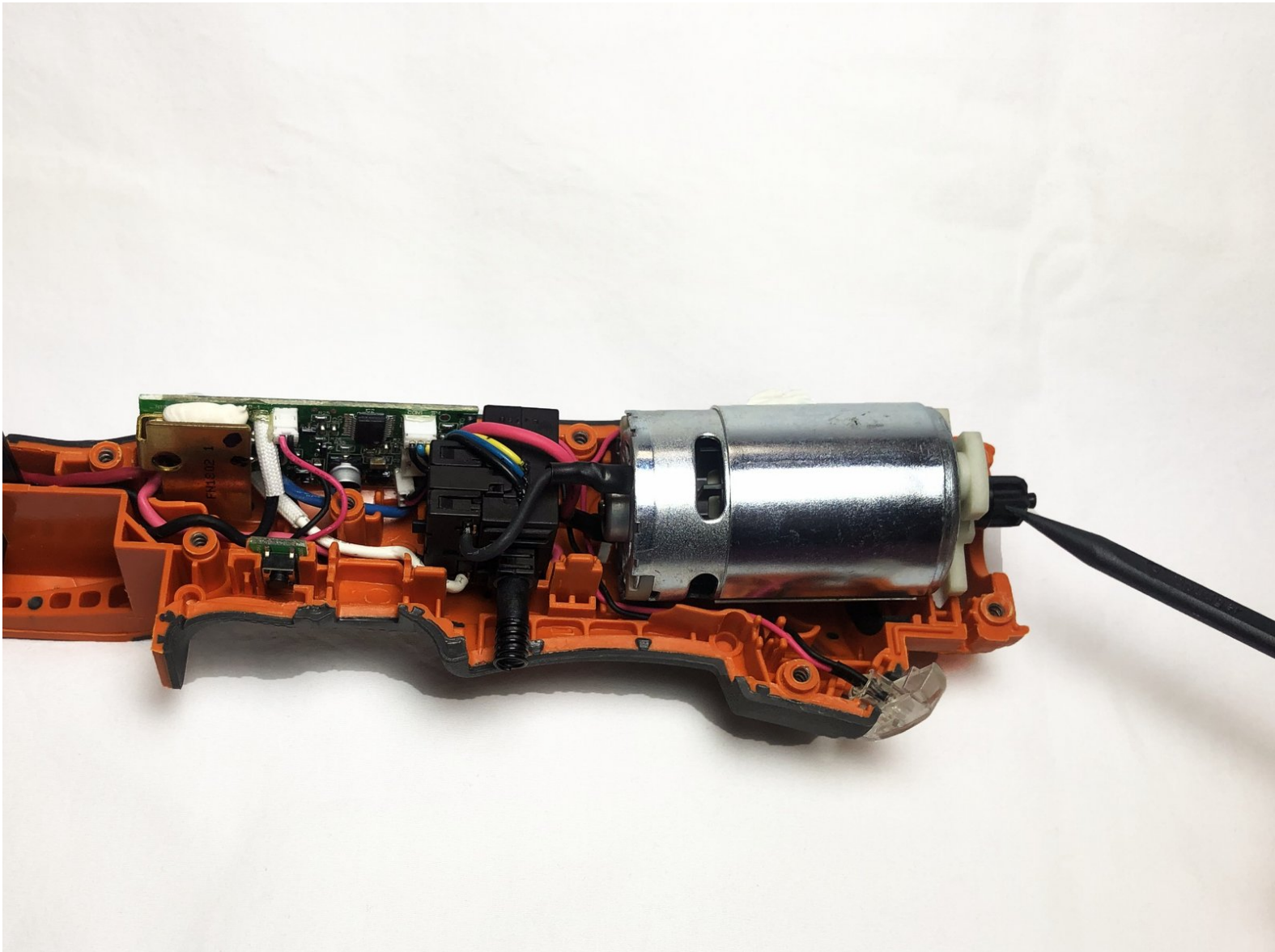




Ridgid JobMax R8620 Series E Drive Gear Cover Replacement

How to replace Drive Gear Cover of Ridgid JobMax R8620 Series E

Written By: Pengjian Zhou



INTRODUCTION

The Drive Gear Cover for the Ridgid JobMax R8620 Series E is a crucial part of the device because it allows you to have control. If it is not working properly, please view this guide to see how to replace it.



TOOLS:

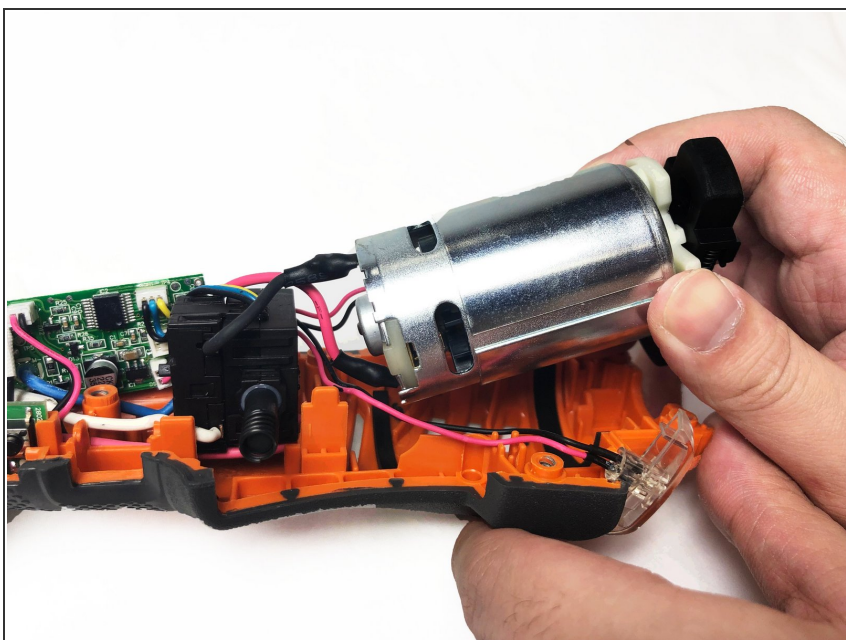
- [T10 Torx Screwdriver](#) (1)
 - [Spudger](#) (1)
 - [Phillips #0 Screwdriver](#) (1)
-

Step 1 — Drive Gear Cover



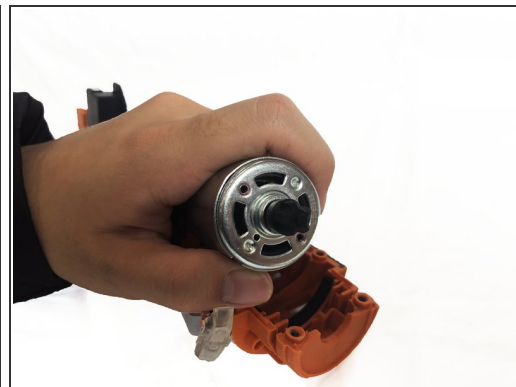
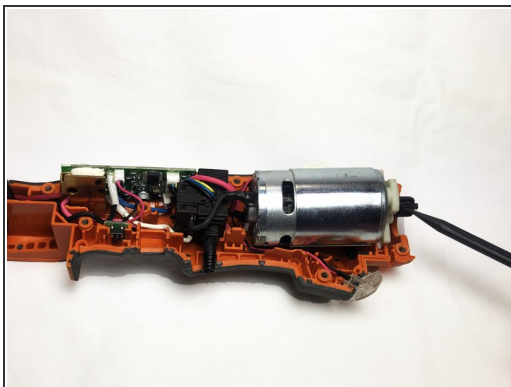
- Pull the battery out of the case by hand before opening the device.
- Using a Torx T10 screwdriver, remove the nine 6mm screws on the drill cover.
- Lift off the outer casing.

Step 2



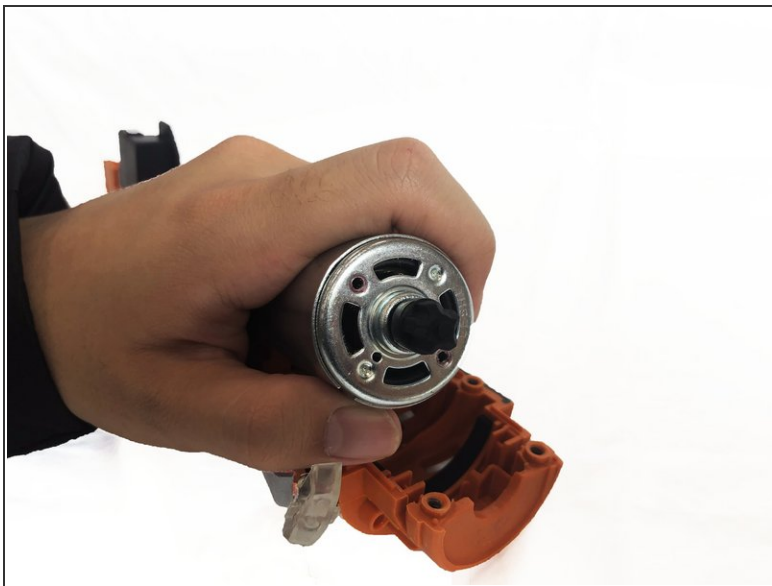
- After opening the cover, find the motor and pry it apart from the case in order to have space to do the replacement.

Step 3



- Find the gear cover.
- Using a Phillips #0 screwdriver, remove the two screws on the plastic protective plate.
- Remove the plastic plate.

Step 4



- Carefully pull off the gear cover.

To reassemble your device, follow these instructions in reverse order.