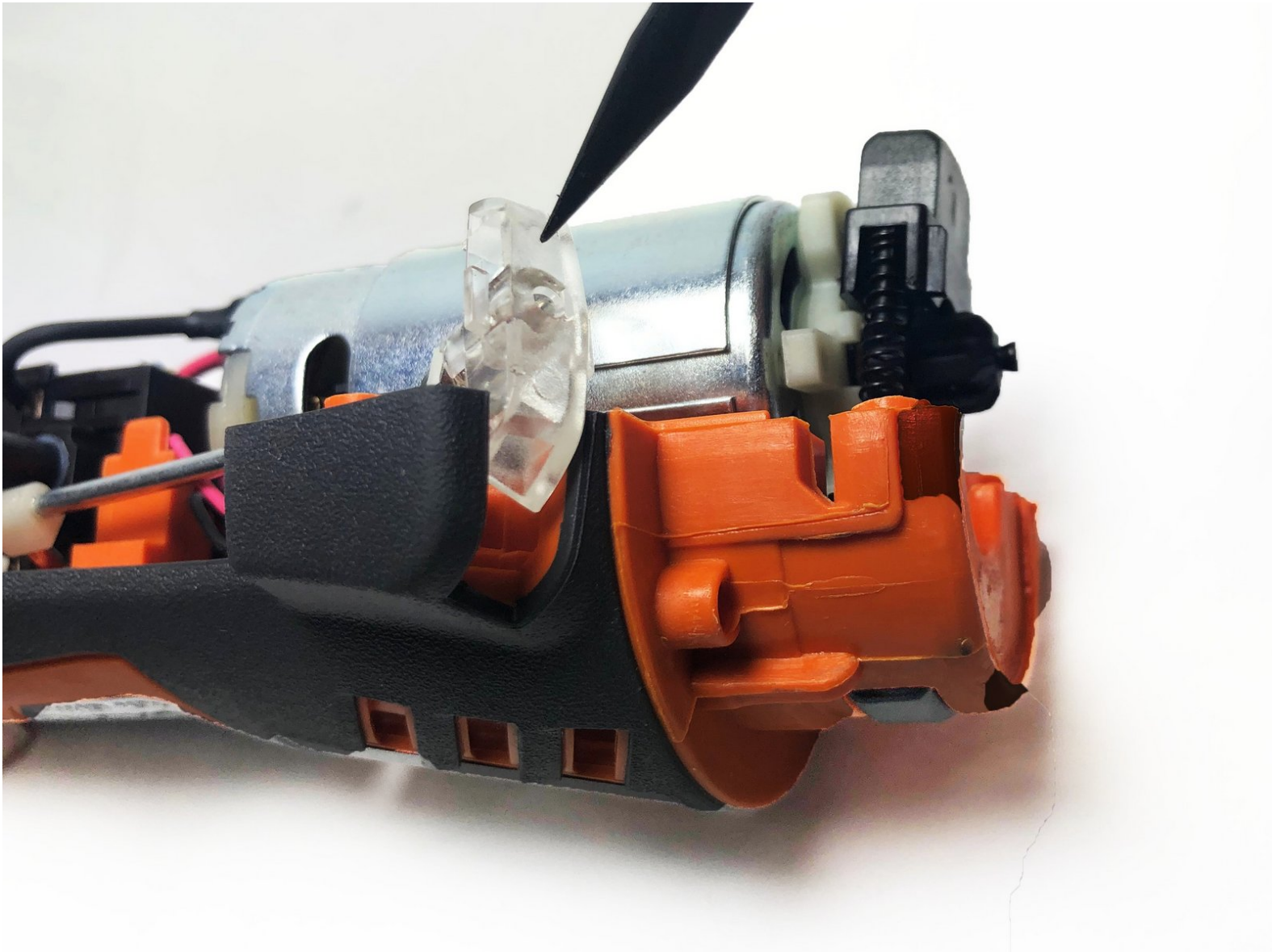




Ridgid JobMax R8620 Series E LED Grip Light Replacement

How to replace LED Light of Ridgid JobMax R8620 Series E

Written By: Pengjian Zhou



INTRODUCTION

The Ridgid JobMax R8620 Series E has a built in LED light on the right side of the device. If the light is dim or not turning on, then you might need to replace the LED light. This guide will give you step-by-step instructions on how to replace the LED light.

TOOLS:

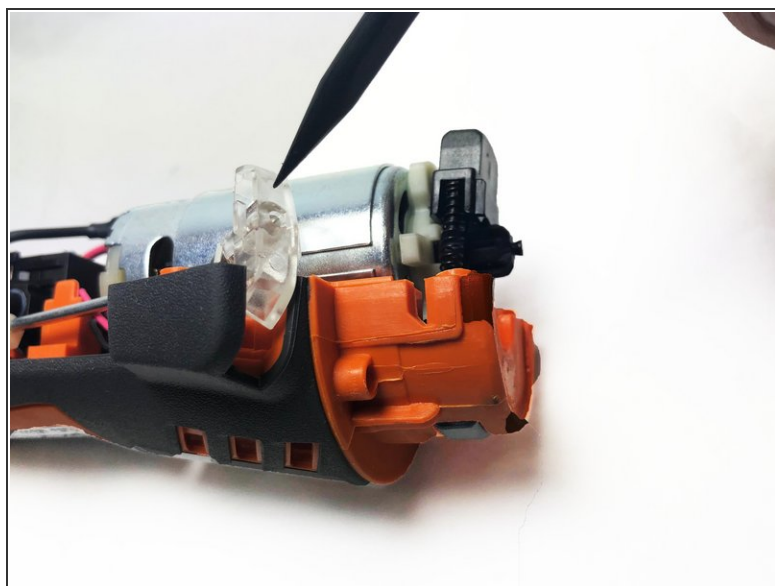
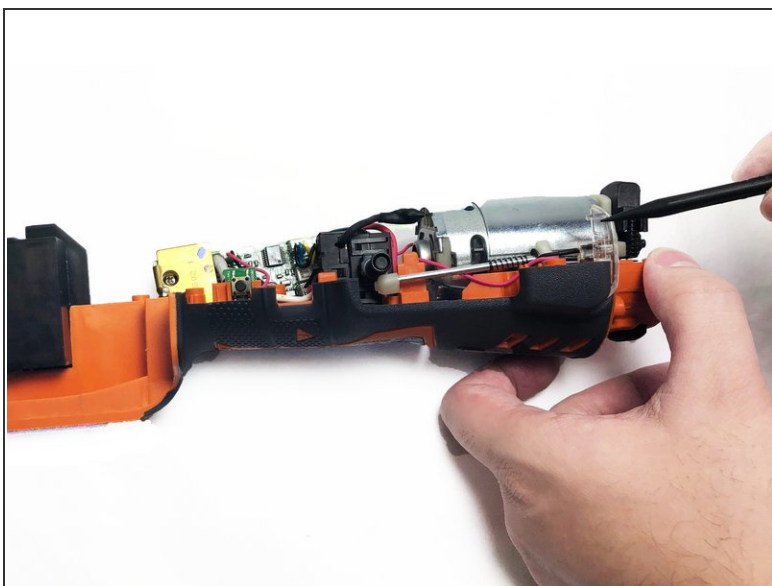
- [T10 Torx Screwdriver](#) (1)
 - [Spudger](#) (1)
 - [Tweezers](#) (1)
-

Step 1 — LED Light



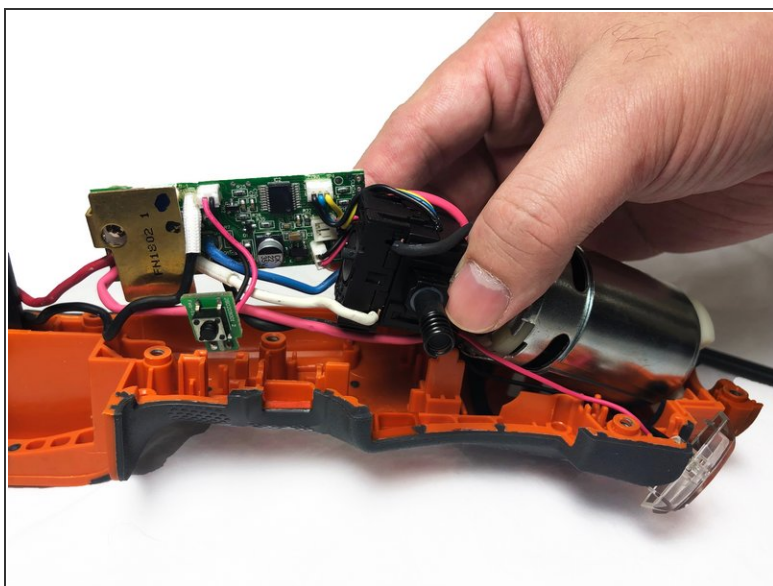
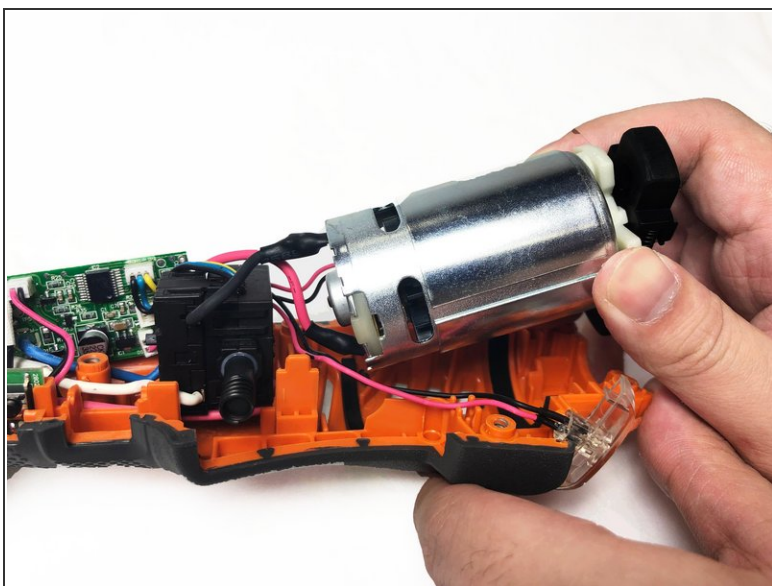
- Pull the battery out of the case by hand before opening the device.
- Using a Torx T10 screwdriver, remove the nine 6mm screws on the drill cover.
- Lift off the outer casing.

Step 2



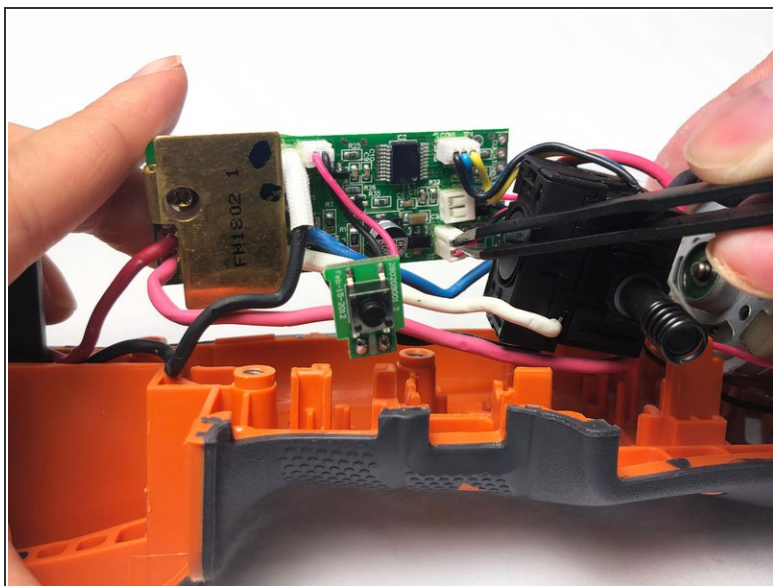
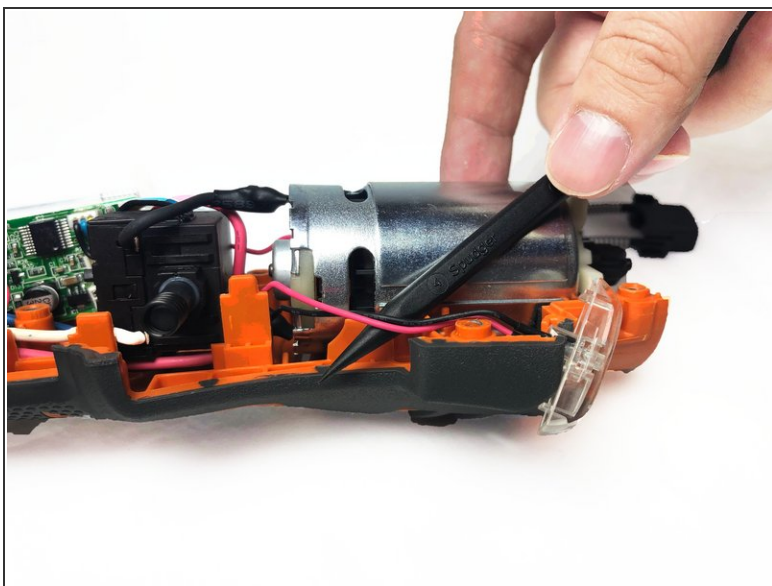
- Using a spudger or your fingers, remove the LED light from the groove in the handle.

Step 3



- Carefully remove the motor as well as the main board from the drill cover.

Step 4



- Find the corresponding position of the LED line on the motherboard. If necessary, use tweezers to pull it out and replace it.

To reassemble your device, follow these instructions in reverse order.