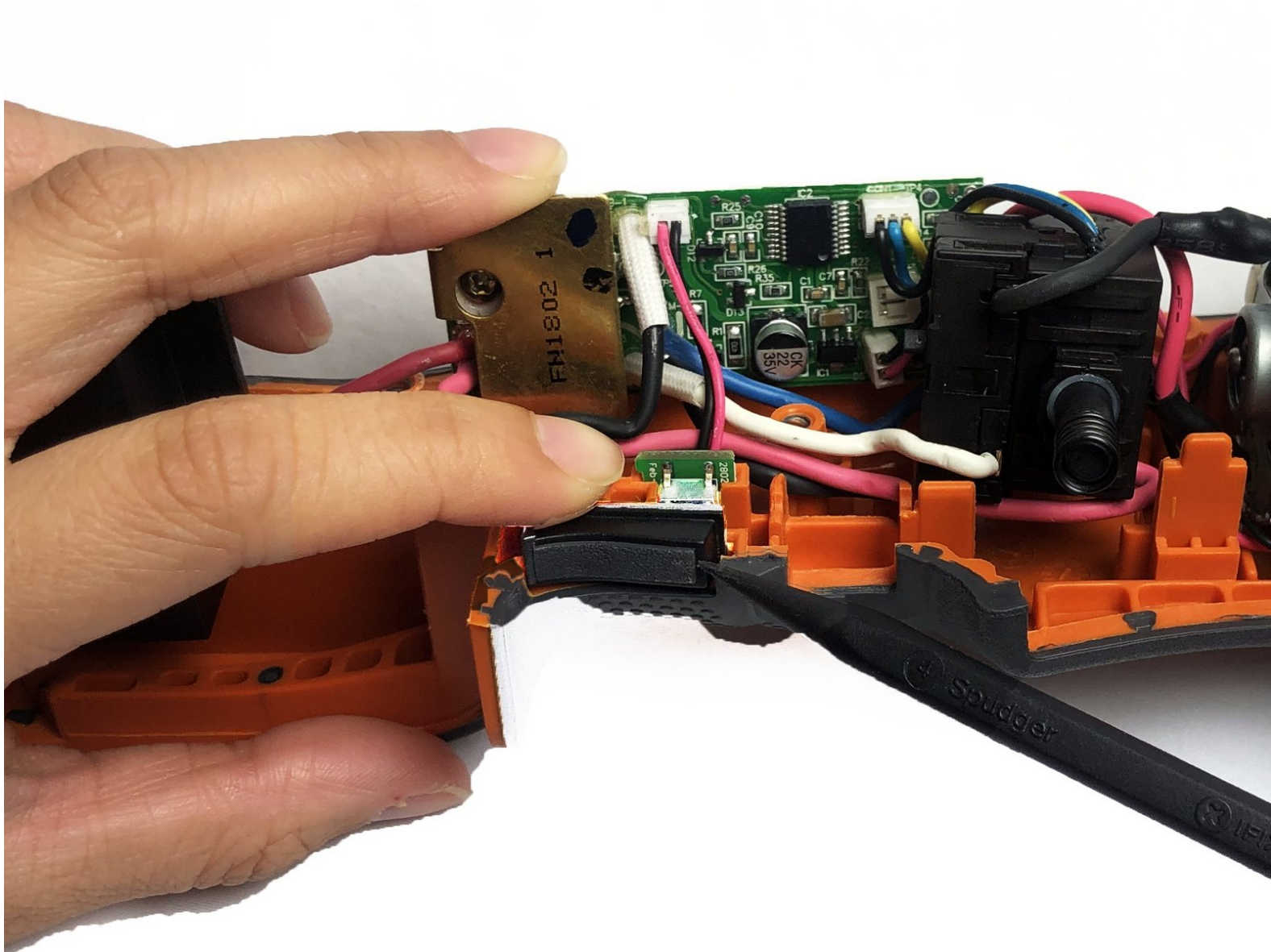




Ridgid JobMax R8620 Series E LED Grip Light Switch Replacement

How to replace LED Grip Light Switch of Ridgid JobMax R8620 Series E

Written By: Pengjian Zhou



INTRODUCTION

Ridgid JobMax R8620 Series E has a built-in LED light that is controlled by a switch trigger. If your LED light is functioning properly but is not turning on, it is likely that there is a problem with this switch.



TOOLS:

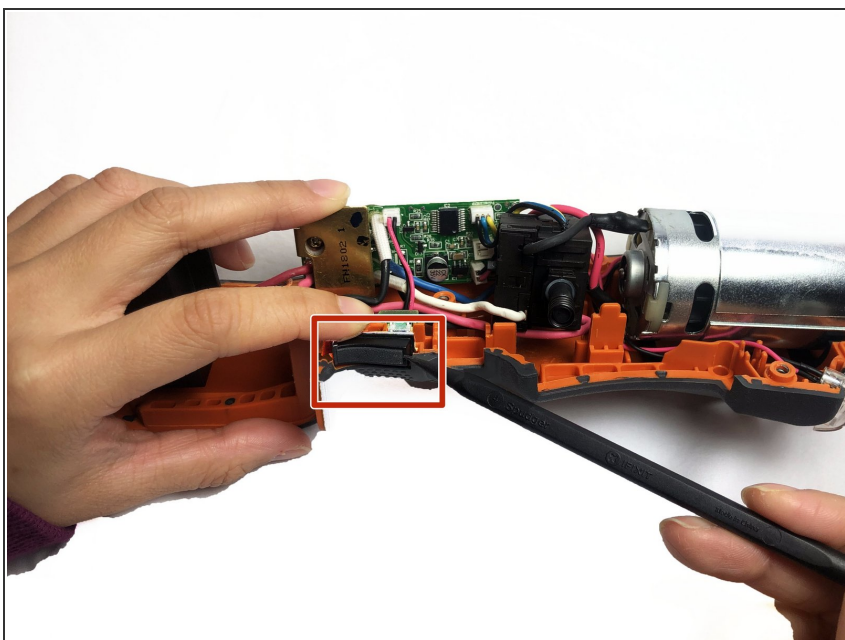
- [T10 Torx Screwdriver](#) (1)
 - [Spudger](#) (1)
 - [Tweezers](#) (1)
-

Step 1 — LED Grip Light Switch



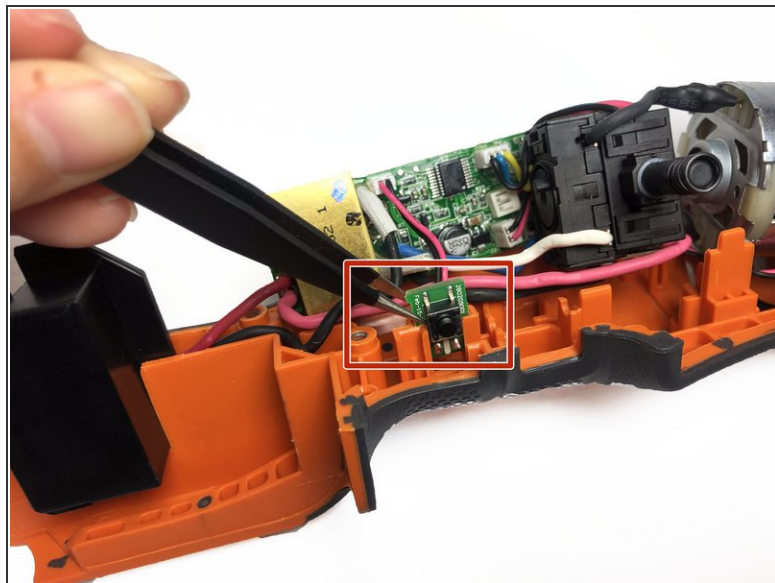
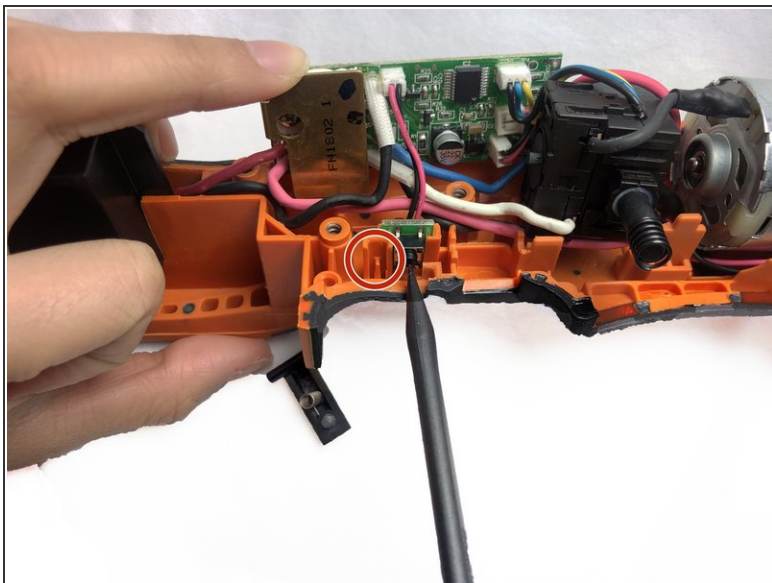
- Pull the battery out of the case before opening the device.
- Remove the nine 6mm screws on the drill cover using a Torx T10 screwdriver.
- Lift off the outer casing.

Step 2



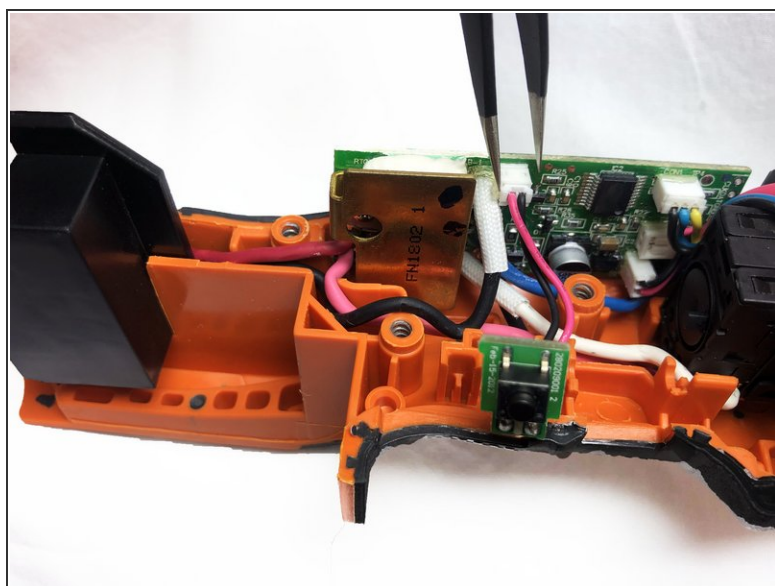
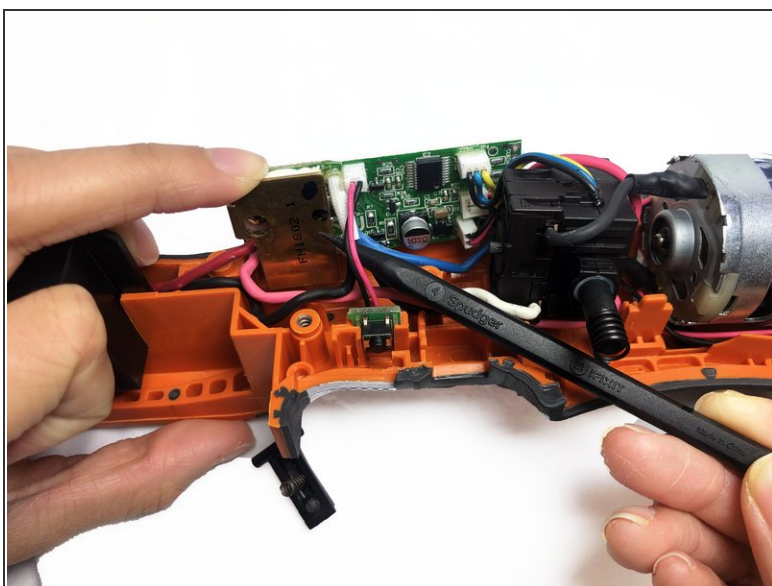
- Locate the LED grip light switch at the waist of the device.

Step 3



- Remove the plastic switch with the spring from the groove of the housing by hand.
- ❗ Check to see if there are problems with the plastic switch or the spring.

Step 4



- Find the slot on the motherboard along the wiring of the device.
- Use tweezers to pull the plug out of the host slot.

To reassemble your device, follow these instructions in reverse order.