



# Ridgid JobMax R8620 Series E Motor Replacement

How to replace Ridgid JobMax R8620 Series E Motor

Written By: Pengjian Zhou



---

## INTRODUCTION

The motor helps run all the functions on the device and so if it is not working properly please view this replacement guide to learn how to replace the motor.

---

### TOOLS:

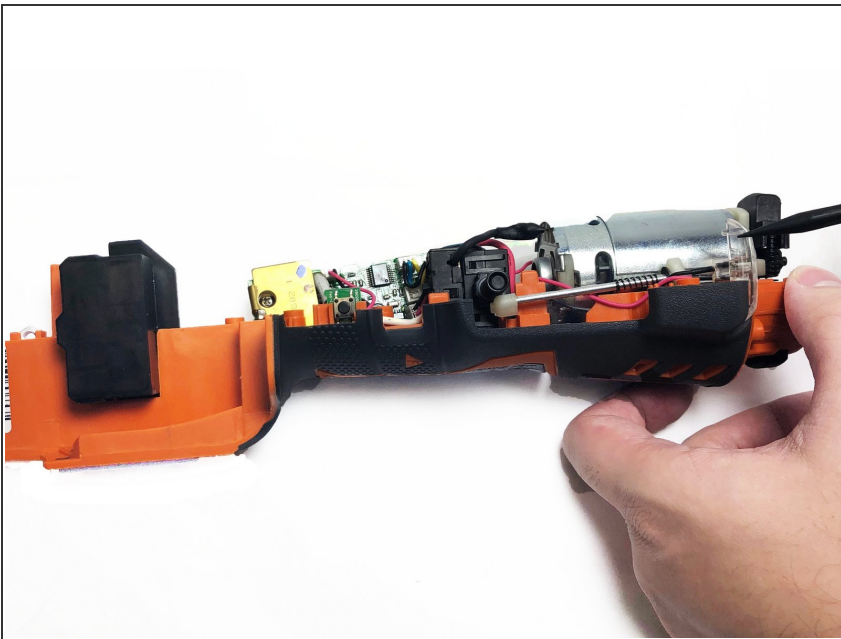
- [54 Bit Driver Kit](#) (1)
  - [Soldering Iron](#) (1)
-

## Step 1 — Motor



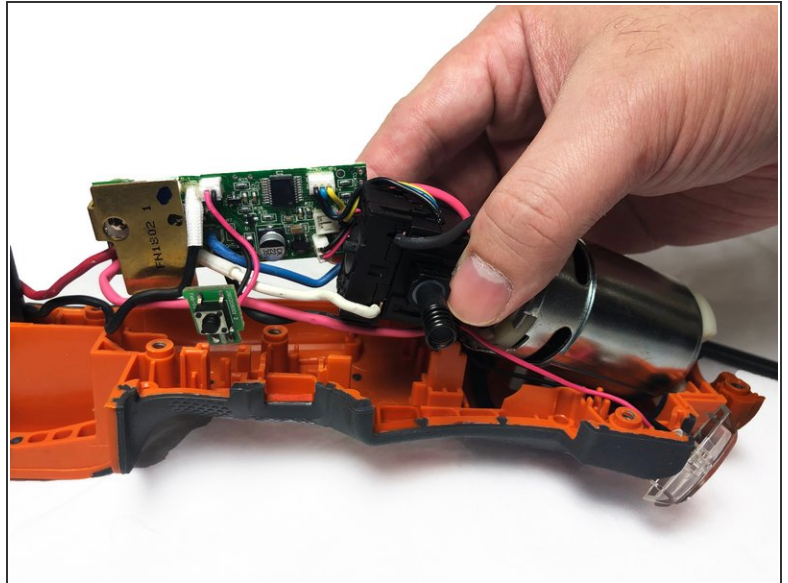
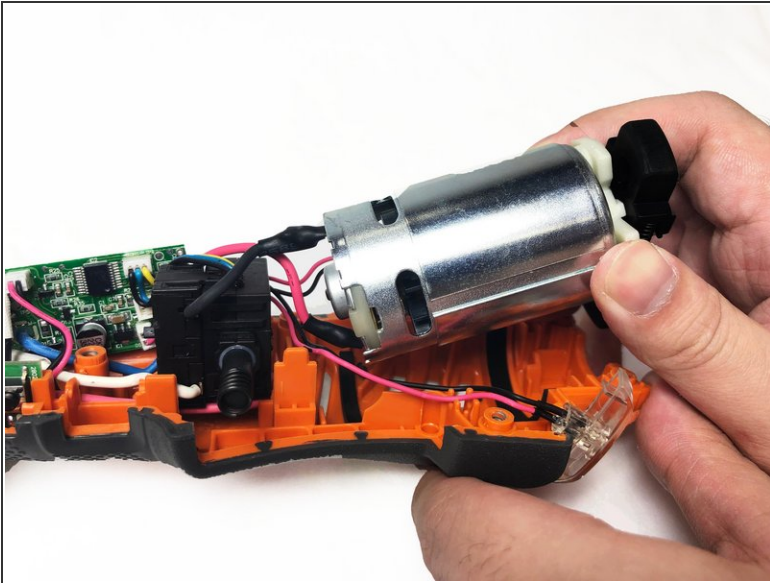
- Pull the battery out of the case by hand before opening the device.
- Using a Torx T10 screwdriver, remove the nine 6mm screws on the drill cover.
- Lift off the outer casing.

## Step 2



- Using a spudger or your fingers, remove the LED light from the groove in the handle.

## Step 3



- Carefully remove the motor as well as the main board from the drill cover.

## Step 4



- Find the black and red wires from the motor.
- Remove the electrical tape using tweezers.
- Using a soldering iron, desolder the black and red wires from the motor.
- Refer to [this helpful guide](#) for tips on soldering/desoldering.

To reassemble your device, follow these instructions in reverse order.