



Ridgid R2601 Motor Assembly Replacement

Use this guide to replace the motor assembly in the Ridgid R2601 rotary sander. The motor may need to be replaced if the sander will not run, or is weak.

Written By: Gary Garner



INTRODUCTION

In this guide, we will replace the motor in the Ridgid R2601 orbital sander. This part is often subject to damage because it is a moving part and can burn up, rendering the sander useless. Before starting this guide, please unplug and turn off the sander.

TOOLS:

- [T20 Torx Screwdriver](#) (1)
 - [T25 Torx Screwdriver](#) (1)
 - [Metal Spudger](#) (1)
 - [T10 Torx Screwdriver](#) (1)
 - [T15 Torx Screwdriver](#) (1)
 - [Flathead 3/32" or 2.5 mm Screwdriver](#) (1)
-

Step 1 — Top Cover



- Remove the four M3.5 x 16 mm screws from the top cover using a Torx T10 screwdriver.

Step 2



- Pull off the top cover.

Step 3 — Bearing



- Turn the sander upside down so that the base faces you.
- Remove the four 6.4 mm screws from the bottom of the base using a Torx T-25 screwdriver.

Step 4



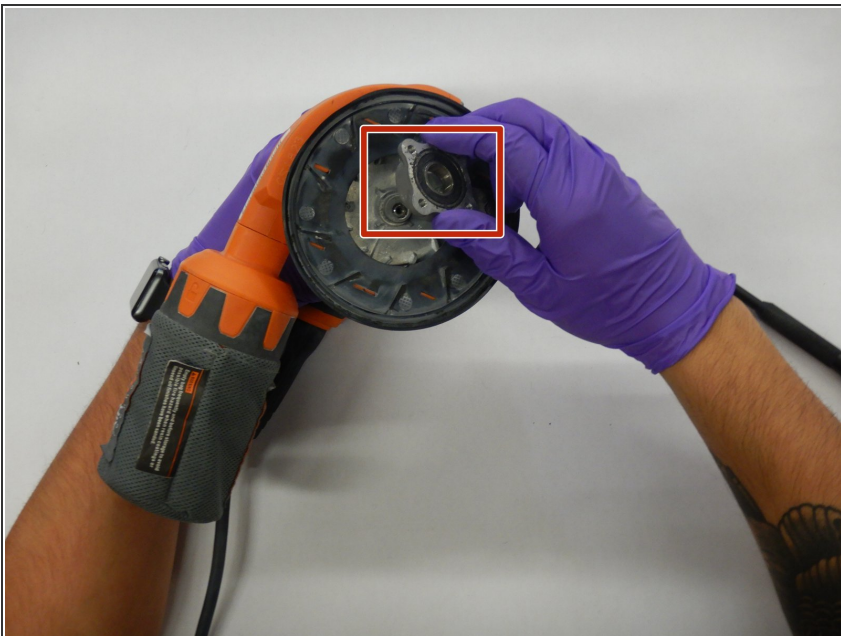
- Remove the base.

Step 5



- Remove the 10 mm screw from the center of the bearing using a Torx T-20 screwdriver.

Step 6



- Remove the bearing.

Step 7 — Brake



- Remove the four 16mm screws from the side of the sander using a Torx T20 screwdriver.

Step 8



- Use a metal spudger to open the sander's plastic housing.

Step 9



- Remove the plastic housing.

Step 10



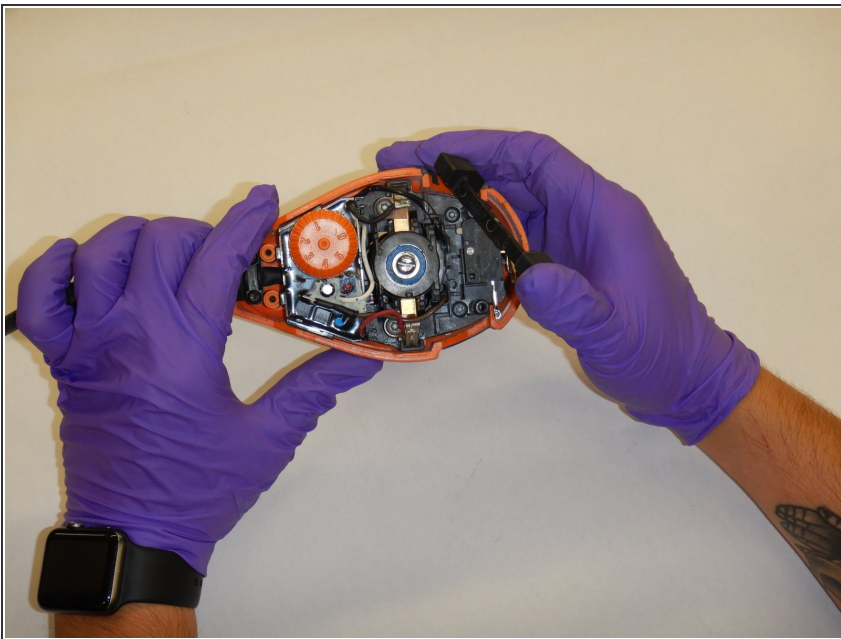
- Remove the brake from its slot in the housing.

Step 11 — Motor Assembly



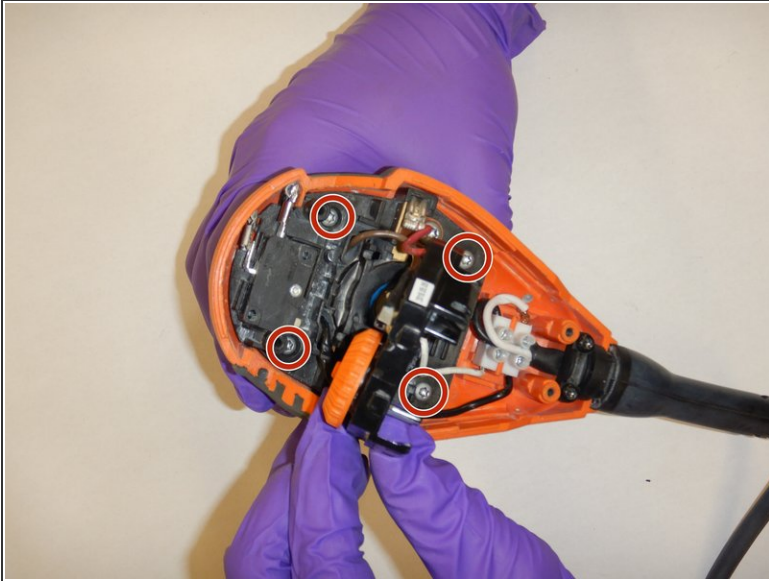
- Remove the metal flywheel.

Step 12



- Rotate the sander so that the top is facing you.
- Remove the power switch.

Step 13



- Use a T20 Torx screwdriver to remove the four 11.11mm screws from the motor housing.
- Use a T25 Torx screwdriver to remove the two 12.7mm screws next to the leads.

Step 14



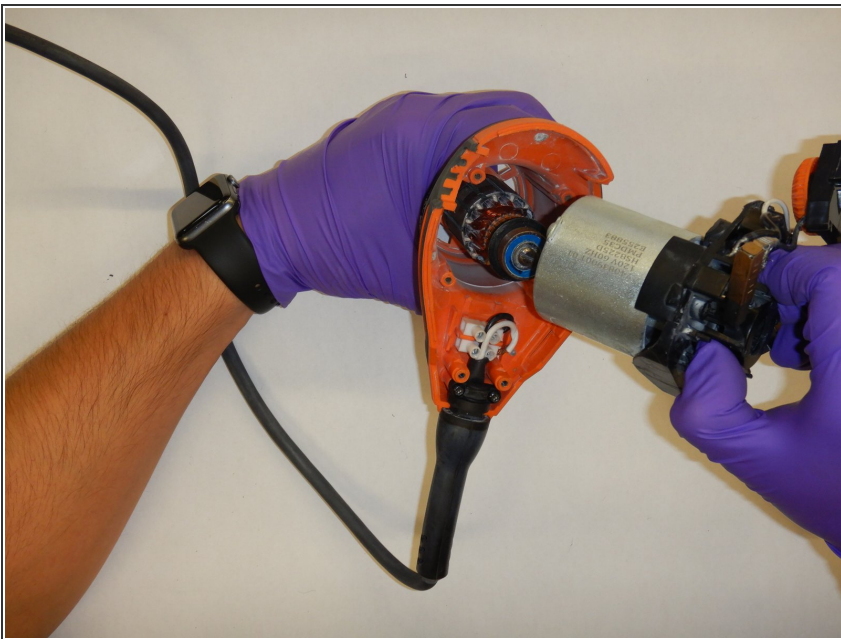
- Use a 2.5mm flathead screwdriver to loosen but not remove the screws holding the wiring leading to the speed controller.

Step 15



- Remove the leads.

Step 16



- Remove the motor housing.

Step 17



- Remove the motor.

To reassemble your device, follow these instructions in reverse order.