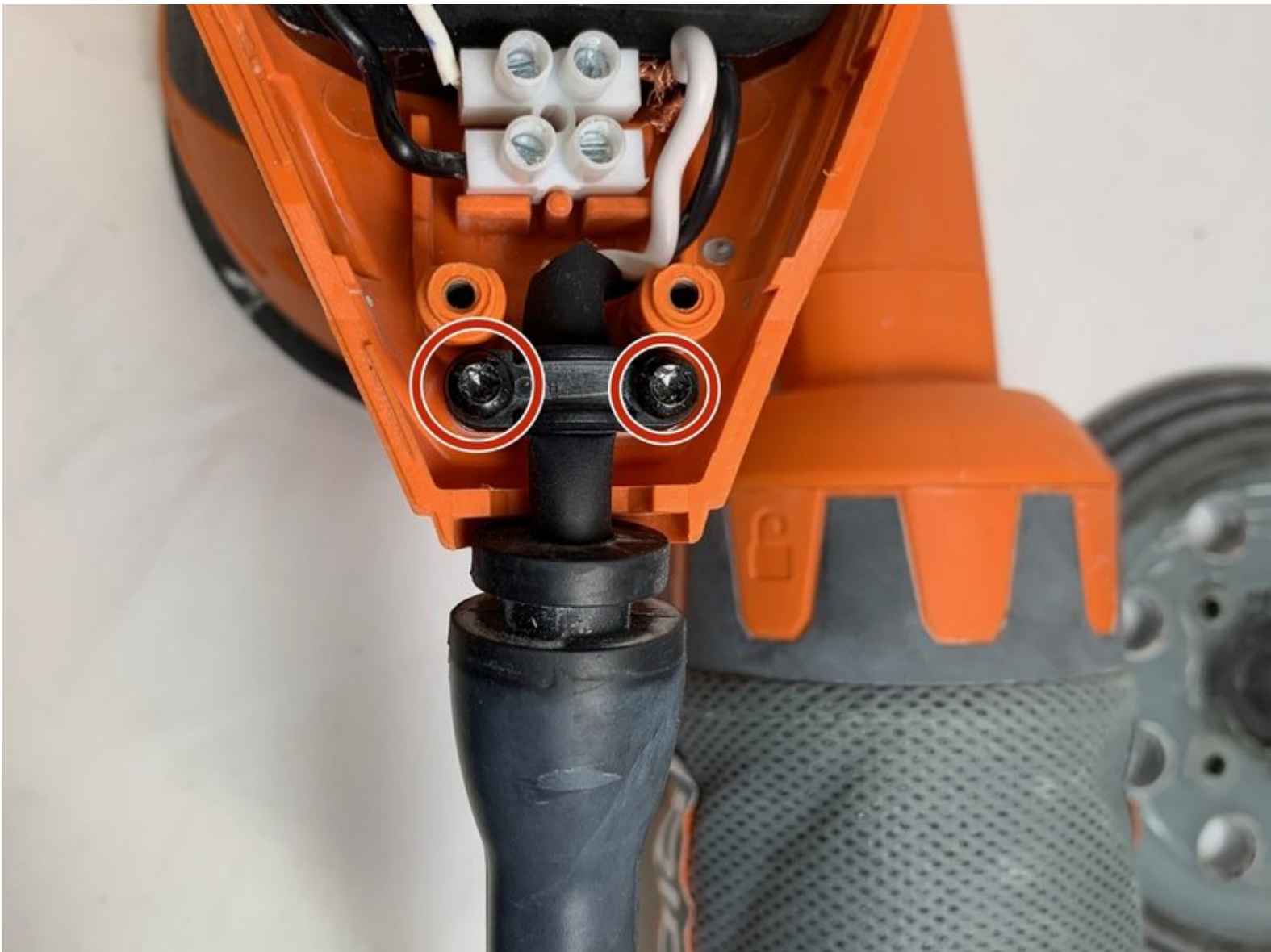




Ridgid R2601 Power Cord Replacement

This guide will serve to show the user how to replace the power cord if the sander will not turn on.

Written By: Ellie Lott



INTRODUCTION

If the sander will not turn on and you have already tried blowing out dust and replacing the switch, the power cord may be at fault. You can easily replace the cord using this guide. You will need a Torx T15 screwdriver, a Torx T10 screwdriver, and a small flathead screwdriver. Be sure that the device is unplugged when completing this replacement.



TOOLS:

- [T10 Torx Screwdriver](#) (1)
- [Flathead Screwdriver](#) (1)
- [T15 Torx Screwdriver](#) (1)

Step 1 — Top Cover



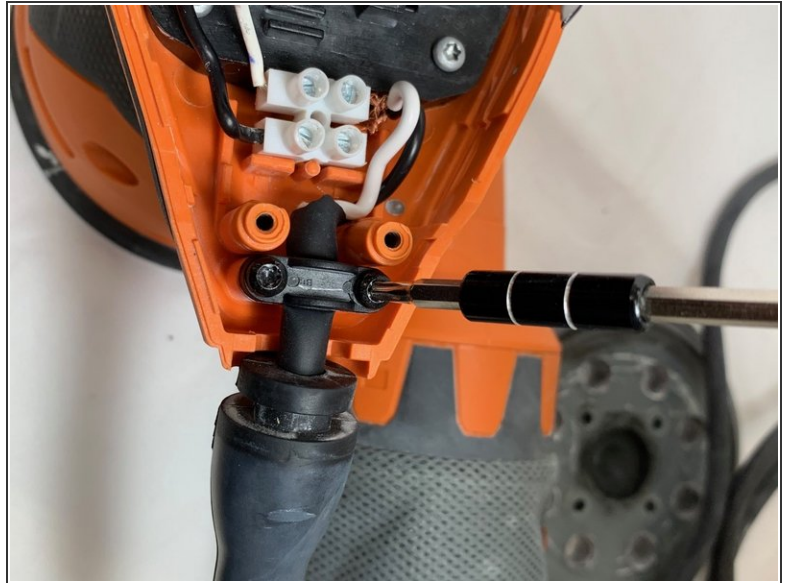
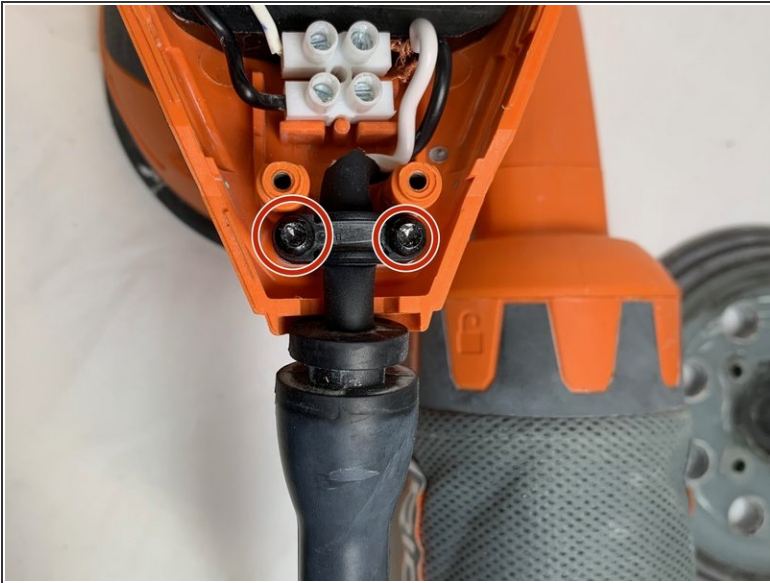
- Remove the four M3.5 x 16 mm screws from the top cover using a Torx T10 screwdriver.

Step 2



- Pull off the top cover.

Step 3 — Power Cord



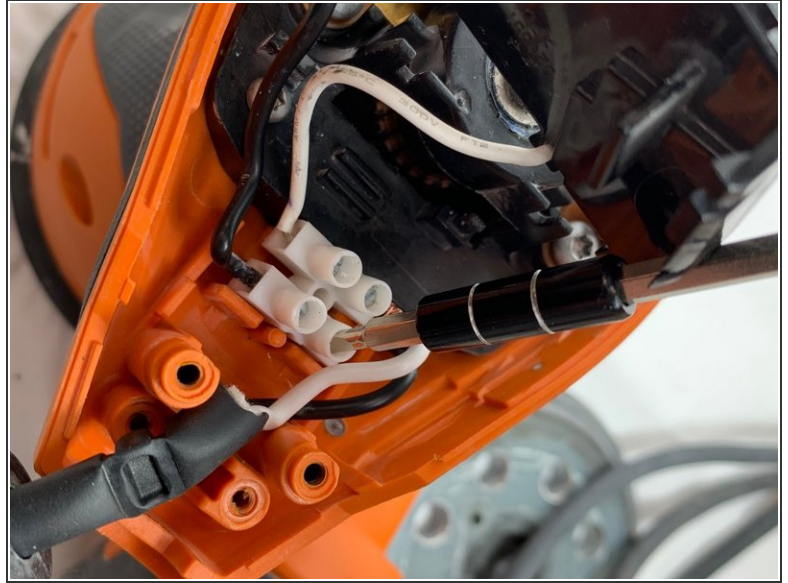
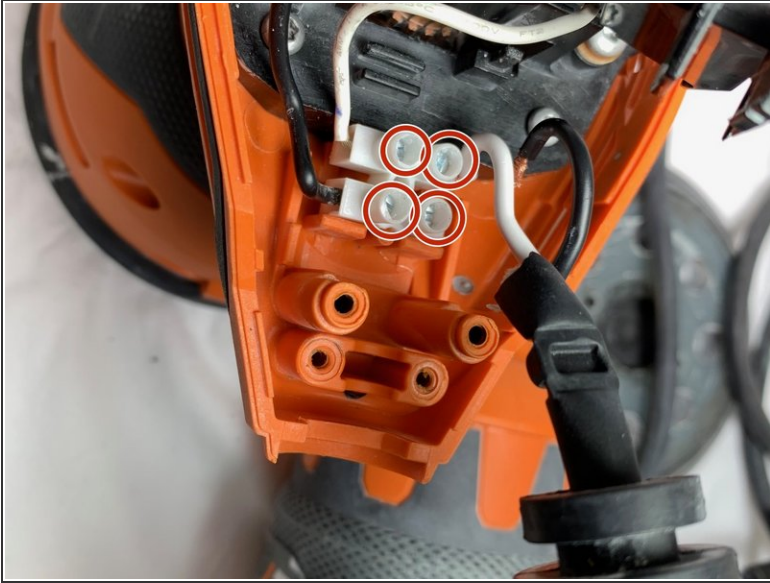
- Remove the two #6-19 x 15mm screws on the black retaining bracket using a Torx T15 screwdriver.

Step 4



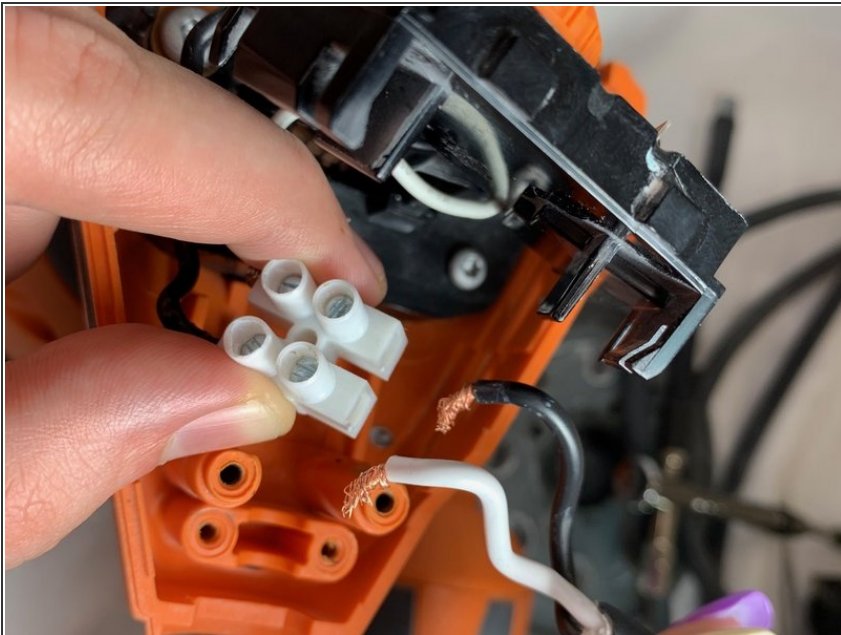
- Pop out and remove the black retaining bracket with your fingers.

Step 5



- Loosen the screws in the white terminal block with a small flathead screwdriver. Note that you do not need to fully unscrew and remove them.

Step 6



- Pull the wiring out from the white cover. The power cord can now be replaced by completing these steps in reverse.

To reassemble your device, follow these instructions in reverse order.