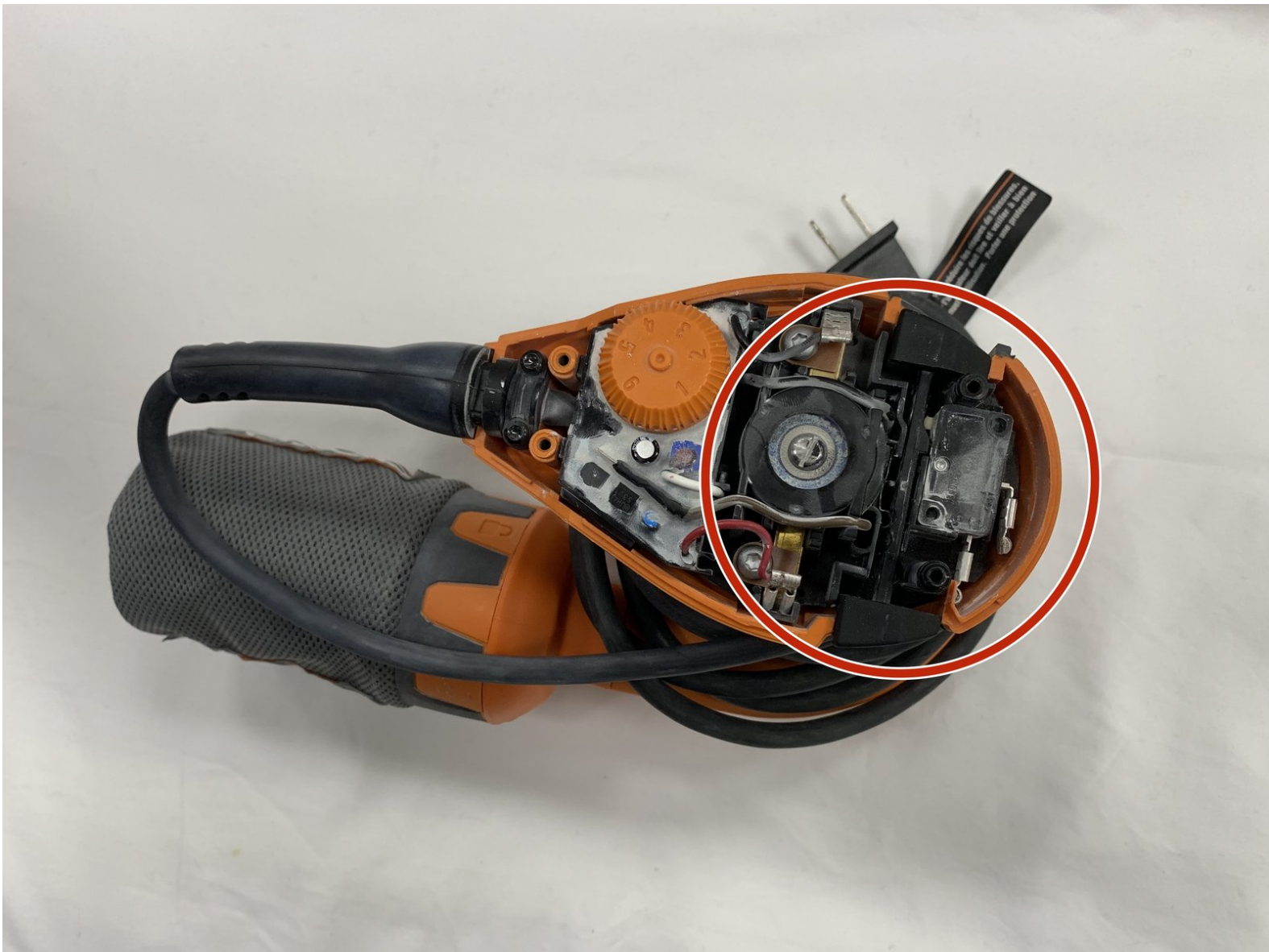




Ridgid R2601 Power Switch Replacement

If the device will not turn on, the power switch could be at fault. This guide will show you how to replace the power switch.

Written By: Ellie Lott



INTRODUCTION

If the device will not turn on, the power switch could be at fault. If you have already tried blowing out dust, you may need to replace the power switch, which this guide will show you how to do. After removing the top cover with a Torx T10 screwdriver, you will only need a metal spudger to remove and replace the switch. Be sure that the device is unplugged when completing this replacement.



TOOLS:

- [T10 Torx Screwdriver](#) (1)
- [Metal Spudger](#) (1)

Step 1 — Top Cover



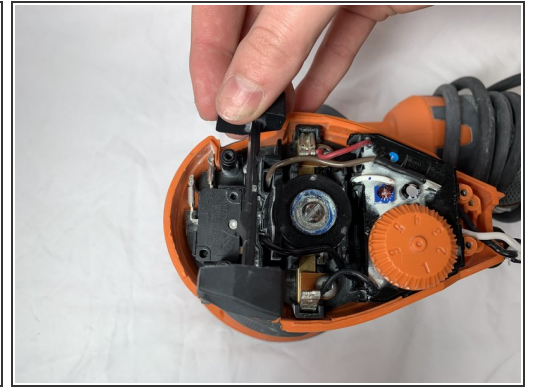
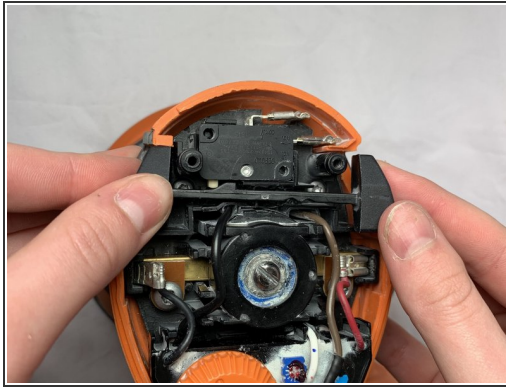
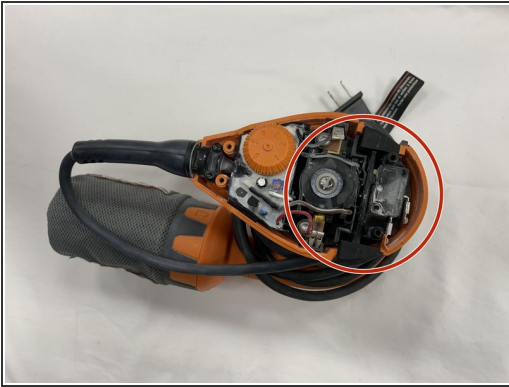
- Remove the four M3.5 x 16 mm screws from the top cover using a Torx T10 screwdriver.

Step 2



- Pull off the top cover.

Step 3 — Power Switch



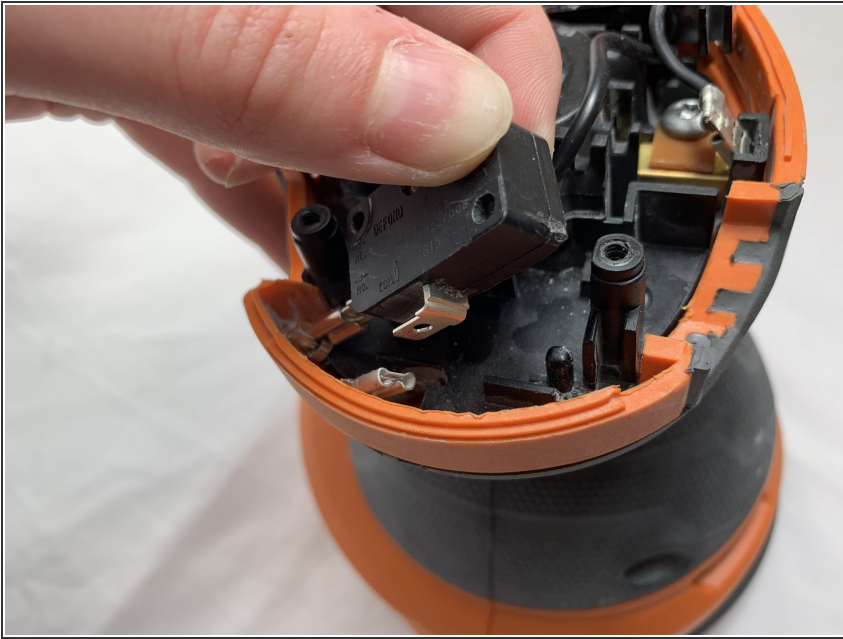
- Remove the plastic switch component by prying it upward with your fingers.

Step 4



- Pry the switch off using a metal spudger to help.

Step 5



- Pull off the wiring to detach the switch. The switch can now be replaced.

To reassemble your device, follow these instructions in reverse order.