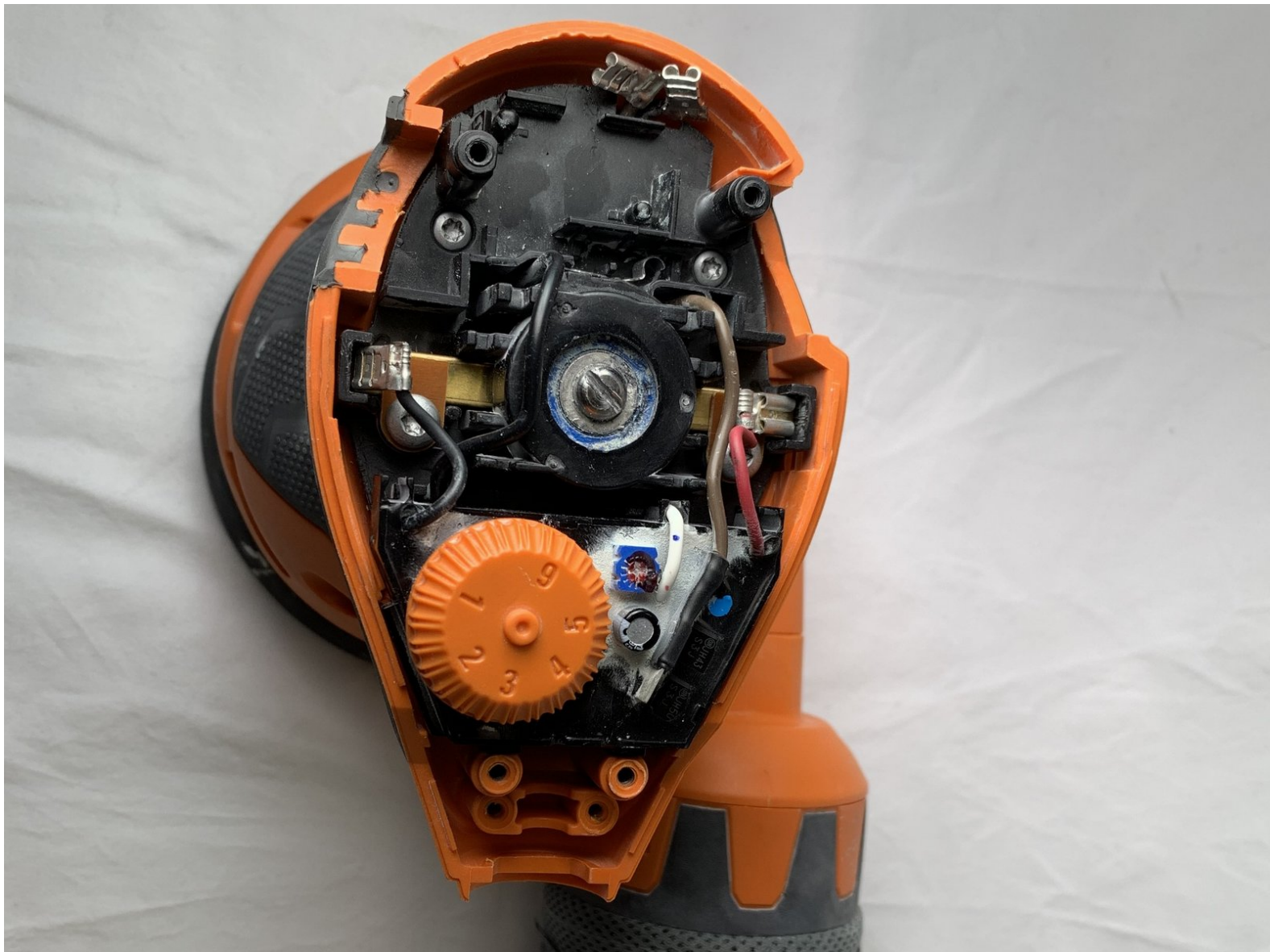




Ridgid R2601 Speed Dial Replacement

If the sander does not respond to the speed dial, the speed dial may be worn down and need to be replaced. You can replace the dial using this guide.

Written By: Ellie Lott



INTRODUCTION

If you are not able to change the speed settings on your sander, the speed dial is probably at fault. The dial can become worn down, meaning that it needs to be replaced. Make sure that the sander is unplugged when completing this replacement.

TOOLS:

- [T10 Torx Screwdriver](#) (1)
-

Step 1 — Top Cover



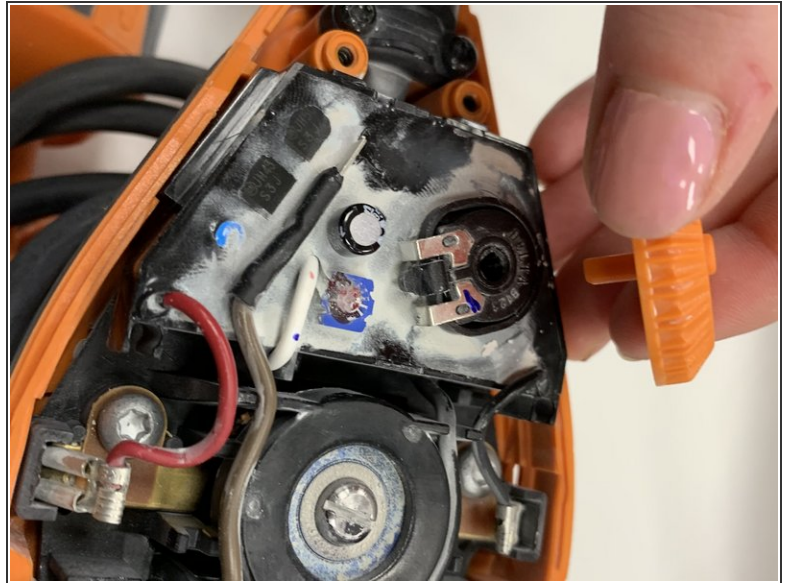
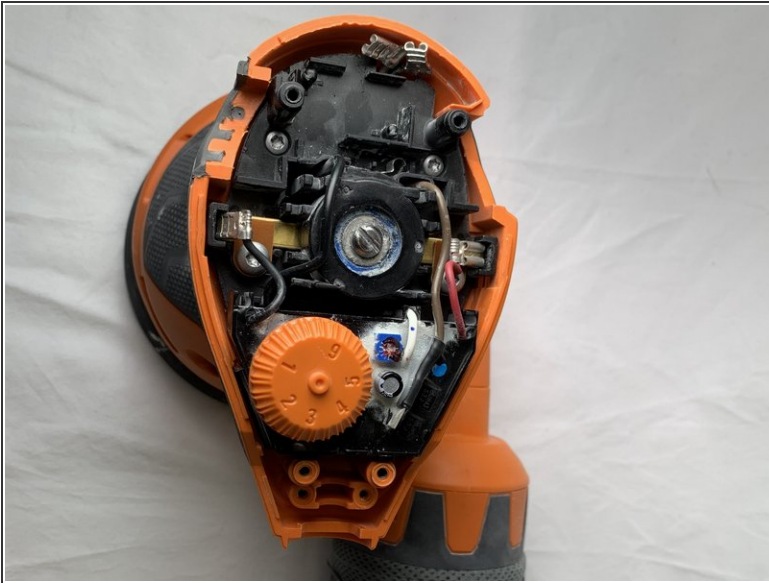
- Remove the four M3.5 x 16 mm screws from the top cover using a Torx T10 screwdriver.

Step 2



- Pull off the top cover.

Step 3 — Speed Dial



- Remove the orange speed dial simply by pulling it out using your hands.

To reassemble your device, follow these instructions in reverse order.