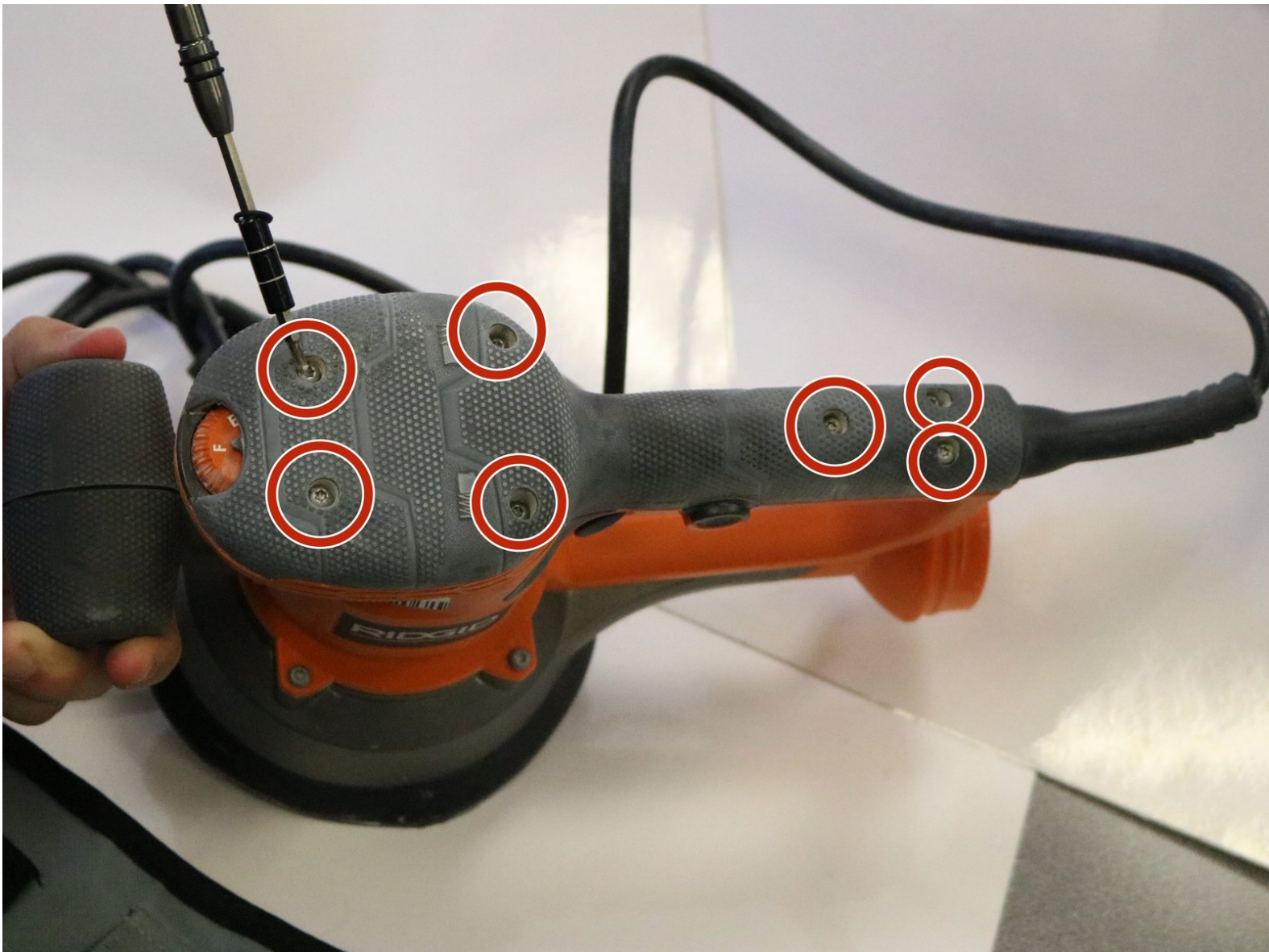




Ridgid R2611 Switch Bracket Replacement

This guide will show how the switch bracket can be easily repaired.

Written By: Ana



INTRODUCTION

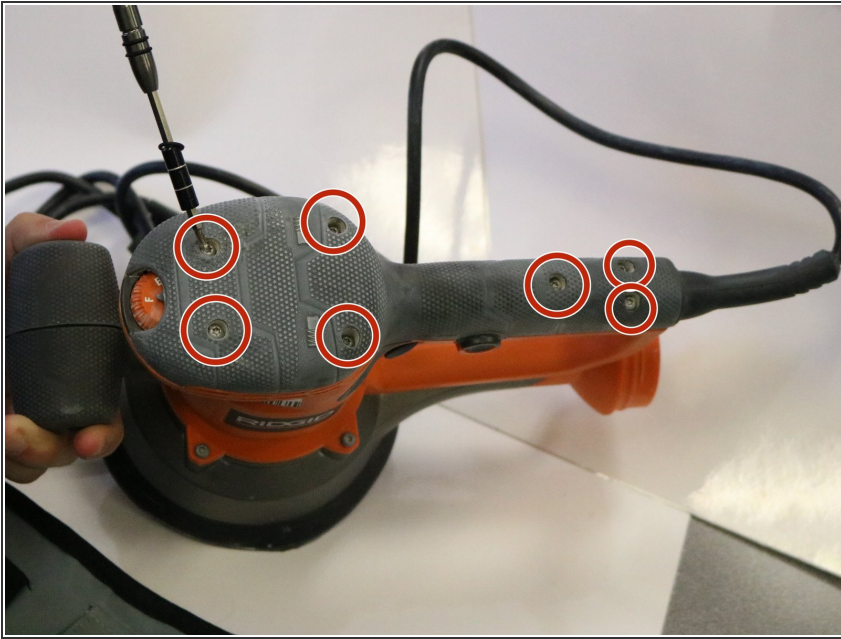
The trigger mechanism can jam or become less responsive overtime. This is due to over use.



TOOLS:

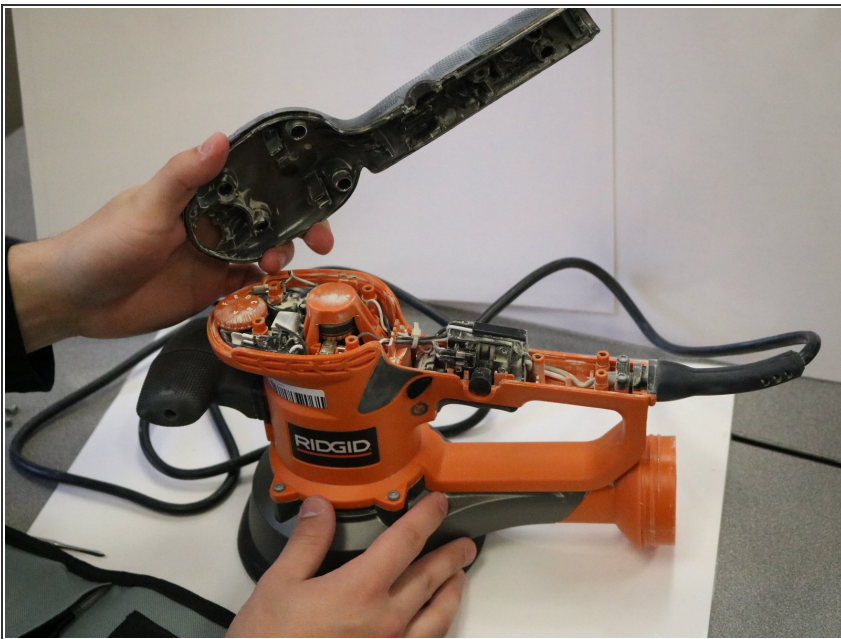
- [Mako Driver Kit - 64 Precision Bits](#) (1)
-

Step 1 — Switch Bracket



- Remove the seven 2.5 mm screws on the top of the sander using the Torx T15 screwdriver.

Step 2



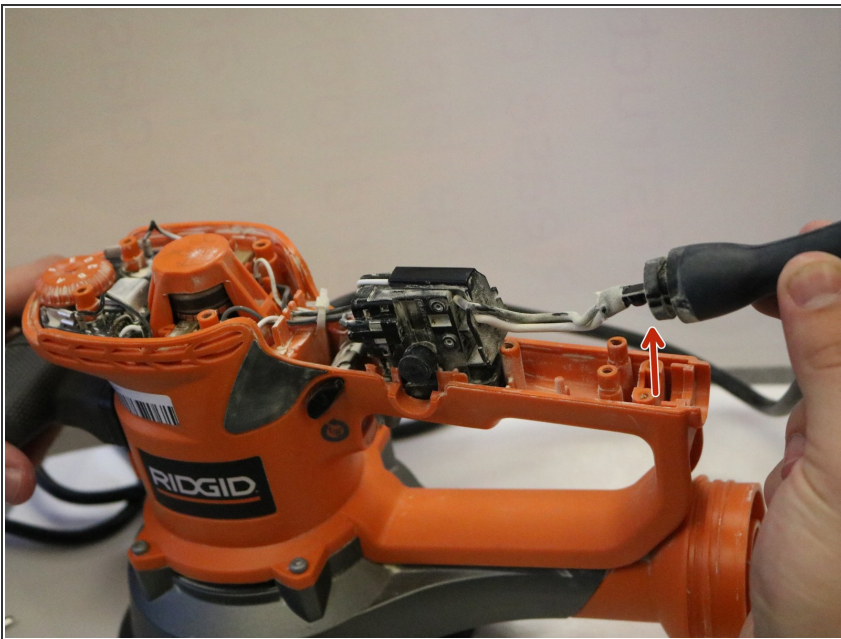
- Remove the top of the sander and put to the side.

Step 3



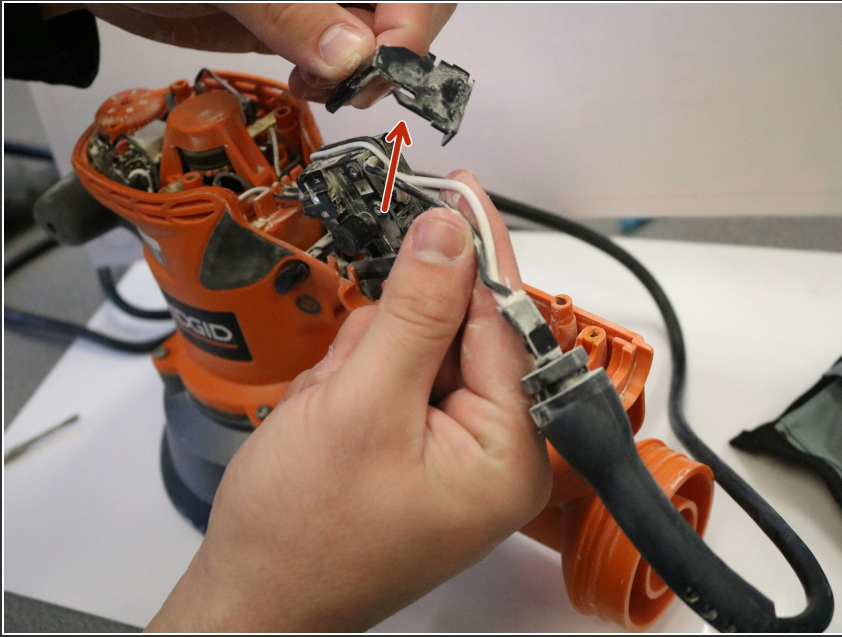
- Use the screwdriver to unscrew the two #6-19 X 5/8 in screws holding down the outlet cord.

Step 4



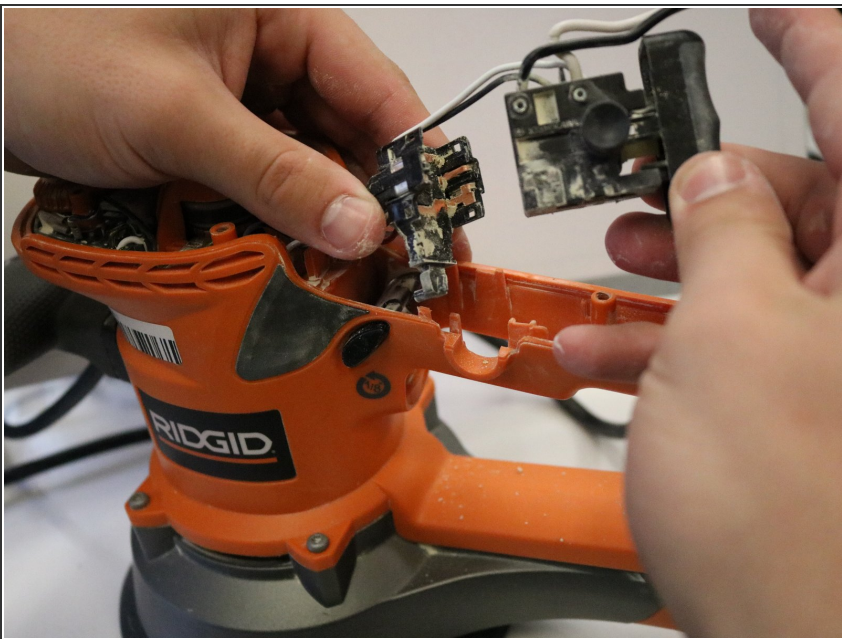
- Remove the cord from the handle.

Step 5



- Remove the outer plastic piece holding down the white and black wires.

Step 6



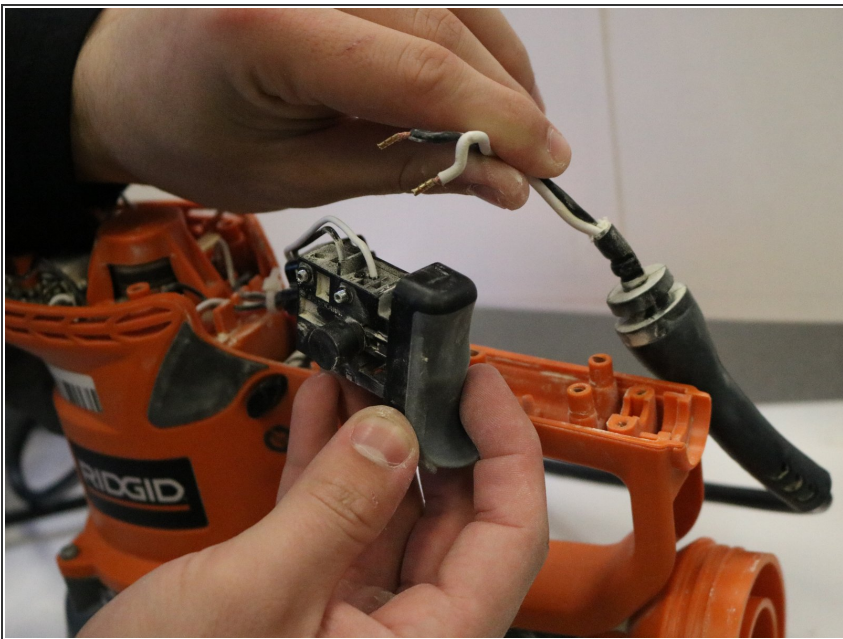
- Unplug the two connecting pieces that hold wires.

Step 7



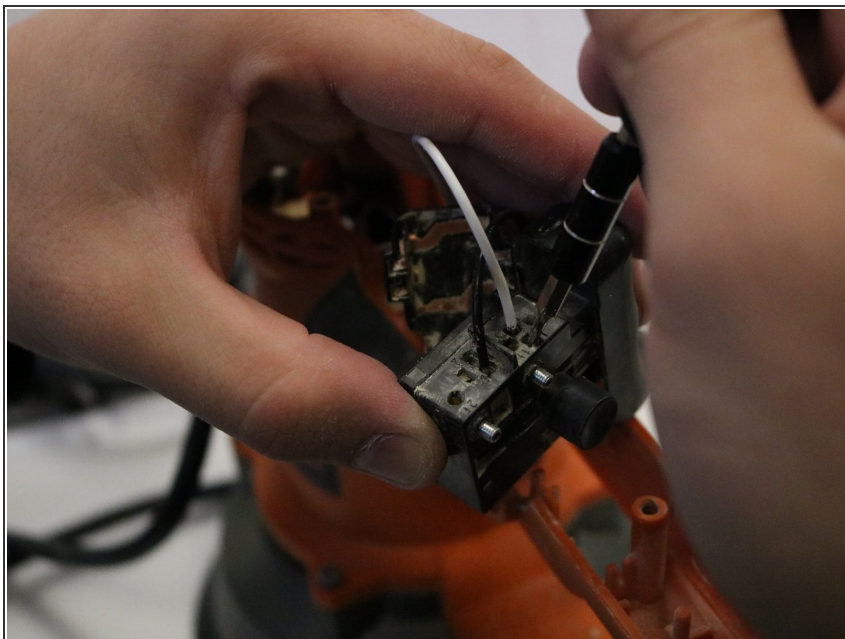
- Using the screwdrivers, unscrew the four #6-19 X 5/8 in screws on rectangular block.

Step 8



- Remove the black and white wires by pulling out.

Step 9



- Put the screwdriver in the holes to release remaining two wires.

Step 10



- Remove the two remaining wires from switch, leaving the switch freed.

To reassemble your device, follow these instructions in reverse order.