



Ridgid R82005 2 Speed Gear Train Replacement

This is a sequence guide to changing the 2 speed gear train for the Ridgid R82005 drill.

Written By: Andrew McPherson



INTRODUCTION

The Ridgid R82005 speed gear switch alters the amount of power intended for specific drill-driver bits and the type of materials manipulated by operators. Forcing this tool to produce torque beyond the limits of a speed gear can cause jams that compromise the drill's versatility.



TOOLS:

- [54 Bit Driver Kit](#) (1)
2mm Hex Screwdriver
- [iFixit Opening Tools](#) (1)



PARTS:

- [Ridgid R82005 2 Speed Gear Train](#) (1)

Step 1 — Housing Assembly



- Eject the battery from the drill.
- Unscrew the seven M3x15.3mm screws, with the 2mm hex screwdriver bit, that secures the Housing Assembly.

Step 2



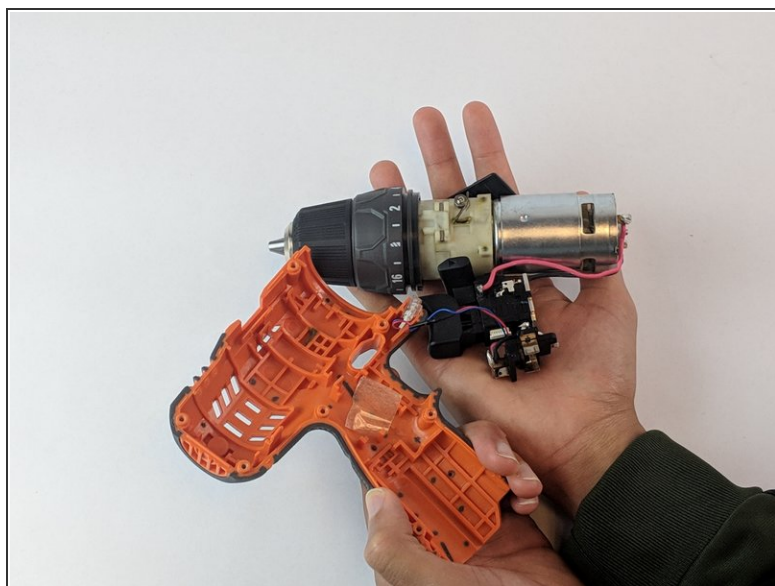
- Push the metallic Housing Connecting clip out with flat side of the plastic opening tool.
- ⓘ Eject battery before attempting this step.

Step 3



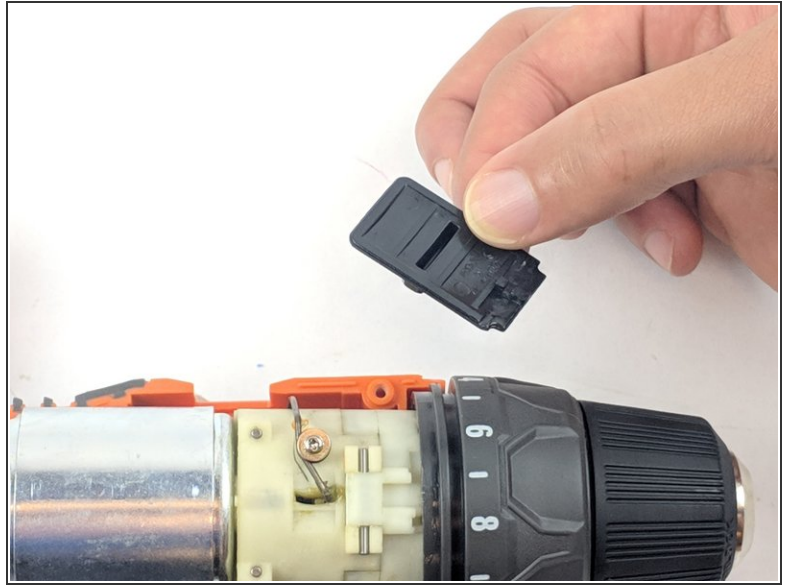
- Remove the top half of the Housing Assembly.

Step 4



- Grasp carefully the top and bottom of drill components.
- ⚠ LED light needs to be manually removed.
- Lift and transfer, as a whole, the drill components from the old housing assembly to the new housing.
- ⚠ Make sure all drill components fit properly in the grooves of new Housing Assembly.

Step 5 — 2 Speed Gear Train



- Remove the 2 speed gear selector by carefully lifting it out of the housing, making sure it is free from the speed switch rail.
- ⓘ The 2 speed gear selector may fall out on its own.
- ⓘ When reassembling, make sure all drill components fit properly in the grooves of the Housing Assembly.

To reassemble your device, follow these instructions in reverse order.